

Norwegian Institute for Urban and Regional Research

# Annual Report 2003









# Contents

Norwegian Institute for Urban and Regional Research	3
International research at NIBR	4
The Board looks back on 2003	6
Annual accounts 2003	8
The regional research group	10
The democracy and governance research group	12
The welfare and living conditions research group	14
The environmental planning research group	16
The environment and development research group	20
Strategic institute programmes	22
International activity	24
Information and dissemination	26
Staff	28
Publications	30
Conferences	34
Projects, project leaders and clients	39

## Norwegian Institute for Urban and Regional Research (NIBR)

is an interdisciplinary social science research centre for urban and regional research. The Institute has a national responsibility for social science environmental research and also works internationally on questions concerning urban and regional research in an environmental and developmental perspective.

NIBR's scientific staff consists of sixty-five researchers whose qualifications span the social sciences and planning disciplines. Research is financed through projects under the auspices of the Research Council of Norway and through commissions that come primarily from central and local government. The Institute is the recipient of research funds from international sources as well.

NIBR is in charge of the Centre for Planning and Environmental Impact Assessment, a centre for research relating to planning and environmental impact assessment in accordance with the Planning and Building Act.

NIBR is a foundation which receives an annual basic allocation from the Research Council of Norway subsequent to allocations by the Ministry of the Environment.

NIBR belongs to The Environmental Research Alliance of Norway, a strategic collaborative venture linking the six leading environmental research institutions in Norway. In addition to NIBR they are NIVA (Norwegian Institute for Water Research); NILU (Norwegian Institute for Air Research); NINA (Norwegian Institute for Nature Research); NIKU (Norwegian Institute for Cultural Heritage Research) and Jordforsk (Centre for Soil and Environmental Research). The Institute of Transport Economics (TØI) and Norwegian Geotechnical Institute (NGI) are associate members.



# International research at NIBR

NIBR is an interdisciplinary social science research centre for urban and regional research. Naturally, most of the institute's research portfolio comprises projects relating to Norwegian issues. But our international activities are growing rapidly, and NIBR's goal is to be an active and well-reputed participant in research and scientific networks in the institute's main areas of research. Each of the five research groups at NIBR is involved in international research cooperation and projects, and one of the groups – The environment and development research group – is focusing exclusively on research in an international setting.

This annual report contains a broad overview of NIBR's research both nationally and internationally. Our ambition is that our international activities shall be well linked to our national research agenda. This will secure a solid competence base for our international research at the same time as our international involvement will provide a wider perspective to our national research activities.

NIBR's international research activity is carried out along several dimensions.

We strive:

- to be an important provider of scientific knowledge and analysis to the institutions responsible for Norwegian international development cooperation and support;
- to facilitate extensive participation in Nordic, European and international scientific networks with the aim of improving the scientific competence and research quality of the institute;
- to establish strategic research alliances with the aim of entering into and carrying out high-quality and multi-national comparative research projects.

## Sustainable development in a social science perspective

NIBR is oriented particularly towards applied, social science research to respond to and address the scientific challenges linked to the rapid changes and transitions that society at large is experiencing. Within this setting, questions and problems related to sustainable development within a wider social science perspective are in focus. This refers to the environmental aspects of sustainable development, but the concept of sustainable development also relates to the social and economic organisation of society, and it has political and distributional implications and consequences.

The challenges linked to sustainable development must be perceived and tackled within an international context and perspective. The Norwegian international development cooperation aims to have a central position in this work, and there is a strong need for increased knowledge of the development trends and conditions in the countries Norway is cooperating with. NIBR is studying the dynamics of the development changes these countries are experiencing and the effects of the Norwegian support to improve living conditions; lessen social differences; and develop democratic and efficient governance.

## Central research topics

NIBR's international research focuses on politics and administration in developing countries – particularly countries in South East Asia and Africa, but also in post-Communist states such as Russia, the Balkans and the Baltic states.

Central research themes are:

- political and administrative reforms promoting good governance, social change and development;
- decentralisation;
- state-society relations;
- development of democratic institutions and public participation;

- the role of civil society and NGOs;
- donor-oriented development questions; management of natural resources and environment;
- provision of public services;
- poverty impacts of reform programmes and policy changes; and
- corruption and informal networks.

Since 1994 NIBR has had a framework agreement with the Norwegian Agency for Development Cooperation (NORAD), and under this agreement NIBR has provided professional advice and research input to NORAD for project evaluation and appraisals as well as for more long term formative evaluation projects on local government reforms (Tanzania and Zambia); institutional capacity building (Southern Africa, Vietnam, Sri Lanka) and public participation in local development (Malawi, Uganda and Tanzania).

An important aspect of the research cooperation is to contribute to the strengthening of institutions and competence building in the countries we collaborate with, and a large number of the projects are carried out in close cooperation with local research institutions and authorities. NIBR has established partnership contracts with research institutions in African and Asian countries as well as in Eastern Europe.

An important aspect of the research cooperation is to contribute to the strengthening of institutions and competence building in the countries we collaborate with, and a large number of the projects are carried out in close cooperation with local research institutions and authorities. NIBR has established partnership contracts with research institutions in African and Asian countries as well as in Eastern Europe.





Director general Jon Naustdalslid

## Network building

During the last decade the internationalisation of knowledge-production and research collaboration has increased tremendously. Extensive international research cooperation – such as the one that is carried out within EU's research programmes – provides good opportunities for participation in comparative research programmes and projects. In order to be included in this cooperation, it is necessary to participate in good and efficient scientific networks and cooperation across country borders. NIBR is currently involved in several EU funded networks and research projects. The strengthened international focus is also a result of changes in the funding agencies' research policy, requiring increased international publication as an essential element to document scientific competence and quality.

The international research activity comprises a series of projects financed by different funding agencies and institutions: The Research Council of Norway; the Ministry of Foreign Affairs; the Norwegian

Agency for Development Cooperation (NORAD); Nordic Council of Ministers; OECD; The World Bank; EU; Council of Europe and FAO.

For the Research Council of Norway NIBR has carried out major projects under the programmes *Public administration in developing countries*; *Administration of fisheries in developing countries*, as well as the *Cooperation programme with South East Europe, Russia and the EU candidate countries*.

A strategic research programme for the institute, granted by the Research Council, accommodates resources for competence building on an individual and group basis in the field of institutional reforms needed for sustainable management of common natural resources, securing biological diversity and the enhancement of local, democratic institutions.



# The Board looks back on 2003

## The Board 2003

### Chair

County Governor  
Tora Aasland  
*County Governor of Rogaland*

### Vice-Chair

Professor Jørgen Amdam  
*Volda University College*

### Member

Director Greta Billing  
*Ministry of Local Government and Regional Development*

### Member

Director  
May-Britt Nordli  
*Norwegian Association of Local and Regional Development*

### Member

Director General  
Halvor S. Karlsen  
*City of Stavanger*

### Member

Researcher Sigrid Skålnes  
*NIBR*

### Member

Researcher  
Trine Monica Myrvold  
*NIBR*

### Deputy member

Researcher Kjetil Sørliie  
*(Sigrid Skålnes) NIBR*

### Deputy member

Researcher  
Jan Erling Klausen  
*(Trine Monica Myrvold) NIBR*

The Research Council of Norway appoints the Board of NIBR on the basis of proposals from the Ministry of the Environment (2 members); Ministry of Local Government and Regional Development (1 member); the Norwegian Association of Local and Regional Authorities (1 member) and the Research Council of Norway (1 member). Two members are elected by NIBR's staff.

2003 was yet another year during which efforts to meet the challenges posed by an ever more competitive research market, the falling value in real terms of NIBR's annual government grant and steps to enhance research quality and relevance set the parameters for the Board's work over the year. NIBR's most important asset in dealing with these challenges is an enthusiastic and highly competent staff.

The Board and NIBR's management have focused on developing NIBR's organization and strategy in light of the challenges facing the Institute. We have initiated a strategy and organization development process aimed at raising awareness of NIBR's core values and competitive advantages, building leadership capacity and turning NIBR into a more pro-active research institute. The process will cumulate in a thorough revision of NIBR's Strategy Document in the first half of 2004.

NIBR's tenancy agreement with the Oslo Innovation Centre expires in November 2004. Deciding NIBR's future location was one of our main tasks last year. In connection with this, NIBR worked to establish a new national, interdisciplinary research centre for social and environmental studies at the nearby Gaustadbekkdalen. Whether the centre will ever see the light of day, and whether NIBR will consider the economic terms of the tenancy agreement acceptable, will be clarified in early 2004.

## Research

NIBR's research groups form the organisational backbone of the social science done at NIBR. In 2003, activity was organized across five research groups:

- The regional research group
- The democracy and governance research group
- The welfare and living conditions research group
- The environmental planning research group
- The environment and development research group

On behalf of the Ministry of the Environment, the Institute manages the national competence centre *The Norwegian Centre for Planning and Environmental Impact Assessments*.

This Annual Report demonstrates the breadth of the work pursued by the research groups, which includes shorter and longer-term commissions, applied research projects and broad involvement in the programmes of the Research Council of Norway. It is gratifying to note the increase in NIBR's international engagements in 2003. The Institute participates in several large EU projects and other international projects. Towards the end of the Annual Report the reader will find a complete list of NIBR's projects and clients in 2003.

In 2003 NIBR delivered research for about NOK 52 million. This is about 5 million less than in 2002. The transfer of NIBR's Division North Norway to Norut accounts for much of the decline.

In 2003 more than NOK 15 m, or about 38 per cent of the Institute's total revenue from commissions, came from projects under the programmes of the Research Council of Norway. Revenue from ministries and directorates amounted to about NOK 14 m. One important aspect of ministerial funding was that the Ministry of Foreign Affairs and the Norwegian Agency for Development Cooperation shared joint first place as NIBR's most significant single commissioners, with a total project portfolio in excess of NOK 5 m. They are followed by the Ministries of the Environment and Local Government and Regional Development. Revenue from local authorities remained stable at slightly more than NOK 4 m in 2003.

NIBR's annual government grant fell in 2003 from more than NOK 11 m to under NOK 10 m. The main cause was the 2003 reorganization of NIBR's Strategic Institute Programmes. In a combined move involving NIBR, the Ministry of the

Environment and the Research Council of Norway, the programme 'Urbanization and Regional Development - Terms, Processes of Change and Consequences' was redefined and turned into a new programme 'Regional and Local Community Effects of and Adaptive Responses to Climate Change'. Since it was impossible to initiate work in this programme before the end of the year, a significant share of the programme's funding needed to be carried over to 2004.

NIBR's government grant is small. In 2003 it represented about 18 per cent of budgeted turnover. Although the actual spending value of the basic grant has long been dwindling, it has nevertheless importantly funded research initiated by NIBR itself, competence and network-building and the strategic development of the Institute's key research areas. These developments in government funding are of much concern to the Board. In our opinion, if NIBR's government grant continues along this path, it will endanger NIBR's ability to act as a free and independent research institute.

NIBR is a member of a number of professional networks, and several projects were carried out in collaboration with other research institutions in 2003. The Institute is a member of the Environmental Research Alliance of Norway (ENVIRA) together with NIVA (Norwegian Institute for Water Research), NILU (Norwegian Institute for Air Research), NINA (Norwegian Institute for Nature Research), NIKU (Norwegian Institute for Cultural Heritage Research) and Jordforsk (Centre for Soil and Environmental Research).

NIBR's annual grant also funds the strategic institute programmes, of which there were five in 2003:

- Regional and local community effects of and adaptive responses to climate change
- Sustainable development - planning and management challenges
- Environment and development - Institutions for sustainable development



- Environmental impact assessments (an ENVIRA programme)
- Management of large drainage basins (an ENVIRA programme)

International work is becoming increasingly important for NIBR. The Institute is involved in several EU projects and work to secure international projects for the Institute resulted in several highly significant commissions, especially in Africa and Asia. In all, revenue from NIBR's international engagements in 2003 provided more than NOK 11 m, or more than 20 per cent of total turnover.

### Organisation and staff

NIBR's staff put in 65.8 person-years in 2003. The shortfall from the year before is mainly due to the transfer of NIBR's Division North Norway to Norut. Scientific staff put in 52.8 person-years and management personnel 13. With regard to the gender ratio, the female proportion of research staff grew to 47.3 per cent last year, and is now 52.4 of all staff. At the end of the year, the management team comprised 3 women and 5 men. NIBR was pleased to welcome four new members of staff in 2003; only one person resigned.

NIBR's staff has considerable and wide-ranging experience and is highly competent. More than 70 per cent have qualifications corresponding to the job titles Researcher II or I. At the turn of the year, eight members of the scientific staff were involved in PhD work and one was awarded his PhD. The Board notes that the continuing decline in the real value of our government grant makes it increasingly difficult for the Institute to support PhD training as well as other forms of competence building. This is a matter of concern for the Board.

### Financial performance

NIBR's total turnover in 2003 was NOK 52.2 m. Overall operating revenue was made up of NOK 39.9 m from commissions and 10.4 m from the annual grant. About NOK 0.7 m came from national assignments; financial income

was NOK 0.8 m, income from sale of publications amounted to NOK 0.6 m. The accounts show a deficit for the year of NOK 1.6 m.

The negative result is an expression of the difficult project market and high costs. The Board is actively meeting these challenges. Among the steps taken are a strategy and organization development process aimed at strengthening NIBR's competitive advantages. The Board will be following this process carefully.

### Prospects and challenges

The Board is convinced that NIBR has an important part to play as a source of essential information for decisionmakers and the public at large both here in Norway and, increasingly, internationally. Society needs independent research centres of NIBR's calibre, able to deliver critical, problem-centred and practical information for government bodies and politicians and to contribute to public debates.

That said, the terms under which non-university research institutions in general, and NIBR in particular, are obliged to work make it extremely difficult to operate with a profit. The non-university institutions in Norway are in many ways at a crossroads. If society wants dynamic, user-focused research institutions in the future, the regulatory and financial climate needs to be changed to allow them to deliver independent, professional research and to operate with a profit. This translates at a minimum into an increase in our annual grant. NIBR's annual grant, or more exactly that portion of it NIBR can spend freely, is now at an all-time low of NOK 6.5 m. That is close to 11 per cent of budgeted turnover. But the authorities should also consider other economically constraining factors for the Institute, such as VAT on research, terms of cooperation with institutes of higher education and other research bodies, and the regulations for public tendering.

Research policy will decide what the future will hold for the non-university institute



In front from left: Tora Aasland, Trine Monica Myrvold, May-Britt Nordli, Greta Billing. Second row: Halvor S. Karlsen, Sigrid Skålnes. Behind: Jørgen Amdam, Jon Naustdalslid.

sector, including NIBR. NIBR's Board looks forward with considerable interest to the Report on Research, due out in 2005, and hopes that its publication will result in a better climate for the non-university institutes and for NIBR than we enjoy today.

In 2003 NIBR initiated an internal strategy and organization development process aimed at clarifying NIBR's role and ensuring that future developments result in professional and financial growth. NIBR's staff has participated in this process with enthusiasm. The level of enthusiasm, expertise and experience represented by NIBR's staff will be our most important asset in dealing with future challenges. The Board would like therefore to take this opportunity to thank everybody at NIBR for their contribution and dedication in 2003!



# Annual accounts 2003

Exerpts – all figures in NOK 1000

The Director of finance/  
Assistant director is in  
charge of accounting and  
finances.

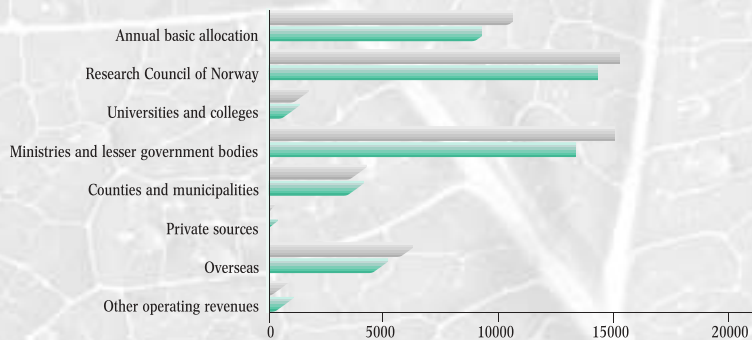
	2003	2002
<b>Operating income</b>		
Income from commissioned projects	39 919	43 598
Annual basic allocation	10 484	11 267
National tasks	720	2 015
Sale of publications	491	596
Other operating income	632	149
<b>Total operating income</b>	<b>52 246</b>	<b>57 625</b>
<b>Operating expenses</b>		
Salaries, wages and social security expenses	35 203	37 481
Expenses directly related to projects	9 585	11 267
Depreciation	1 014	942
Expenses relating to premises	5 335	5 704
Expenses relating to publications	486	829
Other operating expenses	3 025	3 108
<b>Total operating expenses</b>	<b>54 648</b>	<b>59 331</b>
<b>Operating profit</b>	<b>(2 402)</b>	<b>(1 706)</b>
<b>Profits financial items</b>	<b>786</b>	<b>853</b>
<b>Net profit for the year</b>	<b>(1 616)</b>	<b>(853)</b>

## Balance sheet as of 31.12.2003

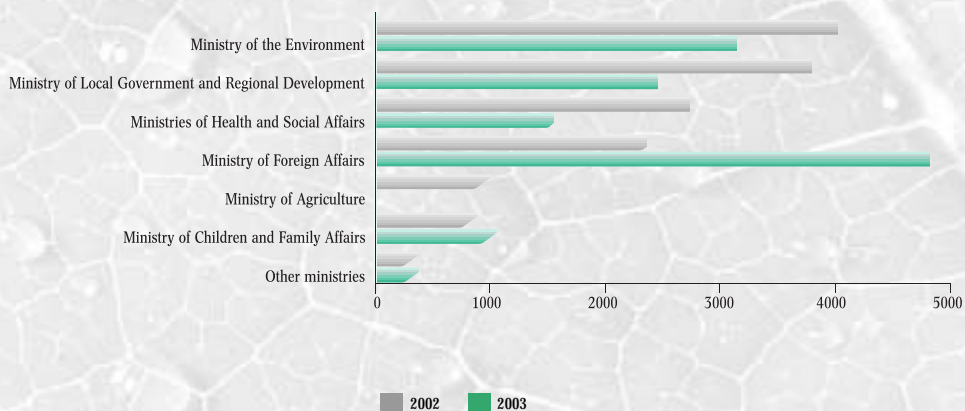
	2003	2002
<b>Assets</b>		
Fixed assets	3 020	2 867
Current assets	36 309	34 794
<b>Total assets</b>	<b>39 329</b>	<b>37 661</b>
<b>Equity and liabilities</b>		
Issued equity	5 000	5 000
Accumulated equity	15 281	16 897
Pension liabilities	700	1 673
Current liabilities	18 348	14 091
<b>Total equity and liabilities</b>	<b>39 329</b>	<b>37 661</b>



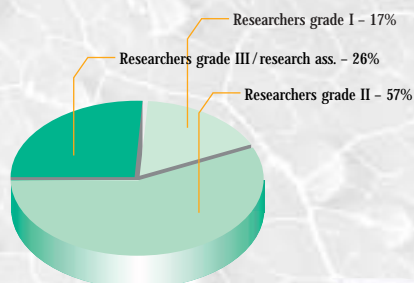
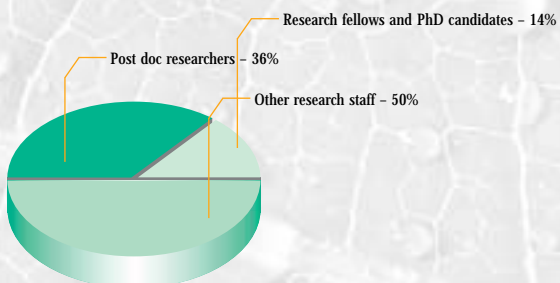
Revenues by source  
2002 and 2003  
(all figures in NOK 1000)



Contracts by ministries  
and related agencies  
2002 and 2003  
(all figures in NOK 1000)



Formal competence of research staff





# We address issues related to regional development at the national and international level

The regional research group addresses issues related to regional development in the wider sense of the term. Studies of development in the private sector, systems of production and innovation, demography and the labour market, together with the regional impact of public policies and planning and governance systems make up core research interests.

Where these core research areas converge arise questions related to the exploitation of natural resources, localization parameters, local and regional identity, regional development in an international perspective and new theories of regional development.

Principal research areas:

- Business development, production and innovation systems
- Impact of migration patterns and education choices on settlement patterns and the labour market system
- Impact of public policy and the public planning and management system
- Utilisation of natural resources and localisation factors
- Factors affecting local and regional identities
- New theories of regional development
- Method development

## The ESPON Network

In June 2002, the EU Commission approved the ESPON 2006 Programme – Research on the Spatial Development of an Enlarging European Union. ESPON is an acronym for European Spatial Planning Observation Network. The programme is organized under INTERREG III, an initiative aimed at encouraging interregional cooperation in the EU, funded by the European Regional Development Fund (ERDF). Together with centres of research in twenty-nine countries, NIBR is also a member of the ESPON Network.

The programme is one in a range of measures designed to realize the European perspective on regional development planning (ESDP) which envisages balanced and sustainable development of EU territory based on the equitable achievement of the following three fundamental goals

- economic and social cohesion;
- conservation of natural resources and cultural heritage; and
- more balanced competitiveness of the European territory.

Derived from these goals are three policy guidelines for regional planning:

- development of a balanced and polycentric urban system and a new urban–rural relationship;
- sustainable development, prudent management and protection of nature and cultural heritage; and

- securing parity of access to infrastructure and knowledge.

The aim of ESPON is to help define what key political goals, guidelines and choices actually mean in territorial terms.

ESPON comprises about twenty studies and feasibility projects. Ten of them are thematic inasmuch as they focus on territorial development, particularly demographic challenges, the situation and roles of the cities, rural–urban relations, access to different forms of infrastructure and knowledge, environmental hazards and the management of nature and cultural heritage. Nine projects are policy-impact studies looking at the territorial impact of sector policies – including infrastructure, agriculture, power, impact of structural and related funds, institutional aspects and instruments – connected, among others, to the introduction of ESDP in the member countries. Two projects explore coordination across subject areas. They build on and evaluate findings of the other projects, with an aim to

- construct and make available systems of data and indicators, territorial typologies, maps, etc.; and
- prepare territorial scenarios.

Each project is managed by a transnational project group, with members from at least three different countries.

Norway became an official member of ESPON in January, 2003. NIBR acts as a

so-called contact point for ESPON in Norway and is responsible for coordinating national undertakings and liaise between ESPON and national centres and users of knowledge. NIBR is also party to two thematic projects on

- the role, specific situation and potentials of urban areas as nodes in a polycentric development, where Nordregio is lead partner, and
- the spatial effects of demographic trends and migration, with the Swedish Institute for Growth Policy Studies (ITPS) in Stockholm as lead partner.

## The urban regions of Østfold in flux

Working together with Telemark Research Institute and the Department of Culture Studies at Oslo University, NIBR has analyzed regional development in the south-eastern county of Østfold. The project was funded under the Research Council of Norway's REGUT programme and comprises a number of separate studies of regional development, business clusters and regional policy. The projects have issued four separate reports, all published in 2003.

In the project we analyze patterns and forces behind regional development in Østfold. The term 'regional development' is taken to mean demographic and commercial developments and certain forms of regionalization processes. The holistic approach we adopted, where endogenous and exogenous perspectives on regional development are integrated, formed a basis for studies of several sub-systems that either constrain or advance regional development. The sub-systems are the commercial system, the demographic and mobility system and the policy making and planning system. The research rests on a multisided conception of 'region' as such and includes studies of economic

Young people are drawn to Oslo like metal to a magnet. Every year 40,000 people are moving to Oslo to try their luck.

Don't think they intend to stay. Before they reach 35, 60 per cent of them will have left the capital again. But that's another story.

'There has been an unprecedented rise in the numbers of people moving to Oslo. Over half of the country's young adults live for some time in one of our four biggest cities. Oslo receives at least half of these,' says migration expert Kjetil Sørli at Norwegian Institute for Urban and Regional Research (NIBR).

in print



regions, political-administrative regions and development regionalization on different levels.

Findings confirm how much Østfold has changed over the past twenty years, from a crisis-struck and stagnating industrial region to a vigorous mixed industrial and service economy. Employment patterns continue to labour under the disparity between supply and demand, and structural unemployment persists.

Generally speaking, the major influences on Østfold come from national and international economies and policies, developments in adjacent regions (Oslo to the north and Sweden's Västra Götaland county to the south), and the widely differing speeds of growth the county's five urban regions and their relative attractiveness. Development differentials are caused precisely by variations in domestic, Oslo-based and transregional developments.

But each of the central municipalities and urban regions has distinct development histories, and each has experience of crises and state funding, though to different degrees. That said, they have all seen in the past decade widespread and dynamic developments. Østfold County has offered considerable help, and indeed become more actively involved in development through the establishment of several new joint regional ventures and pushes. All of which has helped underpin the county's and urban regions' capacity to work with others, to grow and attract business and labour.

The county needs to overcome several challenges in relation to its own development capacity, and at the same time the different urban regions need to tackle challenges related to domestic, Oslo-driven and transregional development. It is essential in this situation that the regions devise their own coherent development policy to boost their appeal in terms of housing, jobs and services. More jobs could be found with a more regionally

focused innovation policy. But this relies in addition on closer development collaboration within the regions and across the county and with the wider areas of Eastern Norway and Western Sweden.

Regional theory gives us grounds to consider the Østfold case in relation to endogenous and exogenous factors in combination in this regional development study. Recent regional theory contributions have tended to give priority to the endogenous aspect, and while this has its merits, it can not in isolation explain regional development as such. They do, however, direct attention towards vital processes of change and opportunities for action.

### The Kjensvatn power station construction

Statkraft SF is preparing ways of 'improving power extraction from already regulated and transferred water systems used today by Rana power station'. Planning is afoot to construct a new power station at Kjensvatn in the municipality of Hemnes, Nordland County.

A new station will mean business for local and regional industry for goods and services and would therefore help sustain jobs and even create new ones – mainly during the construction period. We found in our survey that local businesses could supply most of the investments (two-thirds of total investments). Naturally, the two largest municipalities, Rana and Vefsn, have an advantage, but Hemnes has a good range of many of the types of industry likely to be involved as subcontractors.

Using the PANDA model NIBR assessed the socio-economic impact of the plans to construct the Kjensvatn power plant. We ran two alternative models, and the difference between them is for local subcontracts, not surprisingly, widest during the construction period. The high alternative delivered a job effect of 285 jobs during the investment year, the low alternative 59 jobs. As soon as normal



Research director Ove Langeland

operations resume, however, the two alternatives converged, varying between six and nine jobs annually.

The construction of the plant will therefore not lead to substantial changes in terms of production in the long term. Only the power and water supply sectors will see any permanent effect; the effect in other sectors will become marginal by as soon as 2005. Production figures for the region are dominated by activity at Rana and Vefsn but revenue from the operating period will boost activity growth and accumulated value in Hemnes in the longer term too. The construction of the Kjensvatn power station is only one aspect of wider plans under consideration at Statkraft, the impact of which, also on the natural environment, will naturally be more encompassing.





# A changing public sector requires continual knowledge development in the fields of governance and democratic legitimacy

The democracy and governance research group studies issues concerning democracy, forms of governance and organisational changes in local and central public administration. Research centres on the relationship between central and local government, local democracy, political and administrative structure, management and resource use, service delivery and civic involvement at various administrative levels. Evaluations of organisational changes in the public sector represent another key commitment. Thematically, research focuses on concerns related to i.a. health, social and educational services and environmental issues.

Principal research areas:

- Forms of governance and organisation in local and central public administration
- Municipal parliamentarianism
- The district committee system in the cities
- Central control and local management
- Local politics and citizen involvement
- Immigrants and involvement in organisations
- User involvement

## Justifying municipal mergers

Once again, municipal mergers are topping the political agenda. Calls have come from several quarters in favour of wide-ranging mergers, the rationale being the prospect of a more efficient service delivery. Not everybody agrees, however, and several have expressed their concerns for local democracy they feel could suffer as a result. NIBR was commissioned by the Norwegian Association of Local Authorities to explore how municipal mergers are legitimized. Our study looked at democracy concerns on the one side and desires for effective service delivery on the other.

With regard to democratic ideals, the study looks at the impact of municipal size on the public's sense of belonging and identification with their municipality, political activity and turn-out at the polls. The study shows that size and mergers only exert a limited influence on these aspects of democracy. Inasmuch as the major anti-merger argument has been the likelihood of weakened democratic qualities, the study shows that this would result only to a very limited degree.

The study also found that service delivery is precisely the key issue in local merger debates, particularly the geographical distribution of service delivery within the envisaged enlarged municipality. Discussions by Parliament on municipal mergers tend to focus on ideological arguments related to the possible impact on local democracy. The local debates, on

the other hand, tend to ignore this aspect altogether, with the practical pros and cons attracting the most widespread attention.

It is argued that assessments of the impact of municipal mergers on local services must consider the structure of the services. Economy-of-scale gains will depend on the types of service and their cost structure. While there would be clear economy-of-scale gains in central and sector administrations, in the school and kindergarten sectors other factors than municipal boundaries affect costs. At the same time, some services could achieve quality gains from mergers, despite the limited economy-of-scale potential.

## The use and protection of valuable natural and cultural landscapes

New protected areas are being given the stamp of approval all the time, also in areas with thriving commercial activity. One of the issues concerns how to achieve the best balance of use and protection. The democracy and governance research group and the environmental planning group have conducted several joint studies addressing the ability of land use planning, nature conservation and partner-based agreements to balance use and protection in the management of valuable natural and cultural landscapes. The studies cover both land and coastal areas and look at landscape conservation areas and how ANR (agricultural, natural and recreational) areas are dealt with in municipal plans.

One conclusion is that natural values are more likely to be conserved by landscape protection authorities than by land use planning authorities, particularly by preventing building developments. In the ANR areas, housing and business developments are permitted. In contrast, use and protection tend to clash more severely in the protected areas. Landscape protection permits traditional forms of agriculture and fishing. New, non-traditional businesses, such as farm tourism and fish farming, are considered incompatible. Landscape protection is a static form of protection, and county officials lack the means to assess the impacts of such measures. The result is that landscape protection may hamper local commercial growth even when the businesses involved harbour no threat to protected areas.

Conservation authorities do not seem to give priority to procedures that avert or prevent public opposition. Management strategies are sometimes not in place, and advisory joint committees that bring together conservation authorities and other implicated parties often fail to work optimally. Where they do work, they have proved relatively successful deflecting conflicts, achieving reasonable concessions and promoting wider understanding of conservation. The study concludes that rather than focusing on central or local management, it would be more conducive to put in place procedures and bodies that ensure that local interests are actively involved and heard, and place more weight on local know-how and preferences.

## Mayors want fewer municipalities

in print

Most Norwegian mayors think Norway has too many municipalities. Over 40 per cent of them would like to see their municipality merge with neighbours. Researcher Leif Arne Heløe doubts whether mergers will have a negative effect on democracy. 'On the basis of current knowledge, it would not be very likely. At the same time, it depends on which aspects of democracy you're thinking about,' says Heløe, researcher at Norwegian Institute for Urban and Regional Research (NIBR).

Dagsavisen, June 19th. 2003



agreements is a weakness, and property owners would probably never have agreed to contemplate the partnership without the threat of conservation hovering in the background. This indicates that partner-based management is not a particularly realistic alternative to land use planning.

### The national competence-building plan for mental health

The democracy and governance research group heads three of the six projects at NIBR in which aspects of the national competence-building plan for mental health are being evaluated. The plan is accompanied by central government funding earmarked for local mental health service work. Local authorities have in return to prepare plans and ensure that all action taken is lawful.

The object of the first project is to assess the impact on local authorities of central government controls. The project explores the management by local authorities of their mental health services. The competence-building plan assumes that action to improve services for members of the public suffering from mental health problems will take place within extant service structures, and that new special units shall not be put in place for this segment of the population. The plan also stresses the need to achieve coherent and coordinated services. The study finds as an initial observation that the plan has indeed caused local authorities to take mental health more seriously, but that most have gathered competence within a separate unit or service. Where local authorities have a separate unit, steps have been taken to coordinate service delivery. The cultural sector, the kindergarten and school services tend not to be involved in the mental care work.

The second project explores steps taken to involve the public in the way mental health services are delivered. The project covers all four levels of service delivery and focuses on how the professions deal with clients' right of participation and



Research director Hilde Lorentzen

whether, and to what degree, clients participate on bodies and committees. Preliminary observations indicate that clients are relatively frequently involved in first line local authority services, but considerably less so in second and third line delivery.

The third project explores competence and competence-building in the mental health service. The competence-building plan envisages a formidable rise in jobs at all levels in the mental health service. The project assesses the action of local authorities to recruit workers and build competence. The project also looks at the dilemma facing local authorities between breadth and specialisation for clients of mental health services.





# We aspire to generate new knowledge to promote positive change in our modern, welfare society where structural change is the order of the day

The welfare and living conditions research group aspires to generate new knowledge to promote positive change and expose harmful trends in our modern, welfare society where structural change is the order of the day. We study childhood, family relations, social inequality, social and cultural processes of change, marginalization, integration and distributive aspects of public policy. We also carry out evaluations of public services, plans, pilot schemes and prevention in the health and social sectors and the wider field of cultural policy.

Our investigations revolve frequently around people's sense of identity and belonging. We study young adults, violence and gang formation, in addition to the social implications of children's and young people's use of new technology.

Principal research areas:

- Living conditions and socio-demography
- Welfare schemes – public and voluntary – including care of the elderly and housing
- School development, technology and social implications
- Children, adolescents and the family, including child protection and mental health
- Immigration and refugee-related issues, ethnicity
- Issues related to cultural policy
- Issues related to gangs and violence
- Prevention

## Incidence of partner violence in Norway

This is a joint project involving NIBR and the Norwegian University of Science and Technology at Trondheim. It is funded by the Research Council of Norway and Norwegian Women's Health Association. By the end of 2003, Statistics Norway had collected all the data. 7800 women and men aged 18–59 across the country were asked to respond to a questionnaire sent to them through the ordinary postal service. About 4600 of them responded. The main findings of the survey will be available by mid-2004, and the project completed at the end of the year.

The object of the study is primarily to chart the incidence of partner violence in Norway. National surveys have been conducted in several countries already, but this is the first of its kind in Norway. The study will chart the experiences of men and women of physical force as an aspect of conflict management among couples. The incidence of violence is studied in terms of entire life spans and twelve-month periods. The study will also survey the situations in which physical force between partners occurs, in an effort to determine the causes and context in which it occurs. Response strategies – such as the use of social networks and public services – to episodes of physical force and violence are also examined.

In addition to this main study, data have been collected from several Norwegian crisis centres to establish what type of violence clients of the centres have suffered. The data will allow us to determine the accuracy of our registers of victims of this type of violence. A further objective is to classify key identity traits of victims of violence among the general public and crisis centre clients.

## Alternatives to care homes in Northwest Russia

The number of children in care homes in Russia continues to escalate despite official intentions to find alternative forms of care. What would be required to ensure the development of alternatives to institutional care in Northwestern Russia? This is the overriding question posed by a joint Russian–Norwegian study, of which NIBR is lead partner.

There are few alternatives to care homes for orphans in this region. The Russian authorities – municipal, county and national – are pursuing a child protection policy aimed at cutting the number of children in care homes and increasing the numbers of different types of foster home and small institutions with a more family-like structure. The project also seeks to inform involved Nordic parties on Russian policy and the experiences of Russians, and to inform Russian professionals of alternative ways of caring for children than that provided by traditional care homes.

The circumstances under which children and young people live have high priority in the Nordic countries' collaboration with Northwest Russia. The project is part of the Nordic Council of Ministers' Nordic Action Plan for Children and Young Adults in the Adjacent Areas. The pilot phase was completed in 2002, and from 2003 a full-fledged joint project with Russian, Norwegian and Swedish researchers and

professionals has been under way. It is due to end in 2005. Field work has been conducted at city and regional levels in Archangelsk, during which interviews were made with politicians, professionals and representatives of the authorities. NIBR is working together with the Department of Psychology and Social Work at the University of Pomor, Archangelsk, and Moscow State University. Researchers from the three institutes have prepared jointly the NIBR Report 'Orphans in Russia. Policies for Family-like Alternatives'. In this connection, a seminar was arranged in late 2003 at St Petersburg for experts and professionals from Russia, Norway, Sweden and Denmark.

## Progress, current status and challenges in local authorities' nursing and care service delivery

In an extension of our evaluation of the government's Action Plan for Care of the Elderly, the Norwegian Association of Local Authorities commissioned NIBR to report on Progress, current status and challenges facing local authorities' nursing and care services.

In line with the targets set out in the Action Plan, institutional care – i.e., places at retirement homes – has declined. The building of new nursing homes has been moderate, though by 2005 almost half of all nursing home places will provide single room accommodation, either through upgrading, modernization or built from

in print

## Norwegian couples questioned about violence

7800 women and men are being asked to answer more than 50 detailed questions on violence in relationships. This is the biggest ever survey in Norway on partner violence. Up to now, studies like this have tended to concentrate on violence against women. 'What we'd like to see now is for men to speak about their own experiences as victims of violence,' says Thomas Haaland (NIBR). The researchers hope that people's responses will say something about the causes of violence, whether some groups are more likely to be victims than others, and whether public assistance is adequate. In the longer term, the researchers hope the survey will help prevent violence.



scratch. The Action Plan has instituted the domiciliation of care policy, and is very largely a sheltered housing reform. By 2005 there will be 26,000 such housing units, and six out of every ten person/years in home care will be spent on people living in nursing and sheltered accommodation provided by local authorities.

In a parallel development, capacity in the home care services grew by 30,000 person/years over the past fifteen years. As the twofold increase in the person/year-client ratio indicates, the nature of the work changed too, towards more intensive care. It has been one of the ways of making it possible for everybody to live at home as long as they want, one of the founding reasons for the reform, and has also reinforced residents' autonomy and sense of dignity.

Following this introductory description we discuss particular challenges related to consolidating and extending these positive developments in the nursing and care services in a national perspective:

**Secure local councils' ability to fund services.** The most important challenge is to ensure that local authorities have sufficient funding for the necessary additions to the services. In the period 2002-05, NOK 4-5 billion will need to be found to service the residential units introduced during the period.

**Procure adequately trained personnel.** The care sector will need 30,000 new person/years in the period ending in 2020, on top of current staffing. It is therefore essential to train and retain the roughly 40,000 who lack relevant qualifications through capacity-building measures and professional development schemes. The challenge here will be to persuade young people to opt for a career in a field with something of a lacklustre reputation.

**Fortify and extend the functions of residential care.** The refocusing towards residential care is the most sweeping change to affect the care services in recent times. But politicians and the public are unconvinced that residential care provides complete security at all times of the day and night. There is also little awareness of the cost differentials between residential and nursing home care.

**Develop the future functions of the nursing home.** Most nursing homes today are hybrids, based on both medical and residential aspirations. Steps should be taken to integrate nursing homes more smoothly into the chain of services given the new stress on sheltered housing and residential care.

**Develop coherent and communication-intensive management strategies.**

The sector is wide-ranging, diverse and in constant flux. Difficult tasks and clients with different needs add to this complex picture. It needs to be recognized more widely that good care requires good communication, coordination and organization.

**Devise a coherent and integrated payment system.** The traditional distinction between institutions and residential care services, between health and social services is functionally a thing of the past. The services are generally gathered together under a joint operational management with responsibility for organizing coherent service delivery for each client. The regulations, funding arrangements and payment rules have not kept up with recent developments, however. The challenge here will be to establish an integrated and service-neutral payment system for the care services.



Research director Sidsel Sverdrup





# We study issues connected with framework conditions underlying sustainable development, land use and resource management, and the practice and development of the Norwegian planning system

The environmental planning research group studies issues connected with framework conditions underlying sustainable development, land use and resource management, and the practice and development of the Norwegian planning system. Focal issues are urban development, i.e., land use, transport and housing policy, cultural artefact conservation, outdoor life and environmental impact assessments. The group represents several different disciplines and runs the Centre for Planning and Environmental Impact Assessment.

Principal research areas:

- Planning theory and the planning system
- Environmental impact assessments
- Sustainable development and environmental policy
- Land use, mobility and travel patterns
- Urban structure, building structure and urban development
- Lifestyles, housing models and urban life
- Management of natural landscapes and resources

## Housing planning and housing policy

Housing planning and housing policy are two aspects of an extensive area of study, one which the environmental planning research group intends to give precedence in the immediate future. Some years ago we published a study on local authorities' housing policy. We described it then with the help of terms like fragmentation and reaction. One of the local authorities involved in the study – Asker, a municipality just south of Oslo – recently adopted a pro-active approach to its senior residents, the over-fifties. As a part of this commitment, we are currently conducting a study on housing preferences of the municipality's senior citizens of the future (50+). A similar study, covering the entire country, is also under way, funded by the Norwegian State Housing Bank. The objective here is to facilitate a more forward-looking and pro-active housing policy for the older segment of the population.

We have also been working hard to develop a wider range of residential solutions through communal living: the development of a more flexible type of housing. We call it Housing+ or 'homes with plus factor'. We are working to popularize solutions like this in the Norwegian housing market. Over the past

year we have also published a historical study of 'the good dwelling' in the second half of the twentieth century. It was for this work Jon Guttu was awarded his PhD by the Oslo School of Architecture last autumn. His thesis charts the evolution of the idea of the ideal home among planners in debates held in the professional media between 1945 and 1990. What influenced the planners? What did they look to, and what did they try to resist? How did they argue their views? And what were the wider social implications and challenges?

## Culture as an element or driving force in urban development

Over the past twenty years discussions on culture planning have remained at the top of the urban policy agenda in virtually every country in the world. Interurban competition is sharper than ever, and one way of creating a city image is by concentrating on the broad sweep of culture (architecture, sport, museums, attractive housing, and an appealing, informal urban life style). Statsbygg – The Directorate of Public Construction and Property – has inaugurated culture planning in Bjørvika – where Oslo's new opera will be built – and is preparing a general 'set of guidelines' for culture planning. NIBR has been appointed project

leader in this effort, and we are working closely with Oslo School of Architecture. The towns of Odda and Narvik are included in the project as case-studies. Both places want to use culture in a strategy to regenerate former industrial seaboard areas. The important questions are: What is culture? What is urban culture? How can cultural activities be established in the area before and during regeneration? How can different places use culture as a competitive strategy? And when culture is a major aspect of every city council's development strategy, how can any one city differentiate itself from the fray?

Culture planning will doubtless remain a policy priority for many cities over the next ten–fifteen years, to compensate mounting de-industrialization. The challenges are many, not least when it comes to developing a unique cultural profile. It will take time and require large-scale investments. Expectations are often unrealistic, however, because, among other things, local institutional capacity for strategic culture planning is simply inadequate. We want therefore to give priority to this area of study, where our expertise in cultural heritage planning, urban and planning research, management studies and building and planning regulations will serve as a solid platform.

Research project on city life: Neighbourhoods not particularly well adapted to modern city dwellers.

in print

Urban citizens are not particularly concerned about their neighbourhoods or local areas. Nevertheless, local area planning is still based on old ideas about life in long-gone communities, according to NIBR researcher John Ploger. He is calling for a sharper focus on urbanity. 'People who live in cities, who aren't bothered about their neighbourhood, spend their social life with friends wherever they happen to live. I believe they have been forgotten by urban planners and urban politicians,' he says.

Aftenposten, November 29th. 2003



## Management of natural and cultural heritage

One of the most important reforms aimed at modernizing the public sector since the 1980s concerned the way in which responsibilities are defined and distributed. Major responsibilities in cultural and environmental protection and conservation were decentralized during the 1990s. Over the past few years the environmental planning research group has worked on a range of projects in this area. Among these cases are the delegation of authority to Akershus county council to adjudicate in matters concerning objections and appeals, and the delegation of responsibility to local authorities for the management of protected areas in the Setesdal-Ryfylke uplands.

These studies have not produced clear answers regarding the local management of the environment, nature and cultural heritage. There is evidence that local authority action depends on the institutional constraints and remit of each separate area of responsibility. It means, for instance, that while local authorities may adopt a liberal approach to development interests in land use planning, at the same time they are succeeding in their management of protected areas in compliance with the spirit of the guidelines. Responsibility, it seems, is taken seriously by local authorities. But many municipalities don't want wider powers in environmental and cultural conservation and protection matters unless there's additional funding.

We have explored the requisite elements of an integrated coastal management and planning that takes into account both the needs of nature-based industry and of natural values. This we did by studying how these values are safeguarded by management procedures laid out in the Planning and Building Act and the Nature Conservation Act. We found that conservation was given considerable

attention in relation to commercial interests in the management of landscape conservation areas, but relatively less in local authorities' coastal zone plans.

## Putting a value on recreation

Estimating the value of something is an important element in the management of the natural and cultural environment and in the execution of environmental impact assessments, conservation processes and in the development of land use norms and environmental standards for local authority planning. That said, what we put value on remains a social construction, and is a process with subjective predilections, and whose outcome is influenced by the hierarchy of ideals that govern official evaluation procedures, the methods involved and how official evaluation procedures are practised by the individual authorities. The aim of this project, funded under the Norwegian Research Council's programme Changing Landscapes, is to explore evaluation in practice in terms of variables such as basic values, methodology, place in the management hierarchy and culture. We investigate what in the estimation of experts, authorities and members of the public is considered of recreational value.

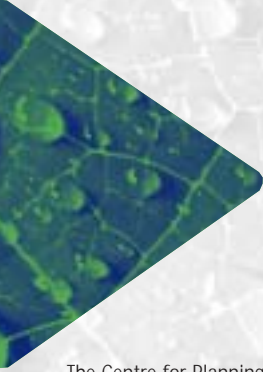
We conduct case-studies and a survey of visitors to, and residents of areas in the vicinity of Vansjø in Østfold county and Grimsdalen in Oppland county. This will enable us to make a survey of the views of central and local authorities and members of the public on the use and management of the areas and related disputes. The goal is to seek out discrepancies between forms of professional expertise and value priorities and the extent to which these differ from the views of the public in general.



Research director Arvid Strand







The Centre for Planning and EIA works on planning and environmental impact assessments in compliance with the Planning and Building Act. It manages a network and information service for central and local authorities, private consultancies and researchers involved in planning and EIA studies.

The Centre organizes courses and seminars and publishes a newsletter. Researchers work with important national and international actors. The Centre also houses a library and a collection of EIA documents. The Centre's electronic network connects central and local government, research bodies, NGOs and private consultancies.

The Centre was established in compliance with the wishes of the Ministry of the Environment, and is organized under the environmental planning group.

The Centre's contact person is dr.ing. Eva Irene Falleth [eva.falleth@nibr.no](mailto:eva.falleth@nibr.no)

Enquiries concerning EIAs can be directed to Cand.polit. Martin A. Hanssen [martin.hanssen@nibr.no](mailto:martin.hanssen@nibr.no)

## Environmental planning in developing countries

Information from studies in one place can often prove beneficial for other parts of the world. Our researchers are becoming increasingly involved in undertakings outside Norway. We have recently completed a commission in Africa to establish a common set of priorities and strategies in the use and conservation of natural resources within and adjacent to Lake Victoria and to promote socio-economic growth locally and more widely in the three countries that share borders with the lake. Studies of the socio-economic and health-related impact of water pollution, as well as its impact on water resource management, have already started in several areas.

In Uganda NIBR is party to a project aimed at determining the social impact of the pollution of specific water sources. The studies we conduct of water management in the area will provide grounds for recommendations to improve management. Over the past five years NIBR has been working alongside the Norwegian Institute for Water Research and the Sri Lanka Department of Fishery on a pilot study to promote the development and implementation of an integrated coastal zone project in the district of Hambantota in Sri Lanka. The objective is to build capacity among local authorities and organizations to assume more of the responsibility for resource management in the coastal areas.

Poverty remains one of the major challenges in developing countries. NIBR is lead partner of several joint projects aimed at developing farming cooperatives in Zambia, Malawi, Tanzania and Uganda. This particular formative process study is funded by the Royal Norwegian Society for Rural Development and the Norwegian Agency for Development Cooperation, and involves national research centres and cooperatives in these countries. In Sri Lanka, NIBR heads a similarly designed pilot project in the production of fruit and vegetables for export. Our locally based partners in this undertaking are the University of Colombo and the Faculty of Horticulture (Wayamba) at the University of Agriculture.

## Planning as a way of promoting physical activity

NIBR is responsible for two projects under the Research Council of Norway's programmes in the area of sport and fitness. In the first project we have studied the impact on children's play and other forms of social activity of the spatial dimensions, design and conditions of outdoor areas and equipment in schools. Schools vary widely with regard to the outdoor facilities they are able to offer their pupils, a circumstance which clearly affects pupils. Lack of sufficient space makes children passive. Certain activities (generally football) tend also to push other forms of activity to the sidelines. Boys are therefore more likely to be active than girls.

The other project explores the balance between government targets in the area of sport and physical activity and the actual planning and practice that take place on the ground. We follow the planning procedures as they lead up to the construction or upgrading of facilities and areas for physical activity, and what happens when people start using them. There is a widening gap between expressed policy intentions to ensure inclusiveness and increasing specialization and commercialization. It also involves new constellations of policy means between new types of players forming new alliances.

Since the early 1970s, government sports policy has promoted 'sports for everybody', i.e., to give as many people as possible an opportunity to participate in sporting and other physical activity. Since the early 1990s, there have been clear planning requirements regarding the building of new local and county facilities. Planning as a policy instrument appears, in other words, to be growing in significance as a method to reach general policy targets ranging from easier accessibility for wider sections of the public to the use of sports grounds and facilities. At the same time, the relation between planning and use of sports grounds seems to become more complicated the greater the involvement of new players and alliances. The use of the facilities becomes less predictable and privatized – partly commercialized – as new purpose-built arenas generally require for-profit funding, and partly individualized as the character of sporting facilities as a public good appears to be losing out in a number of ways.



## The Centre for Planning and Environmental Impact Assessment

In 2003 the Centre had a new Nordic focus in addition to work related to Norwegian planning, fact-finding studies and research. The Centre arranged a conference for Nordic researchers on sustainable development in extension of Nordic environmental ministers' Sustainable Development Action Plan. Working with other Norwegian and Nordic research centres the Centre helped prepare a Nordic symposium on current status and challenges facing local planning authorities. Both arrangements attracted broad attendance from each of the Nordic countries. The Centre also arranged four meetings on planning theory, focusing especially on planning and liberalism, dilemmas in democratic planning, local environmental research and American experiences with integrated land use and transport planning.

The Centre organized six seminars and conferences altogether and published two newsletters. Researchers attached to the Centre wrote three articles and delivered thirty lectures and presentations. The Centre's electronic network which links 560 subscribers is used actively by the Centre and others to circulate information on activities related to planning.

---

## The trouble with high-rise buildings

in print

Tower blocks in Oslo – madness or vital modernisation? Opinion divided.

### *Enough tower blocks*

Several city politicians want to solve Oslo's chronic space shortage by putting up tower blocks. But NIBR researchers Lene Schmidt and Jon Guttu are not convinced. The uncertainties connected with a commitment like this are considerable, they say.

Teknisk Ukeblad, April 12th. 2003





# We study politics and administration in developing countries, particularly countries in South East Asia and Africa, but also in post-Communist states such as Russia and the Baltic countries

The environment and development research group studies politics and governance in developing countries, particularly countries in South East Asia and Africa, but also in post-Communist states such as Russia and the Baltic countries. Central themes are decentralisation, state-society relations, environmental and resource management, central and local public administration, democratisation and political participation, administrative reforms and social change. Many of our studies are comparative and qualitative. We also conduct formative process research on Norwegian development cooperation projects.

Principle research areas:

- State-society relations
- Management of the environment and natural resources
- Public administration / public services and decentralisation
- Democratisation, national and local political participation
- Political/administrative reforms promoting good governance, social change and development

## Informal networks and corruption in Central and Eastern Europe

At the end of 2002 NIBR received funding from the Research Council of Norway for a three-year project to study EU-conditionality, informal networks and corruption in the spheres of public procurement, political party funding, lobbying activities and the judiciary in the Czech Republic, Slovenia, Bulgaria and Romania. The project got under way in March 2003 and is a joint venture with the Centre for Social and Economic Strategies, Charles University, Prague, the Faculty of Police and Security Studies, University of Ljubljana, Vitosha Research, Sofia, and the Romanian Academic Society, Bucharest.

EU anti-corruption conditionality has not had the desired impact, neither in countries waiting for admission to EU (the Czech Republic and Slovenia) nor the EU-applicants (Bulgaria and Romania). There are several reasons for this, the major reasons being a prevailing 'culture of informality' as well as a general lack of political commitment to anti-corruption reform in these countries.

We have chosen to explore the relationship between informal networks and corruption in public bidding, funding of political parties, lobbying and the judiciary since it is here corruption poses a particular threat to democracy and transparency. NIBR hopes to add to the comparatively little

that is known about informal networks in the region because effective anti-corruption action is wholly dependent on such knowledge.

During late 2003 and early 2004, NIBR and its partners conducted 360 interviews with nine categories of elite actors in the Czech Republic, Slovenia, Bulgaria and Romania. Roundtable conferences are planned for each of the countries in the spring of 2004, where issues that have arisen during the interviews will be discussed. Quota-based opinion polls will be conducted with the same types of respondents in the autumn of 2004.

## Study of the World Bank Poverty Programme in Malawi

Since the end of the 1980s, the World Bank has been running an extensive programme to fund small infrastructure projects (wells, classrooms, road improvements) in rural areas in developing countries. The programme has been implemented outside normal government channels, apart from the involvement of local authorities. Local authorities approve the technical standards of the projects prior to implementation. The role of public authorities was restricted as they tend to lack sufficient capacity to implement projects of this nature.

The study found that the Malawi programme does benefit local people in

general. Their incomes grew in connection with road and other infrastructure works such as new classrooms and improved water supplies. Improvements came rapidly as well. But they are drops in the ocean in comparison with the amount of work needed to reduce poverty in the country. The study was unable to measure the long-term impact of the programme in the form of improved teaching facilities and improved access to water.

Aid programmes are increasingly recognizing that they have to reach the poorest of the poor. While the programme's distribution profile was satisfactory nationally and regionally, only certain sections of the local communities reaped the benefits from the improvements, and they were the groups with the most powerful chiefs. These chiefs were expert in lobbying for programme-funded projects for their communities. In twenty of twenty-six studied communities, over half of the projects went to one of the local council's five chiefs. This illustrates the power and continued influence of the system of chiefdoms in places where efforts are being expended to establish state institutions and advanced, bottom-up systems for popular participation.

The study was conducted by an independent team of researchers from the Centre for Social Research, Malawi, the Institute of Development Studies, UK and NIBR.

Anonymous monetary gifts to political parties are corruption, according to researcher.

in print

Corruption is far more widespread in Norway than most people imagine. Parliamentary parties dispute whether monetary gifts should be made public, when and which parts of the parties should be obliged to disclose their benefactors. Åse Grødeland, a researcher at NIBR, believes that anonymous gifts spell corruption.

Dagsavisen, December 11th. 2003



## Reforms and social processes of change in Vietnam: What happened in the fishing communities?

Industrial and economic reforms in Vietnam started as far back as the early 1980s. 1986 marked the official inauguration of Doi Moi – the central reform push. Vietnam has seen wide-ranging economic and social changes since then, but reform of the public sector centrally and locally has lagged behind.

Since 1997 NIBR has been working on several projects – mainly concerning processes of change in fisheries and fishing communities – alongside Vietnamese research institutes. These projects have mainly focused on change in fisheries and fishing communities.

Reforms in Vietnam lead to a dynamic development in the coastal areas with a rapid growth in production and export within the fisheries and marine aquaculture. From being organized as multifunctional cooperatives, coastal fisheries were transformed into small, household fishing holdings. The trade chain is well organized, it provides loan capital and market information for the fishermen. Coastal fisheries in Vietnam could be said to be driven by market forces. New market openings result in a higher rate of investment, often with credit from the trade chain, and rapid rises in fishery activity.

In addition to developing the coastal fleet, the Department of Fisheries has been funding an ocean-going fishing fleet development programme. Thus far, however, the programme has run into numerous difficulties, with the ocean-going fleet competing with the coastal fleet for the same fish resources.

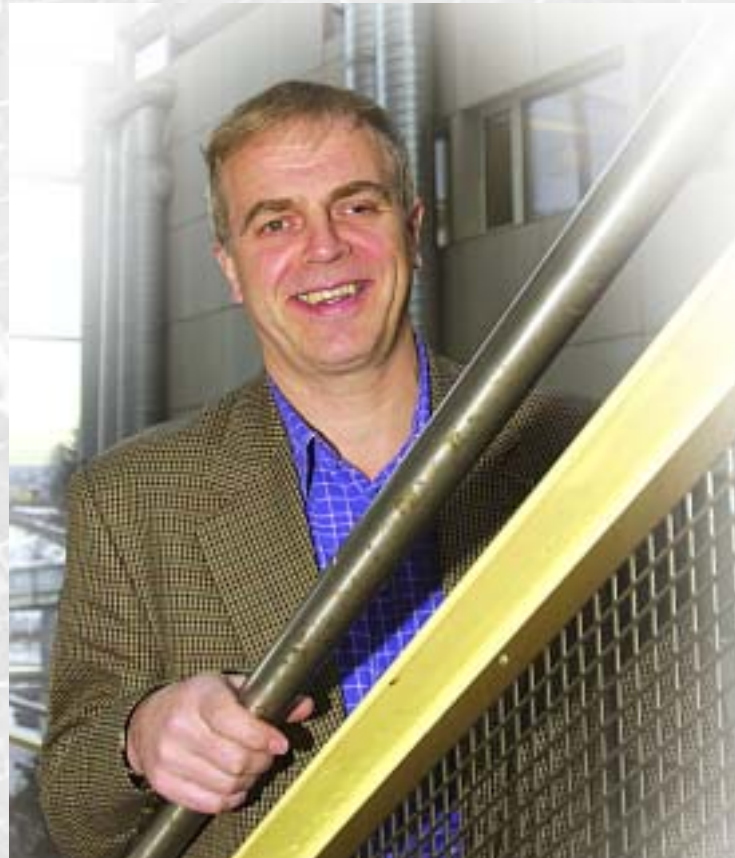
The result is budding overfishing. Higher prices used to compensate the fishermen's smaller catches, but fishing communities along the coast are finding it increasingly difficult to get by. The present resource management structure is unable to meet these new demands. In November 2003, the Vietnamese Parliament approved a new fisheries act. Norway provided technical assistance during the bill's preparation, and will continue to do so in the drawing up of regulations and provisions. The civil service will need more capacity if it is to implement the act and monitor compliance.

These changes have not only affected the fisheries. Other coastal businesses are becoming increasingly lucrative. The tourist trade is growing rapidly and production capacity in the marine aquaculture business is expanding too. The popular committees and organizations retain their official status, but in terms of practical politics they need to work with the new players on the economic stage.

NIBR entered into a partnership in 2003 with the Centre for Applied Geography, Hanoi University of Education, with a view to analyzing three elements of these processes of change:

1. Migration, demographic growth and regional development in coastal areas;
2. Rights and access to coastal resources;
3. Role of local institutions and popular committees in social and business development and poverty alleviation.

This project builds on two earlier NIBR projects, one on the impact of economic reforms on Vietnamese fishing communities (1997–2004), the second on knowledge in fisheries management (KNOWFISH), an EU-INCO project (2002–2004).



Research director Arne Tesli





# Strategic institute programmes

NIBR's Strategic institute programmes, whose purpose is set out in NIBR's Strategic Plan, play a central role in NIBR's human resource development efforts and in promoting NIBR's international orientation. The programmes cover theoretical and empirical research and the interpretation and publication of findings. By supporting PhD projects – generally in connection with quite comprehensive projects – the strategic programmes also encourage competence-building at the individual level. Reinforcing relations with other institutes and network-building nationally and internationally are also priority areas. The annual basic allocation funds the programmes.

## Sustainable development – planning and management challenges

Since the concept of sustainable development was launched by the World Commission for Environment and Development, scientists, politicians and the public have delved its substance and arguments, its implications for policy design and practical politics, and its redistributive impact on present and future generations.

This programme addresses this international debate from the point of view of substance, scientific and methodological approaches and working practices. We aim to generate knowledge about the ecological, political, social and redistributive implications of the concept of sustainable development through the spatial/territorial perspective embraced in the 'urban and regional research' paradigm. Themes pursued within the programme include ecological/ environmental, social/welfare and redistributive/ generational aspects of sustainable development in light of political objectives, practical politics and natural imperatives.

The programme includes studies of, i.a.:

- Changing global and international frame conditions, driving forces and players and their effects on and consequences for policy in Norway aimed at promoting sustainable development at macro and micro levels.
- Factors and mechanisms facilitating sustainable management of natural resources and the environment, land use and preservation of biological diversity.
- Management capacity and mechanisms for sustainable development.
- Social and redistributive implications of mounting sustainability in development.
- Sustainable policies and practices and quality, use and implications of knowledge.

Arvid Strand chairs the programme.

## Environment and development – institutions promoting sustainable development

The aim of this programme has been to support NIBR's competence-building strategy in the areas of environment and development, especially as relates to the study of local and national natural resource management systems and regimes and the interplay between them. The programme studies connections between environmental and developmental concerns, public administration and management regimes.

Further issues relate to developing countries, especially Norway's main development cooperation partners and countries in Eastern Europe, where the emphasis is on cross-country comparison. The programme funds PhD research, and helps expand and maintain our connections with the Barents region, the Baltic States and Third World countries such as Sri Lanka, Tanzania, Vietnam, Zambia and Malawi.

Central themes are, i.a.:

- Institution-building and evaluation of civil service reforms.
- Management of common lands, natural resources and the environment.
- The development of terminology and methodology for development cooperation research.
- Living conditions in the North.

Arne Tesli chairs the programme.

## Regional and local community effects of and adaptive responses to climate change

The UN Climate Panel has published wide-ranging and powerful evidence to support the claim that human activity is the most important cause of global warming over the past fifty years. There is no doubt at all that the lengthy half-life of climate gasses and the slow reaction of the climatic system to mounting concentrations will spawn extremely long-term consequences. Even if emissions were stabilized at current levels, policies and measures that help society to *adapt* to the consequences of climate change require reliable knowledge now.

Climate research in Norway and globally has focused on the physics of climate change. Despite the many unsolved issues still in need of answers in this type of research, it is increasingly clear that the social sciences are lagging behind. Climate change will present society and people with new and largely unknown challenges. We need to understand how climate change will affect society and, not least, what action society can take in response to these processes of change.



This particular strategic institute programme aims primarily at developing internationally competitive expertise on research into the regional and local social impact of climate change and adaptive action taken regionally and locally in response to that impact. Climate change will present many different challenges and require different forms of response from different types of regions and local communities. Existing and newly established institutions will need to respond to the new challenges of climate change. Success depends on good analytical models and instruments for effect studies and studies of society's response to climate change.

In compliance with the conditions attached to the funding of the strategic institute programme, NIBR will conduct a coherent, interdisciplinary pilot study in one region in preparation for subsequent area studies in several Norwegian regions. The area studies will address issues and themes including:

1. Development of indicators to quantify climate effects to the extent possible;
2. Development of regional economic models which can link indicators of socio-economic development, climatic conditions and sustainable development;
3. Studies of the response of economic actors and individuals to climate change, including issues concerning the distributive aspects of climate concerns;
4. Studies of institutions in relation to climate change and what it necessitates in the way of political and administrative governance.

Other studies will include the regional dimension of Norwegian climate policy enactment and adherence to international climate treaties.

Terje Kleven chairs the programme.

## Joint institute programmes under ENVIRA

The Environmental Research Alliance of Norway brings together the resources of NIBR, NIVA (Norwegian Institute for Water Research), NILU (Norwegian Institute for Air Research), NINA (Norwegian Institute for Nature Research), NIKU (Norwegian Institute for Cultural Heritage Research) and Jordforsk (Centre for Soil and Environmental Research). NIBR is involved in two programmes under ENVIRA.

The first focuses on **Environmental impact assessments** and the need for more knowledge in this area in Norway. As it is a multi- and cross-disciplinary project, it provides an opportunity to develop and test methods of relevance to cultural heritage studies and the natural and social sciences. NIBR is the coordinating partner.

Key objectives of the programme are:

- To generate knowledge and build competence in EIAs within ENVIRA.
- To pave the way for qualitatively improved EIAs, among other things by upgrading theoretical knowledge and improving a methodology that facilitates the practical implementation of the precautionary principle.
- To strengthen the status of the EIA institution within environmental management and planning circles.

Arne Tesli is coordinator for the programme.

The programme **Watershed oriented management of large rivers** is a collaborative undertaking with NINA, NIVA and Jordforsk. NINA acts as coordinator. The aim of the programme is to improve and develop the knowledge base for a watershed based management of water courses in Norway. The knowledge acquired will help us design an ecosystem-based management regime based on the principles of sustainable development.

The programme's main tasks are:

- To improve our understanding of biological processes in large, complex drainage areas and the impact of various types exploitation.
- To generate knowledge of the environmental criteria users must comply with and conflicts arising from opposing interests in the large water systems.
- To recommend steps that promote sustainable development and an ecosystem-based management of large, complex water systems.

NIBR's representative on the programme's steering committee is Sissel Hovik.





# NIBR's international activity

NIBR works with a wide range of international institutes and bodies, and cross-border activity has grown in recent years, not least in areas concerning environmental, managerial, developmental and regional issues. The Institute is party to a number of projects and several specialists networks, among them the EU's European Co-operation in the Field of Scientific and Technical Research (COST), European Urban Research Association (EURA), OECD and the Joint Nordic Committee on Housing and Urban Research (NSBB). NIBR also collaborates with leading US and European researchers attached to Eurogang, a thematic network for comparative and multi-method research on violent youth groups.

NIBR is a member of the ESPON network together with research centres in twenty-nine different countries. The acronym stands for European Spatial Planning Observation Network. The programme is conducted under INTERREG III and aims at encouraging international collaboration within the EU. It is funded by the European Regional Development Fund (ERDF).

NIBR is represented on a range of influential bodies, including Regional Science Association (RSA), UNESCO and European Urban Research Association (EURA).

Through its involvement in development studies, NIBR has established good working relations with a number of universities and research institutions in the Nordic countries, in Asia, Africa and Eastern and Central Europe.



## AFRICA

Projects involving several countries

- Social capital, local government and poverty reduction

- 1** Ethiopia
  - Country environmental analysis – institutional analysis
  - Impact and implications of the work of Norwegian voluntary organizations

- 2** Kenya
  - Lake Victoria vision and strategy framework

- 3** Malawi
  - Malawi poverty alleviation sustainability review
  - Business experience exchange programme

- 4** Mali
  - Decentralisation/education in Mali

- 5** Mozambique
  - Changes in local governance
  - Citizens and local elections

- 6** Tanzania
  - Formative process research, Tanzania
  - Lake Victoria vision and strategy framework
  - Business experience exchange programme

- 7** Uganda
  - Lake Victoria vision and strategy framework

- 8** Zambia
  - Business experience exchange programme

## ASIA

- 9** India
  - India watershed development project

- 10** Indonesia
  - Environmental collaboration with Indonesia

- 11** China
  - Sino-Norway social policy forum

- 12** Pakistan
  - Pakistani democracy

- 13** Sri Lanka
  - Formative process research, MONDEP
  - Alcohol and poverty, Sri Lanka
  - Coastal zone plan, Hambantota
  - Impact and implications of the work of Norwegian voluntary organizations

- 14** Vietnam
  - Fisheries' adaptation and marine resource management under impact of economic reform
  - Knowledge base of fisheries management
  - Building capacity for development research at the Research Centre for Applied Geography

## EUROPE

Projects involving several countries

- OECD territorial database
- The spatial effects of demographic trends and migration





16

11

12

9

14

13

1

2

6

5

- The role, specific situation and potentials of urban areas as nodes in a polycentric development
- Panel of experts, Council of Europe
- European harmonised procedures for quantification of nutrient losses from diffuse sources
- Mid term evaluation of Interreg IIB North Sea Region programme
- Interreg IIIA Nordic countries
- ESPON – contact point
- Participation, leadership and urban sustainability

15

- Central and Southeast Europe
- NGO bargaining power at the municipal level in Southeast Europe
- Conditionality, corruption and informal networks
- Local authority collaboration Norway-Bosnia

16

- Russia
- Alternatives to orphanages in Northwest Russia

17

- The Nordic countries
- Nordic comparative city district project
- Territorial patterns and implications of socio-economic change in the Nordic peripheries
- Nordic innovation
- Kvarken – Midtskandia
- Nordic experiences of strategic environmental assessment
- Nordic urban policies





# Information and dissemination

The resource department coordinates all non-research activities at NIBR. They include

- Office services
- Switchboard/reception
- Personnel management
- IT services
- Library
- Information

Contact information:

Library:  
inger.w.andresen@nibr.no

To order/subscribe to NIBR publications:  
sisel.hjellvik@nibr.no  
berit.willumsen@nibr.no

NIBR has a responsibility to provide information for the public, and our researchers participate actively in debates of relevance to the Institute's activities. The Institute attempts to maintain a balance between publications aimed at the general public, clients, the media and users, and that intended for the national and international scientific communities.

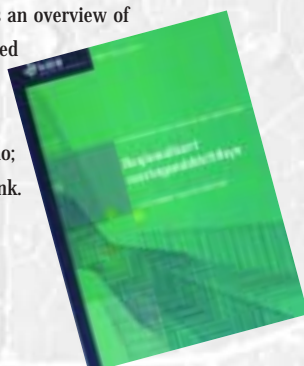
NIBR's resource department is in charge of information and the Institute library.

## Reports, articles and other literature

The findings of most research projects are generally reported in one of NIBR's own publications. In 2003, NIBR published seventeen reports and twenty-six working papers. The working papers are published on the web only, and can be accessed at our website. All reports include English and Norwegian summaries. Informative leaflets are distributed in connection with the publications.

A considerable amount of literature from NIBR was published by others. Scientific peer-review journals printed eleven articles and other journals thirty-two articles by NIBR's scientific staff. In addition NIBR researchers either wrote or edited nineteen books and other project reports and provided nineteen contributions to anthologies, compendia and article collections.

Every year NIBR prepares an overview of published literature, ordered by subject matter. These lists can be accessed at our website at [www.nibr.no](http://www.nibr.no); follow the 'publications' link. It may also be ordered in print from NIBR.



## Regional trends

NIBR's Regional trends is a periodical focusing on a wide range of issues of regional research interest. The contributions derive from commissioned and self-financed projects. There were two editions of Regional trends in 2003. The Ministry of Local Government and Regional Development supports the issues financially. Annual subscriptions (two numbers) cost NOK 150 and can be ordered at NIBR. Separate editions are also available.



## NIBR aktuelt

NIBR aktuelt (NIBR news) provides up-to-the-minute information on current projects at the Institute. It was published twice in 2003. The first dealt with welfare studies and the second with international research. NIBR aktuelt is free and can be ordered from the Institute.





## Conferences

Conferences, national and international, are hubs of information exchange. NIBR's researchers attended seventy-five conferences and seminars at home, and delivered sixty-seven papers at conferences abroad.

NIBR also arranges conferences and seminars, the three most important in 2003 being the

1. Nordic Conference on Sustainable Urban Development, Oslo, 15-16 May 2003;
2. Network on Local Politics in Developing Countries. 2nd Annual Conference: Public Policies Meet Local Politics, Oslo, 21-22 October, 2003;
3. Politics and Poverty, Norwegian Association for Development Research (NFU) Annual Conference 2003, Oslo, 23-24 October, 2003.

## Public arrangements

**Academic Forum** is the name given by NIBR to its open seminars at which we address contemporary issues of relevance to research at NIBR. Seven such seminars were held in 2003 on the following issues:

1. Differentiated employers' social security contribution. Who should the grants go to?
2. Changing role for government. What sort of state are we heading for? What sort of state do we want?
3. Building and Planning Act Review Commission: a new act – and new practices?
4. Is the government a better proprietor than the county councils? The hospital reform in focus.
5. Municipal mergers: freely or by force? Reason or emotions?
6. On the lookout for the good life. Are the prevention programmes pointing us in the right direction?
7. Oslo – City of Knowledge. Research cluster with potential?

## NIBR gathering 2003

On November 12, 2003, clients, partners, colleagues and friends gathered at NIBR for the first of what we hope will become an annual event at the Institute. The event represents a social and professional opportunity to present important research in a congenial atmosphere. The topic for this year's gathering was Networks and Social Change, and was illuminated with four current Norwegian and international studies.

## NIBR's library

NIBR's library houses 24,000 titles within the disciplines represented at the Institute. The library subscribes to about 180 journals and 12 newspapers.

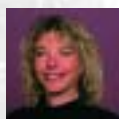
An important part of the library's information and reference service involves searches or search assistance in bibliographic and other databases on the Internet. The library is party to syndicate agreements on access to ISI's citation databases Science Citation Index Expanded, Social Science Citation Index and finally the whole-text base Atekst for Norwegian newspapers.

Besides lending literature, the library copies articles in response to in-house and external orders. Many of this latter group are college and university students for whom our collections at NIBR provide valuable source material.

Collaboration with other libraries affiliated to the Environmental Research Alliance of Norway runs smoothly. ENVIRA is a consortium devised to make economies-of-scale savings regarding subscriptions on printed and electronic journals etc.





Management/  
economyNaustdalslid, Jon  
Director general/  
mag. art.Viste, Jon Olav  
Director of finance/  
Assistant director  
general/cand. oecon.Gangnes, Kathrine  
AccountantOpaker, Mariann  
Accountant

## Resource department

Fiskvik, Eli  
Resource directorAndresen,  
Inger-Helene Wang  
Head of library/  
cand. mag.Balberg, Inger  
SecretaryBolstad, Lynne  
SecretaryEmami-Bistgani,  
Hossain  
IT systems  
administratorHjøllvik, Sissel  
ReceptionistLangeland, Joakim  
IT systems assistantWebenstad,  
Gro Karin  
SecretaryWillumsen, Berit  
Information officerRegional research  
groupLangeland, Ove  
Research director/  
dr. philos.Bjørnsen,  
Hild-Marte  
cand. oecon.Edvardsen,  
Hege Marie  
cand. polit.Foss, Olaf  
cand. sociol.Gundersen, Frants  
siv. ing.Johnstad, Tom  
cand. polit.Juvkam, Dag  
cand. polit.Kann, Frode  
cand. oecon.Moen, Bjørn  
cand. mag.Mønnesland, Jan  
cand. oecon.  
(on leave from 1.8.)Onsager, Knut  
dr. polit.Orderud, Geir Inge  
cand. philol.Skålnes, Sigrid  
cand. polit.Sæther, Bjørnar  
dr. polit.Sørli, Kjetil  
cand. act.Tøresen, Jøran  
cand. mag.Vanberg, Vidar  
cand. real.



Democracy and governance research group



Lorentzen, Hilde  
Research  
director/dr. polit.



Hansen, Tore  
professor



Hanssen, Gro  
Sandkjær  
cand. polit.



Helgesen, Marit  
dr. polit.



Heløe, Leif A.  
dr. odont.



Hovik, Sissel  
dr. polit.



Klausen,  
Jan Erling  
cand. polit.



Myrvold,  
Trine Monica  
cand. polit.



Predelli,  
Line Nyhagen  
Ph. D.



Stigen, Inger Marie  
cand. polit.



Vabo, Signy  
dr. polit.



Winsvold, Marte  
cand. polit.

Welfare and living conditions research group



Sverdrup, Sidsel  
Research director/  
dr. polit.



Baklien, Bergljot  
cand. sociol.



Bratt, Christopher  
dr. polit.



Brevik, Ivar  
cand. mag.



Brox, Ottar  
prof. emeritus



Carlsson, Yngve  
mag. art.



Clausen,  
Sten-Erik  
cand. psychol.



Feiring, Marte  
mag. art.



Gotaas, Nora  
cand. polit.



Haaland, Thomas  
cand. mag.



Kristofersen,  
Lars B.  
cand. sociol.



Lien, Inger-Lise  
dr. polit.



Vestby,  
Guri Mette  
cand. sociol.

Environmental planning research group



Strand, Arvid  
Research director/  
dr. ing.



Arnesen,  
Odd Eirik  
cand. polit.



Falleth, Eva Irene  
dr. ing.



Guttu, Jon  
dr. ing.



Hanssen,  
Martin A.  
cand. polit.



Kleven, Terje  
dr. ing.



Nenseth, Vibeke  
mag. art.



Ploger, John  
dr. art.



Røe, Per Gunnar  
dr. polit.



Saglie, Inger-Lise  
(on leave in 2003)  
dr. ing.



Schmidt, Lene  
civ. architect



Skogheim,  
Ragnhild  
mag. art.



Stokke,  
Knut Bjørn  
cand. polit.



Tennøy, Aud  
siv. ing.

Environmental and development research group



Tesli, Arne  
Research director/  
dr. polit.



Aasen, Berit  
cand. sociol.



Braathen, Einar  
cand. polit.



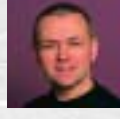
Dalfelt, Arne  
cand. agric.



Grødeland,  
Åse Berit  
Ph. D.



Haug, Marit  
Ph. D.



Holm-Hansen, Jørn  
cand. polit.



Schou, Arild  
dr. polit.



Vedeld, Trond  
dr. scient.





## Titles published by NIBR

### NIBR Reports

**Arnesen, Odd Eirik and Knut Bjørn Stokke**  
National conservation and municipal planning  
in the coastal zone  
NIBR Report 2003:12

**Brevik, Ivar**  
Local authorities' delivery of nursing and care  
services. Development, current status and  
challenges  
NIBR Report 2003:17

**Bråtå, Hans Olav and Odd Eirik Arnesen**  
Agriculture, spatial planning and municipal  
agricultural plans  
NIBR Report 2003:6

**Feiring, Marte**  
End User Office at the city district level  
NIBR Report 2003:9  
The report is available from [www.nibr.no](http://www.nibr.no)

**Hansen, Tore (ed.)**  
Between political principles and local  
pragmatism  
NIBR Report 2003:10

**Helgesen, Marit**  
Children's need or parents interests  
Parents motives for letting their children  
attend private schools  
NIBR Report 2003:8

**Heløe, Leif Arne, Sissel Hovik and Inger  
Marie Stigen**  
Regionalised food control – experiences and  
challenges  
NIBR Report 2003:2

**Holm-Hansen, Jørn, Lars B. Kristofersen and  
Trine M. Myrvold (eds.)**  
Orphans in Russia  
Policies for family-like alternatives  
NIBR Report 2003:1

**Jansen, Silje Katinka**  
Financing innovation with venture capital  
How contacts between firms and  
entrepreneurs in the Oslo region are  
established  
NIBR Report 2003:16

**Onsager, Knut, Torjus Bolkesjø, Arne Bugge  
Amundsen and Olaf Foss**  
The restructuring of small urban regions in  
Østfold  
Autonomous, Oslo-dominated or  
transnational?  
NIBR Report 2003:7

**Onsager, Knut and Bjørnar Sæther**  
Knowledge economy and cluster development  
On the emergence of knowledge-intensive  
industrial cluster in a small industrial  
community  
NIBR Report 2003:4

**Onsager, Knut, Torjus Bolkesjø and  
Bjørn Moen**  
Regional policy and development partnerships  
in the County of Østfold  
NIBR Report 2003:3

**Røiseland, Asbjørn and Inger Marie Stigen**  
County Council parliamentarism in Nordland  
County  
NIBR Report 2003:15

**Sverdrup, Sidsel and Christopher Bratt**  
Knowledge, openness, mental health and  
psychiatric disorders  
NIBR-Report 2003:5

**Tennøy, Aud**  
The indoors climate – time for a new push?  
NIBR Report 2003:14

**Tennøy, Aud**  
Predictions and uncertainty in reports on  
traffic-related issues in EIA  
NIBR Report 2003:13

**Toresen, Jøran**  
Action plan for elderly care  
Impacts on capacity, coverage and person-  
years  
NIBR Report 2003:11

**Working Papers**  
Working Papers are available online at  
[www.nibr.no](http://www.nibr.no).

**Bjørnsen, Hild-Marte, Bjørn Moen and  
Geir Inge Orderud**  
Development of the Kjensvatn Power Station,  
Municipality of Hemnes  
Implications for the local community  
NIBR Working Paper 2003:115

**Braathen, Einar**  
Social Funds – support or obstacle to local  
government reform?  
Working Paper 2003:118

**Bratt, Christopher**  
Limits to Welfare  
Election Manifestos of Parties Represented in  
Parliament and some Reports to the Storting  
on Priorities for the Welfare State  
NIBR Working Paper 2003:121

**Bratt, Christopher**  
Adolescents in Drammen 2003. A Study  
NIBR Working Paper 2003:125

**Brevik, Ivar**  
Action Plan for Care of the Elderly  
Opinions of local authorities to the plan as an  
incentive to expand care service delivery  
NIBR Working Paper 2003:114

**Carlsson, Yngve**  
Between training, treatment and recreation  
An interim evaluation of Kristiansand's  
Gateakademiet (Street Academy)  
NIBR Working Paper 2003:116

**Feiring, Marte**  
Child Protection in Districts of Oslo  
A study of local initiatives  
NIBR Working Paper 2003:106

**Foss, Olaf and Dag Juvkam**  
Depopulation in Europe  
– some preliminary results  
Working Paper 2003:120

**Haaland, Thomas**  
Violence, Drugs and Alcohol  
A study of secondary school students in  
Skedsmo 2000 and 2002  
NIBR Working Paper 2003:110

**Haaland, Thomas**  
Violence, drugs and alcohol and attitudes  
towards immigrants  
A comparative study of adolescents in  
Drammen and Kristiansand  
NIBR Working Paper 2003:108

**Hanssen, Martin A. and Aud Tennøy**  
EIA Follow-up Studies and Monitoring  
NIBR Working Paper 2003:109

**Helgesen, Marit**  
Involving Patients in Local Authority Mental  
Healthcare  
NIBR Working Paper 2003:117

**Hovik, Sissel and Eva Irene Falthe**  
Protection of Setesdal Vesthei – Ryfylke  
Uplands landscape conservation area  
Attitudes of politicians and local organisations  
to conservation and management  
NIBR Working Paper 2003:126

**Johnstad, Tom**  
Oslo – City of Knowledge  
The Research Triangle Around Blindern and  
the University of Oslo.  
NIBR Working Paper 2003:104

**Juvkam, Dag**  
Residential, Job and Service Regions in  
Nordland County  
NIBR Working Paper 2003:112

**Kristofersen, Lars B.**  
Alternatives to Placement outside the Home  
Interim evaluation of neighbourhood projects  
under the County Child Protection Authority,  
Buskerud County  
NIBR Working Paper 2003:102

**Nenseth, Vibeke**  
Sustainability Barometer for Norwegian Cities  
NIBR Working Paper 2003:124

**Onsager, Knut and Olaf Foss**  
Regional Impact of Central Government Policy,  
Østfold County  
NIBR Working Paper 2003:107

**Orderud, Geir Inge**  
Correlation between Farming and  
Multifunctional Dimensions  
NIBR Working Paper 2003:105



**Pløger, John**

Norsk Form  
– A Practical Demonstration of Discursive Power  
NIBR Working Paper 2003:103

**Schmidt, Lene**

Housing +  
Report from a study trip  
NIBR Working Paper 2003:123

**Strand, Arvid, Kjell Harvold and Bjørn Moen**

Consulting Firms and Urban Development  
NIBR Working Paper 2003:102

**Sørli, Kjetil**

New Migration, Subsequent Migration and Other Urban Demographics  
NIBR Working Paper 2003:111

**Sørli, Kjetil**

Demographics and Mobility, Møre og Romsdal County  
Migration balance, age biases and prospects  
NIBR Working Paper 2003:101

**Toresen, Jøran**

Plan of Action for Care of the Elderly  
Closing the gaps in care provision rates and person/year input?  
NIBR Working Paper 2003:113

**Joint Reports****Lie, Ivar**

Regional Changes in the State Sector  
Changes in Public Sector Employment  
1980–2000 by Region Across a  
Centre–Periphery Dimension  
Joint Report 2003 NIBR/Norut NIBR  
Finnmark  
The report is available from [www.nibr.no](http://www.nibr.no)

**External publications****Articles in academic journals****Baklien, Bergljot and Line Nyhagen Predelli**

Autonomy and dependence in state cultural policy: a case study of the Foundation Culture of the Future in Sweden.  
International Journal of Cultural Policy, no. 3, 2003

**Hanssen, Gro Sandkjær**

Retten til effektiv deltakelse: underliggende demokratiteoretiske syn i folkerettslige bestemmelser om politiske minoritetsrettigheter.  
Nordisk Tidsskrift for Menneskerettigheter, nr. 4, 2003

**Lorentzen, Hilde**

Rettferdig fordeling av velferdsgoder.  
Tidsskrift for Velferdsforskning nr. 3, 2003

**Pløger, John**

(and Birgitte Mazanti)  
Community planning – from politicised places to lived spaces.  
Journal of Housing and the Built Environment, no. 4, 2003

**Predelli, Line Nyhagen**

Kjønn, religion og deltakelse: en case-studie av muslimske kvinner i Oslo.  
Sosiologisk tidsskrift, nr. 4, 2003

Emma Dahl: contesting the patriarchal regime of the Norwegian Missionary Society in Madagascar.  
Scandinavian Journal of History, no. 2, 2003

**Røe, Per Gunnar**

Kommunikasjon og mobilitet i den elektroniske byen – mot en sosialt nyansert teoretisering.  
Nordisk samhallsgeografisk tidsskrift, nr. 36, 2003

**Skogheim, Ragnhild og Per Gunnar Røe**

Makt og meningsdannelse i byutviklingen.  
Nordisk arkitekturforskning, nr. 2, 2003

**Sverdrup, Sidsel**

Towards an evaluation of the effects of laws: utilizing time-series data of complaints  
Evaluation, no. 3, 2003

**Vabo, Signy Irene**

Nye politiske styringsmodeller i norske kommuner – hvorfor er ikke særinteressene kommet på «rett spor»?  
Norsk Statsvitenskapelig Tidsskrift, nr. 2, 2003

**Vedeld, Trond**

Democratic decentralisation and poverty reduction – exploring the linkages  
Forum for Development Studies, no. 2, 2003

**Articles in other professional journals****Baklien, Bergljot**

Lederspalten.  
SosiologNytt, nr. 1–4, 2003

**Braathen, Einar**

Social funds – support or obstacle to local government reform?  
Formative process research on the Local Government Reform Programme in Tanzania.  
Project Brief, no. 2/2003

**Falleth, Eva Irene**

(sammen med Morten Edvardsen)  
Grønt partnerskap – et alternativ til naturvern? Erfaringer med bruks- og verneplan og frivillige avtaler på Svanøy.  
Plan, nr. 2/2003

**Falleth, Eva Irene, Sissel Hovik og Knut Bjørn Stokke**

Sammenligning av arealplanlegging og landskapsvern som virkemidler i forvaltningen av verneverdige områder.  
Utmark, nr. 1, 2003

**Foss, Olaf**

Ny regionalforskning?  
Regionale trender, nr. 1, 2003

Hva er ESPON?  
Regionale trender, nr. 2, 2003

**Guttu, Jon**

Drabantbyen som skyteskive.  
Fremtid for fortiden, nr. 3–4/2002

**Heløe, Leif Arne**

Fire alternative kommunemodeller.  
Regionale trender, nr. 2, 2003

Velferdskommune uforenlig med lokaldemokrati?  
Stat og styring, nr. 5, 2003

Vil demokratiet tape på større enheter?  
Horisont, nr. 2, 2003

**Holm-Hansen, Jørn, Lars B. Kristofersen og Trine Monica Myrvold**

Familielignende oppvekstvilkår for foreldreløse i Russland.  
Norges Barnevern, nr. 3/2003

**Johnstad, Tom**

VS2010 Innlandet: Innovasjon og verdiskaping.  
Regionale trender, nr. 1, 2003

Kunnskapsbyen Oslo.  
Regionale trender, nr. 2, 2003

**Juvkam, Dag**

Regioninndelinger og skjebnens vindskjevhet.  
Regionale trender, nr. 1, 2003

**Kann, Frode, Bjørn Moen og Aud Tennøy**

Byggesaksreformen i Plan- og bygningssloven – koster den mer enn den smaker?  
Regionale trender, nr. 1, 2003

**Langeland, Ove**

Hvorfor innovasjon og kapital hopper seg opp i storbyene.  
Regionale trender, nr. 1, 2003

Storbyene som innovasjonssentra.  
Horisont, nr. 2, 2003

**Moen, Bjørn**

Om ECON og ECONiseringa – noe nytt og spesielt? En kapittemelding.  
Regionale trender, nr. 1, 2003





**Myrvold, Trine Monica og Jøran Toresen**

Har kommunestørrelse noen betydning for effektivitet og kvalitet i kommunal tjenesteproduksjon?  
Regionale trender, nr. 2, 2003

**Myrvold, Trine Monica og Arvid Strand**

Kommunene er lite offensive i boligpolitikken.  
Plan, nr. 1/2003

**Mønnesland, Jan**

Regionalpolitikk i globaliseringens kjølvann.  
Regionale trender, nr. 2, 2003

**Orderud, Geir Inge og Bjørnar Sæther**

(sammen med Karen O'Brien og Guro Aandahl)  
Sårbarhetskartlegging – et utgangspunkt for klimadialog.  
Plan, nr. 5/2003

**Pløger, John**

For en demokratisk arkitekturdiskurs?  
Kontur/Arkitektur, nr. 7-8, 2003

Planlegging og etikk.

Plan, nr. 6, 2003

**Røe, Per Gunnar**

På gjenrodde stier.  
Plan, nr. 1, 2003

**Schmidt, Lene**

Boform som ber seg.  
Bo, nr. 5/2003

**Stokke, Knut Bjørn**

Forvaltning av verne- og næringsinteresser i kystsonen.  
Regionale trender, nr. 1, 2003

**Stigen, Inger Marie**

(sammen med Ståle Opedal og Per Læg Reid)  
Den norske sykehusreformen – balancegang mellom politisk kontroll og virksomhedsautonomi.  
FLOS (Forskningscenter for Ledelse & Organisation i Sykehusvæsenet)-senterets Nyhedsbrev, December 2003

**Sørli, Kjetil**

Bosettingspreferanser, flyttemotiver og flytteprosesser.  
Regionale trender, nr. 1, 2003

Demografiske mønsterkommuner.

Regionale trender, nr. 2, 2003

**Tennøy, Aud**

Prediksjoner og usikkerhet i trafikkfaglige rapporter i KU.  
Regionale trender, nr. 2, 2003

Vi kan sette taket, men ikke gulvet!

Plan, nr. 1/2003

**Books, compendia and anthologies****Baklien, Bergljot**

(and Diyanath Samarasinghe)  
Alcohol and poverty in Sri Lanka  
Colombo, Sri Lanka: FORUT, 2003

**Braathen, Einar**

O modelo nórdico de Seguridade Social.  
I: Previdência social no Brasil.  
Red. av V. A. Uemura.  
Brazil: Fundação Perseu Abramo, 2003

Democratic decentralisation in Mozambique.

I: Community & the state in Lusophone Africa.  
Red. av M. Newitt with P. Chabal and N. Macqueen.  
London: King's College, 2003

**Brevik, Ivar**

Utfordringer i kommunenes pleie- og omsorgstjenester.

I: Velferd, virkelighet og visjoner: mot bærekraftige kommuner: kap. 11, Kommunene som velferdsyter.  
(KOU 2003:3)  
Oslo: Kommunenes Sentralforbund, 2003

**Clausen, Sten-Erik**

Plasseringer utenfor hjemmet på 1990-tallet.  
I: Barn utenfor hjemmet: flytting i barnevernets regi.  
Red. av Elisabeth Backe-Hansen.  
Oslo: Gyldendal Akademisk, 2003

**Clausen, Sten-Erik og Lars B. Kristofersen**

Registrert omsorgssvikt fra 1993 til 2000.  
I: Barnevernboka 2003.  
Red. av Jarmund Veland.  
Stavanger: Senter for atferdsforskning, 2003

**Gotaas, Nora (red.)**

(sammen med Yngvil Grøvdal, Knut Papendorf og Kristian Andenes)  
SMED underveis: en prosessevaluering av Senter mot etnisk diskriminering.  
(Skriftserie 75/2003 fra Institutt for kriminologi og retts sosiologi, avdeling for retts sosiologi).  
Oslo: Universitetet i Oslo, 2003

**Guttu, Jon**

«Den gode boligen»: fagfolks oppfatning av boligkvalitet gjennom 50 år.  
(Con-text avhandling; 11)  
Oslo: Arkitekt høgskolen i Oslo, 2003

**Hanssen, Martin A.**

The plans and programmes directive in Norway.  
I: Environmental assessment of plans and programmes: Nordic experiences in relation to the implementation of the EU directive 2001/42/EC.  
Red. av Tuija Hilding-Rydevik.  
(Nordregio Report; 2003:4)  
Stockholm: Nordregio, 2003

Vurdering av spørsmålet om alternativer ved konsekvensutredning for ilandføring fra Ormen Lange.  
Notat for NOPEF.  
Oslo 16. september 2003

**Johnstad, Tom, Jan Erling Klausen og Jan Mønnesland**

Globalisering, regionalisering og distriktpolitikk.  
Oslo: Makt- og demokratiutredningen/Unipub forlag, 2003

**Johnstad, Tom (red.)**

(sammen med Morten Ørbeck)  
En klyngeanalyse for Innlandet: forprosjektnotat.  
(Østlandsforskning, Notat nr. 2003/12)  
Lillehammer: Østlandsforskning, 2003

**Klausen, Jan Erling og Trine Monica Myrvold**

(sammen med Anne Lise Fimreite (red.), S. Kvalvåg og S. Opedal)  
Styringssystem i storby: evaluering av styringssystemet i Bergen kommune.  
(Rapport 4-2003 Rokkansenteret)  
Bergen: Rokkansenteret, 2003

**Kleven, Terje**

Doubts and beliefs in Norwegian environmental bureaucracy.  
I: Planning in a global area.  
Red. av Andy Thornley og Yvonne Rydin.  
Aldershot: Ashgate, 2003

**Kleven, Terje (red.)**

Vision and strategy framework for management and development of Lake Victoria Basin: main report.  
Oslo: Statkraft Grøner m.fl., 2003

Vision and strategy framework for management and development of Lake Victoria Basin: baseline information report.  
Oslo: Statkraft Grøner m.fl., 2003

**Kristofersen, Lars B.**

Barn og unge i fosterhjem og institusjoner i 1990-årene: hvorfor avsluttes tiltakene?  
I: Barn utenfor hjemmet: flytting i barnevernets regi.  
Red. av Elisabeth Backe-Hansen.  
Oslo: Gyldendal Akademisk, 2003

**Langeland, Ove**

(sammen med Mona Bråten)  
Lønner det seg? Belønningssystemer og organisasjonseffekter i tradisjonelle og kunnskapsbaserte bedrifter.  
(Fafø-rapport, 423)  
Oslo: Fafø, 2003

**Lien, Inger-Lise**

«Å finne seg sjæl»: om innvandrerdømmens frihet, makt og motmakt.  
I: Ungdom, makt og mening.  
Red. av Fredrik Engelstad og Guro Ødegaard.  
Oslo: Makt- og demokratiutredningen/ Gyldendal Akademisk, 2003



**Chjenger – et innvandringsproblem?**

I: Gode formål – gale følger.

Red. av Ottar Brox, Tore Lindbekk og Sigurd Skirbekk.

Oslo: Cappelen Akademisk, 2003

Den flerkulturelle enhetsskolen.

I: Skolen er død – leve skolen.

Red. av Per Østerud.

Vallset: Oplandske Bokforlag, 2003

**Myrvold, Trine Monica og Jøran Toresen**

Har kommunestørrelse noen betydning for effektivitet og kvalitet i kommunal tjenesteproduksjon?

I: Er sammenslutning av kommuner svaret på KommuneNorges utfordringer? Om konsekvensene ved endring av kommunestrukturen.

Oslo: Kommuneforlaget, 2003

**Mønnesland, Jan**

Local government finance in the Nordic countries.

I: Regional public finances.

Red. av Jan Mønnesland.

(European research in regional science; 13)  
London: Pion, 2003

**Mønnesland, Jan og Bjørn Moen m.fl.**

Grenseoverskridende samarbeid har gitt mersmak: sluttvurdering av Interreg IIA-programmen Ett Gränslöst samarbete, Inre Skandinavien och Nordens gröna bälte 1995–1999.

Stockholm: NUTEK, 2003

**Mønnesland, Jan og Sigrid Skålnes m.fl.**

Mid-term evaluation of the Interreg IIIB North Sea Region.

ECORYS Nederland BV, ECOTEC Ltd., NIBR, MR Gesellschaft für Regionalberatung GmbH, 2003

**Orderud, Geir Inge**

Ungdom og unge voksne i Utkant-Norge: bosettingspreferanser og oppfatninger om livet i utkantene.

I: Ung i utkant: aktuell forskning om glesbygdungdomar i Norden.

Red. av Helena Helve.

(TemaNord 2003:519)

København: Nordisk Ministerråd, 2003

**Predelli, Line Nyhagen**

Issues of gender, race, and class in the Norwegian Missionary Society in nineteenth century Norway and Madagascar.

Lewiston, N.Y.: Edwin Mellen Press, 2003

Uformelle veier til makt: om

minoritetskvinnens politiske innflytelse.

(Makt- og demokratiutredningen, Rapportserien; 60)

Oslo: Makt- og demokratiutredningen/Unipub forlag, 2003

Contesting the mission's patriarchal gender regime: single Norwegian missionary women in nineteenth century Madagascar.

I: Gender, race and religion: Nordic missions 1860–1940.

Red. av Inger Marie Okkenhaug.

(Studia Missionalia Svecana; 91)

Uppsala: Svenska institutet för missionsforskning, 2003

Kvinneorganisasjonenes rolle i integrasjonsprosessen, eller Økt kvinnemakt? Minoritetskvinnens organisering, deltakelse og innflytelse på offentlig politikk

I: Den frivillige sektors bidrag til integrasjon af flyktninge og indvandrere i Norden.

København: Nordisk Ministerråd, 2003

Økt kvinnemakt? Minoritetskvinnens organisering, deltakelse og innflytelse på offentlig politikk.

I: Cultural diversity and integration in the Nordic welfare states. Proceedings of the 12th Nordic migration conference 2003.

Red. av Annika Forsander og Matti Similä.

Helsinki: CEREN, 2003

**Schmidt, Lene**

Boliger med nogo attåt: nye bofellesskap i et historisk perspektiv.

(Oppdatert nettutgave på www.husbanken.no)  
Oslo: Husbanken, 2003

Bolig +: nye boligløsninger for et bedre hverdagsliv.

Oslo: Husbanken/NIBR, 2003

**Stigen, Inger Marie**

(sammen med Ståle Opedal og Marit Tovsen)

Flat struktur – er det veien å gå?

Oslo: Kommuneforlaget, 2003

**Sørli, Kjetil**

Bosetting, flytting og regional utvikling.

I: Det norske samfunn.

Red. av Ivar Frønes og Lise Kjølsvold.

Oslo: Gyldendal, 2003

**Vedeld, Trond**

Decentralisation and deconcentration and primary education: appraisal of two UNDP project proposals for NORAD support to Mali (sammen med N. Santcross, C. Helgø og S. Doumbia).

Oslo 15. november 2003

**Vestby, Guri Mette**

Medvirkning som byggstein i demokratiutvikling?

I: Ungdom, makt og mening.

Red. av Fredrik Engelstad og Guro Ødegaard.

Oslo: Makt- og demokratiutredningen/  
Gyldendal Akademisk, 2003

**Vestby, Guri Mette**

(sammen med Trude Haram Frølich)

Ingen vei tilbake: innovative læringsmiljøer med bruk av IKT: erfaringsrapport fra Nesodden videregående skole.

Oslo: Forsknings- og kompetansenettverket IT i utdanning, Universitetet i Oslo, 2003

## Chronicles and reviews

**Grødeland, Åse Berit**

Svante Cornell: Autonomy and conflict: ethnoterritoriality and separatism in the South Caucasus – cases in Georgia (Uppsala: Uppsala Universitet 2002) (bokanmeldelse).  
Nordisk Øst-Forum, nr. 4, 2003

**Heløe, Leif Arne**

Nå må vi gjøre noe med kommunene.  
Aftenposten 20.9.2003

Den fjerde statsmakt. Kommunernes Landsforening i dansk politik (bokanmeldelse).  
Norsk Statsvitenskapelig Tidsskrift, nr. 1, 2003

Sunnhet og sykdom i kulturelt perspektiv (bokanmeldelse).

Tidsskrift for Velferdsforskning, nr. 3, 2003

**Langeland, Ove**

Økonomiske belønningssystemer (debattinnlegg).

Aftenposten 14.12.2003

**Predelli, Line Nyhagen**

Minoritetskvinnens innflytelse.  
Dagsavisen 27.4.2003

Frivillig organisering som kanal for kvinners politiske innflytelse. Bokanmeldelse av «Svekket kvinnemakt? De frivillige organisasjonene og velferdsstaten», red. av Nina Berven og Per Selle (2001).  
Kvinneforskning, nr. 1, 2003

Anmeldelse av «Yet another sister for Africa: thirty-six female missionaries in Natal and Zululand», av Karin Sarja (Avhandling Uppsala universitet 2002).  
Scandinavian Journal of History, no. 3–4, 2003





## Conferences

### International conferences and seminars

#### **Baklien, Bergjot**

Evaluation and development work.  
Arranged by Save the Children Norway, 9.4.2003

Paper: Opportunities and limitations of formative dialogue research projects and programmes in developing countries

Local action: alcohol, drugs and development.

Arranged by FORUT,  
Culture Club, Dambulla, Sri Lanka  
11.-15.6.2003

Paper 1: Alcohol and poverty in rural areas in Sri Lanka

Paper 2: Gender based violence in Sri Lanka

LPD-conference Public policies meet local politics.

Arranged by NIBR, Oslo 21.-22.10.2003  
Paper: Formative process research in a phasing-out process

Civil society and donor-state-NGO (DOSTANGO) system.

Arranged by The comparative research programme on NGOs, CMI og Universitetet i Bergen, Bergen 30.-31.10.2003

Paper: Norwegian NGOs, their southern partners and the strengthening of civil society: some observations from the field (with Johan Helland, CMI)

#### **Bjørnsen, Hild-Marte**

Nordic regional development – policy, models and data.

Arranged by Nordic section - Regional Science Association/SINTEF Teknologiledelse, Trondheim 5.-8.11.2003

Paper: Behavioural modelling: joint decisions

#### **Braathen, Einar**

The role of the state in the struggle against poverty.

Arranged by CLACSO/CROP/FJN, Recife, Brasil 19.-21.3.2003

Paper: Social funds: a technocratic-clientelistic response to poverty?

III Forum sobre democracia participativa.

Arranged by Municipality of São Paulo, São Paulo, Brasil 26.-27.5.2003

Paper: Democracia participativa e erradicação da pobreza

19th IPSA Congress: Comparative study of local government and politics.

Arranged by International Political Science Association, Durban, Sør-Afrika 29.6.-4.7.2003  
Paper: Divergence of decentralisation: a comparison of Mozambique, Tanzania and Zambia

19th IPSA Congress: Public policy, institutions and globalisation.

Arranged by International Political Science Association, Durban, Sør-Afrika 29.6.-4.7.2003  
Paper: Anti-globalisation and anti-statism: new roles of the nation-state in social policy

Local politics and development.

Arranged by Network on Local Politics and Development and NIBR, Oslo 21.-22.10.2003

Paper: The political economy of social capital: description of a research project

Politics and poverty: Norwegian Association for Development Research annual conference 2003

Arranged by NIBR and Norwegian Association for Development Research (NFU), Oslo 23.-24.10.2003

Paper: Overloaded communities, sidelined district councils? Self-help and co-production in poverty-stricken Tanzania

Democratic governance.

Arranged by the Royal Norwegian Embassy, Maputo, Mosambik 3.11.2003

Paper: Democratic governance – Mozambique and Tanzania compared

#### **Carlsson, Yngve**

1st International Baltic Sea conference on crime prevention.

Arranged by Landes-Rat für Kriminalitätsverhütung, Schleswig Holstein, Lübeck 28.-29.3.2003

Paper: Local strategies for dissolving a neo-nazi group: the case of Kristiansand, Norway

Intervensjon overfor voldelige ungdomsgrupper.

Arranged by Reykjavik kommune, Reykjavik, 7.-9.4.2003

Paper: Foredrag og rådgivning

#### **Feiring, Marte**

7th International dilemmas for the human services conference.

Arranged by Staffordshire University, Stoke, England 3.-5.9.2003

Paper: Reforms in municipal mental health services in Norway: high hopes, ambiguous implementation (with Helge Ramsdal and Marit Helgesen)

#### **Grødeland, Åse Berit**

Blue Bird conference: Strengthening states, consolidating democracies: an agenda for state reform in Eastern Europe.

Arranged by United Nations Development Programme og European University Institute (Firenze), Budapest, Ungarn 16.-18.5.2003

Paper: Low-level corruption in the former Soviet Union and East Central Europe

11th International anti-corruption conference.

Arranged by Transparency International og Ministry of Justice, South Korea,

Seoul, Syd-Korea 25.-29.5.2003  
Paper: Informal networks and corruption in East Central Europe and the Balkans

Corruption scandals in public administration and politics.

Arranged by Panteion University, Athen 20.-22.11.2003

Paper: Informal networks in East Central Europe and the Balkans

#### **Haug, Marit**

Seminar om evaluering.

Arranged by OECD, Paris 30.3.2003

Paper: Impact assessment of civil society organisations: the case of Sri Lanka

Poverty and conflict in Sri Lanka.

Arranged by CEPA, IMCAP og SLAAS, Colombo, Sri Lanka 23.-25.11.2003

Paper: Challenges for empowering community based organisations

#### **Helgesen, Marit**

7th International dilemmas for the human services conference.

Arranged by Staffordshire University, Stoke, England 3.-5.9.2003

Paper: Reforms in municipal mental health services in Norway: high hopes, ambiguous implementation (with Helge Ramsdal and Marte Feiring)

12. Nordiske kommunalforskningskonferanse.

Arranged by Göteborg Universitet, Göteborg 28.-30.11.2003

Paper: Efficiency in service provision in UDCs in Nordic cities

#### **Holm-Hansen, Jørn**

ECPR joint sessions of workshops: Explaining environmental policy in Central Eastern Europe.

Arranged by European Consortium for Political Research, Edinburgh, Skottland 28.3.-2.4.2003

Paper: The use of new environmental policy instruments in Latvia and Russia

Children and residential care.

Arranged by Stockholms Universitet, Stockholm 12.-15.5.2003

Paper: Alternatives to orphanages in Northwest-Russia: preconditions and obstacles (with M.V. Firsov, Lars B. Kristofersen, L.S. Malik, L.V. Mardakhaev and Trine Monica Myrvold)

IXth ISPCAN regional European conference on prevention of child abuse and neglect.

Arranged by International Society for Prevention of Child Abuse and Neglect, Warszawa, Polen 29.-31.8.2003

Paper: Alternatives to orphanages in Northwest-Russia (with Trine Monica Myrvold, Lars B. Kristofersen, L. Malik, M. V. Firsov, L.V.Mardakhaev)



Russian-Nordic network on developing alternatives to traditional orphanages in Russia.

Arranged by NIBR and The Norwegian University Centre of St. Petersburg, St. Petersburg, Russland 23.-26.11.2003  
Paper: Alternatives to orphanages in Northwest-Russia (with Trine Monica Myrvold, Lars B. Kristofersen, L. Malik, M. V. Firsov, L.V.Mardakhaev)

Paper: Learning across borders – a framework for analysing «policy transposition»

#### **Hovik, Sissel**

Democratic network governance conference. Arranged by Centre for Democratic Network Governance, Roskilde University, København 22.-23.5.2003  
Paper: Private – public partnership in local nature conservation in Norway (with Morten Edvardsen)

6th Nordic conference on environmental social science.

Arranged by Åbo Akademi and Turku universitet, Åbo 12.-14.6.2003  
Paper: Coastal zone planning as multilevel governance?

#### **Klausen, Jan Erling**

European urban development: the future of European cohesion policy.  
Arranged by Metropolitan Research Institute (Városkutás Kft), EURA and EUROCITIES, Budapest, Ungarn 28.-29.8.2003  
Paper: Democratic network governance and community involvement (with Gro Sandkjær Hanssen and Signy Irene Vabo)

Russia-Norway seminary.  
Arranged by Eurograd Institut, St. Petersburg, Russland 1.6.-17.11.2003  
Paper: Political participation in local government

Democratic network governance conference. Arranged by Centre for Democratic Network Governance, Roskilde University, København 22.-23.5.2003  
Paper: Legitimacy, democracy, and community involvement in local governance (with D. Sweeting)

#### **Kristofersen, Lars B.**

Children and residential care. Arranged by Stockholms Universitet, Stockholm 12.-15.5.2003  
Paper: Alternatives to orphanages in Northwest-Russia: preconditions and obstacles (with M.V. Firsov, Jørn Holm-Hansen, L.S. Malik, L.V. Mardakhaev and Trine Monica Myrvold)

Anglo-Norwegian child welfare seminar. Arranged by Ministry of Children and Family Affairs, Svolvær 1.-3.6.2003  
Paper: Alternatives to orphanages in Northwest-Russia: a project presentation (with Jørn Holm-Hansen, Trine Monica Myrvold and Larisa Malik)

IXth ISPCAN regional European conference on prevention of child abuse and neglect. Arranged by International Society for Prevention of Child Abuse and Neglect, Warszawa, Polen 29.-31.8.2003  
Paper 1: The longitudinal study of child welfare clients (1990-2003) in reflection of the evaluation of the interdisciplinary escalation programme on mental health for children and adults in Norway (1999-2006)

Paper 2: Alternatives to orphanages in Northwest-Russia (with Jørn Holm-Hansen, Trine Monica Myrvold, L. Malik, M. V. Firsov, L.V.Mardakhaev)

Russian-Nordic network on developing alternatives to traditional orphanages in Russia.  
Arranged by NIBR and The Norwegian University Centre of St. Petersburg, St. Petersburg, Russland 23.-26.10.2003  
Paper 1: Do we need a network? For what do we need a network?

Paper 2: Alternatives to orphanages in Northwest-Russia (with Trine Monica Myrvold, Jørn Holm-Hansen, L. Malik, M. V. Firsov, L.V.Mardakhaev)

#### **Langeland, Ove**

Reinventing regions in a global economy. Arranged by Regional Science Association International, Pisa, Italia 12.-15.4.2003  
Paper: The venture capital innovation model: urban and high-tech? (with Geir Inge Orderud)

Creating, sharing and transferring knowledge: the role of geography institutions and organizations.  
Arranged by Danish Research Unit for Industrial Dynamics (DRUID), København 12.-14.6.2003  
Paper: Knowledge economy and spatial clustering: the role of knowledge-intensive business services and venture capital firms in the innovation system (with Heidi Wiig Aslesen, STEP)

Knowledge, education, and future societies. Arranged by Society for advancement of socio-economics (SASE), Aix en Provence, Frankrike 26.-28.6.2003  
Paper: Human capital and reward policies in «old» and «new» economy firms (with Mona Bråten, Fafo)

#### **Lien, Inger-Lise**

13. World congress of criminology. Arranged by International Society of Criminology, Rio de Janeiro, Brasil 10.-15.8.2003  
Paper: Criminal gangs and their connections

Islam in South Asia. Arranged by The Pakistan Workshop 2003, Rook How, England 9.-11.5.2003  
Paper: Local governance and democratization in Pakistan

#### **Myrvold, Trine Monica**

Children and residential care. Arranged by Stockholms Universitet, Stockholm 12.-15.5.2003  
Paper: Alternatives to orphanages in Northwest-Russia: preconditions and obstacles (with M.V. Firsov, Lars B. Kristofersen, L.S. Malik, L.V. Mardakhaev and Jørn Holm-Hansen)

IXth ISPCAN regional European conference on prevention of child abuse and neglect. Arranged by International Society for Prevention of Child Abuse and Neglect, Warszawa, Polen 29.-31.8.2003  
Paper: Alternatives to orphanages in Northwest-Russia (with Jørn Holm-Hansen, Lars B. Kristofersen, L. Malik, M. V. Firsov, L.V.Mardakhaev)

Russian-Nordic network on developing alternatives to traditional orphanages in Russia.  
Arranged by NIBR and The Norwegian University Centre of St. Petersburg, St. Petersburg, Russland 23.-26.10.2003  
Paper: Alternatives to orphanages in Northwest-Russia (with Jørn Holm-Hansen, Lars B. Kristofersen, L. Malik, M. V. Firsov, L.V.Mardakhaev)

#### **Nenseth, Vibeke**

Nordisk forskningskonferanse om bærekraftig byutvikling. Arranged by NSSB og NIBR, Oslo 15.-16.5.2003  
Paper: Samfunnmessig selvorganisering for en mer bærekraftig byutvikling – nye planleggingsutfordringer

Politics and knowledge – the new knowledge society. Arranged by Institutt for sosiologi og Institutt for administrasjon og organisasjonsteori (UiB), Bergen 21.-22.5.2003  
Paper: Knowledge pluralism in environmental office





**Orderud, Geir Inge**

Reinventing regions in a global economy.  
Arranged by Regional Science Association  
International, Pisa, Italia 12.-15.4.2003  
Paper: The venture capital innovation model:  
urban and high-tech? (with Ove Langeland)

New economic spaces – new economic  
geographies?  
Arranged by International Geographical  
Union, Vancouver, Canada 10.-15.8.2003  
Paper: The house building industry  
– territorial embeddedness versus circulation  
and distanciation

Nordic regional development – policy, models  
and data.  
Arranged by Nordic section – Regional Science  
Association/SINTEF Teknologiledelse,  
Trondheim 5.-8.11.2003  
Paper: Flytting – motiver og prosesser

**Schmidt, Lene**

Nordisk møte om skolebyggeri  
– forskernettverk.  
Arranged by By og byg, Statens  
byggeforskningsinstitutt, København,  
Hørsholm, Danmark 10.-11.4.2003  
Paper: Fysisk aktivitet i skole og SFO

BOLIG+ studietur til Danmark.  
Arranged by NIBR and Boligtrivsel i Centrum,  
Danmark, København 21.-23.10.2003  
Paper: BOLIG+, boliger med fellesanlegg og  
servicetilbud

**Schou, Arild**

3rd International conference on  
decentralisation.  
Arranged by Center for Local and Regional  
Governance, Manila, Filippinene 7.-9.10.2003  
Paper: Donor support to decentralisation and  
local governance

**Skogheim, Ragnhild**

Nordisk forskningskonferanse om bærekraftig  
byutvikling.  
Arranged by NSSB/NIBR, Oslo 15.-16.5.2003  
Paper: Miljøbevissthet og miljøhandlinger:  
samsvar og uoverensstemmelser

**Stigen, Inger Marie**

17th Nordic conference on business studies.  
Arranged by Nordisk foretaksøkonomisk  
forening, Reykjavik, Island 14.-16.8.2003  
Paper: The Nordic hospital reform – balancing  
political control and enterprise autonomy  
(with Ståle Opedal, Rogalandsforskning and  
Per Lægred, Rokkansenteret)

**Stokke, Knut Bjørn**

The network society: the new context for  
planning: ACSP-AESOP third joint congress.  
Arranged by Association of Collegiate Schools  
of Planning og Association of European  
Schools of Planning,  
Leuven, Belgia 8.-12.7.2003  
Paper: The role of social capital in spatial  
planning for resource management (with  
Yvonne Rydin, Eva Irene Falleth and Hans  
Olav Bråta)

Nordic symposium «Local planning change  
– new possibilities and roles».  
Arranged by Forum for utdanning i  
samfunnsplanlegging, Høgskolen i  
Lillehammer, NIBR, Nordregio og Sveriges  
Lantbruksuniversitet,  
Lillehammer 14.-16.8.2003

Paper: Partnerships in resource management  
and planning: social capital and institutional  
capacity as analytical frameworks

Stakeholder participation and water quality  
criteria.  
Arranged by North Sea Local Implementation  
of the Water Framework Directive,  
Jeløy 6.-7.10.2003  
Paper: Public participation in relation to the  
water framework directive and the planning  
and building act

**Strand, Arvid**

Nordisk forskningskonferanse om bærekraftig  
byutvikling.  
Arranged by NSSB/NIBR, Oslo 15.-16.5.2003  
Paper: Realisering av bærekraftig byutvikling  
– det er vanskelig det!

**Sverdrup, Sidsel**

6th Conference of the European Sociological  
Association: Aging societies: new sociology.  
Arranged by ESA,  
Murcia, Spania 23.-26.9.2003  
Paper: Measuring impact and effects of  
preventive means and strategies

**Sørli, Kjetil**

Nordiskt seminar om bostads- og  
urbanforskning.  
Arranged by Universitetet i Uppsala,  
Gävle, Sverige 22.-24.10.2003  
Paper: Flytting og bosetting i  
livsløpsperspektiv: vi følger noen årskull fra de  
er barn til voksne

**Tennøy, Aud**

Spatial planning for sustainable development,  
seminar.  
Arranged by Nordregio, Stockholm 2.-3.6.2003  
Paper: Is it possible to transform the vision of  
global sustainable development into local  
urban planning and development?

Trafikdage på Aalborg universitet.

Arranged by universitetet,  
Aalborg, Danmark 25.-26.8.2003  
Paper: Bidrar bruk av transportanalyser i  
byplanleggingen til vekst i biltrafikken?

**Vedeld, Trond**

Politics and poverty: Norwegian Association  
for Development Research annual conference  
2003.  
Arranged by NIBR and Norwegian Association  
for Development Research (NFU),  
Oslo 23.-24.10.2003  
Paper: Democratic decentralisation and  
poverty reduction – exploring the linkages

**Vestby, Guri Mette**

6th Conference of the European Sociological  
Association: Aging Societies: new sociology  
Arranged by ESA,  
Murcia, Spania 23.-26.9.2003  
Paper: Digital opportunities, analytical  
challenges and ethical issues

**Conferences and seminars in  
Norway****Aasen, Berit**

Vietnam seminar.  
Arrangert av Fiskerifaglig forum for  
utviklingssamarbeid,  
Bergen 30.-31.10.2003  
Paper: Vietnam: fisheries, institutions and  
bureaucratic systems

**Baklien, Bergljot**

Verdt å vite om grunnopplæringen.  
Seminar arrangert av Læringsenteret,  
Oslo 13.10.2003  
Paper: Evaluering og  
implementeringsprosesser: hvordan skal man  
nyttiggjøre seg evalueringsforskningen?

SIRUS: faglig profil og presentasjon utad.  
Arrangert av Statens institutt for  
rusmiddelforskning, Oslo 26.-27.11.2003  
Paper: SIRUS sett fra andre  
samfunnsforskingsmiljøer

**Brevik, Ivar**

Statens seniorråds møte.  
Arrangert av Sosial- og helsedirektoratet,  
Oslo 6.1.2003  
Paper: Utbyggingen av pleie- og  
omsorgstjenestene og Handlingsplan for  
eldreomsorgen – ledd i en lengre utvikling

Ledersamling.

Arrangert av Larvik kommune,  
Bolkesjø 6.1.2003  
Paper: Nyfattigdom – konsekvenser for barn  
og unge

Møtebørs for ledere i sykehjem.  
Arrangert av Faglig forum for helse- og  
sosialtjenesten, Trondheim 6.2.2003  
Paper: Status for utviklingen av offentlig  
eldreomsorg med fokus på institusjoner, bo-  
og servicesenter og omsorgsboliger

AOFs opplysningsforum for eldre.  
Arrangert av AOF, Oslo 20.3.2003  
Paper: De nyfattede er ikke de gamle

Nyfattigdom og organisasjonenes ansvar:  
seminar.  
Arrangert av Landsrådet for Norges barne- og  
ungdomsorganisasjoner, Oslo 8.4.2003  
Paper: Hvem er fattige i Norge i 2003?

Boligpolitikk under avvikling (?): om  
konflikten mellom markedsstyring og  
samfunnsansvar: seminar.  
Arrangert av Sør-Trøndelag fylke,  
Trondheim 23.4.2003  
Paper: Boligpolitikk under avvikling? Status  
og fordringer om boligsosial politikk



Seminar om melding om sosiale tjenester.  
Arrangert av Bergen kommune,  
Bergen 27.5.2003  
Paper: Sosialhjelpklienter og offentlig innsats:  
de nye veiene er lik de gamle – bolig,  
kompetanse, arbeid – men fordrer ny  
organisering

Konferanse om hva som er god kvalitet i  
omsorgstjenestene.  
Arrangert av Faglig forum for helsetjenestene,  
Oslo 12.6.2003  
Paper: Handlingsplan for eldreomsorgen og  
utbyggingen av omsorgstjenestene: ledd i en  
lengre utvikling

Seminar om bostedsløshet.  
Arrangert av Stiftelsen Kirkens sosialtjeneste,  
Oslo 3.9.2003  
Paper: Om fattigdom, protestantisk  
arbeidsmoralisme og mangel på offentlige  
tiltak for bostedsløse

Debattmøte.  
Arrangert av Aksjonsgruppe mot nød,  
Fellesorganisasjonen, AUF og ungdomslagene  
i de politiske partiene i Bergen,  
Bergen 8.9.2003  
Paper: Om nyfattigdom og sosialhjelpssatser i  
Bergen

IV norske kongress i aldersforskning: om  
risiko og ressurser i et aldrende samfunn.  
Hurdal 6.-7.11.2003  
Paper: Handlingsplan for eldreomsorgen  
– ledd i en lengre utvikling

Seminar om bostedsløse.  
Arrangert av Trondheim kommune og  
Husbanken, Trondheim 28.11.2003  
Paper: Svekket toleranse for andre – truer den  
alles rett til å bo?

**Carlsson, Yngve**  
Fagkonferanse om vold og velferd.  
Arrangert av Norges forskningsråd,  
Voksenåsen, Oslo 10.-11.6.2003  
Paper: «Forebyggingskjøkkenet»

Samordning av tiltak og tjenester overfor barn  
og unge.  
Konferanse arrangert av Barne- og  
familiedepartementet, Sosialdepartementet,  
Helsedepartementet og Kirke-, utdannings- og  
forskningsdepartementet,  
Oslo 9.9.2003  
Paper: Hvordan skal barn og unge få lett  
tilgjengelige tiltak og tjenester?

Faglig forum: Jakten på det gode liv.  
Arrangert av NIBR 24.9.2003  
Paper: «Forebyggingskjøkkenet».  
Velferdskommunens problemekspansjon og  
den internasjonale 'programindustrien'  
– forskningsutfordringer

Barne- og ungdomskonferansen 2003:  
Samspill og samarbeid om barn og unge.  
Arrangert av Barne- og familiedepartementet,  
Oslo 28.10.2003  
Paper: Samspill og samarbeid i den  
spesialiserte velferdskommunen

**Falleth, Eva Irene**  
Forvaltning og næringsutvikling i og rundt  
vernedede områder.  
Konferanse arrangert av Bygdefolkets  
Studieforbund,  
Dombås 1.4.2003  
Paper: Bruk og vern i vernedede områder

Seminar om kommuneplanlegging og  
samordnet planveiledning.  
Arrangert av Fylkesmannen i Nordland,  
Bodø, 13.5.2003  
Paper: Erfaringer med samordning av  
økonomiplanlegging og kommuneplanens  
strategiske del

Kulturlandskap – politikk og forvaltning.  
Seminar arrangert av Fylkesmannen i Møre og  
Romsdal,  
Geiranger 20.8.2003  
Paper: Virkemidler og forvaltningsmodeller i  
verneverdige områder

NIBR-treff 2003.  
Arrangert av NIBR,  
Oslo 12.11.2003  
Paper: Hvordan dannes nettverk: om  
egenorganisering og gjennomslagskraft i  
Setesdal Vesthei – Ryfylkeheiane

**Grødeland, Åse Berit**  
Seminar arrangert av Norsk utenrikspolitisk  
institutt,  
Oslo 4.6.2003  
Paper: Uformelle nettverk i Øst-Europa og på  
Balkan

Seminar arrangert av Utlendingsnemnda,  
Oslo 16.6.2003  
Paper: Sentral Asia: en introduksjon

**Guttu, Jon**  
Seminar om tettstedsutvikling.  
Arrangert av Øvre Romerike Utvikling,  
Klækken, 3.4.2003  
Paper: Gode og bærekraftige tettsteder i  
skyggen av storbyen – hvordan utvikle gode  
lokalmiljøer?

Sosial boligbygging i vår tid.  
Seminar arrangert av Arkitekthøgskolen i  
Oslo,  
Oslo 2003  
Paper: «Ein juvel i den sosialdemokratiske  
orden»: om Husbankens rolle i å sikre rimelig  
boligkvalitet

**Heløe, Leif Arne**  
Seminar arrangert av Troms fylkeskommune,  
Tromsø 23.9.2003  
Paper: Utviklingen av tannlegeundervisningen  
i Norge

Seminar arrangert av Norsk sykepleierforbund,  
Oslo 4.11.2003  
Paper: Gir oppgaveporteføljen i  
velferdskommunene rom for lokal råderett?

**Holm-Hansen, Jørn**  
Prosjektlederkonferanse for Northern  
dimension partnership in public health and  
social wellbeing.  
Arrangert av Helsedepartementet,  
Oslo 28.10.2003  
Paper: Alternativer til institusjonsplassering:  
tidlige erfaringer fra et prosjekt i Arkhangelsk  
(sammen med Lars B. Kristofersen og Trine  
Monica Myrvold)

**Hovik, Sissel**  
11. nasjonale fagkonferanse i statsvitenskap.  
Arrangert av Institutt for sosiologi og  
statsvitenskap, Norges teknisk-  
naturvitenskapelige universitet,  
Trondheim 8.-10.1.2003  
Paper: National environmental goals in search  
of local institutions (sammen med Marit  
Reitan, NTNU)

**Johnstad, Tom**  
Artikkelkrivingsseminar.  
Arrangert av VS2010-programmet,  
Oslo 6.3.2003  
Paper: Clusters, social capital and civic  
entrepreneurship

NIBR-treff 2003.  
Arrangert av NIBR,  
Oslo 12.11.2003  
Paper: Kan nettverk bidra til innovasjon? Om  
lettmetallklynga på Raufoss-Toten





**Kristofersen, Lars B.**

Seminar om forskningsmessig evaluering av Opptappingsplanen for psykisk helse.  
Arrangert av Norges forskningsråd, Holmen, Asker 12.–13.6.2003  
Paper: Bidrar Opptappingsplanen for psykisk helse til at risikoutsatte barn får mer fleksible hjelpetjenester?

Prosjektlederkonferanse for Northern dimension partnership in public health and social wellbeing.

Arrangert av Helsedepartementet, Oslo 28.10.2003  
Paper: Alternativer til institusjonsplassering: tidlige erfaringer fra et prosjekt i Arkhangelsk (sammen med Trine Monica Myrvold og Jørn Holm-Hansen)

Psykisk helse-konferanse.  
Arrangert av Sosial- og helsedirektoratet, Oslo 11.11.2003  
Paper: De risikoutsatte barna: blir de sett?

**Langeland, Ove**

Oslofjordregionen – en konkurransefaktor i Europa?  
Konferanse arrangert av Norske Sivilingeniørers forening, Oslo 30.10.2003  
Paper: Oslo – kunnskapsby og innovasjonssenter

**Lien, Inger-Lise**

Oppvekstbilder i et flerkulturelt samfunn.  
Arrangert av Barn- og ungdomsfaglig forum, Sandefjord 26.–27.5.2003  
Paper: Kjønn og ære i en flerkulturell by

Fagkonferanse om vold og velferd.  
Arrangert av Norges forskningsråd, Voksenåsen, Oslo 10.–11.6.2003  
Paper: Gjenger i fire byer

Barne- og ungdomskonferansen 2003: Samspill og samarbeid om barn og unge.  
Arrangert av Barne- og familiedepartementet, Oslo 28.10.2003  
Paper: Isolerte jenter

Har muslimer og humanetikere felles verdier?  
Seminar arrangert av Humanetisk forbund, Oslo 5.11.2003  
Paper: Har muslimer og humanetikere felles verdier?

**Myrvold, Trine Monica**

Seminar om regionalpolitikk.  
Arrangert av Effektivvalget, Gardermoen 14.1.2003  
Paper: Små kommuner – store oppgaver: strategier for sikring av god kommunal oppgaveløsning

Dialogen mellom innbyggerne og folkevalgte.  
Seminar arrangert av Kommunenes Sentralforbund, Oslo 19.2.2003  
Paper: Et offentlig rom for lokaldemokratiet

Evaluering av styringssystemet i Bergen kommune.  
Arrangert av Bergen byråd, Bergen 27.2.2003  
Paper: Effekten av parlamentarisk styringsmodell for de politiske organene

Evaluering av styringssystemet i Bergen kommune.  
Arrangert av Bergen bystyre, Bergen 25.3.2003  
Paper: Effekten av parlamentarisk styringsmodell for de politiske organene

Seminar om forskningsmessig evaluering av Opptappingsplanen for psykisk helsevern.  
Arrangert av Norges forskningsråd, Holmen, Asker 12.–13.6.2003  
Paper: Et helhetlig tilbud til mennesker med psykiske lidelser?

Prosjektlederkonferanse for Northern dimension partnership in public health and social wellbeing.  
Arrangert av Helsedepartementet, Oslo 28.10.2003  
Paper: Alternativer til institusjonsplassering: tidlige erfaringer fra et prosjekt i Arkhangelsk (sammen med Lars B. Kristofersen og Jørn Holm-Hansen)

Seminar om kommunesammenslutninger.  
Arrangert av Kommunenes Sentralforbund, Gardermoen 26.–27.11.2003  
Paper: «Hvorfor være stor, når man er lykkelig som liten?» Mulige effekter av kommunesammenslutninger

Konferanse om psykisk helse.  
Arrangert av Norges forskningsråd, Oslo 9.12.2003  
Paper: Visjoner og realiteter i kommunenes utbygging av tjenestetilbud til mennesker med psykiske problemer

Konferanse om psykisk helse.  
Arrangert av Sosial- og helsedirektoratet, Oslo 14.12.2003  
Paper: Et helhetlig tilbud til mennesker med psykiske lidelser?

**Nenseth, Vibeke**

Byutviklingskonferanse.  
Arrangert av Norges forskningsråd, Byutviklingsprogrammet, Trondheim 18.–19.6.2003  
Paper: Bærekraftig byutvikling – med drahjelp fra urbane aktører?

Seminar om indikatorer for bærekraftig byutvikling.  
Arrangert av Miljøalliansen, Oslo 20.10.2003  
Paper: Bærekraftbarometer for norske byer

Konferanse om idrett, inklusjon og modernisering.  
Arrangert av Norges forskningsråd, Idrettsprogrammet, Oslo 27.–28.11.2003  
Paper: Kommuneplanlegging for «idrett for alle» – eller idrett bare for dem med anlegg for det?

**Orderud, Geir Inge**

Regional climate impacts in Norway: workshop on research and assessments.  
Arrangert av Norges forskningsråd, Klimaeffekt-programmet, Oslo 5.11.2003  
Paper: Finnmark county – regional patterns

**Predelli, Line Nyhagen**

Konferanse for Kommunal- og regionaldepartementet.  
Arrangert av Partnerforum, Oslo 23.1.2003  
Paper: Minoritetskvinner og politisk innflytelse

Seminar.  
Arrangert av Innvandringsavdelingen, Kommunal- og regionaldepartementet, Oslo 11.3.2003  
Paper: Minoritetskvinner og politisk innflytelse

Kjønnsmakt i Norden.  
Forskningskonferanse ved Universitetet i Oslo, Oslo 12.–13.6.2003  
Paper: Minoritetskvinner og politisk innflytelse

**Schmidt, Lene**

Idrett seminar.  
Arrangert av NIBR, Oslo 13.2.2003  
Paper: Fysisk aktivitet i skole og SFO

KBL boligkonferanse.  
Arrangert av Kommunale boligadministrasjoners landsråd, Sarpsborg 21.–22.5.2003  
Paper: Det gode bomiljø

Konferanse om kvalitet i de bygde omgivelser.  
Arrangert av Husbanken, Oslo 18.6.2003  
Paper: BOLIG+ : byboliger med nogo attåt, fleksible boliger med servicetilbud og fellesanlegg

Boliger for eldre.  
Arrangert av Time kommune, Bryne 18.8.2003  
Paper: BOLIG+, boliger med service og fellesanlegg

Konferanse om idrett, inklusjon og modernisering.  
Arrangert av Norges forskningsråd, Idrettsprogrammet, Oslo 27.–28.11.2003  
Paper: Barn og fysisk aktivitet i skole og nærmiljø

**Stigen, Inger Marie**

Seminar om kommuner i omstilling.  
Arrangert av Arendal kommune, Arendal 27.5.2003  
Paper: Flat struktur i kommunene – erfaringer og utfordringer

**Stokke, Knut Bjørn**

Fra Morsa-prosjektet til EUs vanddirektiv.  
Seminar arrangert av Morsa-prosjektet, Hankø 14.–15.10.2003  
Paper 1: Partnerskap i miljøforvaltningen – noen faglige refleksjoner og foreløpige funn knyttet til Morsa



Paper 2: Framtidig samarbeid mellom forvaltningsaktører og medvirkning fra publikum (NGOere) i Morsa i lys av EUs vanddirektiv

#### **Strand, Arvid**

Seminar om bærekraftig utvikling.  
Arrangert av NIBR, Sundvollen 20.3.2003  
Paper: NIBR - et bærekraftig institutt? For en bærekraftig utvikling?

KBL boligkonferanse.

Arrangert av Kommunale boligadministrasjoners landsråd, Sarpsborg 21.-22.5.2003  
Paper: Kommunal boligpolitikk - fragmentert og reaktiv

#### **Sverdrup, Sidsel**

Seminar om forskningsmessig evaluering av Opptappingsplanen for psykisk helse.  
Arrangert av Norges forskningsråd, Holmen, Asker 12.-13.6.2003  
Paper: Befolkningens holdninger til og kunnskap om psykisk helse og psykiske lidelser

#### **Sørli, Kjell**

Seminar om distriktenes framtid.  
Arrangert av Distriktskommisjonen (regjeringsutvalg), Molde 14.5.2003  
Paper: Bosettingspreferanser, flyttemotiver og flytteprosesser

#### **Tennøy, Aud**

Vann i by: utfordringer og muligheter for veg og VA: NIF-kurs.  
Arrangert av Norske Sivilingeniørers Forening, Stavanger 16.6.2003  
Paper: Flom i by - plan- og bygningsloven og arealplanlegging som virkemidler for å redusere flom og flomskader

Planlegging på sentralt og regionalt nivå.

Arrangert av Norges landbrukshøgskole, Ås 26.9.2003  
Paper: Samordnet areal- og transportplanlegging

#### **Vabo, Signy Irene**

Seminar om kommunal organisering.  
Arrangert av et ad hoc organisasjonsendringsutvalg i Oppegård kommune, Kolbotn, Oppegård 17.2.2003  
Paper: Om funksjonsmodell og komitémodell

Seminar om kommuneloven - 10 år etter.

Arrangert av Kommunal- og regionaldepartementet, Oslo 2003  
Paper: De folkevalgte i kommunene - hvilke roller kan de ha?

Kommunal organisering.

Arrangert av kommunestyret i Oppegård kommune, Kolbotn, Oppegård 12.3.2003  
Paper: Om alternative politiske styringsmodeller

Etterutdanningskonferanse.

Arrangert av Norsk Statsvitenskapelig Forening, Soria Moria, Oslo 6.3.2003  
Paper: Den nye kommunen og velferdsstaten

## Projects, project managers and clients

### The regional research group

#### **Adaptation to labour supply in farm households**

Bjørnsen, Hild-Marte  
Research Council of Norway

#### **Strategic decisions by Norwegian farming households**

Bjørnsen, Hild-Marte  
Research Council of Norway

#### **Comparative Study of Norwegian and Swedish Regional Policies**

Foss, Olaf  
Research Council of Norway

#### **OECD territorial database**

Foss, Olaf  
Ministry of Local Government and Regional Development

#### **Territorial patterns and implications of socio-economic change in the Nordic peripheries**

Foss, Olaf  
Nordregio

#### **The spatial effects of demographic trends and migration**

Foss, Olaf  
Swedish Institute for Growth Policy Studies

#### **The Role, Specific Situation and Potentials of Urban Areas as Nodes in a Polycentric Development**

Foss, Olaf  
Ministry of the Interior, Luxembourg

#### **ESPON - contact point**

Foss, Olaf  
Ministry of Local Government and Regional Development





**Value creation in inland areas**

Johnstad, Tom  
Morgenlandet AS

**BAS Regions, Nordland County**

Juvkam, Dag  
Nordland County Council

**Value Creation Potential of Cultural Monuments and Cultural Environments**

Kann, Frode  
The Environmental Research Alliance of Norway

**Cities – Arenas of Knowledge-rich Capital**

Langeland, Ove  
Research Council of Norway

**Nordic innovation**

Langeland, Ove  
University of Lund

**Incentive Schemes and Organizational Effects**

Langeland, Ove  
FAFO Institute for Applied Science

**Planning and Building Act – An Evaluation**

Langeland, Ove  
Research Council of Norway

**Nursing and Care Service Indicators**

Langeland, Ove  
Oslo City Council

**Kjensvatn Power Station (Panda Model)**

Moen, Bjørn  
Statkraft

**Regional Development – Research Leader**

Onsager, Knut  
Research Council of Norway

**South East Norway – An Area Study**

Onsager, Knut  
Research Council of Norway

**Collective project, Universal Data and Analysis Project**

Onsager, Knut  
Research Council of Norway

**Norwegian Cities – Local Branches**

**Replacing Head Offices?**  
Onsager, Knut  
Research Council of Norway

**Regional Development, forthcoming book**

Onsager, Knut  
Research Council of Norway

**Østfold – An Area Study**

Onsager, Knut  
Ministry of Local Government and Regional Development

**Clusters and Innovations**

Onsager, Knut  
Research Council of Norway

**Cluster Perspective in Regional and Rural Policy**

Onsager, Knut  
Ministry of Local Government and Regional Development

**Multifunctionality in the Agricultural Sector**

Orderud, Geir Inge  
Research Council of Norway

**Impact of Climate Change on Regional Economies**

Orderud, Geir Inge  
Research Council of Norway

**Housing Development in Urban Regions**

Orderud, Geir Inge  
Research Council of Norway

**European harmonised procedures for quantification of nutrient losses from diffuse sources (Euroharp)**

Orderud, Geir Inge  
Norwegian Institute for Water Research/EU

**Kvarken-Midtskandia**

Skålnes, Sigrid  
Nordregio

**Sami Parliament's System of Administration – An Evaluation**

Skålnes, Sigrid  
Ministry of the Environment

**Local Elections, Municipality of Nittedal**

Skålnes, Sigrid  
Ministry of Local Government and Regional Development

**Interreg IIIA Nordic Countries**

Skålnes, Sigrid  
NUTEK – Swedish Business Development Agency

**Interreg IIIB North Sea Region Programme – A Mid-term Evaluation**

Skålnes, Sigrid  
ECORYS – NEI, Netherlands

**Demographics and migration in Møre og Romsdal**

Sørli, Kjetil  
Møre og Romsdal County Council

**Repatriation Migration**

Sørli, Kjetil  
Research Council of Norway

**Population Indicators**

Sørli, Kjetil  
Troms County Council

**Migration – Current State of Knowledge**

Sørli, Kjetil  
Research Council of Norway

**Sub-county Plan for Business, Service and Centre Developments, Buskerud County**

Vanberg, Vidar  
Buskerud County Council

**Vestfold Sub-county Plan**

Vanberg, Vidar  
Vestfold County Council

**Kongsberg – A Place Analysis**

Vanberg, Vidar  
Municipality of Kongsberg

**The democracy and governance research group**

**User Participation and Co-determination. Evaluation of the Competence Building Plan's Focus on Users**  
Helgesen, Marit  
Research Council of Norway

**Competence Building Plan's Effect on Competence in the Mental Healthcare Sector**

Helgesen, Marit  
Research Council of Norway

**Parental Reasons for Choosing Private Schools**

Helgesen, Marit  
Ministry of Education and Research

**Public Planning, Sustainable Management and Nature-based Businesses**

Hovik, Sissel  
Research Council of Norway

**Planning and Conservation of Coastal Waters**

Hovik, Sissel  
Research Council of Norway

**Implications and Impact of Reforming Municipal Structure**

Hovik, Sissel  
Norwegian Association of Local Authorities

**Regional Coastal Zone Planning**

Hovik, Sissel  
Research Council of Norway

**Watershed oriented management of large rivers**

Hovik, Sissel  
Research Council of Norway

**Comparative Nordic City District Project**

Klausen, Jan Erling  
University of Gothenburg

**Participation, Leadership and Urban Sustainability**

Klausen, Jan Erling  
University of Bristol

**Local Government Monitoring by the State**

Klausen, Jan Erling  
Ministry of Local Government and Regional Development

**Communication between the Public and Politicians in Connection with Referendums**

Klausen, Jan Erling  
Ministry of Local Government and Regional Development



**The Dialogue between Local Authorities and Regional Offices of Central Government Departments**  
Klausen, Jan Erling  
Ministry of Local Government and Regional Development

**Welfare State Appeal Bodies – How Fair Are They?**  
Lorentzen, Hilde  
Research Council of Norway

**Democracy and Governance – Aid Agreements**  
Lorentzen, Hilde  
Research Council of Norway

**Organisational Effects of Local Authorities' Work with the National Competence-building Plan for Mental Health**  
Myrvold, Trine Monica  
Research Council of Norway

**City of Bergen, Government Model**  
Myrvold, Trine Monica  
Rokkan Centre

**Living Local Democracy: The Dialogue between Elected Representatives and the Public**  
Myrvold, Trine Monica  
Norwegian Association of Local Authorities

**Political Involvement and Organization in Multicultural Norway**  
Predelli, Line Nyhagen  
Research Council of Norway

**Evaluation of State Ownership and Business Enterprise Model**  
Stigen, Inger Marie  
Ministry of Health and Social Affairs

**Flat Structure and Profit Centres – Challenges in Council Leadership**  
Stigen, Inger Marie  
Norwegian Association of Local Authorities

**County Council Parliamentarism – Nordland Council**  
Stigen, Inger Marie  
Bodo University College

**Central Government's Use of Consultants**  
Stigen, Inger Marie  
Office of the Auditor General

**ICT and Local Democracy**  
Stigen, Inger Marie  
Research Council of Norway

**Organization Database**  
Vabo, Signy Irene  
Ministry of Local Government and Regional Development

**Evaluation of the 'Model Municipality' Pilot Scheme**  
Vabo, Signy Irene  
Ministry of Local Government and Regional Development

**New Organizational Models for Local and Central Government**  
Vabo, Signy Irene  
Research Council of Norway

**The welfare and living conditions research group Formative Process Research, Moneragala Integrated Rural Development Programme (MONDEP)**  
Baklien, Bergljot  
NORAD – Norwegian Agency for Development Cooperation

**Reference Group – Research Evaluations**  
Baklien, Bergljot  
Norwegian Board of Education

**Alcohol and Poverty in Sri Lanka**  
Baklien, Bergljot  
FORUT – Solidarity Action for Development

**Valuation Report, Norwegian Board of Education**  
Baklien, Bergljot  
Norwegian Board of Education

**Formative Process Research – Concepts, Methodological Approach and Experience**  
Baklien, Bergljot  
NORAD – Norwegian Agency for Development Cooperation

**Dropping Out of Further Education**  
Baklien, Bergljot  
Norwegian Board of Education

**Consumer Preferences and Product Range**  
Bratt, Christopher  
Research Council of Norway

**Public and Private Responsibilities for Welfare**  
Bratt, Christopher  
Norwegian Association of Local Authorities

**Study of Young Adults in Drammen**  
Bratt, Christopher  
Drammen City Council

**Challenges for Local Authorities in Elderly Care**  
Brevik, Ivar  
Norwegian Association of Local Authorities

**Housing Preferences 50+ in Asker**  
Brevik, Ivar  
Municipality of Asker

**Action Research – Racism**  
Carlsson, Yngve  
Ministry of Children and Family Affairs

**Racism and Discrimination in Nedre Eiker**  
Carlsson, Yngve  
Municipality of Nedre Eiker

**Physical Activity, Local Roots and Social Integration**  
Carlsson, Yngve  
Ministry of Culture and Church Affairs

**Gateakademiet Kristiansand – Street Academy Kristiansand**  
Carlsson, Yngve  
Kristiansand City Council

**Furuset Close Up**  
Carlsson, Yngve  
Ministry of Children and Family Affairs  
Ministry of Justice  
Oslo City Council

**Partner Violence in Norway – A Prevalence Study**  
Clausen, Sten-Erik  
Research Council of Norway

**Children's Living Conditions and Marginalization**  
Clausen, Sten-Erik  
Research Council of Norway

**Local Child-care Initiatives**  
Feiring, Marte  
Oslo City Council, Department for Hospitals and Specialized Healthcare

**Evaluation of Centre Against Ethnic Discrimination**  
Gotaas, Nora  
Ministry of Local Government and Regional Development

**Evaluation of the 'Bridge-building Project'**  
Gotaas, Nora  
Workshop of Primary Healthcare

**Evaluation of the 'Music in Prison and Freedom' Project**  
Gotaas, Nora  
Council for Music Organizations in Norway

**The Situation of Social Welfare Recipients According to the Event-history Database**  
Haaland, Thomas  
Oslo City Council, Welfare and Social Services Department





**Youth Study – Municipality of Skedsmo**  
Haaland, Thomas  
Municipality of Skedsmo

**Children at Risk and Flexible Assistance Arrangements**  
Kristofersen, Lars B.  
Research Council of Norway

**Buskerud County Child Protection Authority**  
Kristofersen, Lars B.  
Buskerud County Council

**Alternatives to Orphanages in Northwest Russia**  
Kristofersen, Lars B.  
Nordic Council of Ministers

**Welfare Society and Youth Gangs – A Study of Four Cities**  
Lien, Inger-Lise  
Research Council of Norway  
Kristiansand City Council  
Norwegian Institute of International Affairs

**Pakistani democracy**  
Lien, Inger-Lise  
Norwegian Association of Local Authorities

**The role of ethnic networks in preventing gang criminality**  
Lien, Inger-Lise  
Ministry of Local Government and Regional Development  
Norwegian Directorate of Immigration

**Public Attitudes Towards and Knowledge of Mental Health and Psychiatric Disorders**  
Sverdrup, Sidsel  
Research Council of Norway

**User Involvement – Ideals and Reality**  
Sverdrup, Sidsel  
Research Council of Norway

**Teachers and Pupils in Front of the Computer Monitor – New Forms of Interaction?**  
Vestby, Guri Mette  
University of Oslo

**Information and Communication Technology in Oslo's East End**  
Vestby, Guri Mette  
University of Oslo

**Area Development Process, Skotterud**  
Vestby, Guri Mette  
Hedmark County Council

**Panel of Experts, Council of Europe**  
Vestby, Guri Mette  
Ministry of Children and Family Affairs

## The environmental planning research group

**Coastal Zone Plan, Hambantota**  
Arnesen, Odd Eirik  
Norwegian Institute for Water Research

**Institutional Analysis Ethiopia**  
Arnesen, Odd Eirik  
World Bank

**Business Experience Exchange Programme**  
Arnesen, Odd Eirik  
Royal Norwegian Society for Rural Development

**Management of Setesdal Landscape Conservation Area by Local Authorities**  
Falleth, Eva Irene  
Directorate for Nature Management

**Spatial Planning as a Strategy for Sustainable Development**  
Falleth, Eva Irene  
Research Council of Norway

**Farmland Protection and Urban Development in Norway**  
Falleth, Eva Irene  
Research Council of Norway

**Sports in Schools and After-school Care**  
Guttu, Jon  
Research Council of Norway

**Living Customs of Ethnic Minorities**  
Guttu, Jon  
Oslo Housing and Urban Planning Association

**Nordic Experiences of Strategic Environmental Assessments**  
Hanssen, Martin A.  
Nordregio

**Evaluating the Alternatives in EIAs**  
Hanssen, Martin A.  
NOPEF

**Civil Service Training Opportunities**  
Hanssen, Martin A.  
Ministry of the Environment

**Sustainable Urban Development**  
Nenseth, Vibeke  
Research Council of Norway

**Power and Planning – Use of Sports Grounds**  
Nenseth, Vibeke  
Research Council of Norway

**MI Theme Day**  
Nenseth, Vibeke  
The Environmental Research Alliance of Norway

**Nordic Urban Policy Initiatives**  
Nenseth, Vibeke  
Danish Building Research Institute

**Ethics and Urban Planning**  
Ploger, John  
Research Council of Norway

**Culture Follow-up Programme**  
Ploger, John  
Directorate of Public Construction and Property

**The Electronic City**  
Røe, Per Gunnar  
Research Council of Norway

**Landscapes Under Pressure**  
Skogheim, Ragnhild  
Norwegian Institute of Cultural Heritage Research

**Building Regulations Newsletter**  
Schmidt, Lene  
Norwegian Building Research Institute

**Housing+ – A Brochure**  
Schmidt, Lene  
Norwegian State Housing Bank

**Study Trip Housing+**  
Schmidt, Lene  
Norwegian State Housing Bank

**Putting a Value on Recreation Areas**  
Skogheim, Ragnhild  
Research Council of Norway

**Water Systems Management Interreg**  
Stokke, Knut Bjørn  
Norwegian Institute for Water Research

**Municipal Planning and Accessibility for the Disabled**  
Stokke, Knut Bjørn  
Ministry of the Environment

**Consulting Firms and Urban Planning**  
Strand, Arvid  
Research Council of Norway

**Cultural Heritage and its Management**  
Strand, Arvid  
Ministry of the Environment

**European Spatial Development Perspective**  
Strand, Arvid  
Ministry of the Environment

**Planning in Nordland County**  
Strand, Arvid  
County governor of Nordland

**National Farmland Protection Guidelines**  
Strand, Arvid  
Research Council of Norway

**Training Programme Home and Health – An Evaluation**  
Tennøy, Aud  
National Office of Building Technology and Administration



## The environment and development research group

### Fisheries adaptation and marine resource management under impact of economic reform

Aasen, Berit  
Research Council of Norway

### Strategy Document – Fishery Cooperation Vietnam

Aasen, Berit  
NORAD – Norwegian Agency for Development Cooperation

### Reference Group for Norwegian Trust Fund for Environmentally and Socially Sustainable Development (NTFESSD)

Aasen, Berit  
Ministry of Foreign Affairs

### Knowledge Base of Fisheries Management

Aasen, Berit  
Danish Institute of Fisheries Management and Coastal Community Development / EU

### Review and Appraisal of Asian Institute of Technology

Aasen, Berit  
NORAD – Norwegian Agency for Development Cooperation

### Decentralising Ethiopia

Aasen, Berit  
NORAD – Norwegian Agency for Development Cooperation

### Conflict-solving Assistance, Eritrea

Aasen, Berit  
NORAD – Norwegian Agency for Development Cooperation

### Ninh Binh – Concluding Evaluation

Aasen, Berit  
NORAD – Norwegian Agency for Development Cooperation

### Work of Norwegian NGOs

Aasen, Berit  
Ministry of Foreign Affairs

### HIV/AIDS and Decentralisation

Aasen, Berit  
NORAD – Norwegian Agency for Development Cooperation

### Assessment of Annual Meeting Documentation of Sekong Ethnic People's Development Project

Aasen, Berit  
NORAD – Norwegian Agency for Development Cooperation

### Building Capacity for Development Research at the Research Centre for Applied Geography

Aasen, Berit  
NORAD – Norwegian Agency for Development Cooperation

### Desk Pre-appraisal – Phase II Fisheries Act

Aasen, Berit  
NORAD – Norwegian Agency for Development Cooperation

### R&D Review, Vietnamese Fisheries Sector

Aasen, Berit  
NORAD – Norwegian Agency for Development Cooperation

### Vietnam's System of Governance

Aasen, Berit  
NORAD – Norwegian Agency for Development Cooperation

### Local Politics and Development

Aasen, Berit  
University of Oslo

### Agricultural Production, Organisation and Marketing in Sri Lanka Horticultural Sector

Arnesen, Odd Eirik  
Royal Norwegian Embassy, Colombo

### Changes in Local Governance

Braathen, Einar  
NORAD – Norwegian Agency for Development Cooperation

### Citizens and Local Elections

Braathen, Einar  
NORAD – Norwegian Agency for Development Cooperation

### NGO Bargaining Power at the Municipal Level in South East Europe

Grødeland, Åse Berit  
Research Council of Norway

### Conditionality, Corruption and Informal networks: An analysis of corruption in the spheres of public procurement, party funding, lobbying and the judiciary in the Czech Republic, Slovenia, Bulgaria and Romania

Grødeland, Åse Berit  
Research Council of Norway

### Municipal Cooperation Norway–Bosnia

Holm-Hansen, Jørn  
Norwegian Association of Local Authorities

### Formative Process Research, Tanzania

Kleven, Terje  
Research on Poverty Alleviation, Tanzania

### Lake Victoria Vision

Kleven, Terje  
Statkraft Grøner AS

### Malawi Poverty Alleviation Sustainability Review

Schou, Arild  
University of Sussex

### Report from the Ministry of Planning and International Cooperation (MOPIC)

Schou, Arild  
NORAD – Norwegian Agency for Development Cooperation

### Environmental Collaboration with Indonesia

Tesli, Arne  
Directorate for Nature Management

### Social Capital, Local Government and Poverty Reduction

Tesli, Arne  
Research Council of Norway South Africa/Norway Programme

### Environmental Impact Assessments – Joint Strategic Institute Programme – ENVIRA

Tesli, Arne  
Research Council of Norway

### Integrating Social and Environmental Concerns in Development Programmes

Tesli, Arne  
NORAD – Norwegian Agency for Development Cooperation

### Sino-Norway Social Policy Forum

Tesli, Arne  
Research Council of Norway

### Registered Environmental Impact Assessments 1991–2001

Tesli, Arne  
Ministry of the Environment

### India Watershed Development Project

Vedeld, Trond  
FAO

### Decentralisation/education in Mali

Vedeld, Trond  
NORAD – Norwegian Agency for Development Cooperation

Edited by:  
The resource department of NIBR

Graphic design:  
LaVie Kommunikasjon AS

Photo:  
Paul Sutter  
Petter Strømsted

Translation:  
Chris Saunders

Print:  
Nordberg Trykk AS





Gaustadalléen 21  
P. O. Box 44, Blindern  
N-0313 Oslo  
Norway  
Tel +47 22 95 88 00  
Fax +47 22 60 77 74  
E-mail [nibr@nibr.no](mailto:nibr@nibr.no)  
[www.nibr.no](http://www.nibr.no)

