

Annual Report 2006



NIBR

Norwegian Institute for Urban and Regional Research

Contents

Norwegian Institute for Urban and Regional Research	3
NIBR at 40: From state institution to international market player	4
Preliminary Accounts 2006	6
Highlights of 2006	8
The Research Departments	10
Strategic Institute Programmes	12
Multidisciplinary Research	14
International Activity	16
Information and Dissemination	18
NIBR Publications	22
External Publications	24
Conferences	26
Projects	32

Edited by:
The Resource Department of NIBR

Graphic design:
Melkeveien designkontor

Photos:
Daniel Staver
Paul Sutter
Petter Strømsted

Translation:
Chris Saunders

Print:
Nordberg Trykk AS

Oslo 2007

Norwegian Institute for Urban and Regional Research

is an independent social science research centre whose mission is to develop and publish research-based insights for the benefit of decision-makers in public and private institutions as well as for the general public.

NIBR's vision is to further develop urban and regional research as an inter- and multidisciplinary field of study with a global perspective, thereby strengthening the institute's position as one of the foremost Norwegian and leading European environments for urban and regional research.

NIBR offers action-oriented, decision-support research and analyses for clients in the public and private sectors and competes for research contracts in Norway and abroad. The institute aims to be a competitive contributor to research programmes under the auspices of the Research Council of Norway as well as to international research programmes, e.g. the EU framework programmes. NIBR is an independent foundation. The achievement of the institute's research objectives requires that its operations be financially profitable. All profits are reinvested into NIBR's operations and used in accordance with the institute's objectives.

NIBR's most important competitive advantage is the ability to combine cutting edge experience across multiple fields of study and expertise.

NIBR's core competence is in urban and regional research. This is a wide inter- and multidisciplinary field of social science research, encompassing i.a.:

- analyses of social conditions and societal changes in urban and rural areas, and across regions, sectors and levels;
- analyses of regional development and innovation, planning and management, and the development of democracy and welfare within and across local communities;
- territorial analyses of society, coupled with studies of sustainable development

NIBR is one of Norway's environmental research institutes. Drawing on its competence in the social sciences, NIBR conducts studies which promote society's ability to tackle environmental and social development challenges. NIBR is a member of the Environmental Alliance, a strategic partnership with the seven leading environmental research institutions in Norway. The other members are Norwegian Institute for Cultural Heritage Research (NIKU), Norwegian Institute for Air Research (NILU), Norwegian Institute for Nature Research (NINA), Norwegian Institute for Water Research (NIVA), Bioforsk and Centre for International Climate and Environmental Research (CICERO). Associate members are Institute of Transport Economics (TØI) and Norwegian Geotechnical Institute.

Housing research at NIBR received a boost with the merger with SINTEF Building and Infrastructure. By concentrating housing research once spread among several bodies at NIBR, we stand a far better chance of addressing effectively national and international research challenges in the field of housing.

Urban and regional research is an international field of study. NIBR is actively involved in international research in the institute's target areas. This international activity has grown in the last years, especially in environmental, government, development and regional studies.

NIBR has four research departments:

- Department for International Studies in Development, Transition and Migration
- Department for Socioeconomic and Territorial Studies
- Department for Housing and Environmental Planning Research
- Department for Welfare, Democracy and Governance Research

In autumn 2006, NIBR moved into newly opened offices at the *Oslo Centre for Interdisciplinary Environmental and Social Research* (CIENS). CIENS is a strategic research collaboration between independent research institutes and the University of Oslo. The centre is built on a shared scientific strategy and research program (Strategies and Actions for Common REsearch – SACRE), co-operation on research and information projects, and the consolidation of about 500 researchers under a single roof in new and environmentally sound offices in the Oslo Innovation Center.



NIBR at 40: From state institution to international market player

2006 marked an important milestone in NIBR's history. Following a long-drawn-out process and hard work by the whole organisation, NIBR moved in October to the newly launched Oslo Centre for Interdisciplinary Environmental and Social Research (CIENS), at Gaustadbekkdalen in Oslo. Now as part of a large, wide-ranging cross and multidisciplinary research establishment, NIBR is once more to be found in the Oslo Innovation Center at Blindern. Moreover, together with three of the other institutes, we actually own our own office space. Working conditions are more streamlined and predictable than ever before in the history of the institution.

As a CIENS partner, NIBR is one of a multidisciplinary team whose expertise ranges, on the one hand, from the social to the environmental sciences, and, on the other, from basic to applied research. This partnership in the development and inauguration of the CIENS complex came about as a response to challenges facing applied research organisations like NIBR. Research standards and delivery need to satisfy increasingly stringent criteria, both at home and in the wider world, requiring a high degree of flexibility and ability for working across professional and scientific boundaries. The CIENS complex finds its justification in the challenges posed by the environment and sustainable development. This is an area of research to which NIBR's multidisciplinary expertise, integrated approach and understanding of the issues at stake and the means to deal with them, can make a significant contribution.

In 2007, NIBR celebrates its fortieth anniversary. It allows us to reflect on the move to CIENS in a historical perspective. Officially, NIBR came into being on July 1, 1967. It was organised as a state institute under the then Norwegian Council for Scientific and Industrial Research (NTNF). Set up as a specialist research body, it was tasked with delivering research of relevance to urban and regional planning at a time when planning was conceived as a means of forming, or “designing”, society. Characteristically, NIBR, like most of the unaffiliated research institutes (the “non-university institute sector”) established then, was a state institution, and enjoyed substantial state funding. Nation-building and social problems should be addressed in a planned, coherent manner. And that required facts and figures. NIBR was set up to generate and deliver policy-relevant data to aid the building of the Norwegian nation in regional concord, with town and country growing and prospering side by side under planned state sponsorship!

But faith in planning as a means of achieving the ideal society withered before the realities of market orientation and internationalisation. The past forty years of NIBR's existence could be summarised as a process from *planning to market*. The market has gradually become the framework within which society is governed. And this has changed the role of knowledge and research. Once seen as an instrument of “good” decision-making, knowledge and research have had to adapt to survive in a competitive market. By 1986, with the government's decision to “release” research institutes from bondage to the state, NIBR (and many other research institutions) ceased being a purveyor of information “by appointment to the government” and became an autonomous foundation.

The latter half of NIBR's forty-year history has been about developing the institute as an independent player in a national and international market for research-based knowledge and competence. It has required a considerable investment in adapting and building the organisation, along with an ability to formulate competitive applications and project proposals. It has also required robust standards of research, able to withstand the critical scrutiny of fellow scientists while remaining relevant for users and clients.

As society has grown increasingly receptive to ideas from the outside in step with dependence on the international system, research has had to reach out to the international community to stay competitive. This is vital not least for research on the environment and sustainable development. Like other “goods”, research and research-based knowledge flow freely between countries and across national borders. NIBR's forty-year history is therefore also a history of growing internationalisation and evolution from national purveyor of know-how to competitive player in an open international market for knowledge.



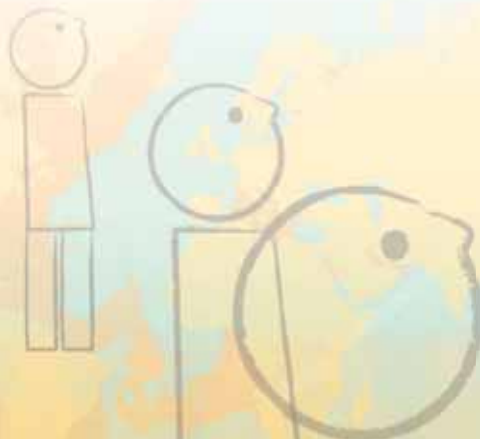
Jon Naustdalslid
Director General

But there is consistency too: NIBR has always been an institute of applied research. This has to do with its general cross-disciplinary – or multidisciplinary – organisation. Generating knowledge on social problems cannot be held in check by narrow academic, scientific and professional boundaries. NIBR has consistently addressed themes and issues pertaining to land use, environment, resources and our physical surroundings. Cross-disciplinary collaboration involving the social and physical sciences and technology has been not only necessary, but highly relevant.

As NIBR stands at the threshold of a new decade, its new CIENS location represents a milestone in its forty-year history, and a unique opportunity to strengthen cross-disciplinary and multidisciplinary collaboration with the other scientific bodies at CIENS: TØI, NIVA, NINA, CICERO and NILU, in addition to Meteorological Institute and departments at the University of Oslo involved in climate and environmental studies. The broad contact with the University of Oslo will also enhance the possibilities of cooperation with the social science institutes of the university. NIBR will be focusing on expanding this area of research collaboration. Many of the research-related challenges facing NIBR in the foreseeable future will require an ability and capacity to offer comprehensive, cross-disciplinary solutions. Participation in CIENS will sharpen NIBR's competitive edge.

A dynamic and professional workforce will be increasingly important to international competitiveness. CIENS has what it takes to grow into an international powerhouse. There is also competition in today's market to attract the best researchers. NIBR's new offices at CIENS, strategically located next door to the university campus at Blindern and within Norway's largest cluster of knowledge institutions, are also likely to benefit the institution in the contest for the best researchers.

I would like to welcome partners, colleagues and clients to NIBR as it celebrates its fortieth birthday and inaugurates a new epoch in the institute's history in new, progressive offices at CIENS. Of one thing I am in no doubt: it is a scientifically robust and dynamic Norwegian Institute for Urban and Regional Research that will be moving ahead into the new decade.



PRELIMINARY* ACCOUNTS 2006. Excerpts

All figures in NOK 1 000

OPERATING INCOME	2006	2005
Income from commissioned projects	31 575	25 401
Founding of research programmes	14 263	16 025
Annual basic allocations	11 567	11 655
National tasks	1 230	1 230
Sale of publications	198	254
Other operating income	505	21
TOTAL OPERATING INCOME	59 338	54 585
OPERATING EXPENSES		
Salary, wages and social security expenses	42 162	35 917
Expenses directly related to projects	8 998	9 819
Expenses relating to premises	3 088	1 846
Depreciation	526	735
Expenses related to information	487	683
Other operating expenses	2 577	2 885
TOTAL OPERATING EXPENSES	57 838	51 886
OPERATING PROFIT	1 500	2 699
Profits financial items	260	235
NET PROFIT FOR THE YEAR	1 760	2 934

BALANCE SHEET as of 31.12.2006

ASSETS	2006	2005
Fixed assets	13 227	2 370
Prepaid pension		305
Current assets	30 957	36 663
TOTAL ASSETS	44 184	39 338
EQUITY AND LIABILITIES		
Issued equity	5 000	5 000
Accumulated equity	18 853	17 092
Pension liabilities	1 061	
Current liabilities	19 270	17 245
TOTAL EQUITY AND LIABILITIES	44 184	39 338

* The annual accounts will be published separately.

FORMAL COMPETENCE

	2004		2005		2006	
Total number of staff	69		68		75	
Research staff	57		56		63	
Research/person-years	53,9		52,8		56,4	
Research staff, PhD qualifications	20	35 %	19	34 %	23	37 %
Research staff, grade 1	10	18 %	10	18 %	13	21 %

PUBLICATIONS AND OTHER ACADEMIC ACTIVITIES

	2004		2005		2006	
Articles in academic journals with referee / per researcher	19	0,34	14	0,22	12	0,19
Articles in other professional journals / per researcher	41	0,73	14	0,22	10	0,16
Books and anthologies	36		37		32	
Cronicles and reviews	15		29		26	
NIBR Reports	24		18		20	
NIBR Working Papers	34		39		38	
Papers prepared for academic conferences and seminars	39		58		45	

**REVENUES BY SOURCE
(ALL FIGURES IN NOK 1 000)**

	2004		2005		2006	
Annual basic allocation from the Research Council of Norway (NFR)	6 438	12 %	6 383	12 %	6 286	12 %
Strategic Institute Programmes from NFR	3 976	7 %	4 572	9 %	5 281	10 %
Research programs from NFR	16 866	31 %	13 264	25 %	9 314	18 %
University and college collaboration	1 991	4 %	1 390	3 %	189	0 %
Ministries and other government bodies	18 910	35 %	19 010	36 %	22 409	43 %
Counties and municipalities	3 433	6 %	3 122	6 %	3 988	8 %
International funding	4 391	8 %	5 778	11 %	4 578	9 %
Private sources and other operating revenues	1 462	3 %	1 065	2 %	591	1 %
TOTAL REVENUE	57 467		54 584		52 636	
Revenue per researcher	1 066		1 034		933	
Basic allocation per researcher	183		196		184	



Highlights of 2006

Motorised Traffic on Uncultivated Land

Recent years have seen a dramatic rise in the prevalence of motor vehicles used for off-road driving. While some of this activity is related to farming, forestry and reindeer husbandry, some represents recreational driving and enjoyment. The increasingly popular snowmobile, when driven cross-country, comes into conflict with the traditional conception of nature as a source of “peace and quiet”. All-terrain vehicles (ATVs) are responsible for damage to land and undergrowth, particularly in Finnmark. The tourist industry and other economic interests want to see wider permits for off-road driving to promote tourism, and as a form of recreation for the general public. Local councils vary in their response to exemption applications under the Motor Traffic Act. Some even flagrantly contravene the spirit of the law.

NIBR conducted a project on behalf of the Directorate for Nature Management. “Motorised Traffic and Society” (MoSa) which went to the heart of the many political and administrative challenges in the regulation of off-road traffic. It was not a research project in the conventional sense. Of central importance to the project’s execution was an *advisory group*, which acted as a lens and forum for discussions of user and interest representations in relation both to an assessment of research-based information on prevalence and effects of off-road driving, and to reveal and outline the many conflicts of interest awakened by legislation. The two reports from the project – on *knowledge status and basic principles/values* respectively – will feed into the Directorate’s revision of the Motor Traffic Act of 1997.

Regulation is a hotly disputed issue, with many voices and conflicting opinions about extent and scale. This has coloured the advisory group’s conclusions. Despite a general consensus on current status and the effects of off-road driving on the countryside and to society, views on the *purpose* of an amended law differ widely.

While the revision’s objectives and values are disputed on the basis of principle, there is consensus on the need to regulate off-road driving through municipal motor traffic plans under the terms of the Planning and Building Act, and that certain aspects of current management, rules and regulations need revising to achieve a more consistent interpretation of the law and management practices throughout the country.

Project Leader at NIBR: Senior Researcher Terje Kleven.

Corruption Studies at NIBR

NIBR recently completed a project on Informality, Corruption, Public Procurement and EU Conditionality in the Czech Republic, Slovenia, Bulgaria and Romania (2003–06) and has just started a similar study in Serbia, Bosnia-Herzegovina and Macedonia (2006–09). The projects, both of which are funded by the Research Council of Norway, explore four areas of civil society where corruption is considered especially likely to take hold: political party financing; lobbying; the judicial system; and public procurement. The Balkan project also takes in post-conflict rebuilding/regeneration. NIBR is involved in an international study of the Ukraine – *The (Re-)Integration of the Ukraine into Europe*, (2006–09) – which adopts a similar approach. Lead partner is the University of Vienna.

Data are obtained through in-depth interviews and quota-based opinion polls of elected representatives and representatives of political parties, the judiciary, government, media, NGOs, local and foreign businesses, anti-corruption authorities, EU, Council of Europe (EU applicant countries) and international donors (West Balkans). A comprehensive analysis will be conducted as soon as the data from the three projects and participating countries are available.

Data from EU applicant countries show that informal relations in the form of contacts and informal networks proliferate in all four countries and that such relations encourage corruption. The negative corollaries of informality – including corruption – are however much more widespread in Bulgaria and Romania than in the Czech Republic and Slovenia. Informal networks are considered to be the outcome of national cultures, communism and transition in almost equal measure. Czechs and Romanians are more likely to blame communism than Slovenes and Bulgarians. There is consensus among respondents from all four countries that the negative aspects of informal networks should be addressed first and foremost by changing entrenched ways of thinking.

Project Leader at NIBR: Senior Researcher Åse Grødeland.

Territorial Impacts of European Fisheries Policy

NIBR was lead partner in a study of the *Territorial Impacts of European Fisheries Policy*, an international project with Iceland, Estonia, Denmark, Italy, Portugal and Spain. Funded under the EU Structural Fund programme European Spatial Planning Observation Network (ESPON), its purpose was to strengthen the knowledge of territorial cohesion through an analysis of territorial impacts of the Common Fisheries Policy (CFP).

As a sector policy, CFP affects, among other things, employment, cohesion and economic growth in coastal regions. Fishing and aquaculture sub-sectors have undergone profound change in recent years. The main aim has been to strengthen the competitiveness of the sectors and to ensure their sustainability. A number of measures have been introduced to conserve fish stocks: reduction in quotas, reduction in the fishing fleet, limitation on how, when and where fishing can take place. All this will affect employment, demographics, regional growth and sustainability, and are in this project studied at different geographical levels.

The results show that the consequences of fisheries policy depend on factors peculiar to the different regions, not least the geographical level at which the effects are measured. Employment in the fishing industry has fallen everywhere in Europe, with a number of fishery-intensive coastal regions experiencing dramatic levels of job losses and depopulation. Despite a smaller European fishing fleet, fish stocks are still being overtaxed. Aquaculture is a growing industry economically and as an employer, but its adverse environmental effects and the need to balance economic and other interests in coastal regions remain important challenges. CFP is enacted differently in different countries; there is therefore a need to harmonize EU sector policy for fisheries with territorial policy to promote territorial cohesion. The results of the project are available at www.espon.eu.

Project Leader at NIBR: Senior Researcher
Ove Langeland.

The Research Departments

Department for Housing and Environmental Planning Research

Work at the department stems from studies of the Norwegian planning system and includes the Centre of Planning and Environmental Impact Assessment. In 2006, the section at NBI/SINTEF Building and Infrastructure devoted to housing studies were relocated under NIBR's new Department of Housing and Environmental Planning Research. The department focuses on these core research areas:

Environmental Planning Research

The department has built up a solid repertory of expertise in planning processes and the Planning and Building Act as a planning and management tool. It covers methodological development; studies of the regulatory effectiveness of the planning system and challenges related to decision making processes, participation and democracy. The department also engages in analyses of land and resource management and nature-based business development.

Housing Research

Under this heading we study the workings of the housing and property market, and the connection between housing policy and the social and economic integration of vulnerable segments of society. Housing policy mechanisms are studied, and we evaluate and study the small, but important rental sector in Norwegian municipalities. Other areas of importance relate to the implementation of political targets in areas such as universal design and environmental building standards. We are also engaged in studies of sustainable housing and the connection between life style and housing consumption.

Urban Development and Place Research

Place research at NIBR ranges across the social, cultural and economic conditions of life in specific locations. We bring knowledge of physical design/layout, economic growth and cultural planning to bear in studies of conservation/preservation, development and use of land and places. Our portfolio includes in addition studies of place development and image building for small communities, small towns and city suburbs. In recent years, our expertise in these fields has benefited the study of shrinking towns.

Dr. ing. Berit Nordahl is Research Director.



Department for Welfare, Democracy and Governance Research

The department's main focus is the public sector, its organisation and management, and how this affects political participation, governance, policy making and division of responsibilities and tasks. These research interests are pursued in a number of policy areas, not least health and welfare, environment, housing and education.

The department addresses scientific challenges of studying politics, political processes and political debates. Our aim is to bring scientific perspectives to bear on political issues in ways that advance practical knowledge and scientific understanding. The department's research projects cover all stages of policy making and policy enactment. Empirical and normative analyses are staple methodologies. One area of great importance concerns political systems and the democratic challenges facing them. We also study problems stemming from and affecting different levels of government using qualitative and quantitative research methods.



The department studies questions associated with the organisation and management of the public sector. We aim here to establish the impact of public sector organisation and management on

- Political participation
- Governance
- Policy making
- Division of responsibilities and tasks

Dr. polit. Hilde Lorentzen is Research Director.

Department for International Studies in Development, Transition and Migration

The Department for International Studies in Development, Transition and Migration (DTM) studies politics and governance in countries experiencing large-scale socio-economic change and transition. Key topics for research include decentralisation processes and political participation, administrative reform and socio-economic changes, environment and resource management.

The researchers have long and comprehensive experience from research activities in a number of countries in Sub-Saharan Africa, South and South-East Asia, East and South-East Europe, Former Soviet Union states – as well as in other regions of the world.

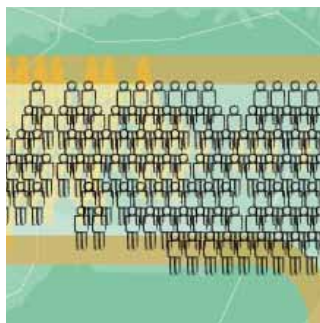
The international department constitutes a group of researchers within NIBR's larger environment of scientific expertise and research activity, and the DTM research to a large extent reflects the research activities carried out by NIBR's other departments. One of our ambitions is to combine the country- and scientific expertise possessed by the DTM researchers with the up-front expertise on specific research topics – discussed in a Norwegian, European or international context – of the research carried out by NIBR's other departments.



The department's researchers are mainly carrying out research under the following research areas and topics:

- Decentralisation and local government
- Research on civil society
- Poverty reduction and socio-economic development
- Mechanisms of marginalisation and exclusion
- Conflict and post-conflict situations
- Research on corruption and informal networks

Dr. polit. Arne Tesli is Research Director.



Department for Socioeconomic and Territorial Studies

The department performs commissions – studies and assessments – for clients in Norway and abroad principally of a regional nature, including the dynamics of regional growth and development, territorial issues and development in an international comparative perspective. Research on regional development and the socio-economic development of single regions concerns the interplay of political measures and factors of an economic, social, demographic and environmental nature in a territorial perspective, including innovation and learning within and between enterprises.

The department performs evaluations, perspective analyses and impact assessments of the territorial effects of social change and policies at various levels. We study welfare-related sectors, the economy and dispositions of regional and local administrations, and the economic aspects of the housing sector and housing market. We also do analyses of welfare and social policies, often with a focus on living conditions, housing and political measures for the eldest segment of the population. We study youth and the environment in which young people live and grow. Further studies highlight the interaction of nature and society. The leading concern here is climate change, its local and regional implications and the political strategies put together to address it.

Core research areas:

- Economic growth/business development, networks and innovation
- Territorial studies – integrated perspectives on regional development
- Public sector economy and local government finances
- Demography and socio-demography
- Evaluations of regional policy and regional policy collaboration
- Service, centre and place analyses
- Living conditions of different segments of the population and associated challenges
- Territorial growth in Europe and OECD countries
- Social conditions and territorial circumstances within Europe and across the world

Cand. social. Olaf Foss is Research Director.



Strategic Institute Programmes

Strategic Institute Programmes are funded under the annual basic allocation and are an important component of efforts to strengthen competence and international orientation within NIBR's priority areas. Activities include theoretical and empirical studies and comprehensive documentation of results in the form of articles, papers etc. By supporting PhD projects – generally in connection with larger commissions – the Strategic Programmes also encourage competence building at the individual level. Developing and sustaining scientific networks and collaboration nationally and internationally are also prioritised activities.

Regional and Local Effects of, and Adaptation to, Climate Change

Now in its final year, this programme entailed over the past two years four individual projects:

- *Trade in greenhouse gas emissions credits under the Kyoto Protocol: Local and regional implications.*
The project aims at strengthening knowledge and scientific understanding of the trading system in practice, the trade in emission credits and the political processes emerging in response to the trading system.
- *Municipal action on climate change* explores and analyses ongoing and planned action aimed at stemming greenhouse gas emissions and coping with projected changes.
- *Economic impacts of extreme weather – flood damage* studies the aftermath of extensive flooding in Nord-Trøndelag, autumn 2005.
- *Climate change and social justice* looks at attitudes of young adults in Norway and China on procedural and distributive justice in connection with action on climate.

Project Leader at NIBR: Senior Researcher Geir Orderud.

Public Health

The programme combines the resources of several areas of competence in the fields of welfare, planning and government studies. The programme started in 2006 and extends to 2010 and includes a study into how public health is organised at the local level, an evaluation of how well public health considerations are integrated in plans and planning, an empirical/theoretical study of how knowledge “translates” into planning as a consequence of tighter reporting criteria, along with papers on ethical and political dilemmas in preventive health work in a historical perspective. The programme will focus on planning's potentials and constraints in promoting somatic and mental health of different groups.

Project Leader at NIBR: Senior Researcher Guri Mette Vestby.

Foresight for Regional Planning and Sustainable Regional Development

Extending from 2006 to 2010, the programme seeks to strengthen our understanding of the challenges and opportunities inherent in foresight as a tool for regional innovation and sustainable regional development. “Foresight” describes forward-looking processes based on broad participation and a combination of scenario building and coordination.

The aim is to promote NIBR as a national centre of expertise of relevance for potential clients. NIBR will be co-arranging with the Research Council of Norway a comprehensive Foresight conference in 2007. International contributions will bring new knowledge and experience to interested parties in Norway. NIBR is also coordinating an application for the Seventh EU Framework Programme, in which Foresight is one of the thematic areas. The institute programme is also funding a PhD thesis on foresight.

Project Leader: Senior Researcher Jan Erling Klausen.

Strategic Block Grant from Ministry of Local Government and Regional Development

NIBR receives a strategic block grant from the Ministry of Local Government and Regional Development to support longer-term competence building in the field of regional economic models and databases, municipal organisation data, housing research, migration analyses and research dissemination. The grant is also intended to facilitate information sharing with and scientific dialogue between NIBR and the Ministry.

Joint Institute Programmes under the Environmental Alliance

Watershed oriented management of large rivers was a joint programme where NINA (lead partner), NIVA, Bioforsk and NIBR collaborated to improve and develop the knowledge base for a watershed based management of water courses in Norway. The programme ended in 2006 with a report detailing findings from all of the sub-projects.

Senior Researcher Sissel Hovik represented NIBR on the programme's steering group.

NINA heads *Nature 2020+*, a strategic institute programme involving NIBR, NIKU, CICERO, NIVA and NILU. Its objective is to conduct scenario-based foresight studies for biological and socio-cultural components for the wider Glomma watershed area. A scenario/foresight approach highlights specific factors influencing change and possible effects on different ecosystems. In addition to ecology the programme will look at social, cultural and political factors and their combined impact on the Glomma watershed area. The programme commenced in 2006 and continues until 2010.

Senior Researcher Kjell Harvold represents NIBR on the programme's steering group.

In *Adapting to Extreme Weather in Municipalities* environmental and social sciences come together to explore the effect of extreme weather events on the environment and to establish what local councils are doing in preparation. The findings will inform procedures for systematising municipal efforts. CICERO is lead project partner and the project involves NIVA, Bioforsk, NIKU, NILU and NINA in addition to NIBR.

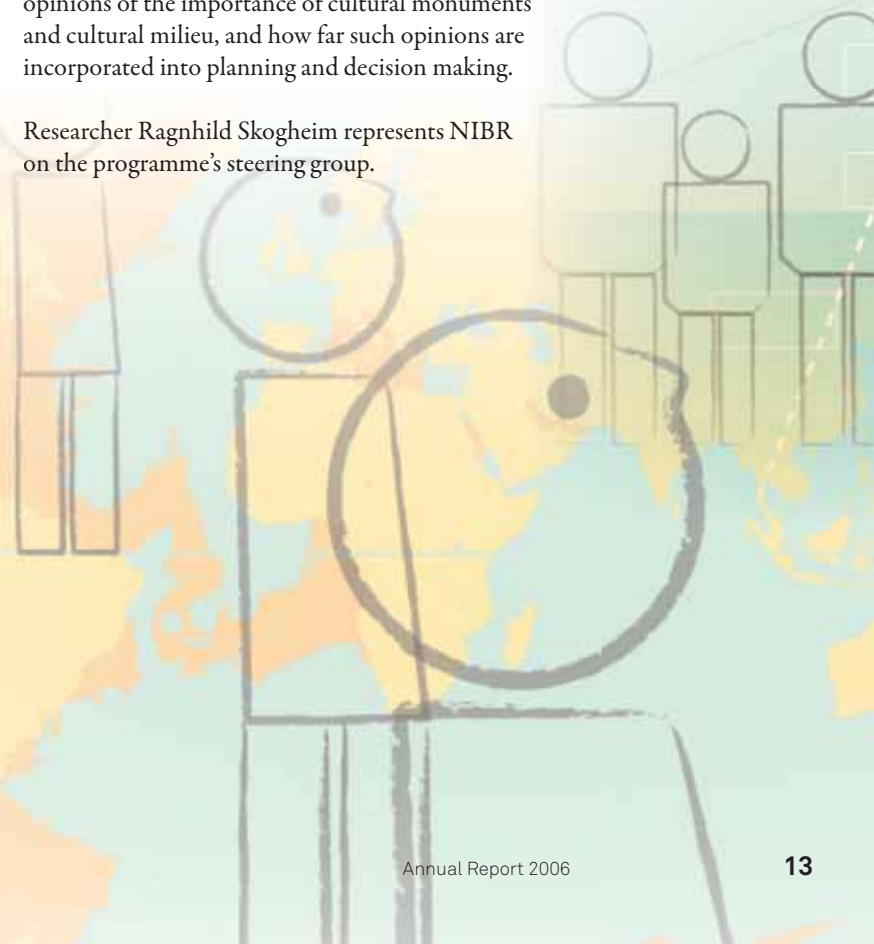
Senior Researcher Geir Orderud represents NIBR on the programme's steering group.

Outdoor Recreation is a strategic institute programme under which NIBR, NINA (lead partner) and NIKU are investigating changing recreation habits. NIBR is responsible for *Outdoor Recreation and Land Management*, a sub-study on peri-urban outdoor recreation, especially in coastal areas, peri-urban woodlands and continuous corridors. The project seeks to describe how the public use these areas while comparing mechanisms aimed at preserving the areas for public recreation. For the two case studies the cities of Kristiansand and Bodø were chosen. A knowledge status report has been compiled.

Senior Researcher Knut Bjørn Stokke leads the sub-project and represents NIBR on the programme's steering group.

NIKU is lead partner in a programme called *Cultural Monuments, Cultural Environments and Integrated Coastal Management*. Apart from NIBR two other institutes are involved, NINA and Bioforsk. The programme will attempt to improve our knowledge and understanding of cultural monuments and cultural milieu in ways which promote integrated coastal management. What little we do know is relatively fragmented, and quite unsuited for practical planning and decision making purposes. The programme includes a study of local knowledge and local opinions of the importance of cultural monuments and cultural milieu, and how far such opinions are incorporated into planning and decision making.

Researcher Ragnhild Skogheim represents NIBR on the programme's steering group.





Interdepartmental Programmes

Interdepartmental programmes at NIBR organise and facilitate strategic undertakings involving more than one research department. They are intended to strengthen knowledge in the various fields and raise NIBR's profile in the area. NIBR inaugurated in 2006 four interdepartmental programmes:

- Migration and integration research
- Place research
- Governance
- Comparative territorial research in the European/OECD area

Migration and Integration Research (MIR)

NIBR has convened an interdepartmental network group in the field of migration and integration research (MIR). With more than fifteen members, the group comprises a wide range of MIR-related interests and projects, and keeps track of developments both in Norway and abroad. Some of the themes singled out for particular attention are:

- Racism, discrimination and integration
 - particularly involving youth
- Immigrants and the housing market
- International migration patterns and immigrants' migration patterns within Norway
- Immigrants, economic enterprise and employment
- Migration and impacts in source and recipient communities

The programme is coordinated by Researcher Nora Gotaas.

Place Research

Action-related research for an integrated perspective on place development and economic growth lies at the bottom of NIBR's place research. Local place identity, reputation and image are aspects of this applied research. The programme engages with method development and improvement of analytical tools. A guide in socio-cultural place analysis has been prepared. Many of the research commissions NIBR receives from local and regional authorities touch on one or more of the programme's core modules:

- Place identity and image building
- Process analysis of place development
- Housing, migration patterns and place belonging
- Place and economic development
- Place as a physical environment

The programme is coordinated by Senior Researcher Guri Mette Vestby.

Governance

This programme seeks to promote NIBR as a leading national centre of governance research. Social coordination by network governance is increasingly common both in Norway and Europe, where public institutions traditionally have been organised hierarchically. Rather than diminishing in importance, however, public authorities are adapting and increasingly functioning as initiators, coordinators and members of networks. Generally referred to as a movement from *government* to *governance*, there is a growing need for studies of changing forms of social governance and coordination.

Research at NIBR under this programme includes studies of governance challenges related to local democracy (service delivery and political governance), promoting democracy in the south, and regional development. The programme also engages importantly with multilevel governance. The interdepartmental programme gives researchers an opportunity to study governance across academic borders, departmental loyalties and empirical interests.

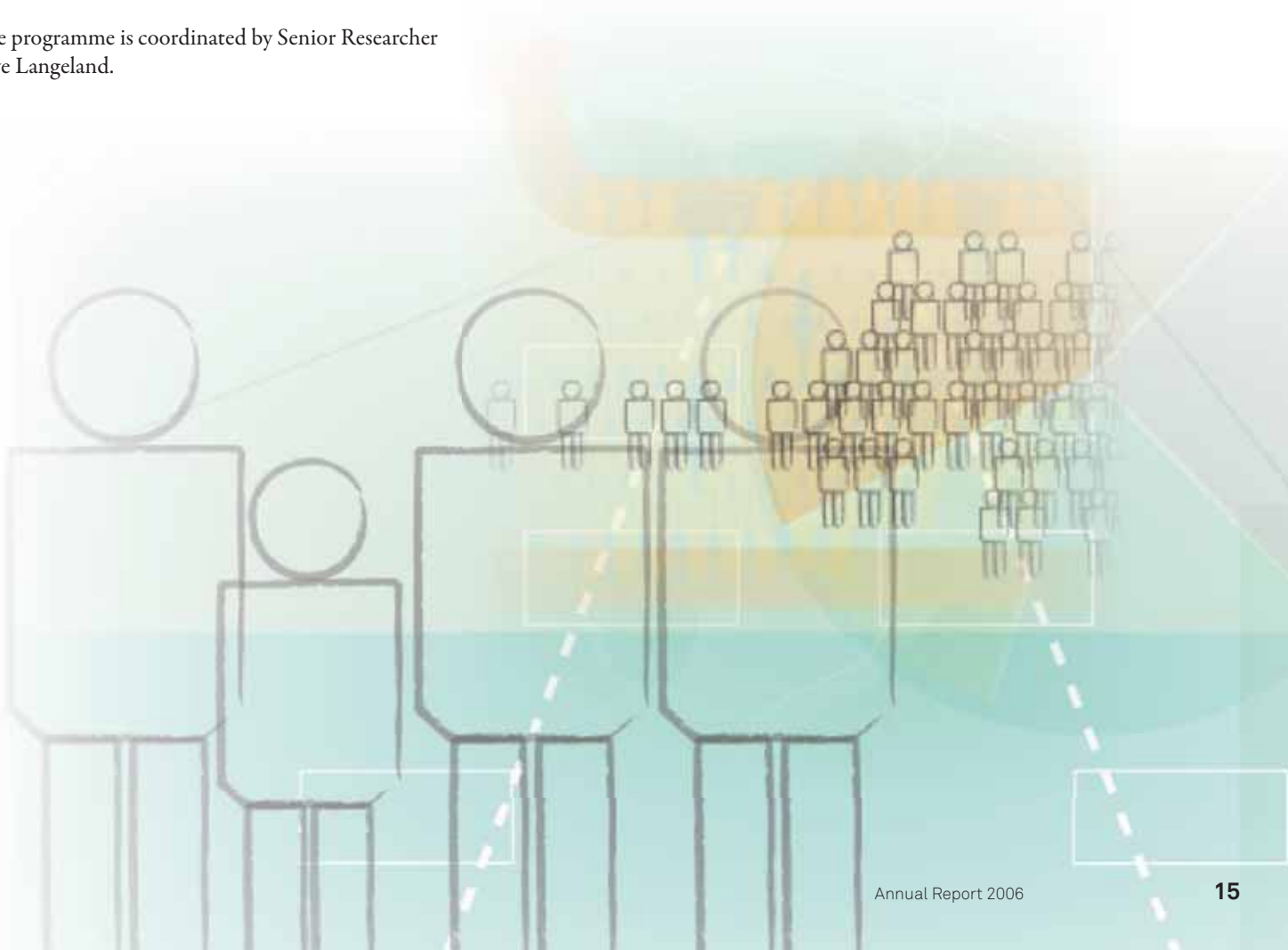
The programme is coordinated by Researcher Gro Sandkjær Hanssen.

Comparative Territorial Research in the European/OECD Area

This interdepartmental programme promotes studies of territorial and developmental patterns in Europe and the OECD area, thus strengthening NIBR's knowledge in comparative territorial research. The rate of globalisation, integration in Europe and, not least, EU expansion towards Eastern and Central Europe, leads to increasing focus on studies of European processes of change and Norway's role in Europe.

Studies under the programme include territorial impacts of social change in various regions and of sector policies of which territorial development potentials and territorial imbalances are key elements. Activity so far has been linked to OECD's work on rural and territorial indicators and analyses and the European Spatial Planning Observation Network (ESPON). Important future activities under the programme include the Seventh EU Framework Programme, Interreg, ESPON 2, OECD work on territorial indicators and national research programmes focusing on international territorial developments.

The programme is coordinated by Senior Researcher Ove Langeland.





International Activity

NIBR enjoys relations with a large and diverse array of organisations and bodies, and its international commitments are growing steadily, especially as they impinge on environmental, governance, development and regional research. The institute is involved in numerous joint ventures and subscribes to many scientific networks, among them European Co-operation in the Field of Scientific and Technical Research (COST), European Urban Research Association (EURA), OECD and Nordic Seminar for Housing and Urban Research (NSBB).

The partnership agreement with Norad has featured strongly in NIBR's international research portfolio since 1994. It was replaced in 2005 by a three-year framework agreement. There are ongoing projects under the agreement in Vietnam, Tanzania, Malawi and Sri Lanka. Outside the framework agreement, NIBR was involved in six comprehensive projects funded by Norad and Ministry of Foreign Affairs:

- Joint project with Hanoi University of Education in Vietnam
- Joint project with Royal Norwegian Society for Rural Development under the Business Experience Exchange Programme (BEEP), involving partnerships with universities in Malawi, Uganda and Zambia
- Joint project with Malawi National Statistical Office
- Joint Project with the Social Inclusion Research Fund in Nepal
- Evaluation of Norwegian Refugee Council
- Project on Sri Lankan institutions' use of aid following the Christmas 2004 tsunami

NIBR is a member of the European Spatial Planning Observation Network (ESPON), together with research centres in twenty-nine countries. The programme is operated under the framework of INTERREG III, an initiative to promote inter-regional cooperation in the EU, and is funded by European Regional Development Fund (ERDF). NIBR is ESPON's Norwegian Focal Point, with responsibilities for coordinating relations between national knowledge centres, clients and ESPON.

NIBR is also party to a three-year framework agreement concerning analysis, planning and evaluation services for the Swedish Business Development Agency (NUTEK).

NIBR researchers occupy positions in a number of leading international bodies, including Regional Science Association (RSA), UNESCO and EURA.

NIBR has partners in all of the Nordic countries and in several other European countries. Through its engagement in development research and scientific partnerships with countries in Eastern and Central Europe, NIBR has developed institutional and scientific partnerships with a number of universities and research organisations in countries in Asia, Africa, Eastern and Central Europe.

In addition to projects on Norwegian development cooperation in developing countries, NIBR conducts international projects abroad on behalf of and funded by the Ministries of Environment and Children and Equality. NIBR is also involved in projects under the Norwegian Research Council's Balkan Programme and in projects in China under a bilateral research programme. NIBR continued working with the China Institute for Reform and Development (CIRD) in 2006 on a joint research project and both institutes co-hosted a conference on regional differences in China in November 2006.

As a partner in Oslo Centre for Interdisciplinary Environmental and Social Research (CIENS), NIBR has been involved in setting up the SINO-Norwegian Centre for Interdisciplinary Environmental Research (SINCIERE) with the University of Oslo and the Chinese Academy of Science.

NIBR signed three consortium agreements in 2006 under the Sixth EU Framework Programme. We finalised three Interreg evaluations, two under the framework agreement with NUTEK, one as a commission from the Nordic Council of Ministers. NIBR participated in four ESPON projects in 2006. In one of these, *Territorial Impacts of European Fisheries Policy*, NIBR was lead partner.

NIBR has been engaged in developing OECD territorial databases since 1991. A joint project between NIBR and a Chinese university on *Residential Location and Travel in a Large Chinese City* received support from the International Volvo Foundation.

At the Nordic level, NIBR is involved in projects for the Nordic Council of Ministers (child protection and social policy projects in Russia and Baltic states) and collaborative projects with Nordic R&D institutions such as Nordregio, Institute of Local Government Studies (AKF), Copenhagen and NordForsk.

NIBR has been working in Saudi Arabia as a partner in the Demographic Development Study, Riyadh.

In 2006, NIBR started working in collaboration with University of Vienna on *The (Re)integration of the Ukraine into Europe* project.





Information and Dissemination

NIBR has a statutory obligation to ensure that information targeting clients and users of research maintains an intelligible and practical form. Scientific staff participate in public discussions on matters of debate within the orbit of the institute's research endeavours. NIBR is at pains to achieve a good balance between information adapted for consumption by the general public, by clients and commissioners, the media and users, and the national and international scientific community.

NIBR's resource department is in charge of the information activity, including NIBR's library.

Reports, articles and other publications

Most research projects are reported in one or more of NIBR's own publication series. In 2006, 20 reports, 36 working papers and 5 joint reports were published. Working papers are only published on our Internet pages. While NIBR reports contain summaries in English and Norwegian, only Norwegian summaries accompany joint reports and working papers. When an issue of NIBR reports is due for publication, notice is given in a presentation leaflet circulated to interested parties.

In addition to in-house publications, NIBR's scientific staff were responsible for 12 articles printed in peer review journals and 19 in other journals, compendia and digests. They edited or wrote 8 books or project reports in other formats, and presented 12 contributions to anthologies. Twenty-six features by NIBR staff appeared in the press, together with reviews, opinions etc. in periodicals and dailies.

Every year the institute updates its publications list. Works are categorised by subject matter, and the list goes back several years. It is published at www.nibr.no (click on *Publications*). It can also be ordered from the institute.

Regional Trends

NIBR publishes *Regional Trends*, a periodical for studies in regional research, including commissioned and self-financed projects. One issue was published in 2006. It receives support from Ministry of Local Government and Regional Development. The periodical is currently being reorganised as a peer review publication from 2007.

News from NIBR

News from NIBR (NIBR-aktuell) publishes information on current projects of interest at the institute. For a free subscription, please contact the institute.

Academic Conferences

Academic conferences and scientific seminars at home and abroad are two venues where scientific research at NIBR is brought to the attention of specialists and other salient groups. NIBR's scientific staff delivered 45 papers at international and national conferences, and 112 speeches/lectures at other Norwegian and international academic venues, seminars and conferences.

NIBR also arranges alone or with others academic conferences and seminars. NIBR hosted or co-hosted the following arrangements in 2006:

- A Multifaceted Community in an Arctic Climate – Qualities as a springboard for place development in Vardø
- Low density housing, land use planning and settlement in Iveland, Marnadal, Audnedal, Nord-Odal, Sør-Odal and municipality of Eidskog
- Tretorget and the wood industry – Nordic Benchmarking IV
- The Pacaging Arena – Nordic Benchmarking V
- Management of disputed natural resources: Nordic trends and new challenges
- New Rural Construction in China: Guaranteed Provision of Basic Public Services in Rural Areas – Making Indicators and Regional Classification Systems Operational
- 2006 conference of the International Association of Impact Assessment (IAIA)
- Environmental Institutes' joint strategic institute programme (SIP) on impact assessments

Public Meetings

Academic Forum is a series of public seminars on topical issues to which NIBR can make a contribution.

Six seminars were held in 2006.

- *Closing in on gangs*. On highly criminal groups or gangs
- *Health of child welfare children*
- *Bridge-building project*. On coping and opportunities for young offenders from Pakistani and Somali minority backgrounds
- *When roots are centralised*. Is there a risk of new forms of attitude formation taking hold among the young?
- *Timely Intervention*. Opportunities and challenges in Grouddalen
- *Rocked stability*. Music inside and outside prison

Library

NIBR's library has a wide-ranging stock of literature of relevance to activities at the institute. At the last count there were 23,000 separate books in the library. The library also subscribes to 180 periodicals and 12 newspapers.

A large and important part of the library's work is to facilitate and assist searches in databases for electronic journals, newspapers and other sources of information on the Internet. The library is party to the Norwegian Archive, Library and Museum Authority's (*ABM-utvikling's*) consortia agreements on access to ISI Web of Science and the whole-text base Atekst for Norwegian newspapers.

In addition to conventional lending services, the library provides copies of articles, generally on request from staff at NIBR, sometimes from other users, not least college and university students for whom our collections at NIBR provide valuable source material.

The library has close links with the libraries of the other Environmental Alliance institutes.

Contact information:

Chief Librarian:

Inger-Helene Wang Andresen,
inger.w.andresen@nibr.no

Information consultant:

Berit Willumsen,
berit.willumsen@nibr.no

To order/subscribe to NIBR

publications contact
nibr@nibr.no

Management/ economy



Naustdalslid, Jon
Director General/
mag. art.



Viste, Jon Olav
Director of finance/
Assistant Director
cand. oecon.



Gangnes, Kathrine
Accountant



Opaker, Mariann
Accountant

Resource Department



Fiskvik, Eli
Resource Director



Andresen, Inger-Helene Wang
Head of Library/
cand. mag.



Balberg, Inger
Secretary



Emami-Bistgani, Hossain
IT Systems
Administrator



Hjellvik, Sissel
Receptionist



Langeland, Joakim
IT assistant



Webenstad, Gro Karin
Secretary



Willumsen, Berit
Information
consultant

Department for Socioeconomic and Territorial Studies



Foss, Olaf
Research Director/
cand.sociol.



Bjørnsen, Hild-Marte
dr. polit.



Brevik, Ivar
cand. mag



Edvardsen, Hege Marie
cand. polit.



Gundersen, Frants
siv. ing.



Havnen, Eli
m. phil.



Haaland, Thomas
cand. mag.



Johnstad, Tom
cand. polit.



Juvkam, Dag
cand. polit



Kann, Frode
cand. oecon.



Langeland, Ove
dr. philos.



Langset, Bjørg
cand. polit.



Medby, Per
cand. polit.



Onsager, Knut
dr. polit.



Orderud, Geir Inge
cand. philol.



Skålnes, Sigrid
cand. polit.



Sæther, Bjørnar
dr. polit.



Sørli, Kjetil
cand. act.



Toresen, Jøran
cand. mag.



Vanberg, Vidar
cand. real.



Wollebæk, Bente Bonnevie
m. phil.

Department for International Studies in Development, Transition and Migration



Tesli, Arne
Research Director/
dr. polit.



Braathen, Einar
cand. polit.



Dalfelt, Arne
cand. agric.



Grødeland, Åse Berit
Ph.D.



Hansen, Stig Jarle
Ph.D.



Haug, Marit
Ph.D.



Hellevik, Siri Bjerkreim
cand. polit



Holm-Hansen, Jørn
dr. polit.



Kjosavik, Darley Jose
Ph.D.



Schou, Arild
dr. polit.



Wiig, Henrik
dr. polit.



Aasen, Berit
cand. sociol.



Aasland, Aadne
Ph.D.

Department for Welfare, Democracy and Governance Research



Lorentzen, Hilde
Research Director/
dr.polit.



Myrvold, Trine Monica
cand. polit.



Berglund, Frode
dr. polit.



Nergaard, Erik
m. phil.



Carlsson, Yngve
mag.art.
(leave of absence)



Stigen, Inger Marie
cand. polit.



Feiring, Marte
mag. art.



Winsvold, Marte
cand. polit.



Gotaas, Nora
cand. polit.



Hansen, Tore
professor



**Hanssen, Gro
Sandkjær**
cand. polit.



Helgesen, Marit
dr. polit.



Heløe, Leif A.
dr. odont.



Holm, Arne
dr. polit.



Hovik, Sissel
dr. polit.



Klausen, Jan Erling
dr. polit.



Kristofersen, Lars B.
cand.sociol.

Department for Housing and Environmental Planning Research



Nordahl, Berit
Research Director/
dr. ing.



Saglie, Inger-Lise
dr. ing.,
sivilarkitekt



Barlindhaug, Rolf
cand. oecon.



Schmidt, Lene
sivilarkitekt,
cand. polit.



Brattbakk, Ingar
cand. polit.



Skogheim, Ragnhild
mag. art



Dyb, Evelyn
cand. sociol.



**Stokke,
Knut Bjørn**
cand. polit.



Falleth, Eva Irene
dr. ing.



Søholt, Susanne
dr. polit.



Guttu, Jon
dr. ing.,
sivilarkitekt



Vestby, Guri Mette
cand. sociol.



Hanssen, Martin A.
cand. polit.



Harvold, Kjell A.
cand. polit.



Hofstad, Hege
cand. polit.



Kleven, Terje
dr. ing.



Nørve, Siri
cand. psychol.



Ruud, Marit Ekne
dr.art.



Røe, Per Gunnar
dr. polit.

NIBR Publications

Most NIBR Reports and Working Papers are published in Norwegian, but NIBR Reports have summaries in English.

NIBR Reports

Falleth, Eva Irene and Sissel Hovik

Local management of protected areas
Evaluation of municipal management in Setesdal Vesthei – Ryfylkeheiane
NIBR Report 2006:18

Gotaas, Nora

“Rocka stabilitet”
Music in and outside prison
A scheme for women in Oslo
NIBR Report 2006:8

Hansen, Tore, Gro Sandkjær Hanssen, Leif Arne Heløe and Inger Marie Stigen

The regional state – unity and diversity.
On the geographical division of the regional state and its consequences
NIBR Report 2006:9

Hanssen, Gro Sandkjær and Inger Marie Stigen

Unified County Trials in Møre og Romsdal and Hedmark.
A preliminary report
NIBR Report 2006:5

Hanssen, Gro Sandkjær, and Jan Erling Klausen

Network governance in a welfare state
Analysis of the Action Programme for Oslo Inner City East
NIBR Report 2006:10

Hanssen, Gro Sandkjær and Jan Erling Klausen

Differentiated task distribution among county governments
NIBR Report 2006:4

Hanssen, Gro Sandkjær and Marte Winsvold

Local e-democracy
On ICT mediated participation among people with disabilities
NIBR Report 2006:1

Helgesen, Marit

Many want all they can get, others don't want anything
User participation in mental health care
NIBR Report 2006:21

Holm, Arne

Evaluation – Program of Development for Oslo's East-Central Districts
Local environment and living condition
NIBR Report 2006:12

Kleven, Terje (ed.), Inger-Lise Saglie and Aud Tennøy

Revision of “Act relating to motor traffic on uncultivated land and in watercourses” – Values, Interests and Options
Report II from the MoSa project
NIBR Report 2006:16

Kleven, Terje (ed), Dagmar Hagen, Ole Reitan, Inger-Lise Saglie, Aud Tennøy and Odd Inge Vistad

Motor traffic on uncultivated land – scale, experiences and impacts
NIBR Report 2006:15

Kristofersen, Lars B., Sidsel Sverdrup, Thomas Haaland and Inger-Helene Wang Andresen

Intervention methods for safeguarding children – Do they work?
NIBR Report 2006:7

Myrvold, Trine M.

Local mental health services – trends 2002-2005
NIBR Report 2006:11

Myrvold, Trine M. and Hilde Lorentzen

Democracy facing an uphill battle
Local democracy wedged between top-level politics and local politics
NIBR Report 2006:2

Nenseth, Vibeke, Lene Schmidt and Ragnhild Skogheim

While synthetic turf is growing greener, swimming pools are falling apart
Planning and priority setting in relation to sports facilities
NIBR Report 2006:3

Predelli, Line Nyhagen

Immigrant organisations in Norway
Structures, activities and political participation
NIBR Report 2006:14

Ruud, Marit Ekne, Ingar Brattbakk, Lene Schmidt, Jon Guttu and Ivar Brevik

Development of satellite towns
Annotated bibliography
NIBR Report 2006:13

Saglie, Inger Lise, Eva Irene Falleth, Vilni Verner Holst Bloch, Anne Snellingen Bye and Margrete Steinnes

Scattered building and protection of farmland.
NIBR Report 2006:6

Saxi, Hans Petter and Inger Marie Stigen

Evaluation of the Parliamentary System of Government in Hedmark County
NIBR Report 2006:19

Stokke, Knut Bjørn, Martin Hanssen and Sissel Hovik

Municipal Coastal Zone Planning promoting a balanced development of aquaculture and fisheries
NIBR Report 2006: 17

NIBR Working Papers

Braathen, Einar and Siri Bjerkreim Hellevik

The Role of Decentralisation in Peace Making and Conflict Management Processes
A literature review
Working Paper 2006:125

Braathen, Einar

Participatory Planning and Management
Water supply in rural Tanzania
Working Paper 2006:123

Braathen, Einar

A Participatory Pathbreaker?
Experience with Power Reduction Strategy Papers from four South African countries
Working Paper 2006:122

Braathen, Einar and Pär Sköld

Decentralisation in Laos
Working Paper 2006:121

Brattbakk, Ingar, Ivar Brevik, Jon Guttu, Per-Øystein Lund, Marit Ekne Ruud and Lene Schmidt

Timely intervention
Knowledge Status and Challenges in Groruddalen
NIBR Working Paper 2006:126

Brevik, Ivar

Provision of housing and services for people with intellectual disability
NIBR Working Paper 2006:116

Carlsson, Yngve

Coordinating local crime prevention in Oslo
NIBR Working Paper 2006:131

Carlsson, Yngve

System of coaching for ethnic minority children
Preliminary evaluation of a coaching project in Kristiansand.
NIBR Working Paper 2006:117

Carlsson, Yngve

Better than its reputation?
An evaluation of Norwegian cities and especially Drammen
NIBR Working Paper 2006:101

Carlsson, Yngve and Thomas Haaland

Parents' contribution to sports clubs
NIBR Working Paper 2006:132

Foss, Olaf, Dag Juvkam and Knut Onsager

Literature study of the role of small and medium sized towns in regional development
NIBR Working Paper 2006:111

Hanssen, Martin A.

National guidelines for children and adolescents
An evaluation
NIBR Working Paper 2006:127

Hanssen, Gro Sandkjær and Marte Winsvold

Local ICT democracy for everyone
How can local authorities forward ICT participation among disabled citizens?
NIBR Working Paper 2006:110

Harvold, Kjell, Sissel Hovik and Erling Vindenes

From state government to green partnership
NIBR Working Paper 2006:120

Harvold, Kjell

Outlining scenarios for regional studies in effects of climate change
NIBR Working Paper 2006:108

Helgesen, Marit

Local communities' competence in mental health work
NIBR Working Paper 2006:135

Helgesen, Marit

Organizing for cooperation and coordination
NIBR Working Paper 2006:129

Helgesen, Marit

User participation – ideals and reality
NIBR Working Paper 2006:113

Hovik, Sissel and Knut Bjørn Stokke

Regional Coastal Zone planning
A tool for integrated coastal zone planning in local communities
NIBR Working Paper 2006:119

Haaland, Thomas

Outreach programme for children and adolescents in Skedsmo 2000, 2002 and 2005
NIBR Working Paper 2006:107

Haaland, Thomas

The database of children and adolescents in Skedsmo
A useful tool in the work among children and adolescents
NIBR Working Paper 2006:102

Kann, Frode and Kjetil Sørli

Predicting demographic development in four year terms
A model for small and medium sized communities
NIBR Working Paper 2006:138

Orderud, Geir Inge and Per Gunnar Røe

Banks and financial institutions
Procedures, risks and influence in housing projects
NIBR Working Paper 2006:109

Stokke, Knut Bjørn, Mathilde Anker, Atle Omland, Ragnhild Skogheim, Margrete Skår and Erling Vindenes

Planning and management of urban recreational areas
A knowledge status
NIBR Working Paper 2006:133

Strand, Arvid

New EIA Regulations
– local communities' experiences one year after
NIBR Working Paper 2006:130

Strand, Arvid

Housing and demographic development
Analyses of data from Sandnes 1994–2004
NIBR Working Paper 2006:112

Sæther, Bjørnar and Åse Lund Støen

Building competence in the value chain of small scale food producers in Innlandet
NIBR Working Paper 2006:134

Sørli, Kjetil

Migration in Vestfold County
NIBR Working Paper 2006:115

Sørli, Kjetil

Residential patterns and migration in Østfold County
NIBR Working Paper 2006:114

Sørli, Kjetil and Eli Havnen

Living conditions and migration in Groruddalen
NIBR Working Paper 2006:137

Vestby, Guri Mette (ed.)

Attractive cities
Focusing on Kongsberg
NIBR Working Paper 2006:106

Vestby, Guri Mette (ed.)

Attractive cities
Focusing on Drammen
NIBR Working Paper 2006:105

Vestby, Guri Mette (ed.)

Attractive cities
Focusing on Hønefoss
NIBR Working Paper 2006:104

Vestby, Guri Mette (ed.)

Attractive cities
Focusing on Fredrikstad
NIBR Working Paper 2006:103

Vestby, Guri Mette, Frants Gundersen and Ragnhild Skogheim

Kongsberg – an attractive city to live in?
NIBR Working Paper 2006:128

Winsvold, Marte and Hilde Lorentzen

Electronic civilian initiative
Midterm evaluation
NIBR Working Paper 2006:136

Joint Reports

Dyb, Evelyn, Ingar Brattbakk, Klaus Bergander and Janne Helgesen

Free but homeless
Homelessness after imprisonment
Joint Report NIBR/KRUS/Byggforsk 2006

Gotaas, Nora and Torunn Højdaahl

Evaluation of the Network project
Joint Report NIBR/KRUS 2006

Johnstad, Tom and Birgit Leirvik

Consolidating the TotAl-group
Joint Report NIBR/Østlandsforskning 2006

Medby, Per, Jon Christophersen, Karine Denizou and Dag Fjeld Edvardsen

Socioeconomic effects of universal design
Joint Report NIBR/Byggforsk 2006

Tesli, Arne, Jørn Thomassen and Jan Sørensen (ed.)

Quality of Norwegian EIAs
Joint Report NIBR/ENVIRA 2006

External Publications

Articles in journals with referee

Berglund, Frode

Same procedure as last year? On political behaviour amongst senior citizens. *World Political Science Review*, 2006, 2(1): article 1 ISSN 1935-6226

Grødeland, Åse Berit

Public perceptions of non-governmental organisations in Serbia, Bosnia & Herzegovina and Macedonia: «It really strikes me as suspicious when people buy a jeep or a luxurious car and drive around in it after two or three successful projects». *Communist and Post-Communist Studies*, 2006, 39(2): 221-246 ISSN 0967-067X

Grødeland, Åse Berit og Aadne Aasland

Uformalitet og uformell praksis i Sentral- og Sørøst-Europa. *Nordisk Øst-Forum*, 2006, 20(4): 365-388 ISSN 0801-7220

Heløe, Leif Arne

Norske erfaringer med regionreform og forsøk: spesiell vekt på dilemmaene mellom den regionale stat og det nasjonale, og mellom sektor og helhet. *Nordisk Administrativ Tidsskrift*, 2006, 87(3-4): 203-207 ISSN 0029-1285

Hovik, Sissel and Morten Edvardsen

Private-Public Partnership: An Exceptional Solution in Nature Conservation in Norway. *Local Environment*, 2006, 11(4): 361-372 ISSN 1354-9839

Kjosavik, Darley Jose

Between Decentralized Planning and Neo-liberalism: Challenges for the Survival of Indigenous Peoples of Kerala, South India. *Social Policy & Administration*, 2006, 40(6): 632-651 ISSN 0144-5596

Johnsen, Åge og Jan Erling Klausen

Kommunesammenslåingers politiske økonomi: en analyse av velgeratferd i rådgivende folkeavstemming. *Norsk Statsvitenskapelig Tidsskrift*, 2006, 22(1): 22-45 ISSN 0801-1745

Næss, Petter

Are short daily trips compensated by higher leisure mobility? *Environment and Planning B: Planning and Design*, 2006, 33(2): 197-220 ISSN 0265-8135

Næss, Petter, Bent Flyvbjerg and Søren Buhl

Do Road Planners Produce More Honest Numbers than Rail Planners? An Analysis of Accuracy in Road-traffic Forecasts in Cities versus Peripheral Regions. *Transport Reviews*, 2006, 26(5): 537-555 ISSN 0144-1647

Orderud, Geir Inge

The Norwegian home-building industry – locally embedded or in the space of flows? *International Journal of Urban and Regional Research*, 2006, 30(2): 384-402 ISSN 0309-1317

Stigen, Inger Marie, Tom Christensen and Per Læg Reid

Performance Management and Public Sector Reform: The Norwegian Hospital Reform. *International Public Management Journal*, 2006, 9(2): 113-139 ISSN 1096-7494

Tennøy, Aud, Jens Kværner and Karl Idar Gjerstad

Uncertainty in environmental impact assessment predictions: the need for better communication and more transparency. *Impact Assessment and Project Appraisal*, 2006, 24(1): 45-56 ISSN 1461-5517

Articles in anthologies

Falleth, Eva Irene

Setesdal Vesthei – Ryfylkeheiane, Norway: local co-management in a protected area. In Yvonne Rydin and Eva Falleth (eds.): *Networks and Institutions in Natural Resource Management*. Cheltenham: Edward Elgar, 2006 (pp. 57-73) ISBN 1-84542-294-5

Gotaas, Nora

Cultural Background and Communication in Court. In Øyvind Dahl, Iben Jensen, Peter Nynäs (eds.): *Bridges of Understanding: Perspectives on Intercultural Communication*. Oslo: Unipub forlag, Oslo Academic Press, 2006 (pp. 241-256) ISBN 82-7477-269-5

Hanssen, Gro Sandkjær og Jan Erling Klausen

Oslo Inner City Districts: Network Failure in the Face of Policy Success (Chapter 2). In Martin Marcussen and Jacob Torfing (eds.): *Democratic Network Governance in Europe*. London: Palgrave-Macmillan, 2006 (pp. 47-65) ISBN 1-4039-9530-3

Hanssen, Gro Sandkjær, Jan Erling Klausen and Signy Irene Vabo

Traces of Governance: Policy networking in Norwegian local government (Chapter 6). In Hubert Heinelt, David Sweeting and Panagiotis Getimis (eds.): *Legitimacy and Urban Governance: A cross-national comparative study*. London: Routledge, 2006 ISBN 0-415-37659-9

Holm-Hansen, Jørn

Fakta om Estland. I Elisabeth Bakke (red.): *Sentral-Europa og Baltikum etter 1989*. Oslo: Det Norske Samlaget, 2006 (Kap. 3) ISBN 82-521-6786-1

Holm-Hansen, Jørn

Litauen – Sovjetrepublikken som fikk vesteuropeisk partimønster. I Elisabeth Bakke (red.): *Sentral-Europa og Baltikum etter 1989*. Oslo: Det Norske Samlaget, 2006 (Kap. 5) ISBN 82-521-6786-1

Holm-Hansen, Jørn

Polsk politikk 1989 til 2005: ingen start på bar bakke. I Elisabeth Bakke (red.): *Sentral-Europa og Baltikum etter 1989*. Oslo: Det Norske Samlaget, 2006 (Kap. 6) ISBN 82-521-6786-1

Langeland, Ove

Entreprenørskap og risikokapital. I Olav Spilling (red.): *Entreprenørskap på norsk*. 2. utg. Bergen: Fagbokforlaget, 2006 (pp.147-168) ISBN 82-450-0405-7

Saglie, Inger-Lise

Fragmented institutions: the problem facing natural resource management. In Yvonne Rydin and Eva Falleth (eds.): *Networks and Institutions in Natural Resource Management*. Cheltenham, UK: Edward Elgar, 2006 (pp. 1-14) ISBN 1-84542-294-5

Stokke, Knut Bjørn

The Morsa River Basin, Norway: collective action for improving water quality. In Yvonne Rydin and Eva Falleth (eds.): *Networks and Institutions in Natural Resource Management*. Cheltenham: Edward Elgar, 2006 (pp. 123-138) ISBN 1-84542-294-5

Aasland, Aadne

Latvijas iedzīvotāju attieksme pret labklājības sistēmu. In Feliciana Rajevska (ed.): *Sociālā atstumsība un sociālā iekļaušana: situācijas izvērtējums Latvijā*. Riga: Latvijas Universitāte Akadēmiskais apgads, 2006 (pp. 73-89)

Aasland, Aadne

Russians and the economy. In Nils Muiznieks (ed.): *Latvian-Russian Relations: Domestic and International Dimensions*. Riga: Latvijas Universitāte Akadēmiskais apgads, 2006 (pp. 53-63) ISBN 9984-802-10-8

Scientific monographies and anthologies

Bjørnsen, Hild-Marte

Labour Supply and Labour Conditions in Norwegian Farm Households.
Oslo: University of Oslo, 2006 (Series of dissertations submitted to the Faculty of Social Sciences, University of Oslo; No. 49)
ISSN 1504-3991

Falleth, Eva and Yvonne Rydin (eds.)

Networks and Institutions in Natural Resource Management.
Cheltenham: Edward Elgar, 2006
ISBN 1-84542-294-5

Nordahl, Berit

Deciding on Development: Collaboration between Markets and Local Governments.
Trondheim: NTNU, 2006 (Doctoral Thesis at NTNU 2006:6) ISBN 82-471-7947-4

Professional books and textbooks

Brox, Ottar

The Political Economy of Rural Development: Modernisation without Centralisation?
Delft: Eburon, 2006

Dyb, Evelyn og Paul Bjerke

Journalistikk i risikosammenheng.
Oslo: Abstrakt forlag, 2006

Aasland, Aadne

Going Nordic – A NordForsk User Survey.
Oslo: NordForsk, 2006

Reports

Bjørnsen, Hild-Marte and Erik Biørn

The Joint Labour Decisions of Farm Couples: A Censored Response Analysis of On-farm and Off-farm Work.
Oslo: Department of Economics, University of Oslo, 2006 (Memorandum No 05/2006)

Holm-Hansen, Jørn, Mensur Vegara, Thor S. Larsen, Sreten Andonov, Dane Bošev and Fatmir Selimi

Review of Norges Vel's Agricultural projects in Kosovo and Macedonia 2002-2006
Noragric Report no. 34

Johansen, Steinar, Hild-Marte Bjørnsen, Karl-Erik Hagen og Dag Juvkam

Distriktpolitisk virkeområde for Norge 2006.
Oslo: Transportøkonomisk institutt, 2006.
(TØI rapport; 824/2006)

Kristoffersen, Lars B. og Helle Wessel Andersson

Opptreppingsplanens betydning for barn og unge: sammenstilling av funn fra fire forskningsprosjekter.
Trondheim: SINTEF Helse, 2006.
(SINTEF Helse Rapport A105)

Langeland, Ove, Dag Juvkam, Hege Marie Edvardsen, Knut Onsager m.fl.

Storstadsutveckling för nationell tillväxt: ett analysunderlag.
Stockholm: Verket för näringslivsutveckling (NUTEK), 2006. (NUTEK B 2006:4)

Sandlund, O. T., Sissel Hovik, J. R. Selvik, L. Øigarden og B. Jonsson (red.)

Nedbørfeltorientert forvaltning av store vassdrag: felles strategisk instituttprogram 2002-2006. Trondheim: NINA, 2006 (NINA Temahefte 35)

Chapters or articles in textbooks, conference reports and academic journals

Berglund, Frode

Regionale forskjeller i oppslutning om Kristelig Folkeparti.
Regionale trender, 2006, (1): 56-60

Foss, Olaf

ESPON: et europeisk perspektiv på regional utvikling.
Regionale trender, 2006, (1): 3-6

Grødeland, Åse Berit

Informality, Corruption and Public Procurement in the Czech Republic, Slovenia, Bulgaria and Romania.

In Julia Kuszniar (ed.): Koszalin Institute of Comparative European Studies, Working Papers, No. 6, 2006, (pp. 25-36). Koszalin, Polen

Helgesen, Marit

Brukermedvirkning: realiteter og idealer: om brukeres medvirkning på systemnivå i kommunene.
I Det lokale folkestyret i endring? Utredning fra Lokaldemokratikommisjonen. Oslo 2006 (Norges offentlige utredninger 2006:7)

Klausen, Jan Erling og D. A. Christensen

Innbyggerinitiativ og lokaldemokrati. Vedlegg 2 i Det lokale folkestyret i endring? Utredning fra Lokaldemokratikommisjonen. Oslo 2006 (Norges offentlige utredninger 2006:7)

Kleven, Terje og Ragnhild Skogheim

Å sette pris på friluftsliv – bare for eksperter? Utmark, tidsskrift for utmarksforskning, 2006, nr. 1

Langeland, Ove

Storbyene som motor i regional utvikling.
Regionale trender, 2006, (1): 7-11

Moen, Bjørn og Sigrud Skålnes

Noreg i Europa – om norsk deltaking i Interreg-program: kva nytte har Noreg av å delta i Interreg III-program A, B og C?
Regionale trender, 2006, (1): 31-38

Myrvold, Trine Monica

Den vanskelige samordningen.
Respekt (SKUR, Høgskolen i Bodø), 2006, (4): 56-58

Naustdalslid, Jon

The Use and Usefulness of Social Science Research.
I Report: International Forum on the Social Science – Policy Nexus Buenos Aires 20–24 February 2006: Globalization and Intercultural Linkages: The Case of Migration and Intercultural Linkages between Pakistan and Norway, workshop organized by The Norwegian National Commission for UNESCO, Buenos Aires 22 February 2006. Oslo: Den norske UNESCO-kommisjonen, 2006

Stokke, Knut Bjørn

Ansvarsfordeling i vassdragsforvaltningen.
I Sandlund, O. T., Sissel Hovik m.fl. (red.): Nedbørfeltorientert forvaltning av store vassdrag: felles strategisk instituttprogram 2002-2006. Trondheim: NINA, 2006 (NINA Temahefte 35)

Stokke, Knut Bjørn, Sissel Hovik m.fl.

Bruk og forvaltning av elvesletter.
I Sandlund, O. T., Sissel Hovik m.fl. (red.): Nedbørfeltorientert forvaltning av store vassdrag: felles strategisk instituttprogram 2002-2006. Trondheim: NINA, 2006 (NINA Temahefte 35)

Sørli, Kjetil

Flyttestorbyer hovedtrekk for 20 årskull i storbyer og storbyomland: sammendrag for fem soner etter sentralitet.
Regionale trender, 2006, (1): 19-30

Tennøy, Aud

Hvorfor lages og vedtas det planer som gir vekst i biltrafikken?
Regionale trender, 2006, (1): 47-55

Tesli, Arne

Aktører, roller og ansvar i KU-arbeidet.
I Tesli, A., J. Thomassen og J. Sørensen (red.): Kvaliteten på norske konsekvensutredninger. Oslo: NIBR og Miljøalliansen (samarbeidsrapport)

Tesli, Arne

Kvaliteten på arbeidet med fastsetting av utredningsprogram.
I Tesli, A., J. Thomassen og J. Sørensen (red.): Kvaliteten på norske konsekvensutredninger. Oslo: NIBR og Miljøalliansen (samarbeidsrapport)

Vestby, Guri Mette

Byenes attraktivitet – tverrfaglige stedsanalyser og byprofiler.
Regionale trender, 2006, (1): 12-18

Vestby, Guri Mette

Byers attraktivitet og omdømme.
Plan, 2006, (1): 40-45

Aasland, Aadne

Attitudes towards the Latvian welfare system.
In Felician Rajevska (ed.): *Insiders Views about Social Inclusion and Social Security in Latvia*.
Oslo: Fafo, 2006 (Fafo report 527) (pp. 65-84)

**Feature articles and reviews
in journals and newspapers****Brevik, Ivar**

Dette er sjelden kost innen samfunns-
vitenskapene.

Omtale av Knut Halvorsen:
Ensomhet og isolasjon i vår tid.
Velferd, 2006, 95(3): 36-37

Heløe, Leif Arne

Hva blir statens rolle i et regionalisert Norge?
Stat og styring, 2006, 16(1)

Sosial kapital, hva er nå det?
Harstad Tidende, 6.1.2006

Nord-Norge foran økonomisk boom?
Harstad Tidende 21.1.2006

Rødgrønn språk om storregionene?
Harstad Tidende 30.1.2006

Farvel til statskirke?
Harstad Tidende 21.2.2006

Men hva med staten?
Harstad Tidende 23.3.2006

Forskning og juks.
Harstad Tidende 12.4.2006

Varslernes vilkår.
Harstad Tidende 26.6.2006

Korruperte kommuner?
Harstad Tidende 7.8.2006

Sykefraværet øker igjen.
Harstad Tidende 7.9.2006

Bompenge eller mer kaos?
Harstad Tidende 22.9.2006

Norske besteforeldre som rollemodeller.
Harstad Tidende 6.10.2006

Fylkeskommuner av det gamle slaget?
Dagsavisen 17.10.2006

Kontroll og byråkrati.
Harstad Tidende 3.11.2006

Mot full klimakrise – eller?
Harstad Tidende 4.12.2006

Dyb, Evelyn

Bokanmeldelse: Hemlöshetens politik.
Socialvetenskaplig Tidskrift, 4-2006

Guttu, Jon, Lene Schmidt og Inger-Lise Saglie

Kritisk blick eller reklame.
Aftenposten 21.4.2006

**Hovik, Sissel, Knut Bjørn Stokke
og Martin Hanssen**

Kommunal kystsoneplanlegging og fiskeri-
og havbruksnæringens interesser.
Norsk fiskeoppdrett, 2006, 31(11)

Myrvold, Trine Monica

Arbeidsdeling i regjeringen?
Kommunal rapport, 08/2006

Sexy kommuneforskning!
Kommunal rapport, 16/2006

Demokrati i motvind.
Kommunal rapport, 24/2006

Den vanskelige samordningen.
Kommunal rapport, 32/2006

Kulturlov og -liv.
Kommunal rapport, 39/2006

Orderud, Geir Inge

Bokanmeldelse: Labrianidis, Lois (ed.): *The Future of Europe's Rural Peripheries*. Aldershot, UK: Ashgate, 2004. ISBN 0-754-64054-X.
Impact Assessment and Project Appraisal, 2006, 24(2): 164

Aasland, Aadne

Bokanmeldelse: Jolanta Aidukaite: *The Emergence of Post-Socialist Welfare State – the Case of the Baltic States: Estonia, Latvia and Lithuania*.
Nordisk Østforum, 2006, (3): 337-340

Conferences**Papers from international
and national conferences****Barlindhaug, Rolf og Kristin Skjørten**

Housing choice among parents with joint
physical custody
Presentert på Housing in an Expanding Europe,
International Conference arrangert av The
European Network of Housing Research,
Ljubljana, Slovenia 2.–5.7.2006

Barlindhaug, Rolf

Utleiebilger for vanskeligstilte, fra tilbuds-
til etterspørselssubsidier
Presentert på Nordisk Boligseminar, arrangert
av Institut för bostadsforskning, Gävle, Uppsala
Universitet 6.–8.9.2006

Berglund, Frode og Jon Rogstad

Politisk integrasjon i lokaldemokratiet.
Et spørsmål om sosial kapital eller individuelle
ressurser?
Presentert på Den XV Nordiske
Kommuneforskerkonferansen, arrangert av
universitetene i Odense/Turku/Oslo/Göteborg,
Odense 24.–26.11.2006

Bjørnsen, Hild-Marte og Steinar Johansen

Periphery problems and regional development
in Norway: defining regions eligible for support
Presentert på European Network on Industrial
Policy International Conference, Limerick,
Irland 20.–22.6.2006

Bjørnsen, Hild-Marte og Steinar Johansen

Governing regional policy in Norway
Presentert på Economic & Social Research
Council Seminar on «New Public Management
and Regional Policy», arrangert av University of
Newcastle, Newcastle 29.–30.6.2006

Bjørnsen, Hild-Marte og Erik Bjørn

The Joint Labour Decisions of Farm Couples:
A Censored Response Analysis of On-farm and
Off-farm Work
Presentert på 21st Annual Congress of the
European Economic Association, Wien 24.–
28.8.2006

Dyb, Evelyn og Ingar Brattbakk

Released and Homeless: Homelessness
and housing after release from prison
Presentert på Housing in an Expanding Europe,
International Conference arrangert av The
European Network of Housing Research,
Ljubljana, Slovenia 2.–5.7.2006

**Falleth, Eva Irene, Sissel Hovik
og Inger-Lise Saglie**

Hybride samarbeidsformer for bruk og vern
av fjellområder i Norge
Presentert på konferansen «Förvaltning av
omstridda naturressurser: nordiska trender
och nya utmaningar», arrangert av Umeå
Universitet og NIBR, Umeå 15.–16.3.2006

Falleth, Eva Irene

Nordiske utfordringer i forvaltning av omstridte naturressurser

Presentert på konferansen «Forvaltning av omstridde naturressurser: nordiske trender og nye utfordringer», arrangert av Umeå Universitet og NIBR, Umeå 15.–16.3.2006

Falleth, Eva Irene, Sissel Hovik og Inger-Lise Saglie

Co-management of Norwegian mountain areas: commercial development and conservation within a new institutional framework
Presentert på 12th International Symposium on Society and Resource Management (ISSRM) Global Challenges & Local Responses, arrangert av Simon Fraser University, Vancouver, BC, Canada 5.–7.6.2006

Grødeland, Åse Berit

Informal relations and corruption in public procurement in the Czech Republic, Slovenia, Bulgaria and Romania

Presentert på 26th Annual Conference of International Association for Impact Assessment (IAIA), arrangert av IAIA og Miljøverndepartementet, Stavanger 23.–26.5.2006

Grødeland, Åse Berit og Aadne Aasland

Informality and informal practices in East Central and South East Europe
Presentert av Grødeland på 12th International Anti-Corruption Conference (IACC), arrangert av Transparency International, Guatemala City, 15.–18.11.2006

Hansen, Tore og Lawrence Rose

Partipolitisk konvergens i norske kommuner
Presentert på Den XV Nordiske Kommuneforskerkonferansen, arrangert av Odense Universitet, Odense, 24.–26.11.2006

Hanssen, Gro Sandkjær

ICT and the politics of local government – empowering the politicians?

Presentert på Den nasjonale fagkonferansen i statsvitenskap 2006, arrangert av Universitetet i Bergen, Bergen 4.–6.1.2006

Hanssen, Gro Sandkjær og Jostein Askim

Some like it soft? Exploring local politicians' use of informal information from stakeholders
Presentert på Den XV Nordiske Kommuneforskerkonferansen, arrangert av Odense Universitet, Odense 24.–26.11.2006

Hanssen, Gro Sandkjær, Signy Irene Vabo og Inger Marie Stigen

IKT som drivkraft for administrasjonens representasjonsrolle – hva med lokaldemokratiet?

Presentert på den XV Nordiske Kommuneforskerkonferansen, arrangert av Odense Universitet, Odense 24.–26.11.2006

Haug, Marit

Combining qualitative and quantitative methods in the study of social exclusion in Nepal
Presentert på konferansen «Social inclusion and nation-building in Nepal», arrangert av Social Science Baha, Kathmandu juni 2006

Hellevik, Siri Bjerkreim

The Territorial Dimension of Conflict and Peace: Regionalism and Municipalism

Presentert på konferansen «Rethinking Popular Representation», arrangert av CPD-nettverket, Universitetet i Oslo, Randsvangen 25.–27.10.2006

Heløe, Leif Arne

Norske erfaringer fra regionreform og forskning
Presentert på Nordisk Administrativt Forums 3. årskonferanse, København 24.8.2006

Johnstad, Tom

Raufoss – from a learning company to a learning region

Presentert på «Learning together for local innovation – promotion of learning regions»: European Conference on Educational Research (ECER) – European Network on Vocational Education and Training (VETNET), Geneve 13.9.2006

Kjosavik, Darley Jose

Understanding Formalisation of Land Rights in a Historical Context: Formalisation of Land Rights and Dispossession of Indigenous Communities in Highland Kerala, India
Presentert på NFU Annual Conference «Ethics, Human Rights and Development», arrangert av NFU, SUM and the Centre for Human Rights, University of Oslo, Oslo 13.–15.9.2006

Klausen, Jan Erling og Michael Haus

Urban governance as depolitization and repoliticization: institutional change, differentiation of urban regimes and citizen empowerment

Presentert på The Fifteenth International Conference of the Council for European Studies, Chicago 29.3.–2.4.2006

Klausen, Jan Erling

Institutional transitions in Norwegian local government

Presentert på «Cities in city regions», first biannual European Urban Research Association conference, arrangert av Universitetet i Warszawa og EURA, Warszawa 11.–14.5.2006

Kleven, Terje

Motorferdsel i utmark – konklusjoner fra et utvalgsarbeid

Presentert på konferansen «Stillehet og ro – verdier og kunnskap», arrangert av Statens forurensningstilsyn, Direktoratet for naturforvaltning og Norsk forening mot støv, Oslo 7.12.2006

Langeland, Ove

Territorial Impacts of European Fisheries Policy
Presentert på «Europe of the Sea»: Conference of Peripheral Maritime Regions of Europe, North Sea Commission, Bergen 16.–17.1.2006

Langeland, Ove

Territorial Impacts of European Fisheries Policy, Third Interim report

Presentert på European Spatial Planning Observation Network-seminar, Salzburg, Østerrike 13.–14.3.2006

Langeland, Ove

Territorial Impacts of European Fisheries Policy
Presentert på European Spatial Planning Observation Network og NORBALT-seminar, Pärnu, Estland 24.–25.4.2006

Langeland, Ove

Territorial Impacts of European Fisheries Policy, Final report

Presentert på European Spatial Planning Observation Network-seminar, Helsinki, Finland 14.–15.11.2006

Naustdalslid, Jon

The Use and Usefulness of Social Science Research

Presentert på International Forum on the Social Science – Policy Nexus: Globalization and Intercultural Linkages: The Case of Migration and Intercultural Linkages between Pakistan and Norway, workshop arrangert av The Norwegian National Commission for UNESCO, Buenos Aires 20.–24.2.2006

Nordahl, Berit

Boligforsyning mellom myndighet og marked: modeller for samarbeid – muligheter for styring
Presentert på Bostads- og urbanforskningsseminarium, arrangert av Nordisk Samarbeid for Bolig- og Byforskning (NSBB), Gävle 2006

Nørve, Siri

Boligpolitikk og boligkvaliteter: Hva skjer med utviklingen av Universell utforming/tilgjengelighet?

Presentert på Et samfunn for alle – status og strategier. NFFs 2. nasjonale forskningskonferanse, arrangert av Norsk nettverk for forskning om funksjonshemming, Trondheim 30.–31.10.2006

Orderud, Geir Inge og Arne Tesli

Social fragmentation, lack of integration and marginalization – is relative poverty happening in our urban developed societies?

Presentert på 26th Annual Conference of International Association for Impact Assessment (IAIA), arrangert av IAIA og Miljøverndepartementet, Stavanger 23.–26.5.2006

Orderud, Geir Inge

Indicators and Criteria for Spatial Classification in China – Experiences from the Initial Stage
Presentert på konferansen «New Rural Construction in China: Guaranteed Provision of Basic Public Services for Rural Areas – Making Indicators and Regional Classification Systems Operational», arrangert av China Institute for Reform and Development, Haikou, Hainan Island, China 25.–25.11.2006

Predelli, Line Nyhagen

Ethnic minority women and political influence in Norway
Presentert på 6th European Gender Research Conference: «Gender and citizenship in a multicultural context», Universitetet i Lodz, Polen 31.8.–3.9.2006

Ruud, Marit Ekne

Groruddalen – drabantby i endring
Presentert på Nordiskt seminarium om bostads- og urbanforskning, arrangert av Universitetet i Uppsala, Gävle 6.–8.9.2006

Saglie, Inger-Lise

Risk and uncertainty in EIA as arguments in decision making
Presentert på 26th Annual Conference of International Association for Impact Assessment (IAIA), Stavanger 23.–26.5.2006

Skogheim, Ragnhild og Knut Bjørn Stokke

Local management of cultural heritage and cultural environments in the Norwegian coastal zone
Presentert på LITTORAL 2006: Coastal Innovations and Initiatives, 8th International Conference, arrangert av Gdansk University of Technology, EUROCOAST, Gdansk, Polen 18.–20.9.2006

Skålnes, Sigrid

Functional, institutional or identity-creating? The conditioning of cross-border development programmes in the Nordic countries
Presentert på Regional Studies Association (RSA) s International Conference: «Shaping EU Regional Policy», Leuven, Belgia 7.–9.6.2006

Stigen, Inger Marie

Staten tog över – hva hende sen? (om den norske sykehusreformen)
Presentert på Nordisk hälso- och sjukvårdskonferens, arrangert av Norsk sykehus- og helsetjenesteforening, Jyväskylä, Finland 12.6.2006

Stokke, Knut Bjørn

Territorial variations in fisheries and aquaculture in Norway – the significance of territorial level
Presentert på «Europe of the Sea»: Conference of Peripheral Maritime Regions of Europe, North Sea Commission, Bergen 16.–17.1.2006

Stokke, Knut Bjørn

The Water Framework Directive and the Norwegian Spatial Planning System
Presentert på Trabant Spatial Planning Systems and the Implementation of the Water Framework Directive in the Baltic Sea Region Countries, arrangert av Nordregio og Kungliga Tekniska Högskolan, Stockholm 13.–14.2.2006

Tesli, Arne og Tor Lerstang

Experiences from Norwegian and Nordic case studies on SEA
Presentert på 26th Annual Conference of International Association for Impact Assessment (IAIA) – Nordic day, arrangert av IAIA og Miljøverndepartementet, Stavanger 22.5.2006

Winsvold, Marte

Online debates as arenas for political participation
Presentert på Fagkonferansen i statsvitenskap, Bergen januar 2006

Aasland, Aadne, Arne Grønningseter og Tone Fløtten

Attitudes towards income maintenance and income disparities in Estonia, Latvia and Norway
Presentert på konferansen Poverty, social assistance and social inclusion – developments in Estonia and Latvia in a comparative perspective, arrangert av University of Latvia, University of Tartu and Fafo, Riga 9.–10.5.2006

Aasland, Aadne, Arne Grønningseter og Tone Fløtten

How egalitarian? Perceptions of inequality in Estonia, Latvia and Norway
Presentert på the 20th Conference on Baltic Studies: Re-Imagining the Baltic Region: Perspectives on the Past, Present, and Future, arrangert av the Association for the Advancement of Baltic Studies, Washington DC, 15.–17.6.2006

Lectures and papers on other national and international conferences and seminars**Bjørnsen, Hild-Marte**

Gårdbrukeres arbeidstilbud i et regionalpolitisk perspektiv
Presentert på Forfatterseminar «Levekår i landbruket», arrangert av Norges forskningsråd og Statistisk sentralbyrå 2.–3.5.2006

Brevik, Ivar

Seniorennes boligpreferanser
Presentert på medlemsmøte i Langhus Rotary, Langhus 2.3.2006

Brevik, Ivar

Hva er fattigdom i Norge?
Presentert på Fagforbundets storbysamling, Sørmarka 3.3.2006

Brevik, Ivar

Omsorg i fremtiden – slik vil eldre bo
Presentert på Faglig Forums kongress Omsorg 2006 – for fremtiden, Trondheim 13.–15.3.2006

Brevik, Ivar

Det gode seniorliv! Korleis leve og bu i framtida
Presentert på folkemøte i regi av omsorgsetaten i Ulstein kommune og Arena eiendom, Ulsteinvik 19.4.2006

Brevik, Ivar

Slik vil eldre bo
Presentert på informasjonsmøte i regi av DES Norge, Tromsø 26.4.2006

Brevik, Ivar

Omsorg i fremtiden – slik vil eldre bo
Presentert på Temadag om hovedsatsingsområdet Utvikle og utvide døgntilbudet i Melhus kommune, Melhus 28.4.2006

Brevik, Ivar

Levekår og helseproblemer
Presentert på masterkurs i helsefremmende arbeid, Senter for helsefremmende nærmiljøarbeid, Høgskolen i Vestfold, Horten 12.5.2006

Brevik, Ivar

Sosial ulikhet i helse med fokus på barn og unge
Presentert på seminar arrangert av Senter for oppvekst i Drammen kommune, Sosialsenteret og Drammensregionens barnevernsamarbeid, Drammen 29.5.2006

Brevik, Ivar

Slik vil eldre bo. Noen hovedresultater med vekt på seniorennes interesse for tilgjengelighet
Presentert på seminar om Boliger og boformer for eldre, arrangert av Husbanken, Drammen 8.6.2006

Brevik, Ivar

Hva er fattigdom – omfang og årsak, innledning på seminar om fattigdom i Norge, arrangert av LO i Oslo, Oslo 12.9.2006

Brevik, Ivar

Utvikling og status i Oslos eldreomsorg: noen hovedtrekk
Presentert på medlemsmøte i Oslo forening av Norsk pensjonistforbund, Oslo 20.9.2006

Brevik, Ivar

Utvikling og status i Oslos eldreomsorg
Presentert på Fagforbundet Oslos pensjonistutvalgs høstkonferanse 2006, Kongsberg 19.11.2006

Dyb, Evelyn

Homelessness in the Nordic Countries
Presentert på konferansen «Nordic-Baltic Housing: New Dynamics and Challenges», arrangert av Teknisk universitet i Riga og Institutt for samfunnsgeografi, Universitetet i Bergen, 21.–23.9.2006

Dyb, Evelyn

Bolig og bostedsløshet etter fengselsopphold
Presentert på Regional samarbeidskonferanse,
arrangert av Akershus fylkeskommune og
Husbanken regionkontor øst, Hurdal 27.9.2006

Dyb, Evelyn

Bolig og bostedsløshet etter fengselsopphold
Presentert på Erfaringskonferansen
«Strategien mot bostedsløshet», arrangert
av Sosial- og helsedirektoratet og Husbanken
region Oslo, Oslo 23.10.2006

Dyb, Evelyn

Hemlöshet ur et europeisk perspektiv
Presentert på konferansen «Hemlöshet»,
arrangert av Socialstyrelsen m.fl., Göteborg
11.10.2006

Dyb, Evelyn

Boligbehov til vanskeligstilte
Presentert på Kontaktforum – bostedsløshet,
arrangert av Husbanken regionkontor Oslo,
Oslo 8.11.2006

Feiring, Marte

Handikapregimer
Presentert på Forskning om funksjonshemming
og funksjonshemmedes barrierer,
nettverkseminar arrangert av Norges teknisk
naturvitenskapelige universitet, Trondheim
23.3.2006

Feiring, Marte

Evaluering av prosjektet i Nordland
Presentert på konferansen «Regionale
partnerskap for karriereveiledning», arrangert
av Utdanningsdirektoratet, NAV og Telemark
fylkeskommune, Skien 22.–23.11.2006

Feiring, Marte

Organisering og system
Presentert på arbeidseminar arrangert av
Nordland fylkeskommune, Bodø 26.–27.10.2006

Gotaas, Nora

Trekk ved organisering og gjennomføring av
Brobyggerprosjektet
Presentert på Faglig forum:
«Brobyggerprosjektet: mestring og muligheter
for unge domfelte med somalisk og pakistansk
bakgrunn», arrangert av NIBR, Oslo 4.4.2006

Gotaas, Nora

Hvordan og hvorfor virker prosjektet Musikk
i fengsel og frihet? Presentert på Faglig forum:
«Rocka stabilitet: musikk i fengsel og frihet.
Presentasjon av en evalueringsrapport»,
arrangert av NIBR, Oslo 16.11.2006

Guttu, Jon

Attraktive tettsteder, boliger og mangfold
Presentert på Kommunepunktkonferansen
2006, arrangert av Forum for Kommunale
Planleggere, Kongsberg 6.–7.2.2006

Guttu, Jon

Urbane boligbølger mot Brygge, Hav og
Strand – eller grønne håp om eplehager?
Presentert på seminar arrangert av Rådet for
Drammensregionen, Drammen 24.4.2006

Guttu, Jon

Fra Torshov til Sinsen
Presentert på Kjenn din by, byvandring i Oslo,
arrangert av Oslo bymuseum, Oslo 23.5.2006

Guttu, Jon

Attraktive byer – eksempler fra NIBRs
arbeid med stedsutvikling
Presentert på konferansen «Fargerikt samfunn
i arktisk klima», arrangert av NIBR og
Husbanken i Hammerfest, Vadsø 29.6.2006

Guttu, Jon

Bebyggelsesplanlegging
Presentert på konferansen «Gode
småhusområder», arrangert av Husbanken
og Hageselskapet, Sørmarka 22.–24.8.2006

Guttu, Jon

10 sjekkpunkter for utearealer i tett by
Presentert på konferansen «Boligplanlegging
i tett by», arrangert av Husbanken og
Hageselskapet, Vetre, Asker 12.–14.9.2006

Guttu, Jon

Planlegging av småhusområder
Presentert på konferansen «Utbygging
av Gamlegrendåsen Nord», arrangert av
Kongsberg kommune, Kongsberg 6.12.2006

Guttu, Jon

Boligfortetting med kvalitet
Presentert på konferansen «Fortetting
med kvalitet», arrangert av Norsk
Eiendomskompetanse, Oslo 7.12.2006

Hanssen, Gro Sandkjær

Lokalt e-demokrati: inkludering eller
ekskludering? IKT og vilkårene for
lokalpolitisk deltakelse og engasjement blant
funksjonshemmede
Presentert på konferansen «Folkevalgt –
en mulighet for alle? Utfordringer for å
kunne delta i politisk virksomhet – uansett
funksjonsevne», arrangert av Deltasenteret,
Sosial- og helsedirektoratet, Oslo 9.3.2006

Hanssen, Gro Sandkjær

Kan e-kommunikasjon mellom lokalpolitikere
og innbyggere styrke lokaldemokratiet?
Presentert på Lokaldemokratisk forum,
arrangert av Universitetet i Oslo, Institutt for
statsvitenskap, Oslo 10.5.2006

Haug, Marit

The impact of the tsunami aid delivery system
Presentert på konferansen «Review of some
key issues in aid delivery after the tsunami»,
arrangert av Bilateral aid group, Sri Lanka,
Colombo april 2006

Haug, Marit

The role of international aid agencies in the
tsunami rebuilding process
Presentert på konferansen «Review of the
role of aid in the tsunami rebuilding process»,
arrangert av FORUT, Wadduwa, Sri Lanka juni
2006

Haug, Marit

Et kvinneperspektiv på humanitær bistand:
likheter og forskjeller mellom bistand til
gjenoppbygging i Afghanistan og etter
tsunamien på Sri Lanka
Presentert på konferansen «Kvinner rolle
i humanitære katastrofer – utfordringer
for norsk politikk», arrangert av Norad og
Utenriksdepartementet, Oslo 1.11.2006

Hellevik, Siri Bjerkreim

The territorial dimension of conflict and peace
Presentert på seminarrekke på
FoU-bevilgningen, arrangert av
Utenriksdepartementet, Oslo 21.9.2006

Hellevik, Siri Bjerkreim

The private-public nexus in delivering HIV/AIDS
services: a theoretical outline
Presentert på IV research net conference 2006,
arrangert av Senter for internasjonal helse,
Universitetet i Bergen, Bergen 19.–20.10.2006

Heløe, Leif Arne

Argumentene i regiondebatten
Presentert på seminar om regionalisering,
arrangert av Akershus fylkeskommune,
avdeling for regional utvikling, Gardermoen
24.1.2006

Heløe, Leif Arne

Sterke folkevalgte regioner: oppgaver
og størrelser
Presentert på 12k – strategiseminar 2006,
arrangert av 12k-kommunesamarbeidet i
Vestfold, Langesund 5.4.2006

Heløe, Leif Arne

Regionaldebatten i helseperspektiv
Presentert på samfunnsmedisinsk seminar,
arrangert av Sosial- og helsedirektoratet og
Fylkesmannen i Finnmark, Vadsø 13.10.2006

Heløe, Leif Arne

Dilemmaet statlig kontroll versus lokalt
selvstyre
Presentert på NVE seminar om internkontroll,
arrangert av Norges Vassdrags- og
Energidirektorat, Oslo 27.9.2006

Heløe, Leif Arne

Effektiv stat – lite smart?
Presentert på etatsjefskonferansen 2006,
arrangert av Fylkesmannen i Finnmark,
Vadsø 1.11.2006

Heløe, Leif Arne

Er tilsyn forenlig med dialog? Om dialogen mellom kommune og stat, og om dilemmaene som oppstår
Presentert på internseminar, arrangert av Fylkesmannen i Sør-Trøndelag, Trondheim 4.12.2006

Hovik, Sissel

Regional kystzoneplanlegging – et redskap for integrert kystzoneforvaltning?
Presentert på Formidlingsseminar – kunnskapsutvikling for integrert kystzoneforvaltning, arrangert av Norges forskningsråd, Tønsberg 12.–13.6.2006

Hovik, Sissel

Regional kystzoneplanlegging – et redskap for en integrert kystzoneforvaltning?
Presentert på Fiskeridirektoratets planforum, Bergen 9.–10.11.2006

Hovik, Sissel

Komplekse samarbeidsformer for bruk og vern av fjellområder i Norge
Presentert på Programkonferanse «Landskap i endring, sesjon om fjellområder», arrangert av Norges forskningsråd, 27.–29.11.2006

Johnstad, Tom

Bedrifts- og næringsutvikling i Innlandet
Presentert på Næringslivsdagene, arrangert av BI Gjøvik, Gjøvik 22.3.2006

Johnstad, Tom

Raufoss – fra konsern til dynamisk klynge
Presentert på Industridagene 2006, arrangert av Norges Varemesse, Lillestrøm 19.9.2006

Klausen, Jan Erling

Innbyggernes medvirkning, regulert deltakelse, grasrota og kommunen
Presentert på idéseminar om lokaldemokrati, arrangert av Lokaldemokratikommisjonen/ Kommunal- og regionaldepartementet, Gardermoen 30.11.2006

Kristofersen, Lars B.

The health of children in child welfare services: Are we in need of improved interagency cooperation?
Presentert på Anglo-Norwegian Exchange Seminar, arrangert av Department of Health/ Department of Skills and Education, UK, Edinburgh, Scotland 11.–13.10.2006

Kristofersen, Lars B.

Barnevernbarns sundhed 1990-2002 – alvorlige helseproblemer og dødsfall i en populasjon av 99.000 barn og unge samt deres foreldre fulgt i perioden i Norge
Presentert på Socialforskningsinstituttets instituttseminar, København 20.6.2006

Langeland, Ove

Territorial Impacts of European Fisheries Policy
Presentert på konferansen «Marin næringsutvikling», arrangert av Kommunal- og regionaldepartementet, Gardermoen 6.3.2006

Medby, Per

Utredningsarbeid om virkninger og kostnader både ved befolkningsveksten i sentrale byområder og av fraflyttingen i distriktene
Presentert på konferansen «Sentraliseringens pris», arrangert av Kommunal- og regionaldepartementet, Oslo 21.9.2006

Medby, Per

Samfunnsøkonomiske effekter av universell utforming
Presentert på Husbankens fagdag om universell utforming, Drammen 15.11.2006

Myrvold, Trine Monica

Demokrati i motvind: Lokaldemokrati mellom storpolitikk og lokalpolitikk
Presentert på konferansen «Demokrati på Svalbard», arrangert av Justisdepartementet, Oslo 6.2.2006

Myrvold, Trine Monica

Utfordringer for kommunesektoren – kan organisering spille noen rolle?
Presentert på konferansen «Hvordan kan kommunesektoren finne organisatoriske løsninger på sine utfordringer?», arrangert av Hå kommune, Hå 16.2.2006

Myrvold, Trine Monica

Regionalisering, legitimitet og oppgavefordeling
Presentert på konferansen «Demokrati på Svalbard», arrangert av Kommunal- og regionaldepartementet, Oslo 5.4.2006

Myrvold, Trine Monica

Kommunenes organisering av psykisk helsearbeid
Presentert på konferansen «Utviklingen av psykisk helsearbeid i lys av Opptrappingsplanen for psykisk helse», arrangert av Sosial- og helsedirektoratet, Oslo 11.5.2006

Myrvold, Trine Monica

Reform of Public Services and the Relationships between Central and Local Authorities in Norway
Presentert for en delegasjon fra Kina, arrangert av NIBR og Utenriksdepartementet, Oslo 22.6.2006

Myrvold, Trine Monica

Den krevende parlamentarismen
Presentert på konferansen «Parlamentarisme i Bergen», arrangert av Bergen kommune, Bergen 7.9.2006

Myrvold, Trine Monica

Evaluering av storbysatsingen
Presentert på konferansen «Opptrappingsplanens storbysatsing», arrangert av Bergen kommune og Sosial- og helsedirektoratet, Bergen 21.9.2006

Myrvold, Trine Monica

Demokrati i motvind: Lokaldemokrati mellom storpolitikk og lokalpolitikk
Presentert på konferansen «Demokrati på Svalbard», arrangert av Longyearbyen Lokalstyre, Longyearbyen 20.11.2006

Myrvold, Trine Monica

Kommunalt psykisk helsearbeid for barn og unge: Utvikling i organisering, koordinering og samarbeid
Presentert på Nordisk Råds sesjon, arrangert av Nordisk Råds velfærdsutskott, København 30.11.2006

Nørve, Siri

Vil markedet selv sørge for tilbud av universelt utformede boliger?
Presentert på Husbankens fagdag om universell utforming, Drammen 15.11.2006

Nørve, Siri

Universell utforming og aktørenes oppgaver og roller i byggeprosessen: Vil markedet selv sørge for tilbud av universelt utformede boliger?
Presentert på Bolig 2006 – Universell utforming – en utfordring for alle, arrangert av Husbanken sør i samarbeid med Tekna og Nito, Drammen 21.10.2006

Nørve, Siri

Medvirkning og universell utforming – hvor ligger de strategiske mulighetene i byggesaker?
Presentert på konferansen «Medvirkning i plan- og byggesaker – nedbygging av funksjonshemmedes barrierer: Skinddemokrati eller reell medvirkning?», arrangert av Statens råd for funksjonshemmede, Oslo 19.10.2006

Ruud, Marit Ekne

Bedre bomiljø – utfordringer for Groruddalen
Presentert på USBLs representantskapsmøte, Holmen, Asker 4.2.2006

Ruud, Marit Ekne

Fremtidens boliger og boligmarked.
Boligpreferanser og boligtrender
Presentert på «Fremtidens boliger», arrangert av Berge Sag og Trelast AS; Haugesund 8.3.2006

Ruud, Marit Ekne

Sosiokulturelle stedsanalyser – en veileder
Presentert på konferansen Sosiokulturelle stedsanalyser arrangert av Akershus fylkeskommune, Oslo 16.5.2006

Ruud, Marit Ekne

Sosiokulturelle stedsanalyser – en veileder
Presentert på konferanse om sosiokulturelle stedsanalyser, arrangert av Miljøverndepartementet, Oslo 13.6.2006

Ruud, Marit Ekne

Tiltak i tide – muligheter og utfordringer for Groruddalen
Presentert på Faglig forum, arrangert av NIBR 13.9.2006

Ruud, Marit Ekne

Ungbo i 1990-årene
Presentert på Ungbos 30-års jubileum,
arrangert av Oslo kommune, Oslo 10.11.2006

Saglie, Inger-Lise

Forvaltningssystemer i seterområder
Presentert på Seterkonferansen, arrangert
av Fylkesmannen i Sør-Trøndelag,
Stjørdal 21.3.2006

Saglie, Inger-Lise

Nye lovverktøy for hytteplanlegging
Presentert på Finsese seminaret,
Finse 29.–30.5.2006

Saglie, Inger-Lise

Spredt bygging på landbruksjord
Presentert på seminar arrangert av
Statens landbruksforvaltning, Oslo 27.6.2006

Saglie, Inger-Lise

Spredt bygging på landbruksjord
Presentert på seminar for alle
landbruksavdelingene i fylkene, arrangert
av Statens landbruksforvaltning, Sarpsborg
7.9.2006

Saglie, Inger-Lise

Spredt bygging på landbruksarealer
Presentert på konferansen «Boligkvalitet i by»,
arrangert av Hageselskapet, Asker 14.9.2006

Saglie, Inger-Lise

Boligkvalitet i reguleringsplanlegging
Presentert på seminar for Oslo og alle
kommuner i Akershus, arrangert av
Fylkesmannen i Oslo – Akershus, Hurdalssjøen
11.11.2006

Schmidt, Lene

Fortett med vett
Presentert på konferanse om fortetting,
arrangert av Bolig- og byplanforeningen,
Stavanger, Stavanger 23.2.2006

Schmidt, Lene

Planlegging av skolegården
Presentert på seminar for
barnerepresentantene i bydelene, Oslo
kommune, Oslo 1.3.2006

Schmidt, Lene

Fortett med vett
Presentert på konferansen «Boligplanlegging
i tett by», arrangert av Husbanken og
Hageselskapet, Asker 12.–14.9.2006

Skogheim, Ragnhild

Ringvirkninger av kultursatsinger, et kritisk
perspektiv
Presentert på «Festivaler og steder», arrangert
av fylkeskommunene i Buskerud, Vestfold og
Telemark, Husbanken, Riksantikvaren og Norsk
Form, Porsgrunn 20.–21.6.2006

Skålnes, Sigrid

Regionnivåets møte med EUs
evalueringsregime
Presentert på EVA-seminar – det offentlige
erfaringer med evalueringer, arrangert av
Oxford Research, Kristiansand 24.–25.8.2006

Stigen, Inger Marie

Den regionale stat. Enhet og mangfold
Presentert på Fylkesmannsmøte, arrangert av
Fornyings- og moderniseringsdepartementet,
Hamar 7.6.2006

Stigen, Inger Marie

Den regionale stat. Enhet og mangfold
Presentert på Etatsledermøte: fylkesmannen
i Rogaland, arrangert av Fylkesmannen i
Rogaland, Stavanger 26.10.2006

Stigen, Inger Marie

Helsereformen 2002. Sykehusene som
nasjonalt ansvar
Presentert på seminar for svenske politikere,
arrangert av Sosial- og helsedirektoratet,
Oslo 7.12.2006

Stokke, Knut Bjørn

Presentasjon av delprosjektet Friluftsliv
og arealforvaltning
Presentert på Brukerseminar Friluftsliv-SIP,
arrangert av NINA, NIBR, NIKU, Oslo 25.4.2006

Stokke, Knut Bjørn

Kommunal kystsoneplanlegging og
fiskerieringens interesser
Presentert på Forskerformidlingsseminar
– kunnskapsutvikling for integrert
kystsoneforvaltning, arrangert av Norges
forskningsråd, Tønsberg 12.–13.6.2006

Stokke, Knut Bjørn

Regional and local coastal zone planning
in Norway – tools for ICZM
Presentert på konferansen «Coastal zone
planning in Norway and Scotland», arrangert av
Hordaland fylkeskommune, Bergen 1.9.2006

Stokke, Knut Bjørn

Kommunal og regional kystsoneplanlegging
Presentert på konferansen Planlegging
på sentralt og regionalt nivå, arrangert av
Universitetet for miljø- og biovitenskap,
Institutt for landskapsplanlegging, Ås
22.9.2006

Stokke, Knut Bjørn

Kommunal kystsoneplanlegging – et redskap
for en balansert utvikling av havbruk og fiske?
Presentert på Fiskeridirektoratets konferanse
om kystsoneplanlegging, Bergen 10.11.2006

Stokke, Knut Bjørn

Regional utvikling og planlegging i Norge
Presentert på Innføring i samfunnsgeografi,
arrangert av Universitetet i Oslo, Institutt for
sosiologi og samfunnsgeografi, Oslo 23.11.2006

Søholt, Susanne

Hva kan vi gjøre for å styrke flerkulturelle
bomiljø?

Presentert på Nasjonal konferanse om
boligsosial forvaltning, arrangert av
Husbanken, Bergen kommune, KBL,
Bergen 25.1.2006

Søholt, Susanne

Housing, ethnic minorities and integration
Presentert på Nordisk hovedstadskonferanse,
arrangert av Lieboerforeningen, Oslo 3.2.2006

Søholt, Susanne

Evaluering – bolig, bomiljø og levekår
Presentert på tilbagemeldingskonferanse for
Handlingsplan for Oslo Indre Øst, arrangert av
Oslo kommune, Oslo 25.4.2006

Søholt, Susanne

Innvandrere i boligmarkedet – politiske
målsettinger og sosiale realiteter
Presentert på «Migrasjon – nye byer
– nye steder», arrangert av Norsk Planmøte,
Arkitektthøgskolen Oslo 21.9.2006

Søholt, Susanne

Betingelser for flerkulturalitet – oppvekst og
møteplasser
Presentert på «Migrasjon – nye byer
– nye steder», arrangert av Norsk Planmøte,
Arkitektthøgskolen Oslo 22.9.2006

Søholt, Susanne

Hva kan vi gjøre for å styrke flerkulturelle
bomiljø?
Presentert på Vestlandske boligbyggelags
seminar, Solstrand, Bergen 21.10.2006

Søholt, Susanne

Etniske minoriteter og boligmarkedet i Oslo
Presentert på konferansen Det flerkulturelle
rom – byutvikling som integrering, arrangert
av Oslo kommune v/byutviklingskomiteén,
Arkitektthøgskolen i Oslo, Tverrfaglig arena for
byutvikling, Oslo 2006

Vestby, Guri Mette

Den attraktive byen: overordnet blikk på
kommunens muligheter
Presentert på konferansen Rullering av
kommuneplanen, arrangert av Fredrikstad
kommune, Hvaler 16.1.2006

Vestby, Guri Mette

Fortellingen om stedet: hvor attraktive er
egentlig stedene?
Presentert på Kommuneplankonferansen: 4711
Lykkeby – Det gode tettstedet ..., arrangert av
Forum for Kommunale Planleggere, Kongsberg
7.2.2006

Vestby, Guri Mette

Byenes attraktivitet: med fokus på Hokksunds
stedsutvikling og næringsutvikling
Presentert på seminar om Øvre Eikers
næringsutvikling, arrangert av Øvre Eiker
Næringsforum, Hokksund 7.3.2006

Vestby, Guri Mette

Byens gode navn og rykte: om byutvikling og imagebygging
Presentert på seminar om Sandefjords byutvikling, arrangert av Sandefjord Byforum, Sandefjord 29.3.2006

Vestby, Guri Mette

Byenes attraktivitet – fokus på Hønefoss og Ringerike
Presentert på Temamøte Ringerike kommunestyre, arrangert av Ringerike kommune, Hønefoss 4.5.2006

Vestby, Guri Mette

Ringeriksregionen!
Presentert på Scenario 2020 for Ringeriksregionen, arrangert av Hønefoss Næringshage og Høgskolen i Buskerud i samarbeid med Regionrådet for Ringerike, Hole og Jevnaker, Hønefoss 23.5.2006

Vestby, Guri Mette

Kongsberg: attraktivt arbeidssted! Attraktivt bosted?
Presentert på seminar om Kongsberg som bosted, arrangert av Kongsberg kommune, Kongsberg 22.6.2006

Vestby, Guri Mette

Regional attraktivitet: hva må til for å virke tiltrekkende på mennesker og bedrifter?
Presentert på Ringerikskonferansen 2006, arrangert av Ringerike Næringsforum, Hønefoss 17.10.2006

Wollebæk, Bente Bonnevie

Utvikling av bedrifters innovasjonsevne – en innledning til diskusjon
Presentert på Kompetansemeglersamling – nasjonal konferanse for programmet
Forskingsbasert kompetansemegling, arrangert av Norges forskningsråd, Ålesund 8.–9.11.2006

Wollebæk, Bente Bonnevie

Utvikling av bedrifters innovasjonsevne – en presentasjon
Presentert på Programstyresamling: Forskningsbasert kompetansemegling, arrangert av Norges forskningsråd, Oslo 13.12.2006

Aasland, Aadne

Forskningssystemet i Russland
Presentert på NordForsk internseminar, Oslo/St. Petersburg 27.–29.9.2006

Aasland, Aadne

Velferdsgapet Norge-Russland
Presentert på Norges forskningsråds Nordområdekonferanse, Tromsø 13.–14.11.2006

Projects

Projects are listed by department. Each department's project leaders are listed alphabetically and projects in chronological order.

Department for Welfare, Democracy and Governance Research

Berglund, Frode

Election Project
Institute for social research

Carlsson, Yngve

System of coaching for ethnic minority children
Kristiansand City Council

Parents' contribution to sports clubs
Ministry of Culture and Church Affairs

Piloting the SLT Model in Oslo
Oslo City Council

Clausen, Sten-Erik

Child Welfare in Norway 1990–2006
Ministry of Children and Equality

Gotaas, Nora

Project Evaluation "Music in Prison and on the Outside"
Norwegian Council of Music

Feiring, Marte

Local Authorities' Outreach Programmes
Oslo City Council

Integrated and coordinated career and education advice
Ministry of Labour and Social Inclusion

Helgesen, Marit

User participation and user consultation. An evaluation of the Mental Health Action Plan's concern for users
Research Council of Norway

The Mental Health Action Plan's competence building performance in the mental health sector
Research Council of Norway

The role of knowledge in construction and regulation of health and education politics
Université Catholique de Louvain (CERISIS)/EU

Holm, Arne

Government targets and local autonomy
SINTEF Building and Infrastructure

Neighbourhood studies, east central Oslo
Oslo City Council

Homelessness, small and medium sized municipalities
Ministry of Labour and Social Inclusion

Hovik, Sissel

Regional Coastal Zone Planning
Research Council of Norway

How to make it
Research Council of Norway

Green partnership – a nature management policy
Norwegian Farmers' Union

Consultations between State and Municipalities – in Norway and Denmark
AKF, Denmark

Klausen, Jan Erling

East central Oslo
Oslo City Council

Governance for sustainability
Landeshauptstadt Hannover/EU

Voluntary Work in the Cities
Oslo City Council

Kristofersen, Lars B.

Children at risk and flexible welfare services
Research Council of Norway

Alternatives to orphanages in Northwest Russia
Nordic Council of Ministers, Denmark

Knowledge status – Child Protection
Ministry of Children and Equality

Lorentzen, Hilde

Allocation of tasks and responsibilities between local and regional government
Ministry of Local Government and Regional Affairs

Myrvold, Trine Monica

Local Authorities and the Mental Health Action Plan – Organisational effects
Research Council of Norway

New Models of organising the public sector locally and centrally
Research Council of Norway

Self-government in Longyearbyen
Longyearbyen Community Council

Wider Leeway for Cities
Directorate for Health and Social Affairs

Predelli, Line Nyhagen

Political participation and organisation in multicultural Norway
Research Council of Norway

Stigen, Inger Marie

ICT and local democracy
Research Council of Norway

Path-Breaker Programme – An Evaluation
Ministry of Local Government and Regional Affairs

Norwegian Medical Association
– Regional Councils
The Norwegian Medical Association

Regional division of State activity
Ministry of Government Administration
and Reform

Governing public health services
International Research of Stavanger (IRIS)

Parliamentarism as a form of government
for Hedmark County Council
Hedmark County Council

Sverdrup, Sidsel
Public attitudes to and knowledge of mental
health and psychiatric disorders
Research Council of Norway

User participation: ideals and realities
Research Council of Norway

Winsvold, Marte
Electronic civilian initiative: on the right of
civilians to propose motions for the local
council on matters concerning council activity
Ministry of Local Government and Regional
Affairs

Department for Housing and Environmental Planning Research

Barlindhaug, Rolf
End User Survey
Norwegian State Housing Bank
Construction Cost Programme

Share Custody – A Survey
Institute for social research

Sandnes, development policy and housing
preferences
Sandnes Town Council

Supply side universal design
SINTEF Building and Infrastructure

Housing Grant Subsidy Model
Norwegian State Housing Bank

Housing benefit and interpretation of “income”
Ministry of Local Government and Regional
Affairs

Brattbakk, Ingar
Suburbs – fresh information on residents and
living conditions
Ministry of Local Government and Regional
Affairs

Information on landlords and tenures covered
by the Tenancy Act
Ministry of Local Government and Regional
Affairs

Dyb, Evelyn
FEANTSA - European Federation of National
Organisations Working with the Homeless
Directorate for Health and Social Affairs

Housing ex-prisoners
Norwegian State Housing Bank

Homelessness – A Survey
SINTEF Building and Infrastructure

Data bank on low-income home seekers
Norwegian State Housing Bank

Adapted service to women with alcohol-related
problems – extension of the Street Hospital
Salvation Army

Falleth, Eva Irene
Municipal management of Setesdal protected
landscape area
Directorate for Nature Management

Management of Blåfjella Skjækerfjella
– Pilot Scheme Evaluation
Directorate for Nature Management

Final comparison of alternative management
models
Directorate for Nature Management

Forms of governance in urban development
Research Council of Norway

Guttu, Jon
Housing quality, quality of life, sustainability
SINTEF Building and Infrastructure

Development and Information work
Norwegian State Housing Bank

Piloting environmentally friendly urban
development projects
Ministry of the Environment

Environmentally friendly urban transport
The Norwegian Public Roads Administration

Hanssen, Martin A.
Harmful algal blooms in Ugandan lakes
Norwegian Institute for Water Research

Evaluation of national guidelines for children
and adolescents
Ministry of the Environment

EIA training at the Norwegian University
of Life Sciences
Norwegian University of Life Sciences

Taking account of health in planning and
environmental impact assessments
Directorate for Health and Social Affairs

Kleven, Terje
European Cooperation in the field of Scientific
and Technical Research – Urban civil
engineering, Member, Technical Committee
Research Council of Norway

Motorised travel and society
Directorate for Nature Management

Democracy, governance and regionality
Research Council of Norway

Nordahl, Berit
Dispersed housing and demographics
Research Council of Norway

Local authorities and housing provision
SINTEF Building and Infrastructure

Næss, Petter
Residential location and travel in a large
Chinese city
Volvo Research Foundation

Approaches and challenges in the initial stages
Institute for Research in Economics and
Business Administration

Nørve, Siri
Planning legislation and consideration of
planning applications
Ministry of Local Government and Regional
Affairs

User survey of local authorities' administration
of housing allowance
Norwegian State Housing Bank

Ruud, Marit Ekne
Timely intervention: Knowledge Status
and Challenges in Groruddalen
Ministry of the Environment
Ministry of Local Government and
Regional Affairs
Ministry of Children and Equality
Norwegian State Housing Bank
Oslo City Council

Review of socio-cultural studies,
Sandvika and Jessheim
Akershus County Council

Saglie, Inger-Lise
Land waste in Norwegian municipalities
Research Council of Norway

Redefining rural resources
Norwegian Institute for Cultural Heritage
Research

Housing standards in high density urban
environment
Oslo City Council

Network governance – essential to good
downtown housing ?
Norwegian State Housing Bank

Schmidt, Lene
Shrinking towns
Norwegian State Housing Bank

Common Sense Densification
Norwegian State Housing Bank
Ministry of the Environment

Skogheim, Ragnhild

Evaluation of the Norwegian Cultural Heritage Fund
Ministry of the Environment

Cultural heritage and place identity
Norwegian Institute for Cultural Heritage Research

Stokke, Knut Bjørn

Evaluation of coastal zone planning by local authorities
Fishery and Aquaculture Industry Research Fund

Søholt, Susanne

Ethnic minorities, mobility and living conditions in a spatial perspective – seminar
Research Council of Norway

From Housing Bank to Competence Bank
Norwegian State Housing Bank

Ethnic minorities and housing market strategies
Nordregio

Tennøy, Aud

Evaluation of Outdoor Recreation Year 2005
Norwegian Institute for Nature Research

Tsunami Consequences
Norwegian Geotechnical Institute

National guidelines for universal design
Ministry of the Environment

Vestby, Guri Mette

Adolescents, ICT and local democracy
Ministry of Children and Equality
Ministry of Local Government and Regional Affairs

Universal design – supply side
Norwegian State Housing Bank

Kongsberg as an attractive place to live
Kongsberg City Council

Health in planning – The partnership system and local health policy
Directorate for Health and Social Affairs

Department for Socioeconomic and Territorial Studies**Bjørnsen, Hild-Marte**

Strategic decisions on Norwegian farm households
Research Council of Norway

Geographical zoning of regional and rural policy
Norwegian Institute of Transport Economics

Impacts of New Public Management (NPM) reform
Norwegian Institute of Transport Economics

Social and business analysis on Spitsbergen
Norwegian Institute of Transport Economics

Joint guidelines for evaluating out-migration of central government enterprises
Ministry of Government Administration and Reform

Brevik, Ivar

Provision of housing and services for people with intellectual disability
Norwegian State Housing Bank

Intellectual disability and social activity
The National Centre for Documentation on Disability

Development and status of Oslo City Elder Care
Norwegian Pensioners' Association, Oslo Division

Foss, Olaf

OECD territorial database
Ministry of Local Government and Regional Affairs

European Spatial Planning Observation Network – contact point
Ministry of Local Government and Regional Affairs

Literature study of the role of small and medium sized towns in regional development
Ministry of Local Government and Regional Affairs

Polycentric growth in Oslo and Akershus
Akershus County Council

Publicising ESPON results in Norway
Ministry of Local Government and Regional Affairs

Territorial cohesion and coordination in the Baltic Sea Region
Ministry of the Interior, ESPON, Luxembourg

OECD Review of Norway's regional policy
Ministry of Local Government and Regional Affairs

Study on spatially relevant aspects of tourism
EuroFutures, Sweden

Seminar for transnational exchange and networking on mountain related topics
Ministry of the Interior, ESPON, Luxembourg

Vestfold, feasibility project
Vestfold County Council

Haaland, Thomas

Skedsmo local authority – Outreach programme for children and adolescents
Skedsmo Town Council

What characterises Oslo's anti-crime efforts among children and adolescents?
Oslo City Council

Johnstad, Tom

Inland Growth – VS2010 2006
Research Council of Norway
Hedmark County Council
Oppland County Council
Arena Lettmetall

Juvkam, Dag

Mapping service regions
Ministry of Local Government and Regional Affairs

Langeland, Ove

Territorial impacts of European fisheries policy
Ministry of the Interior, ESPON, Luxembourg

Medby, Per

Local authorities and rent setting policies
SINTEF Building and Infrastructure

Universal design, economic benefits
Norwegian State Housing Bank

Economic impact of universal design of existing buildings
Ministry of Local Government and Regional Affairs

Nenseth, Vibeke

Consumers' contribution to environmental protection
Research Council of Norway

Onsager, Knut

City regions, knowledge bases and innovation support systems
Research Council of Norway

Evaluation of the ARENA programme
Samfunns- og næringslivsforskning AS

Orderud, Geir Inge

European harmonised procedures for quantification of nutrient losses from diffuse sources
Norwegian Institute for Water Research/EU

Capital circulation in an institutional perspective
Norwegian State Housing Bank

Ethnic entrepreneurship
Facet Osnabrück/EU

Skålnes, Sigrid

INTERREG IIIA Sweden – Norway 2000-2006
NUTEK Swedish Business Development Agency

Strand, Arvid

Evaluation of EIA regulations
Ministry of the Environment

Generation change in Sandnes
Sandnes Town Council

Sørli, Kjetil

Population indicators
Troms County Council

Socioeconomic barometer Sogn og Fjordane
Asplan-Viak AS

Living conditions, east central Oslo
Statistics Norway

Migration narratives Vestfold county
Vestfold Business Centre

Young families in urban municipalities
of Østfold and Buskerud – migration and
settlement patterns
Østfold County Council

Reasons for moving and migration behaviour
Ministry of Local Government and Regional
Affairs

Migration and living conditions in Groruddalen
Ministry of Local Government and Regional
Affairs

Department for International Studies in Development, Transition and Migration

Aasen, Berit

Trust Fund for Environmentally and Socially
Sustainable Development – Reference Group
Ministry of Foreign Affairs

Building capacity for development research
at the Research Centre for Applied Geography,
Vietnam
Norad

Lessons learnt from decentralisation projects
Norad

Searching for effective HIV prevention in
Sub-Saharan Africa
University of Oslo
University of Bergen

Vietnam: Governance and budget support
Norad

Support for Poverty and Social Impact Analysis
and for formulating a 'social policy'
Norad

Women and Equality – Final Report
Norad

Lessons from an evaluation of equality-
promoting development cooperation –
A synopsis
Norad

Women's Delegation from Vietnam
Norad

Aasland, Aadne

Article on Latvian social policy
Fafo Institute for Applied Social Science

NordForsk, framework agreement and
consultancy duties
NordForsk

International network for the study of
migration to and from new EU member states
Research Council of Norway

Braathen, Einar

Review of experiences with decentralisation
and poverty
Norad

Decentralisation, peacemaking and conflict
management
Ministry of Foreign Affairs

Dalfelt, Arne

2006 Conference of the International
Association for Impact Assessment (IAIA)
Ministry of Foreign Affairs

Environmental Impact Assessment –
Lessons from Africa
Norad

Grødeland, Åse Berit

Conditionality, corruption and informal
networks: an analysis of corruption in the
spheres of public procurement, party funding,
lobbying and the judiciary in the Czech
Republic, Slovenia, Bulgaria and Romania
Research Council of Norway

Informal practices and corruption in
post-conflict areas, West-Balkans
Research Council of Norway

The reintegration of Ukraine into Europe
University of Vienna

Haug, Marit

Social inclusion and nation building in Nepal
Royal Norwegian Embassy, Kathmandu

Tsunami relief – Institutional performance
in Sri Lanka
Ministry of Foreign Affairs

Social exclusion, Nepal
Social Inclusion Research Fund (SIRF), Nepal

Review of Norwegian Refugee Council
Norad

Women's role in preventing humanitarian
disasters
Norad

Holm-Hansen, Jørn

Knowledge discovery – multicultural work
in the child welfare authority
Ministry of Children and Equality

Review of Norges Vel's agricultural projects
in Kosovo and Macedonia 2002-2005
Noragric

Schou, Arild

Community based development programmes
Research Council of Norway

Tesli, Arne

Environmental Partnership Norway-Indonesia
Directorate for Nature Management

Rural-urban development imbalances in China
Research Council of Norway

Conference preparations, Haikou, Kina
Ministry of Foreign Affairs

Saudi plan implementation
High Commission for Arriyadh, Saudi Arabia

Regional disparities in China
China Institute for Reform and Development
(CIRD)

Rural land report to support farmers in China
China International Centre for Economic and
Technical Exchanges (CICETE)

Governance institutions network international
Ministry of Foreign Affairs

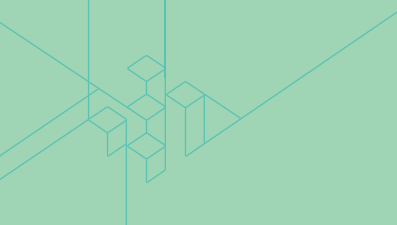
Wiig, Henrik

Land property rights in peacemaking processes
Ministry of Foreign Affairs

Business Experience Exchange Programme
Royal Norwegian Society for Rural Development

Analysis of current political and socioeconomic
situation in Latin America
Norad

Development Cooperation, agricultural
production and famine in Malawi
National Statistical Office of Malawi



**Norwegian Institute for
Urban and Regional Research**

Visiting address:
Gaustadalléen 21,
N-0349 Oslo
Postal address:
P.O. Box 44 Blindern
N-0313 Oslo, Norway
Telephone: +47 22 95 88 00
Telefax: +47 22 60 77 74
nibr@nibr.no
www.nibr.no