



Annual report 2011



NIBR

Norwegian Institute for Urban and Regional Research



Contents

Norwegian Institute for Urban and Regional Research	3
Do we need an independent research institute sector?	4
NIBR's Board 2011	6
Statement of the Board	7
Annual Accounts 2011	8
Competency Audit	9
Clients	
Research Areas	10
NIBR's Academic Activities	14
International Research	16
Information and Publication Activities	18
In-house Publications	20
External Publications	21
Academic Conferences	23

Editor:
Inger-Helene Wang Andresen

Graphic Design:
Melkeveien designkontor

Photography:
Peder Tømmervåg
Daniel Staver

Oslo 2012

Norwegian Institute for Urban and Regional Research

The Norwegian Institute for Urban and Regional Research (NIBR) is an independent social science research institute which generates and disperses research-based knowledge of practical use to decision makers and the public.

Our core competence is national and international place research; public administration and certain policy fields. By working in close proximity to practitioners and applying an interdisciplinary approach, we are able to design and deliver balanced, robust analyses.

Place refers essentially to a geographic area, but can also embrace identity and affinity. Public administration presumes knowledge of political processes, mechanisms and programmes, management and values.

Organisation

NIBR has a cross-disciplinary staff of sociologists, political scientists, economists, demographers, anthropologists, geographers, architects and civil engineers, fifty-seven researchers altogether. Of these, twenty-two have a PhD, and eleven qualifications equivalent to the highest academic grade, i.e. professorship.

All in all, NIBR employed seventy individuals in full-time positions at the end of 2011; thirty-six women and thirty-four men.

Research at NIBR

NIBR's core expertise is urban and regional research. This is a wide-ranging, cross- and multidisciplinary field of inquiry in the social sciences, and includes among other things:

Analyses of social conditions and social change in urban and rural communities, across regions, sectors and levels

- Analyses of regional development and wealth creation; housing and urban development; planning and public administration; democracy and welfare in and across local communities
- Territorial analyses aligned with studies of sustainable development
- NIBR has connections with a wide range of international institutions and bodies and the institute's international activity has grown steadily in recent years.

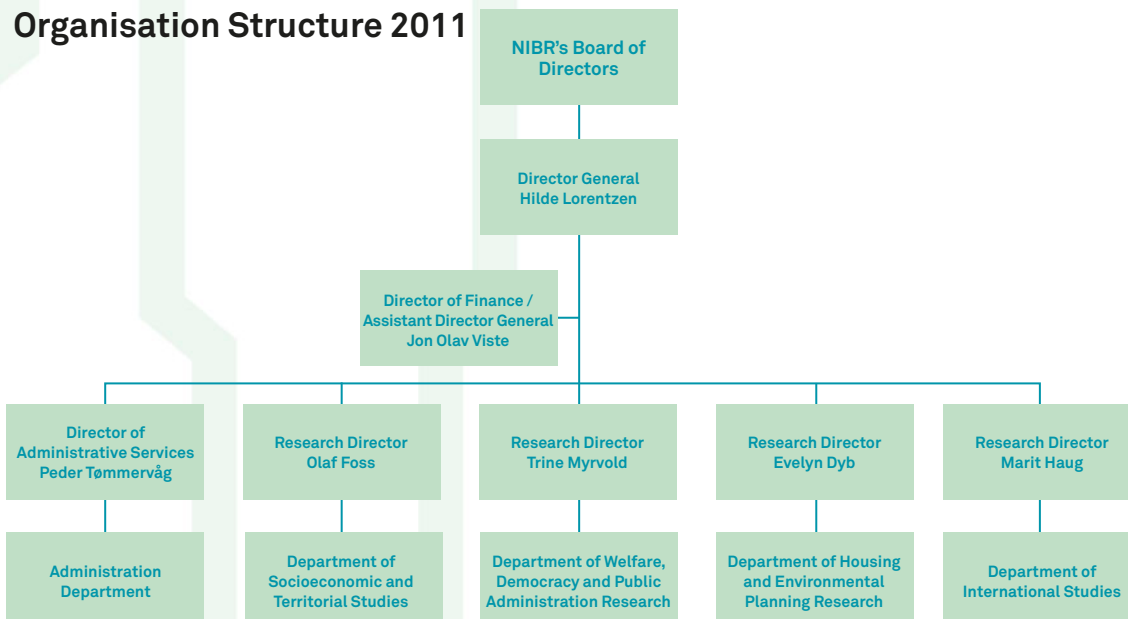
In addition to conducting research in Norway, NIBR pursues projects in:

- Southern and Eastern Africa
- South and South-East Asia
- Latin America
- Eastern Europe, Eurasia and Central Europe

NIBR is one of Norway's environmental research institutes. NIBR's expertise in the social sciences ensures a robust scientific basis for tackling environmental challenges and issues arising from social change and development. NIBR is a member of the Environmental Alliance, a strategic partnership of the seven leading environmental research institutes in Norway.

NIBR is also a partner of the *Oslo Centre for Environmental and Social Research* (CIENS - *Forskningscenter for miljø og samfunn*), a research partnership of independent research organisations and the University of Oslo. Work at the centre is facilitated by common scientific strategies and research programmes, and practical collaboration on research and communications. NIBR and the other institutes are located in the same environmentally friendly building at the Research Park at Blindern in Oslo.

Organisation Structure 2011



Do we need an independent research institute sector?

There is at present an observable sense of apprehension among researchers and leaders of the country's research institutes. Some have begun to question whether the independent research institutes can be justified and whether there is a need for them. Aren't there too many institutes? Shouldn't scientific research be the province of universities and colleges? What about the consultancy business, isn't their work as good work as what an institute can deliver? And who should enjoy the right to basic funding from Norwegian Research Council? Is it feasible – and desirable – to divide assignments between consultants, contract researchers and researchers in the higher education sector?

Competitive Environment and Regulatory Framework

The independent institutes' environment has changed significantly in recent years, changes which pull in

different directions. We can identify three concurrent processes:

- Increasing *commercialisation*: the tendering regime gives greater leeway to consultants because the government often prefers less complicated studies and documentation, and because the way competition is organised reduces the focus on research
- Increasing *administratification*: the government fosters research environments through, among other things, its own administration entities (knowledge centres)
- Increasing *academification*: universities and colleges work to consolidate their own positions by becoming increasingly active in the research contract market, at the same time as success in the independent institute sector is determined by academic criteria

These changes prompt questions relating to the size and organisation of the independent institute sector. What is the position of the Research Council and of the public authorities in this discussion?

Cooperation, Specialisation and Concentration – CSC

Apart from (relatively weak) signals conveyed by the Research Council's new basic funding system, few pointers have emanated from the political authorities and the Research Council that could help the independent institutes take bearings in the discussion over strategic choices. One signal, however, is clear. Procedures that facilitate and promote CSC – *collaboration, specialisation and concentration* – are in the wind. The mechanism has been used before – in a different sector. Wishing to promote structural change in the higher education sector, the government has allocated funds on application to so-called collaboration, specialisation and concentration processes. This has produced the desired result: bigger academic concentrations and academification of the sector. As of 2012, the independent institutes can apply for this type of funding (NOK 50 million altogether) for projects and processes promoting CSC within the sector or across the independent institutes and higher education sector – without much being said on what the concepts actually mean. The question we need to ask is, however, whether CSC is the right answer to the challenges facing the independent institutes.



Hilde Lorentzen
Instituttsjef

A New Government Green Paper on Research Due in 2013

On top of the challenges involved in initiating CSC processes, the sector has intercepted another signal; it tells us that something very serious indeed is going on. The new research green paper is being drafted and is due to be finalized in 2013. The green paper, it has been said, will pay special attention to independent institute sector. While the green paper is being drafted, several analyses of the sector are under way: institutes in the primary sector and regional research institutes are being evaluated; the Research Council has announced a project to assess the institute sector as a whole in light of CSC; and the Ministry of Education and Research has inaugurated a comparative study of the Norwegian sector and arrangements in other countries. In the meantime, there is an intense debate within the sector while strategic decisions are being made on the basis of very many unknown variables.

Good Contract Research

Society in Norway is dependent on the establishment and maintenance of centres of expertise capable of delivering robust, useful knowledge in all areas of society. The independent research institutes are important facilitators in this. Good contract research is known by its usefulness and scientific authority. Researchers need to give clients information that can be used – based on scientific theory and method. Contract research also has the advantage of being *cross-disciplinary* and *close to procedures on the ground*, and of profiting from wide-ranging but also rigorous *empirical knowledge*. Good contract research requires a flexible and competent approach to relations with clients; other users of research; the terms of the contract market; alliances and partnerships; and finally bringing research-based knowledge to a wider audience.

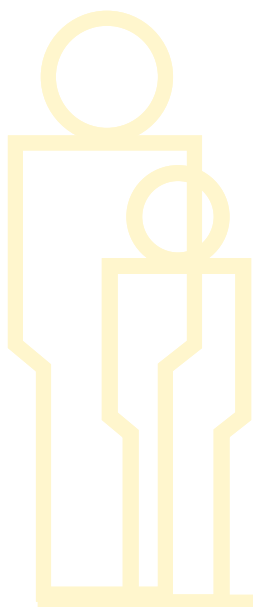
Now this research, some might say, could be undertaken just as easily at universities and other institutions of higher learning. But that's not so certain. This is because research at universities is skewed towards disciplines and professions. It hinders to a certain extent holistic analyses across disciplines and fields of inquiry. University staff have other important duties as well, including teaching, doctoral training, tutoring and basic research; they lack in other words the requisite flexibility in relations with clients, and to conduct empirical studies close to operations on the ground.

Good contract research requires specialisation in certain specific fields. The ability to specialise may not be as easy given the university sector's rather rigid regulatory environment. Specialised independent research communities will, in addition, seem attractive partners for other research communities – and also fit the bill for clients with limited research needs.

In other connections, large, wide and academically weighty research environments would be an advantage. Not least when it comes to applying for membership of EU's various research programmes. "Weighty" research communities can, however, originate from large communities within an organisational unit, but can also be created by independent, specialised research communities banding together to form (permanent) alliances.

The government and Research Council let market competition decide who gets public monies. The strategy encourages thematic and organisational similarity – and hampers sensible collaboration based on specialisation.

We appreciate the several initiatives taken by the Research Council and Ministry of Education aimed at improving our understanding of the independent institutes' possibilities and limitations. We would like to see this work proceed with an open mind, and include a comparative assessment of different models and ways forward. It is also important to engage actively with researchers, users, and clients so that the solutions reflect in the best possible way the needs and concerns of different groups.





NIBR's Board 2011:

Left to right: Dag Gjestland, Jan Sandal, Randi Kaarhus, Ottar Brage Guttelvik, Hilde Lorentzen (Director General), Frida Tømmerdal og Marit Ekne Ruud.

NIBR's board 2011

Chair	Jan Sandal	Cand. oecon
Deputy Chair	Kristin Omholt-Jensen	Senior Adviser, Ministry of Environment
Member	Dag Gjestland	Special Adviser, University of Oslo
Member	Randi Kaarhus	Research Director, Norwegian University of Life Sciences
Member	Ottar Brage Guttelvik	Chief Administrative Officer, Møre og Romsdal
First Deputy	Signy Vabo	Associate Professor, Oslo & Akershus University College
Second Deputy	Lillian Hatling	Senior Adviser, Centre of Competence on Rural Development
Staff Representative	David Jordhus-Lier	Researcher II, NIBR
Staff Representative	Marit Ekne Ruud	Researcher II, NIBR
Deputy	Frida Tømmerdal	Administrative Officer, NIBR
Deputy	Martin Lund-Iversen	Researcher III, NIBR

The Norwegian Research Council appoints NIBR's board in compliance with NIBR's statutes after nominations by the Ministry of the Environment (1 member), Ministry of Local Government and Regional Development (1 member), Norwegian Association of Local Authorities (1 member) and Norwegian Research Council (2 members). Two members are nominated by NIBR's staff.



Statement of the board 2011

The nature of the activity and where it takes place

The Norwegian Institute for Urban and Regional Research (NIBR) is an independent social science research institute that develops and disseminates research-based knowledge of use to decision makers and the public. Headquarters are located in Oslo.

Status, performance and continued activity

As of year-end 2011, NIBR's contract portfolio, human resources and financial standing were sufficiently robust to warrant continued operations and development of the institute. Access to new projects was satisfactory in 2011, allowing for a significantly improved economy than was the case during the first decade of the century.

Annual provisions for future pension liabilities in performance-based pension schemes managed by the Norwegian Public Service Pension Fund have had an adverse effect on performance over the past decade. As of 31 December 2011, accumulated capitalised pension costs amounted to NOK 5,291,738. NOK 2,139,749 of this amount was transferred in 2011. NIBR will need to transfer significant sums annually to cover pension liabilities also in the future.

After taking this into account, NIBR's 2011 result was minus NOK 26,801 after tax. While this represents a significant improvement compared with the results of earlier years, performance will need to improve even further to ensure a sufficiently robust economy at NIBR in the future.

The financial statement is submitted under the assumption of continued activity.

Working environment

NIBR's Working Environment Committee consists of six persons, three from the management and three from the academic staff. The committee is led by a member of the academic staff. The committee held four meetings in 2011 and is working to implement the institute's system of internal control (the IK Document) by submitting the document to an annual revision.

Absence due to illness was 5 per cent in 2011. No work-related injuries or accidents were recorded in 2011. NIBR's occupational health scheme takes a preventative approach to employees' health.

Equality

NIBR has a well-balanced staff of both sexes. Women accounted for 51.4 per cent of labour productivity at NIBR in 2011. The proportion of women in executive management positions was 57.2 per cent in 2011, a male/female ratio of 4:7.

NIBR uses a standard nomination process in the event of staff vacancies. The process is designed to ensure adherence to policies on equal treatment and to prevent the discrimination of vulnerable applicant groups. NIBR has also developed a set of ethical

guidelines to avert untoward conduct, including discriminatory behaviour.

External environment

Activity at NIBR has no harmful effect on the external environment. NIBR has been approved as an environmental business by satisfying the requirements of the environmental certification scheme (Miljøfyrtårn). The award is conditional on a pro-active environmental policy.

The following points are considered of importance in assessing NIBR's financial status and performance

NIBR's distributable equity was MNOK 10.7, the same figure as year-end 2010. The liquidity situation has been good throughout the year. NIBR's assets are largely tied up in tangible fixed assets and investments in NIBR's own property, CIENS eiendom KS, cf. annual accounts.

In 2005 and 2006, NOK 8,828,063 was invested in CIENS eiendom KS and CIENS eiendom AS. In 2011, receivables from other businesses were converted into shares in CIENS eiendom KS. After repurchases of issued equity, NIBR's share of share capital in CIENS eiendom KS as of 31 December 2011 was NOK 6,898,705. This sum is considered as an investment in own office space.

Capitalised pension liabilities to the Norwegian Public Service Pension Fund (*Statens Pensjonskasse*) grew during the year by NOK 2,139,749; pension liabilities are estimated to be MNOK 3.15 as of 31 December 2010. Liabilities are calculated on the basis of actuarial principles and should be seen in relation to a simulated management of pension assets, that is, as if the assets were invested in long-term government bonds.

Investments in tangible fixed assets amounted to NOK 120,935 in 2011, mainly in the form of computers and copying machines. Depreciation and amortisation expenses amounted to NOK 583,935. Technological progress will doubtless require substantial investment levels also in the years ahead,

NIBR's international activity: EU projects and agreements with public authorities and organisations abroad create a certain amount of uncertainty in terms of earnings. Because these agreements are of significant academic value to NIBR, the institute has been willing to spend some of its annual basic allocation on funding parts of these projects.

The credit risk in other respects is low, since most of NIBR's clients are government bodies in Norway. While NIBR's prospects are favourable, the institute must be prepared to operate in an increasingly competitive environment.

The deficit of NOK 26,801 (after tax), is covered by transfers from equity.

Oslo, 20 April 2012
Board of Norwegian Institute
and Regional Research


Jan Sandal
styrets leder

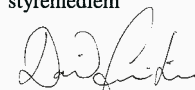

Randi Kaarhus
styrets nestleder


Dag Gjestland
styremedlem


Ottar Brage Guttelvik
styremedlem


Guri Ullveit-Moe
styremedlem


Marit Ekne Ruud
styremedlem


David Jordhus-Lier
styremedlem


Hilde Lorentzen
Instituttssjef



Annual Accounts 2011 *Highlights*

All figures in NOK 1,000

	2011	2010
OPERATING REVENUE		
Ordinary project revenue	52 912	45 851
Grants for research programmes	0	0
Annual Basic Allocation	16 939	19 022
Allocations for national tasks and infrastructure	1 215	1 015
Publication sales revenue	74	79
Other operating revenue	539	493
SUM OPERATING REVENUE	71 678	66 459
OPERATING EXPENSES		
Salaries	50 563	45 103
Direct project costs	10 967	10 535
Costs related to premises (rent, power, cleaning)	5 847	5 427
Ordinary depreciation	584	788
Other operating costs	3 966	3 594
SUM OPERATING EXPENSES	71 927	65 148
OPERATING PROFIT	(249)	1 1311
Financial items, net	175	88
OPERATING RESULT BEFORE TAX	(74)	1 399
Taxes	47	257
NET PROFIT FOR THE YEAR	(27)	1 142
BALANCE 31 DECEMBER 2011		
	2011	2010
ASSETS		
Fixed assets	10 267	10 918
Current assets	36 522	38 704
SUM ASSETS	46 788	49 621
EQUITY AND LIABILITIES		
Issued equity	5 000	5 000
Retained earnings	10 709	10 736
Pension liabilities	5 292	3 152
Current liabilities	25 787	30 733
SUM EQUITY AND LIABILITIES	46 788	49 621

Highlights from NIBR's Competency Audit for 2011

COMPETENCY AUDIT

	2009		2010		2011	
Primary employment – staff	71		71		70	
Primary employment – researchers	59		58		57	
Researcher FTEs (Full-Time Equivalents)	58		59		57	
Researchers with PhD / in per cent of full-time staff	22	37%	22	38%	23	40%

Researchers with research professor grade / in per cent of full-time staff

Clients 4% 10 17% 12 21%

NIBR offers action-oriented and decision-relevant research, studies and assessments for clients in the public and private sectors and competes in the national and international marketplace for research contracts.

NIBR has a multidisciplinary staff of:

- Sociologists
- Political Scientists
- Economists
- Demographers
- Anthropologists
- Geographers
- Architects
- Civil Engineers
- Land-use Planners

The majority of NIBR's researchers are sociologists and political scientists.

NIBR promotes multi-disciplinarity internally and in projects conducted with other institutes and bodies, and works to strengthen multi-disciplinarity by entering into alliances with other institutes.

The largest clients are:

- Norwegian Research Council
- Ministry of Local Government and Regional Development
- Ministry of Foreign Affairs, NORAD
- Ministry of the Environment
- Ministry of Health and Care Services
- Ministry of Children, Equality and Social Inclusion
- Local Governments

Funding from international sources is growing and includes:

- EU institutions and bodies
- Foreign governments
- Other international organisations

ANNUAL BASIC ALLOCATIONS AND OTHER FINANCING (IN 1,000 NOK)

	2009		2010		2011	
Annual basic allocation, Norwegian Research Council	9,152	14%	11,355	17%	12,440	17%
Strategic Institute Programmes (SIPs) from Norwegian Research Council	8,040	12%	4,956	8%	3,992	6%
Norwegian Research Council research programmes	13,590	20%	18,037	27%	15,440	21%
Ministries and subordinate bodies	23,114	35%	17,700	26%	24,654	34%
Municipal sector	6,742	10%	5,978	9%	5,552	8%
International	5,164	8%	5,070	8%	5,204	8%
Private sector	861	1%	737	1%	0	

	2009	2010	2011
Turnover	69,928	66,900	71,700
Turnover per researcher FTE	1,199	1,124	1,258
Annual basic grant per researcher in full-time position	291	281	288

Research Areas

There is a list of NIBR's publications for 2011 at the end of the report.

Projects and publications can also be accessed on www.nibr.no

Department of Housing and Environmental Planning Research



In 2011, the department had a staff of fourteen researchers; four other researchers were attached to the department to work on specific projects. Authorised absence and natural attrition, however, reduced the overall number of full-time equivalent (FTE) years of employment by a significant margin. The department recorded 9.5 FTE years in 2001. Academically, most of the social sciences, architecture and humanities are represented in the department. The department works within two basic research areas: housing, urban and place research; and planning research.

Housing, urban and place research is a complex field, comprising several research areas with clear points of contact. Over the year, the department has concentrated mostly on the sub-fields of housing and urban research. NIBR's housing research extends across the spectrum of housing studies in the social sciences: studies and evaluations of welfare and social housing policy; housing policy; and housing markets. Our portfolio in 2011 included projects where we investigated the national housing market and migration; migration motivation and housing careers; challenges facing disadvantaged groups in the housing market; balance between house prices and house construction rate; and a critical examination of the "living in a box" concept for a project about housing quality of new small dwellings.

Three major projects in the Grorud suburb of Oslo dominated urban research at the department in 2011. The first was an interim evaluation of the wide-ranging action programme for the Grorud valley; the second project concentrated on social housing issues; the third was a feasibility study of a social housing development programme. NIBR is party to a comprehensive, multi-

year Nordic project on integration and segregation of ethnic minorities. The project makes use of empirical material collected in the Grorud valley, among other places.

2011 marked the last of a four-year strategic institute programme on housing research funded by the Ministry of Local Government and Regional Development. The results were presented at an all-day seminar for government officials, researchers and practitioners in early 2011. The seminar indicated the variety of scientific work done under the auspices of the programme. The department was in charge of arranging two conferences, both lasting three days. The department organised the "Nordic Conference on Homelessness" together with the Institute of Criminology and Sociology of Law at the University of Oslo. The conference on "The Nordic City in an Open Europe" was arranged in collaboration with the Department of Sociology and Human Geography, also at the University of Oslo, and the Norwegian University of Life Sciences.

NIBR runs the Norwegian Centre for Planning and Environmental Impact Assessment under the Planning and Building Act (Centre for Planning and EIA). The centre, which was set up by the Ministry of the Environment, is an advisory network and information unit.

A one-day conference marked the end of the project "Building Bit by Bit in the Coastal Zone". The purpose of the project was to encourage a more round approach among planners to protecting important natural and fishing areas. The conference attracted a wide audience of government bodies at the national and local levels, and of researchers specialising in the field. "Promoting Coastal Communities", a project funded by the Norwegian Research Council, asks why some coastal communities apparently succeed, and are growing, where others struggle. The project combines

planning research and place research.

Researchers at the department participate actively in several international networks; they attended various scientific conferences in 2011 to present their own research.



Research Director:
cand.sociol. Evelyn Dyb

Department of Welfare, Democracy and Governance Research



The department's expertise comes from a knowledge of how the public sector is organised and how it affects political participation, political leadership, policy making, allocation of responsibilities and duties. The department studies these issues across several policy areas, especially the health and welfare services and climate and environmental policy.

The department's main areas of research are politics, political processes and current challenges facing government and political leadership. Our goal is to combine research perspectives and political questions so as to gain practical knowledge and scientific insight. The department's research projects cover all stages of policy making and policy enactment and include empirical and normative analyses. We are particularly interested in challenges facing democratic political systems and the impact of multilevel government on policy formation. We address questions affecting different administrative levels and deploy both qualitative and quantitative methods of analysis.

In 2011, researchers at the department worked on several projects studying aspects of the health and welfare sector. We conducted evaluations of major programmes targeting the municipal sector, such as *Qualifications Boost 2015* (Kompetanseløftet) and the *Reform of the Child Protection Service* (Forvaltningsreformen i barnevernet). Researchers were involved in an extended project on self-help. Work continued in 2011 on the Research Council project on management and quality of municipal nursing and care services. Several researchers worked on projects to do with services provided by municipalities to the mentally ill since the end of the national Mental Health Action Plan. NIBR was in charge of mapping and analysing reference points for public health work at the municipal and county level before a new public health law comes into force in 2012.

Researchers at the department also participated in a major Research Council project on adapting to climate change. The department is lead partner in another important Research Council project – on the implementation of EU's water directive at the local level. Researchers at the department participated in a project funded by the EU's Sixth Framework Programme on how several different knowledge types can be utilised to promote sustainable urban and regional growth.

Working with other research institutes, NIBR is studying the impact on democracy of the electronic voting trial conducted in connection with the 2011 local elections. NIBR's role in the project is to analyse whether coverage of the trial in the media affected voters' confidence and participation in the trial.

The department has also been involved in research projects addressing processes at the regional and local levels, including several projects aimed at developing and discussing the regional application of foresight methodology. Researchers at the department conducted a project on county governors' coordination of governmental scrutiny of local authorities.



Research Director:
cand.polit.
Trine Monica Myrvold



Department of International Studies



The department studies politics, governance and how people mobilize and organise in civil society organizations. Our research inquires in particular into how local authorities and communities deal with the challenges of climate change, natural resource management and health, and how self-government at the local level can work to promote inclusive and fair societies. What is done, for example, to ensure women's inclusion in democratic processes, the inclusion of ethnic, religious and caste minorities, and of deprived areas (slums)? We conducted in 2011 research projects in Russia, Ukraine, Brazil, Peru, Democratic Republic of Congo, South Africa, Tanzania, India, Nepal, Bhutan and Vietnam.

Several projects are located in rapidly developing cities and investigate connections between democratic innovation and poverty alleviation and how major cities tackle climate vulnerability. The studies in Cape Town, Rio de Janeiro, Sao Paulo, St. Louis, Dar es Salaam and Mumbai are conducted together with European and local research institutions.

A long-standing area of research at NIBR is the study of *HIV/AIDS* prevention by public authorities, civil society organisations and international organisations working in concert, and how differences in governance models affect response. Our health research examines the role of institutional strategies, participation and rights in ensuring an effective response to the challenges of prevention, care, and treatment of the HIV/AIDS epidemic. We study these issues in eastern and southern Africa and in Russia.

In the area of climate change, we focus on measures facilitating *adaptation to climate change*, and how they are funded, managed and implemented from the global to the local levels. For example through a large, collaborative project in India we study initiatives addressing climate change in vulnerable cities and rural areas, and are particularly concerned with actions initiated by the authorities and how they match communities' own strategies.

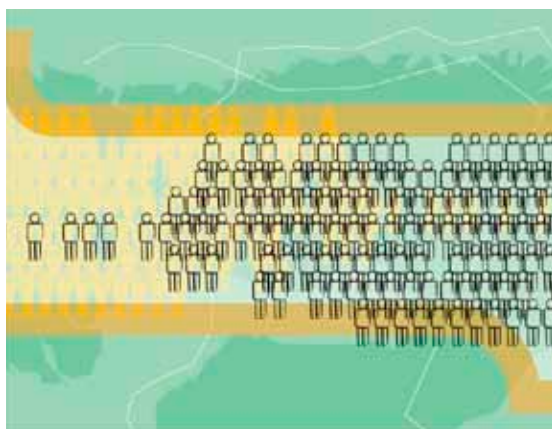
Gender and equality is central to the work of the department and our focus is on how women organize and participate in civil society organizations and in politics, and on how governance policies and reforms impact on women's status and rights, for example how land reforms affect men and women differently.

We continued our work on civil society organisations such as church networks in the Democratic Republic of Congo, grass roots movements in Nepal, indigenous peoples' organisations in Russia, trade unions in Norway, and Norwegian aid organisations. Our focus is on their role in mobilization, advocacy and service delivery. In addition to research, we performed several evaluations and reviews on behalf of NORAD, including university collaboration in Tanzania and UNICEF's work on behalf of women and children in Nepal.



Research Director:
Ph.D. Marit Haug

Department of Socioeconomic and Territorial Studies



The department conducts research and studies in Norway and abroad. This includes regional economic and regional demographic studies, integrated studies of the regions and of the dynamics of regional development. International comparative studies of territorial conditions, dynamics and trends, are of central importance. The department also works on issues arising from the relationship between nature and society. Internationally, the department is engaged in projects throughout Europe, in China and Saudi Arabia

The department also undertakes evaluations, perspective analyses and assessments of territorial and economic effects and impacts of social change and policies at various levels. We also study welfare sectors and social policy issues, regional and local government economy, and economic aspects of the housing sector and housing market.

The department has expertise and experience in the following core areas:

- *Regional development* (focusing on economy, industries, policies) includes studies and competence building in the fields of (i) industrial development and regional-economic processes; (ii) interplay between local/regional resources and economic growth; (iii) innovation and growth in industries, industrial environments and clusters; (iv) significance of sectoral and regional policy measures
- *Structure, functions and change of the system of human settlement* (focusing on demography, place, living conditions) includes studies and competence building in the fields of (i) regional-demographic processes, migration and choice of residence in a time-geographic perspective; (ii) regional decisions, delimitation and formation; (iii) promoting functionality/attractiveness of places, local communities and centres; (iv) integrated approach to place and area development
- *Climate, environment, sustainability* (focusing on distribution, fairness and justice, policy measures,

planning) includes studies and competence building in the fields of (i) climate change, distribution and social justice; (ii) local and regional effects of climate change and climate policy; (iii) attitudes, plans and measures at the local/regional level

In addition to these principal areas of study, the department has considerable expertise in the field of economic analysis of policy sectors and areas adjacent to established thematic areas.

The department is an active participant of joint Nordic and European projects, particularly in the area of comparative territorial research into issues within all three core areas. In the field of applied regional and territorial studies, the European research programme ESPON (European Observation Network for Territorial Development and Cohesion) has remained a central pillar since 2002. The department is the Norwegian EPSON contact point (ECP).

The department works closely with other research communities and consultancies at home and abroad from project to project. Some stable partnerships have evolved over time. They include the department's active involvement in the PANDA Group (county councils, ministries and relevant research communities) and one of the department's researchers has for several years headed PANDA's user forum.

Several of the department's researchers are active members of the Regional Science Association, in both the European and Nordic sections, by holding office and contributing to annual conferences i.a. by sharing arrangement responsibilities.

The Nordic/European cooperation network includes a large number of universities, research institutes and researchers. Another important international network area is China. This network presently includes a fair number of well reputed Chinese universities and research communities in several provinces, along with governmental bodies at the national and provincial levels.



The department accounted for nearly 17 full-time equivalent man-years in 2011. The twenty researchers are economists, human geographers, sociologists, political scientists, social anthropologist, civil engineer and demographer.

Research Director:
Cand.sociol. Olaf Foss

NIBR's Academic Activities

In addition to the research departments, NIBR's scientific work takes place in the form of strategic institute programmes (SIPs) and thematic groups. These are funded under the Norwegian Research Council's basic allocation.

Strategic institute programmes account for an important part of NIBR's efforts to ensure academic excellence and facilitate an international perspective in the institute's main fields of activity. The programmes involve both theoretical and empirical studies, as well as extensive work to turn research results into scientific articles. The institute programmes are also intended to provide a vehicle for individual researchers interested in specialising; to establish and expand research networks; and to strengthen scientific collaboration at home and abroad.

SIS 2011–2014

Challenges for Governance and Planning in Cities and Municipalities

What sort of challenges does climate change represent for urban planning and development, in Norway and elsewhere? How are climate changes likely to affect public health, under different degrees of vulnerability? And how can climate change be addressed in terms of politics and governance? These are some of the principal questions of NIBR's strategic institute programme "Challenges for Governance and Planning in Cities and Municipalities", which began in 2011 and will last until 2014. It is NIBR's most comprehensive effort to date to widen our expertise and raise awareness. It is meant to strengthen the institute as a provider of knowledge and analyses of the new challenges facing society as a result of global warming, rapid urbanisation and associated social and environmental challenges.

This strategic programme builds on NIBR's accumulated resources in the social sciences, bringing them to bear in new thematic areas. The programme comprises six thematic work groups. The first is called SIS SOUTH, and builds on NIBR's wide-ranging and long-standing engagements in Africa. This part of the world is undergoing rapid urbanisation and uncontrolled urban growth, with poor living conditions and high vulnerability. Rapidly expanding informal "slums" lie outside the remit of planning authorities. No public utilities are laid on, such as running water and waste collection, and public services are usually out of reach or don't exist at all. At the same time, slums frequently grow in areas with a high risk of flooding and other climate-related problems. Given this general picture, SIS SOUTH studies climatic vulnerability, slum improvement, and sustainable urban development in African cities.

The second work group inquires into the importance of knowledge and organisation for urban development processes in the

field of climate adaptation, public health and social differentiation. The project explores the types of knowledge used by planners and policy makers in these three areas, and asks how application of the different types of knowledge has changed over time. The project also looks into how efforts within the three areas are organised and the effect of this organisational set up on which types of knowledge are invoked. Finally, the project will examine the application of knowledge and the significance of organisational set up for policy development (output) in the three policy areas. The project's design is comparative inasmuch as the application of knowledge, organisation and their respective impact on output in the individual policy areas will be compared.

The starting point for the third work group, MISARIS, is the increased pressure on essential city infrastructure and greater need for innovative solutions in areas such as energy and transport, waste disposal and water supply, caused by climate changes and urbanisation processes. Promoting sustainability and smarter cities requires innovation and new technological solutions when it comes to preventing and adapting to climate change. The work group will therefore examine innovation processes connected with new climate-related technological solutions in key infrastructure in some of the largest cities in Norway. The analysis will determine how innovation processes are organised, how they perform, and what enables or disables innovative solutions in different sectors and in different cities. Innovation processes can evolve differently in different sectors and different urban systems. By learning more about these processes and the conditions under which they are developed, cities should be better able to tackle the infrastructure challenges arising from urbanisation and climate change.

To help it put the EU's Water Directive into effect, Norway created a new and relatively extensive management body, with a mandate to achieve acceptable environmental standards in rivers and lakes, groundwater and coastal waters. Management procedures are ecosystem-based in that jurisdiction of the different river basin district authorities is coextensive with the drainage basins. Because many of the most important aspects of climate adaptation involve water, it has provided the focal point for the establishment of a dedicated work group – SIS WAPABAT – with a view to examining the new water management system's handling of the many problems of coordination associated with the effects of climate change on water.

The sixth and final work group is called RUSSBYKLIM; it takes the modus operandi of the institute programme into a Russian context. Russia has a powerful and extensive apparatus in place at the national and regional levels to deal with natural disasters. However, critics of the UN Climate Panel in Russian academic and government circles tend to be more vocal and

prominent than in most of the other European countries. That said, the fact of climatic change is acknowledged. Many climate studies in Russia investigate changes in the natural environment as such, and tend to focus on unpopulated areas. NIBR's work group will depart from this pattern by exploring climate change in cities. The capacity of Russian cities to adapt to climate change is one of the main issues of the study. The work group will examine the concerted actions of local authorities and government bodies at various policy levels, in different sectors, and in business and civil society to facilitate adaptation to climate change at the local level.

Thematic groups

NIBR's scientific efforts proceed partly in each individual department and partly in the thematic groups. Thematic groups are composed of researchers from two or more departments.

The groups have two main purposes:

- provide a setting for scientific discussion and specialisation, learning and innovation across departments; ensure NIBR delivers research of the highest scientific standards
- provide a setting where the input and expertise of researchers from several departments are needed to assist in the drafting of strategically important, multidisciplinary funding applications and bids for research contracts

NIBR gave priority to the following thematic groups in 2011:

- **Democracy** – established to strengthen expertise at NIBR in a) democracy-promoting measures and pilot schemes in Norway; b) democratic features of multiethnic societies (ethnically complex states, migration, indigenous peoples); and c) international democracy support.
Coordinator: Dr.polit. Jørn Holm-Hansen
- **Cities** – mandated to strengthen expertise at NIBR on cities, urbanisation and place appeal. The theme challenges our ability to combine different areas of NIBR's expertise: migration and living conditions data; sociocultural place analysis; local democracy and multilevel governance in major cities; the city as sites of inclusion and exclusion; the socioeconomic role of the city and urban housing markets; and studies of sustainable development in the South.
Coordinator: Ph.D. David Jordhus-Lier
- **Governance** – tasked with maintaining NIBR's position as a leading centre of governance research in Norway. As a field of study, governance invokes several issues of concern to the social sciences such as legitimacy, democratic participation, policy performance and political steering. NIBR's governance research can be placed under the following main headings: governance challenges in local democracy; multilevel governance, governance challenges in democracy building in the South and East, and governance challenges in regional development.
Coordinator: Cand.polit. Erik Henningsen

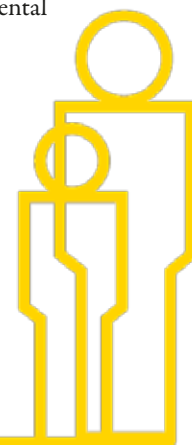
- **Migration and Integration Research (MIR)** – shall encourage learning at NIBR about the challenges facing politicians and policy makers, government officials and members of civil society arising from a changing multiethnic society. Key questions in this research concern the effect of a changing society on relations between the majority population and minorities; immigrants' living conditions and how they organise themselves; indigenous peoples and national minorities. Trans-national perspectives and relations between sending and receiving countries are of key importance in NIBR's research in the field.
Coordinator: Dr.polit. Susanne Søholt

- **Settlement Systems** – shall enhance NIBR's expertise on a) demography, including migration patterns, choice of residence and migration motives; b) places as arenas of people's level of living, place development and attractiveness; c) processes connected with the housing, labour and service markets; d) tourism industry; e) housing preferences and housing motivation. A major part of NIBR's place research fall within the scope of this thematic group.
Coordinator: Dr.art. Marit Ekne Ruud

- **Climate and Environment** – aimed at enhancing NIBR's expertise on climate change, i.e. what can be done to reduce emissions of greenhouse gases and prepare contingency plans for extreme weather events. Work is done on projects addressing local and international challenges, and not least challenges of international scope, as in China, India and Africa, among other places.
Coordinator: Cand.polit. Kjell A. Harvold

- **Health, Including Public Health** – shall provide a setting for scientific deliberation in connection with application drafting, while being active in competence and network building.
Coordinator: Dr.polit. Marit K. Helgesen

- **Place Research** – shall strengthen expertise at NIBR in the study of places' distinguishing features, characteristics and capacity to identify and assess the potential for place development across multiple dimensions. Analyses of place identity and place development include factual dimensions, attitudes and conceptions that impact the developmental possibilities of the place.
Coordinator: Cand.sociol. Guri Mette Vestby



International Research

All of NIBR's departments work with international partners and we conduct research in countries in Europe, Asia and Latin America.

NIBR's unique advantage lies in our capacity to combine knowledge of Norwegian society in areas such as regional research, government administration and democracy with language skills and knowledge of the political, social and cultural conditions of other countries.

This allows us to design comparative projects, but also to draw on research in Norway to aid our international research. Our international research is based on field work often at the community and local level and independent data collection of qualitative as well as quantitative data. This approach gives NIBR researchers unique insight into ongoing processes of institutional reform and social change.

NIBR is involved in research partnerships with numerous universities and research institutes in the Nordic countries and the rest of Europe and in all the so-called BRIC countries, i.e. Brazil, Russia, India, China and South Africa. In 2011 we had research agreements with research institutions the Democratic Republic of the Congo, Nepal, Peru, Philippines, Sri Lanka, Tanzania, Ukraine, Vietnam and Saudi Arabia.

Researchers at NIBR are proficient in several languages, including English, Spanish, Portuguese, French, Russian, Sámi, Polish, Latvian, German, Hindi, and several eastern European languages. This provides for a thorough understanding of the countries where we conduct research.

NIBR participates in several European research networks, including

- The EU venture European Co-operation in the Field of Scientific and Technical Research (COST)
- European Urban Research Association (EURA)
- Nordic Housing and Urban Research Partnership
- European Network for Housing Research
- Nordic Homelessness Research Network
- European Federation of National Organisations Working with the Homeless (FEANTSA)
- Regional Science Association (RSA)
- European Association of Development Research and Training Institutes (EADI)

In addition to the international research mentioned under the research activity of each department, NIBR has a broad portfolio of EU-funded projects, indicative of the importance NIBR places on international research collaboration.

- We are party to two projects funded under the Seventh EU Framework Programme:
- "Urban Chances – City Growth and the Sustainability Challenge" compares major cities in India, South Africa, Brazil and Peru. NIBR's researchers focus here on mobilisation against urban social inequality and citizen participation in Brazil and South Africa.

On the basis of empirical studies in five African cities, the project "Climate Change and Urban Vulnerability in Africa" (CLUVA) aims to develop knowledge and methods for managing climate risk, reducing social vulnerability and strengthening climate adaptation capacity and urban resilience at different levels. The project involves studies in Addis Ababa, Dar es Salaam, Douala, Ougagougou, and St. Louis (Senegal).

NIBR has been involved in the European research programme ESPON (European Observation Network for Territorial Development and Cohesion) since 2002. Membership gives NIBR access to important European networks of research communities and researchers in the field of territorial studies and planning research. The programme also provides access to important European research infrastructure, a common scientific platform in the form of a territorial database, cartographic tools, methodologies / models, typologies, concepts etc.



With the help of comparative transnational studies of European regions, the programme is geared to generate research-based knowledge of use in territorial development policy making and planning in Europe. At present, 31 countries have signed up to the programme. It is funded in part by the European Regional Development Fund (ERDF).

NIBR acts as the national contact point for ESPON and is party so far to six of the nearly fifty ongoing projects, and is lead partner in two of them.

See www.espon.eu for details.

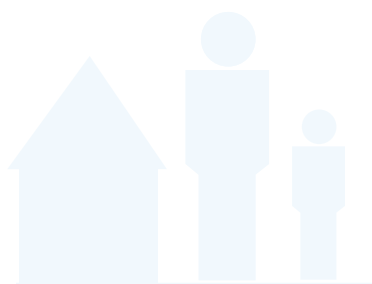
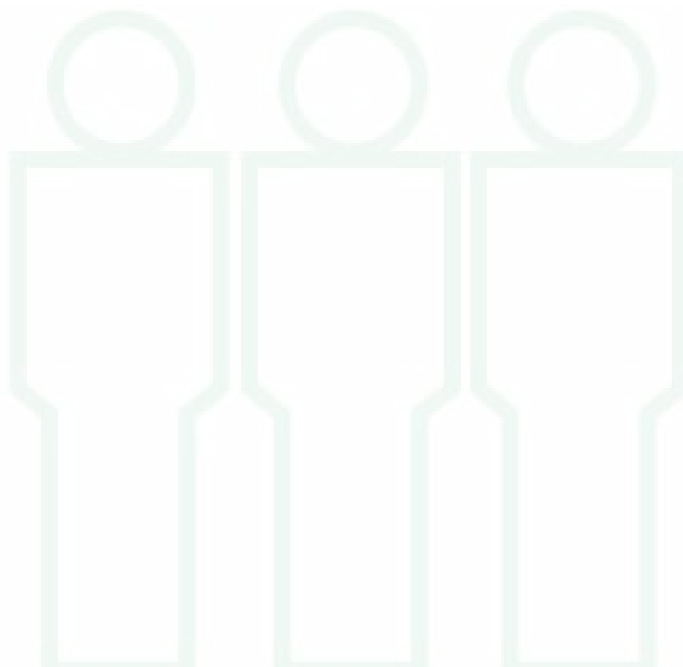
NIBR participates in the following Interreg projects:

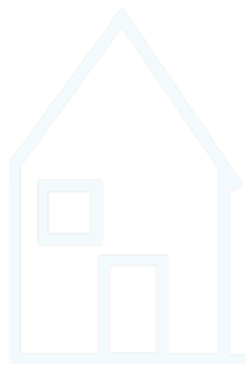
- “North Sea Skills Integration and New Technologies”, focusing on climate change and aspects of urban and housing planning where water presents a particular challenge (Interreg IVB North Sea Programme)
- “Climate Change: Impacts, Costs and Adaptation in the Baltic Sea Region”, focusing on challenges facing regions and municipalities in connection with the most urgent climate changes (Interreg IVB Baltic Sea Programme)

The project “Nordic Welfare States and the Dynamics and Effects of Ethnic Residential Segregation (Nodes)” explores links between welfare state policies and the conditions underlying ethnic residential patterns, and the effects of ethnic segregation in four Nordic cities. The project is financed by New Opportunities for Research Funding Co-operation in Europe (Norface), a transnational partnership of twelve European research councils.

NIBR has participated continuously in OECD’s scientific work on rural and territorial indicators and analyses; from 1999 as Norwegian delegate/ contributor to the “Working Party on Territorial Indicators” (WPTI), one of three working groups under the Territorial Development Policy Committee.

This working group is responsible for, among other things, the periodic publication of *OECD Regions at a Glance*. Norway’s ongoing joint project with the Chinese Academy of Social Science in Beijing as lead partner, “Capacity Building for Regional Sustainable Development: Evaluation, Policy Making and Planning”, also has a comparative aspect (as one of its elements) in that Chinese regions are compared with regions in Europe and OECD countries. OECD contributes to the project





Information and Publication Activities

NIBR has a national responsibility to provide information in an accessible and user-friendly form. Academic staff are active participants in public debates on issues of relevance to the Institute's research priorities. NIBR endeavours to ensure that information is tailored to the needs of the general public, the media, clients, the scientific community and readers of national and international periodicals and journals.

In 2011 NIBR created the information circular *NIBRnå (NIBR Today)*, which is sent to more than a thousand recipients. NIBR's web pages were also redesigned, making them easier to navigate and use.

NIBR's Administrative Services Department, which also runs NIBR's library, is in charge of information management.

Reports, Articles etc.

Most research projects are reported in one or more of NIBR's own publications. In 2011, NIBR published thirty-three reports, sixteen working papers and three joint reports.

Reports and joint reports are issued in print format and electronically; working papers are published electronically as pdf-files only and can be accessed from our homepage. Reports and joint reports have summaries in English and Norwegian; working paper summaries are in Norwegian only.

A list of reports, joint reports and working papers can be found at www.nibr.no: click on *Publikasjoner* (Publications).

In addition to NIBR's in-house series, researchers were responsible for a significant body of work. Twenty-eight articles and anthologies were published in peer reviewed journals and nine in other academic journals, compendia and article collections. Researchers wrote and/or edited six externally published books and/or project reports. One scientific monograph was published, and researchers had twenty-three opinion pieces, reviews and comments etc. published in journals and the popular press.

Regional Trends

NIBR publishes *Regional Trends*, a journal dedicated to various aspects of regional research. In 2007, a peer review system was put in place. The journal is supported economically by the Ministry of Local Government and Regional Development. Earlier editions of *Regional Trends* are available at www.nibr.no and click on *Publikasjoner* (Publications).

Academic Conferences

National and international conferences provide a vehicle for researchers to make their findings and analyses more widely known to important audiences. NIBR's scientific staff read twenty-two papers at international and national conferences in 2011 and held forty lectures and talks at Norwegian and international seminars and conferences.

NIBR organises and hosts conferences and seminars alone and in collaboration with other institutions.

The following arrangements were held in 2011.

- NIBR og EADI, NFR og UD: Urban Governance, Vulnerability and Resilience in Cities in the South, Oslo 17.3.2011 (Berit Aasen)
- NIBR and European Association of Development Research and Training Institutes, Norwegian Research Council and Ministry of Foreign Affairs: Urban governance, vulnerability and resilience in cities in the South, Oslo 17 March 2011 (Berit Aasen)
- NIBR and Rassvet (Arkhangel'sk): Challenges in HIV/AIDS prevention: Experiences from Russia and Norway, Oslo 29.3.2011 (Aadne Aasland)
- NIBR and China Institute for Reform and Development (CIRD): Prioritizing the Growth of People's Income and Wealth and Consumption Driven Growth Required Breakthroughs in Reforming Income Distribution in China, Haikou, Kina 9–11 December 2011 (Arne Tesli, Torunn Kvinge)
- NIBR, UMB, UiO: NSBB konferansen: Den nordiske storbyen i et åpent Europa, Oslo 21.-23.9.2011 (Evelyn Dyb m.fl.)
- NIBR, Norwegian University of Life Sciences, University of Oslo: NSBB [Nordic Urban and Housing Research Network] conference: The Nordic City in an Open Europe, Oslo 21–23 September 2011 (Evelyn Dyb et al.)
- NIBR og Oslo Kunnskap: Oslo – Innovativ og attraktiv? Næringsutvikling og innovasjon i Oslo i et internasjonalt perspektiv, Oslo 18.11.2011 (Ove Langeland)

- NIBR and Oslo Knowledge: Oslo – Innovative and Attraktiv? Business development and innovation in Oslo in an international perspective, Oslo 18 November 2011 (Ove Langeland)
- NIBR: Bit for bit utbygging i kystsonen – konsekvenser for marin natur og næring: sluttseminar, Oslo 31.10.2011 (Martin Lund-Iversen)
- NIBR: Bit by Bit. Building in the Coastal Zone – Impact on Marine Wildlife and Businesses. Wrap-up seminar, Oslo 31 October 2011 (Martin Lund-Iversen)
- NIBR and Institute of Population and Labour Economics, Chinese Academy of Sciences: Regional Classification Systems for China, Beijing, China 11–14 April 2011 (Geir Orderud)
- NIBR, World Bank and Norad: Climate Change in North African Cities, Oslo 31 October 2011 (Trond Vedeld)

Academic Meetings and Briefings

Academic Forum (Faglig Forum) provides an opportunity for interested members of the public to take part in informed discussions on topics associated with research at NIBR.

There were five such meetings in 2001:

- The Dwelling: Welfare Prerogative, Commodity and Neighbourhood [Boligen: velferdsgode, markedsware og nabolag]
- Book Launch: “From Post War Reconstruction to Social Planning” [Boklansering: ”Fra gjenreisning til samfunnsplanlegging”]
- Survey of Mayors: “Think Globally – Act Locally?” [Ordførerundersøkelsen: ”Tenke globalt – handle lokalt?”]
- Adapting to Climate Change in the Cities – A Global Look at Extreme Weather and Vulnerability [Klimatilpasning i byer – et globalt blikk på ekstremvær og sårbarhet]
- Knowledge as Means to an End. How to Make Research Practicable [Kunnskap som verktøy: Hvordan kan forskning bli anvendelig?]

Information and Publication Activities	2009	2010	2011
Articles published in peer-reviewed journals and anthologies	24	23	29
Scientific monographs	1	3	1
Articles published in other journals and books	9	19	9
Books and other publications	6	5	6
Opinion pieces and book reviews	8	12	23
NIBR Reports	37	31	36
NIBR Working Papers	19	12	16
Papers read at scientific conferences	34	41	23

NIBR's Library

NIBR's library contains works of interest and relevance to research at the Institute. The library underwent a “spring clean” in 2001, bringing the total number of titles down to about 12,000. The library subscribes to about 125 journals, of which most are also available in electronic format. The library holds twelve printed newspapers. The library has access to the full-text database *Retriever* for Norwegian papers.

Apart from the researchers' use of the library's own collections, the library offers other services such as procuring literature, ordering copies of articles, and providing assistance with searches in the databases and other sources of information on the Internet. The library is party to the consortia agreements on access to the international base for article references ISI Web of Science and *Retriever* for Norwegian newspapers and media.

Starting in 2011, the library registers and reports publications of scientific material to CRISStin (Current Research Information System in Norway)/Norsk vitenskapsindeks [Norwegian Science Index].

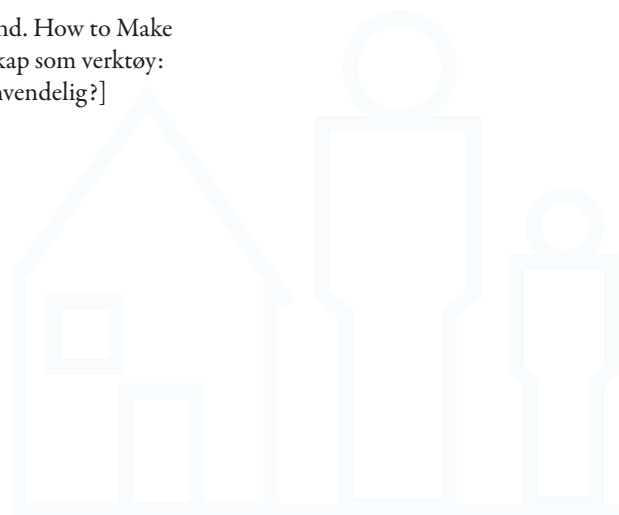
Contact information:

Chief Librarian:

Inger-Helene Wang Andresen
inger.w.andresen@nibr.no

Director of Information:

Elisabeth Tøtte Hansen
elisabeth.hansen@nibr.no
 NIBR publications can be ordered at nibr@nibr.no



NIBR'S In-House Publications 2011

Publications are shown in alphabetical order of project leader's surname

NIBR Reports

Barlindhaug, Rolf and Berit Nordahl

Price response of the home building industry. Too many things to take into account in housing policy?

NIBR Report 2011:31

Barlindhaug, Rolf, Evelyn Dyb and Katja Johannessen

Municipal and macro-economic effects of social housing policy – Estimates based on constructed client histories

NIBR Report 2011:8

Barlindhaug, Rolf, Katja Johannessen and Torunn Kvinge

Housing careers of start-up loan applicants

NIBR Report 2011:15

Bjørnsen, Hild-Marte and Steinar Johansen

Community and Place Report, Svalbard 2011

NIBR Report 2011:26

Dhungel, Dwartika Nath, Marit Haug, Mahendra Raj Sapkota and Pradyuman Prasad Regmi

Decentralization in Nepal: Laws and Practices

NIBR report 2011:23

Dyb, Evelyn, Camilla Lied and Helge Renå

Social Housing Development Programme, Grorud, Oslo

NIBR Report 2011:22

Gundersen, Frants, Frode Kann and Roar Samuelsen

Møre og Romsdal – A tourist county with ambition

NIBR Report 2011:2

Gundersen, Frants and Knut Onsager

Regional innovation and business development

NIBR Report 2011:12

Harvold, Kjell

Think globally – Act locally?

NIBR Report 2011:10

Holm-Hansen, Jørn, Hysen Bytyqi and Samir Muhamedagic

Norwegian Support to Agriculture and Agri-Business in Bosnia-Herzegovina and Kosovo

NIBR Report 2011:6

Indset, Marthe and Trond Tjerbo

That difficult dependency

NIBR Report 2011:7

Indset, Marthe, Katja Johannessen and Susanne Søholt

Globalisation and housing policy

NIBR Report 2011:18

Indset, Marthe, Jan Erling Klausen, Eivind Smith and Marte Winsvold

Coordinating state oversight and system audits as a method of oversight

NIBR Report 2011:28

Johannessen, Katja and Evelyn Dyb

For as long as it takes

NIBR Report 2011:13

Johannessen, Katja and Evelyn Dyb

Reintegrating offenders into the community. An annotated bibliography

NIBR Report 2011:20

Juvkam, Dag, Frode Kann, Jon Inge Lian, Roar Samuelsen and Vidar Vanberg

Metropolitan regions' functional borders

NIBR Report 2011:16

Kleven, Terje, Jon Naustdalslid and Carolina Björn

Promoting planning research and planning education in Norway

NIBR Report 2011:14

Kvinge, Torunn and Per Medby

Social housing policy in Norway

NIBR Report 2011:3

Medby, Per

The 2009 restructuring of the housing allowance system

NIBR Report 2011:11

Medby, Per and Kim Christian Astrup

Long-term tenants in the Norwegian housing market: An empirical analysis based on the 2007 living level survey

NIBR Report 2011:27

Medby, Per and Arne Holm

Tenants' Organisation in Norway

NIBR Report 2011:29

Myrvold, Trine Monica, Geir Møller, Hilde Hatleskog Zeiner, Ingvild Vardheim, Marit K. Helgesen and Torunn Kvinge

That tricky thing, coordinated action

NIBR Report 2011:25

Nordahl, Berit, Rolf Barlindhaug, Eli Havnen, Siri Nørve and Alv Skogstad Aamo

Developer-controlled urban development?

NIBR Report 2011:21

Nørve, Siri

Participation and accessibility

NIBR Report 2011:5

Onsager, Knut, Frants Gundersen, Lene Schmidt, Kjetil Sørli and Guri Mette Vestby

Viable coastal communities: Place and business development in the municipality of Sandøy

NIBR Report 2011:24

Ruud, Marit Ekne and Guri Mette Vestby

Development of Søndre Nordstrand

NIBR Report 2011:19

Ruud, Marit Ekne, Jørn Holm-Hansen, Vibeke Nenseth and Anders Tønnesen

Mid-term Evaluation of the Grorud Valley Action Plan

Joint Report NIBR/Institute of Transport Economics 2011

Schmidt, Lene, Jon Guttu, Lillin Cathrine Knudtson

Public participation in municipal planning in Oslo

NIBR Report 2011:1

Schmidt, Lene, Knut Bjørn Stokke, Knut Onsager, Frants Gundersen and Kjetil Sørli

Viable coastal communities: Community and business development in the municipality of Lurøy (Northern Norway), with particular attention to community of Lovund

NIBR Report 2011:30

Skogheim, Ragnhild, Lene Schmidt and Guri Mette Vestby

Place analysis for the municipality of Svelvik

NIBR Report 2011:32

Skålnes, Sigrid

Government management of the reindeer industry

NIBR Report 2011:4

Skålnes, Sigrid, Frants Gundersen, Ragnhild Skogheim and Kjetil Sørli

Long-term impact of national development programmes

NIBR Report 2011:17

Vanberg, Vidar

Centre development towards 2020

NIBR Report 2011:9

NIBR Working Papers

Aasen, Berit and Aggripina Mosha

Mid-term Review of the NUFU sub-programme

Women's Rights and Gender Equality

NIBR Working Paper 2011:115

Aasland, Aadne and Guri Tyldum

A note on sampling procedures for the hotel survey

NIBR Working Paper 2011:105

Barlindhaug, Rolf

Housing grant for first-time buyers

NIBR Working Paper 2011:112

Brevik, Ivar and Lars Nygård

Status and trends in Oslo's care of the elderly 2001–2010

NIBR Working Paper 2011:113

Harvold, Kjell

Climate adaptation, planning and action

NIBR Working Paper 2011:109

Helgesen, Marit K., Inger Marie Stigen and Trond Tjerbo

Work of County Governors and local authorities to implement the "Qualifications Boost 2015" action plan

NIBR Working Paper 2011:107

Johannessen, Katja and Torunn Kvinge

Housing and population trends in the Oslo suburb of Linderud

NIBR Working Paper 2011:101

Jordhus-Lier, David, Hege Hellvik, Julia Loge and Anders Underthun

On-site workplace survey and internet-based questionnaire for hotel workers in Oslo and Akershus

NIBR Working Paper 2011:106

Knudtson, Lillin Cathrine

Auditory perceptions of sounds in spaces and areas by the visually impaired

NIBR Working Paper 2011:102

Knudtson, Lillin Cathrine and Per Medby

Universal designed in relation to social and economic sustainability

NIBR Working Paper 2011:110

Onsager, Knut and Frants Gundersen

Statistics on R&D and innovation

NIBR Working Paper 2011:111

Stigen, Inger Marie and Trond Tjerbo

Evaluation of the "Qualifications Boost 2015" action plan

NIBR Working Paper 2011:108

Vanberg, Vidar

Retail and centre development

NIBR Working Paper 2011:114

Vanberg, Vidar

Business, trade and service
NIBR Working Paper 2011:104

Vedeld, Trond

Green economy and Rio+20
NIBR Working Paper 2011:118

Willumsen, Berit (editor)

NIBR Summaries 2010
NIBR Working Paper 2011:103

Joint Reports**Medby, Per, Karine Denizou and Jon Christophersen**

Survey of statistics on universal design and accessibility
Joint Report NIBR/SINTEF 2011

Ruud, Marit Ekne, Jørn Holm-Hansen, Vibeke Nenseth and Anders Tønnesen

Interim evaluation of the Grorud Valley Action Plan
Joint Report NIBR/Institute of Transport Economics 2011

Sørli, Kjetil and Ann Ragnhild Broderstad

Migrating to towns and cities from rural areas populated by Sámi
Joint Report NIBR/University of Tromsø 2011

External Publications in 2011

Scientific articles in journals and series

Aasland, Aadne and Marit Haug: "Perceptions of Social Change in Nepal: Are Caste, Ethnicity, and Region of Relevance?" *Journal of Asian and African Studies*, 2011, 46(2): 184–201
ISSN 0021-9096

Atkinson, Rob and Jan Erling Klausen:

"Understanding sustainability policy: governance, knowledge and the search for integration", *Journal of Environmental Policy and Planning*, 2011, 13(3): 231–251
ISSN 1523-908X

Berg-Nordlie, Mikkel: "Need and Misery in the Eastern Periphery: Nordic Sámi Media Debate on the Kola Sámi", *Acta Borealia*, 2011, 28(1): 19–36
ISSN 0800-3831

Berg-Nordlie, Mikkel: "Striving to Unite: The Russian Sámi and the Nordic Sámi Parliament Model", *Arctic Review on Law and Politics*, 2011, 2(1): 52–76
ISSN 1891-6252

Coe, Neil M. and David Jordhus-Lier: "Constrained agency: Re-evaluating the geographies of labour", *Progress in Human Geography*, 2011, 35(2): 211–233
ISSN 0309-1325

Falleth, Eva and Gro Sandkjær Hanssen:

"Participation in planning: A study of urban development in Norway", *European Journal of Spatial Development*, 2011, article no. 42
ISSN 1650-9544

Aasland, Aadne and Ihor Shevliavov: "Efficiency networks in service delivery as benchmarking practice: Experiences from Odessa and Mykolaiv oblasts", in O.O. Belyaev (ed): *Methodological Challenges in Modern Political Economics* (in

Ukrainian, Russian and English). Kiev: Kiev National Economic University named after Vadim Getman, 2011: 133–144
ISBN 978-966-483-529-6

Falleth, Eva and Berit Irene Nordahl: Governing the market through cooperation, actions and actors in urban development policy in Norway, in M. Tira, E. van der Krabben, B. Zanon et al. (eds) (2011) COST Action TU0602, *Land Management for Urban Dynamics. Innovative Methods and Practices in a Changing Europe*. Maggioli Editore 2011: 359–372
ISBN 8838760667

Falleth, Eva and Berit Irene Nordahl: The planning system and practice in Norway: A change from hierarchical autocracy towards market governance, in M. Tira, E. van der Krabben, B. Zanon et al. (eds) (2011) COST Action TU0602, *Land Management for Urban Dynamics. Innovative Methods and Practices in a Changing Europe*. Maggioli Editore 2011: 167–178
ISBN 8838760667

Falleth, Eva, Gro Sandkjær Hanssen and Asbjørn Røiseland: "Introduction: Themed section in Nordic governance", *Urban Research and Practice*, 2011, 4(1): 1–4
ISSN 1753-5069

Fuentes, Daniela Orge: "Utjevnes forskjellen i jordeiendom mellom kjønnene? Kvinners rettigheter til jord i Peru og effektene av programmet for formalisering av eiendomsrettigheter til jord" ["Is the Gender Gap in Land Titles Narrowing? Women's Right to Land in Peru and the Effects of the Rural Land Titling Project"], *Kart and Plan*, 2011, 71(2): 76–90
ISSN 0047-3278

Grødeland, Åse Berit and Aadne Aasland: "Civil Society in Post-Communist Europe: Perceptions and Use of Contacts", *Journal of Civil Society*, 2011, 7(2): 129–156
ISSN 1744-8689

Grødeland, Åse Berit and Aadne Aasland: "Fighting Corruption in Public Procurement in Post-Communist States: Obstacles and Solutions", *Communist and Post-Communist Studies*, 2011, 44(1): 17–32
ISSN 0967-067X

Guttu, Jon: "Det nye boligparadigmet" ["The New Housing Paradigm"], *Arkitektur N*, 2011, 93(2): 16–23
ISSN 1504-7628

Hanssen, Gro Sandkjær and Marit Kristine Helgesen: "Multilevel governance in Norway: Universalism in elderly and mental health care services", *International Journal of Sociology and Social Policy*, 2011, 31(3–4): 160–172
ISSN 0144-333X

Hanssen, Gro Sandkjær, Erik R. Nergaard, Jon Pierre and Asgeir Skåtholt: "Multi-level governance of regional economic development in Norway and Sweden: Too much or too little top-down control?" *Urban Research and Practice*, 2011, 4(1): 38–57
ISSN 1753-5069

Haus, Michael and Jan Erling Klausen: "Urban Leadership and Community Involvement: Ingredients for Good Governance?" *Urban Affairs Review*, 2011, 47(2): 256–279
ISSN 1078-0874

Heløe, Leif Arne: "Ambivalent samhandlingsreform" [Ambivalent Coordination Reform], *Nytt Norsk Tidsskrift*, 2011, 28(4): 405–414
ISSN 0800-336X

Hofstad, Hege: "Healthy urban planning: Ambitions, practices and prospects in a Norwegian context", *Planning Theory & Practice*, 2011, 12(3): 387–406
ISSN 1464-9357

Jones, Peris Sean and Malcolm Langford:

"Between Demos and Ethnos: The Nepal Constitution and Indigenous Rights", *International Journal on Minority and Group Rights*, 2011, 18(2): 369–386
ISSN 1385-4879

Jordhus-Lier, David, Aadne Aasland, Anders Underthun and Guri Tyldum:

"Fragmenterte arbeidsplasser? En spørreundersøkelse blant hotellarbeidere i Oslo and Akershus" ["Fragmented Jobs? A Survey of Hotel Employees in Oslo and Akershus"], *Søkelys på arbeidslivet*, 2011, 28(4): 355–373
ISSN 0800-6199

Naustdalslid, Jon: "Climate change: The challenge of translating scientific knowledge into action", *International Journal of Sustainable Development and World Ecology*, 2011, 18(3): 243–252
ISSN 1350-4509

Orderud, Geir Inge: "Climate change knowledge acquisition in Norway's municipalities", *International Journal of Climate Change Strategies and Management*, 2011, 3(4): 416–430
ISSN 1756-8692

Orderud, Geir Inge: "Finance, Home Building, and Urban Residential Structuring", *Antipode*, 2011, 43(4): 1215–1249
ISSN 0066-4812

Orderud, Geir Inge and Ilan Kelman: "Norwegian mayoral awareness of and attitudes towards climate change", *International Journal of Environmental Studies*, 2011, 68(5): 667–686
ISSN 0020-7233

Saglie, Inger-Lise: "Kommunene and boligbyggingen" ["Local Authorities and Home Construction"], *Arkitektur N*, 2011, 93(2): 30–35
ISSN 1504-7628

Schmidt, Lene: "Inn med rullestolen – ut med bokreolen" ["In With the Wheelchair – Out With the Bookcase"], *Arkitektur N*, 2011, 93(2): 24–29
ISSN 1504-7628

Skogerbø, Eli and Marte Winsvold: "Audiences on the move? Use and assessment of local print and online newspapers", *European Journal of Communication*, 2011, 26(3): 214–229
ISSN 0267-3231

Tjerbo, Trond, Marthe Indset and Tore

Hansen: "Fylkesmannens rolle i det norske styringssystemet" ["The Role of the County Governors in the Norwegian System of Government"], *Nordisk Administrativ Tidsskrift*, 2011, 88(2): 93–109
ISSN 0029-1285

Turunen-Rindel, Iiris, Lillin Cathrine Knudtson and Einar Laukli: "New criteria for universal design in Norwegian sound quality classification standard NS 8175 and results from a socio-acoustic survey among visually and hearing disabled", *Forum Acusticum*, 2011: 1329–1334 ISSN 2221-3767

Scientific articles in anthologies

Aasland, Aadne and Ihor Shevliavov: "Efficiency networks in service delivery as benchmarking practice: Experiences from Odessa and Mykolaiv oblasts", in O.O. Belyaev (ed): *Methodological Challenges in Modern Political Economics* (in Ukrainian, Russian and English). Kiev: Kiev National Economic University named after Vadim Getman, 2011: 133–144 ISBN 978-966-483-529-6

Scientific monographs

Kleven, Terje: *Fra gjenreisning til samfunnsplanlegging. Norsk kommuneplanlegging 1965–2005* [From Post War Reconstruction to Social Planning. Planning in Norwegian Municipalities 1965–2005]. Trondheim: Tapir akademisk forlag, 2011 ISBN 978-82-519-2691-1

Textbooks and other independent publishing

Brevik, Ivar: Boliger and institusjoner i pleie- and omsorgstjenestene de siste 40 år: historisk utvikling and sammenheng. Notat til Innovasjon i omsorg (NOU 2011:11) [Homes and Institutions in the Nursing and Care Services over the Past Forty Years: Historic Trends and Correlations. A Memo for *Innovation in Care* (NOU 2011:11)]. Oslo: NIBR, 2011

Brevik, Ivar: Hovedkjenne-teg ved yngre brukere av heimebaserte tjenester. Prosjektnotat for Funksjonshemmedes Fellesorganisasjon. [Main Characteristics of Younger Recipients of Home Care Services. A Project Memo for the Norwegian Federation of Organisations of Disabled People (FFO)]: NIBR, 2011

Brevik, Ivar: Kunnskap om drift av sykehjem – sirkulasjon i and tilgjengelighet til plassene 1996, 2006 og 2010: tidligere and nye resultater. Prosjektnotat for Helse- and omsorgsdepartementet. [Knowledge of Nursing Home Management – Circulation and Availability of Beds 1996, 2006 and 2010: Past and New Results. Project Memo for the Ministry of Health and Care Services] Oslo: NIBR, 2011

Guttu, Jon: Boligvisjoner: ti forbilder for den sosiale boligbyggingen. [Housing Visions: Ten Social Housing Exemplars] Oslo: Forlaget Press, 2011 ISBN 978-82-7547-456-6

Langeland, Ove and Bjørg Langset et al.: Climate Change and Territorial Effects on Regions and Local Economies. www.espon.eu

Ruud, Marit Ekne and Trond Nygård: Veien til velferd: Gjøvik 150 år, bind 2 [The Road to Welfare: Gjøvik at 150, vol 1]. Gjøvik: Alfa forlag and Gjøvik kommune, 2011 ISBN 978-82-92253-36-6

Chapters, articles in scientific books, textbooks, conference proceedings, academic journals
Aasland, Aadne, Arne Backer Grønningseter, Peter Meylakhs, Elise Klouman, Tatiana Balaeva, Hans Blystad and Andrei M. Grijbovski: "The governance of HIV/AIDS prevention in Northwest Russia: A description of a Norwegian–Russian Project", *Ekologija cheloveka*, 2011, 17(12): 49–54 ISSN 1728-0869

Aasland, Aadne, Elise Klouman, Peter Meylakhs, Tatiana Balaeva, Arne Backer Grønningseter and Andrei M. Grijbovski: "Attitudes towards HIV prevention in two Russian cities: A cross-sectional population based survey", *European Journal of Public Health*, 2011, 21(Suppl. 1): 81–82 ISSN 1101-1262

Aasland, Aadne, Andrei M. Grijbovski, Arne Backer Grønningseter, Peter Meylakhs and Elise Klouman: "Use of and trust in information sources on HIV: A cross-sectional population based survey in two Russian cities", *European Journal of Public Health*, 2011, 21(Suppl. 1): 82 ISSN 1101-1262

Berg-Nordlie, Mikkel and Arild Schou: "Who are Indigenous – And How Should it Matter? Discourses on Indigenous Rights in Norway and Nepal", *Ethnopolitics Papers* no. 13, 2011 ISSN 2048-075X

Bjørnsen, Hild-Marte and Steinar Johansen: "Kan vi leve av pleie and hårklipp?" ["Can we survive on nursing and hairdos?"] *Regionale trender*, 2011, (1): 3–7

Guttu, Jon: "Byboligen – fra idé til virkeliggjøring" [The Urban Dwelling – From Conception to Realisation], in Arne Lie Christensen (ed): *Fremtid for fortiden* [A Future for the Past]. Oslo: Fortidsminneforeningen Oslo Akershus, 2011

Heløe, Leif Arne: "Helsetjenestene under ett forvaltningsnivå?" [Health Services Under a Single Administrative Level?] *Stat and styring*, 2011, (1): 9–15

Orderud, Geir Inge: "Kunnskap om and håndtering av klimaendringer på kommunalt nivå" [Knowledge and Handling of Climate Change at the Municipal Level], in Ilan Kelman (ed): *Tilpasning til ekstremvær under klimaendringer i norske kommuner* [Adapting to Extreme Weather Under Climate Change in Norwegian Municipalities]. Oslo: CIENS, 2011, s. 64–67

Samuelsen, Roar: "Lokal infrastruktur for opplevelsesbasert verdiskaping – en undersøkelse av opplevelsens materialitet" [Local Infrastructure for Experience Based Wealth Creation – A Study of the Materiality of Experience], *Regionale trender*, 2011, (1): 29–47

Sørli, Kjetil, Marit Aure and Bjørg Langset: "Flyttemotiver and bostedsvalg" [Migration Motives and Choice of Residence], *Plan*, 2011, (5): 42–48

Leaders, commentaries, reviews, opinion pieces etc. published in journals, periodicals and the popular press

Aasland, Aadne and Arne Backer Grønningseter: "Mørkt for russiske hiv-tiltak" [Bleak assessment of Russian HIV measures], *Nordlys*, 16 February 2011

Berg-Nordlie, Mikkel: Book review: Hønneland, Geir: *Borderline Russians: Identity, Narrative and International Relations* (New York: Palgrave Macmillan, 2010), *Arctic Review on Law and Politics*, 2011, 2(2)

Berg-Nordlie, Mikkel: Book review: Teru & Kaus Mustonen: *Eastern Sámi Atlas*, *Nordisk Østforum*, 2011, 25(4)

Berg-Nordlie, Mikkel: "Russisk sameland – et politisk kart" [Russian Sámi Land – A Political Map], *Sågat* 14 January 2011

Berg-Nordlie, Mikkel: "Samiske stedsnavn and språk – fremmed and farlig?" [Sámi Place Names and Language – Alien and Dangerous?] *Nordlys* 18 January 2011

Berg-Nordlie, Mikkel and Aadne Aasland: "Migrasjon and nasjonalfølelse i Russland" [Migration and Sense of National Pride in Russia], *Dagsavisen (Nye Meninger)* 19 January 2011

Berg-Nordlie, Mikkel interviewed by Dan Robert Larsen: "Uheldig bilde av samer i Russland" [A Distorted Image of the Russian Sámi], *NRK.no* 26 June 2011

Berg-Nordlie, Mikkel, radio interview on the image of the Sámi people projected by the Nordic media, *NRK Sápmi* 2011

Falleth, Eva, Hege Hofstad, Knut Bjørn Stokke and Mari Sundli Tveit: "Hvor skal byen vokse?" [Where can the City go to expand?] *Forskning.no* 17 August 2011

Heløe, Leif Arne: Opinion pieces and commentaries in *Harstad Tidende*: Misnøyens politikk [The politics of disaffection], (February/March) Er sjøfuglene i fare? [Are sea birds in danger?], 20 April 2011 25 år siden Tsjernobyl [25 years since Chernobyl], 27 April 2011 Bomvei eller ei? [Toll road, or not?] 26 May 2011 Enda en omorganisering av politiet? [Not another restructuring of the police!] 15 June 2011 Høyre + Ap sant? [Conservatives + Labour true?] 3 September 2011 Kan ny teknologi and forebygging redde eldreomsorgen? [Can technology and prevention rescue care of the elderly?] 29 September 2011 Går byen av skaffet? [Has the town gone mad?] 5 November 2011 Hva gjør bystyret nå? [Now what will the council do?] 15 November 2011

Jordhus-Lier, David and A.C. Bergene: "Adecco og andre 'mellommenn'" [Adecco and other 'intermediaries'], *Dagens Næringsliv* 16 March 2011

Lorentzen, Hilde: "Anbudstyranniet" [Tyranny of the Tender], *Aftenposten* 11 April 2011

Orderud, Geir Inge: Book review: Calavita, Nico and Alan Mallach (eds): *Inclusionary Housing in International Perspective: Affordable Housing, Social Inclusion, and Land Value Recapture* (Cambridge, Mass.: Lincoln Institute of Land Policy, 2010), *Urban Studies*, 2011, 48(16): 3633–3636

Renå, Helge: "Et ubehagelig spørsmål" [An unpleasant question], *Aftenposten* 4 January 2011

Vedeld, Trond: "Fattige lands katastrofesekel" [A poor country's century of disaster], *Dagbladet* 4 April 2011

Conferences 2011

Papers delivered at international and national conferences

Aandahl, Guro: "Cooperative irrigation management and water politics"; read at the conference The Future of Development Research – Exploring the Nordic Perspective(s), arranged by Norwegian Association for Development Research and Nordic sister organisations, Copenhagen 23–25 November 2011

Aasen, Berit and Siri Bjerkreim Hellevik: "Fighting HIV/AIDS in African Cities – Urban Governance and Global AIDS-Programmes in Dar es Salaam city"; presented at EADI General Conference 2011: Rethinking development in the age of scarcity and uncertainty (WG18-I,II,III), arranged by European Association of Development Institutes, Working Group on Urban Governance, York, England 19.–22 September 2011

Barlindhaug, Rolf and Torunn Kvinge: "Housing career after the rejection of a state supported first time buyers' loan"; presented at European Network for Housing Research conference 'Mixité: An urban and housing issue? Mixing people, housing and activities as the urban challenge for the future', arranged by Interdisciplinary Laboratory on Solidarities Societies Territories, Toulouse, France 5–8 July 2011

Barlindhaug, Rolf: "Hvor and hvorfor bygges det for lite boliger i forhold til befolkningsveksten?" [Where and why are too few homes built relative to population growth?], presented at the Nordic Seminar for Housing and Urban Research conference Den nordiske storbyen i et åpent Europa [The Nordic City in an Open Europe], arranged by NIBR, Oslo 21–23 September 2011

Berg-Nordlie, Mikkel: "The Iron Curtain through Sápmi: Sápmi politics across the old Cold War divide"; presented at European Consortium for Political Research's (ECPR) Joint Session of Workshops 2011 – Indigenous Politics: Mobilization, Representation, Internationalization, St. Gallen, Switzerland 12–17 April 2011

Berg-Nordlie, Mikkel: "Indigenous Policy in Norway: The Sámi people", presented at the Harka Gurung Lecture Series, Kathmandu, Nepal, April 2011

Gotaas, Nora: "Endringsarbeid i selvhjelpsgrupper" [Promoting change in self-help groups], presented at Helsedugnad, conference on self-organised self-help, empowerment, strengthening and mastering one's own health, arranged by LINK Oslo and Health and Welfare Agency, Oslo City Council, Oslo 10 May 2011

Gotaas, Nora: "Forskning på selvhjelp: endringsarbeid i selvhjelpsgrupper" [Research into self-help: promoting change in self-help groups], presented at the conference Jakten på egne krefter. Selvhjelpsarbeid for mennesker med angst feirer 25 år [Pursuing Empowerment. Self-help Work for People with Anxiety Celebrates 25 Years], arranged by Anxiety Ring Norway, Oslo 31 October – 1 November 2011

Gotaas, Nora: "Selvarbeid sammen – et antropologisk blikk på endringsprosesser i selvhjelpsgrupper" [Self-help together – An anthropological look at processes of change in self-help groups], presented at the conference God alene – bedre sammen: dialogkonferanse om selvorganisert selvhjelp i møte med rus- og psykiske problemer [Good Alone – Better Together: Dialogue conference on self-organised self-help

arranged by Self Help Norway and Directorate of Health, Oslo 18 November 2011

Helgesen, Marit K.: "30 years of Norwegian public health policies: Are lessons of multilevel governance learnt?"; presented at Nordic Political Science Congress, arranged by Nordic Political Science Association (NOPSA), Vaasa, Finland 9–12 August 2011

Hofstad, Hege: "Modes of governing in the 'everyday landscape': Swedish rationalism vs. Norwegian pragmatism?"; presented at the Nordic Environmental Social Science Conference (NESS), arranged by Stockholm Resilience Center/ Stockholm University, Stockholm 14–16 June 2011

Jordhus-Lier, David: "Local contestation around a flagship urban housing project: N2 Gateway and the Joe Slovo community in Cape Town"; presented at EADI General Conference 2011: Rethinking Development in the Age of Scarcity and Uncertainty, arranged by European Association of Development Institutes, York, England 19–22 September 2011

Kvinge, Torunn: "The Nordic Model(s) – Characteristics and Challenges"; read at the conference Prioritizing the Growth of People's Income and Wealth and Consumption Driven Growth – Required Breakthroughs in Reforming Income Distribution in China, arranged by China Institute for Reform and Development (CIRD) and NIBR, Haikou, China 10–11 December 2011

Langeland, Ove: "The Foresight Approach to Climate Change Adaptation in the Baltic Sea Region"; presented at Second International BaltCICA Conference, arranged by Bergen City Council, NIBR and Interreg, Bergen 11–12 May 2011

Langeland, Ove: "Climate change adaptation in Bergen – what and how?"; presented at BaltCICA Summer School, arranged by HafenCity University of Hamburg (HCU), Hamburg, Germany 27 September 2011

Naustdalslid, Jon: "Adaptation to climate change in the water sector in Norway – Local capabilities for proactive strategies in a changing institutional framework"; presented at the Sixth European Consortium for Political Research (ECPR) General Conference, Reykjavik, Iceland 24–27 August 2011

Orderud, Geir Inge: "The emergence of regional classification systems and statistical basis in Norway"; read at the conference Regional Classification Systems for China, arranged by Institute of Population and Labour Economics, Chinese Academy of Sciences and NIBR, Beijing, China 11–14 April 2011

Ruud, Marit Ekne, Susanne Søholt and Einar Braathen: "A question of social sustainability: urban intervention in critical neighbourhoods in Portugal and Norway"; presented at the European Network for Housing Research's conference 'Mixité: An urban and housing issue? Mixing people, housing and activities as the urban challenge for the future', arranged by Interdisciplinary Laboratory on Solidarities Societies Territories, Toulouse, France 5–8 July 2011

Ruud, Marit Ekne: "Goruddalen – post war areas in change"; presented at the Nordic Seminar for Housing and Urban Research's conference Den nordiske storbyen i et åpent Europa [The Nordic City in an Open Europe], arranged by NIBR, UMB and UiO, Oslo 21–23 September 2011

Søholt, Susanne: "Pathway to Integration – Cross-cultural Adapting Strategies to Housing"; presented at the European Network for Housing Research's conference 'Mixité: An urban and housing issue? Mixing people, housing and activities as the urban challenge for the future', arranged by Interdisciplinary Laboratory on Solidarities Societies Territories, Toulouse, France 5–8 July 2011

Vedeld, Trond: "Grønn økonomi, utviklingslandene and Rio+20" [Green Economy, Developing Countries and Rio+20], read at the conference Grønn økonomi and Rio+20 [Green Economy and Rio+20], arranged by Ministry of the Environment, Oslo 2 March 2011

Vedeld, Trond: "Climate change, urban vulnerability and governance in Africa"; presented at EADI General Conference 2011: Rethinking development in the age of scarcity and uncertainty, arranged by European Association of Development Institutes, York, England 19–22 September 2011

Vedeld, Trond: "Urban governance and assessment of climate change in African cities"; read at the conference The Future of Development Research – Exploring the Nordic Perspective(s), arranged by Norwegian Association for Development Research and Nordic sister organisations, Copenhagen 23–25 November 2011

Lectures, talks delivered at other academic, Norwegian and international seminars and conferences

Aasen, Berit: "Is there a European model for development assistance to urban areas and urban issues"; presented at Workshop: Urban governance, vulnerability and resilience in cities in the South, arranged jointly by the SIP project Urban Dynamics, the European Association of Development Institutes (EADI), Working Group on Urban Governance and Chance to Sustain project (EU7FP, Norwegian Research Council and Ministry of Foreign Affairs, Oslo 17 March 2011

Aasland, Aadne: "Results from a 3-year Russian-Norwegian Project on the Governance of HIV/AIDS-Prevention in North-West Russia"; read at the conference Challenges in HIV/AIDS Prevention: Experiences from Russia and Norway, arranged by NIBR and Rassvet (Arkhangelsk), Oslo 29 March 2011

Aasland, Aadne: "The Governance of HIV/AIDS-prevention in North-West Russia"; presented at Northern Dimension Partnership in Public Health and Social Well-being's HIV/AIDS Expert Group Meeting, Riga 8 April 2011

Aasland, Aadne: "Helsesamarbeid i Barentsregionen: En suksesshistorie?" [Public Health Collaboration in the Barents Region: A Story of Success?], presented at Barents Health Conference 2011 – Samarbeid til gjensidig nytte [Collaboration for the Benefit of All], arranged by Helse Nord Northern Norway Regional Health Authority, University Hospital of North Norway, Helse Finnmark, Barents Secretariat, Tromsø 10–11 November 2011

Barlindhaug, Rolf: "Urbane boligmarkeder – egenskaper og utviklingstrekk. Er det mulig å begrense boligprisveksten i en storby med en befolkning som vokser?" [Urban Housing Markets – Attributes and Trends. Is it possible to slow home price growth in a city with a growing population?], presented at Faglig forum: Boligen: velferdsgode, markedsvare and nabolag [Academic Forum: The Dwelling: Welfare Prerogative, Commodity and Neighbourhood], arranged by NIBR, Oslo 9 February 2011

Barlindhaug, Rolf: "House prices in Norway – driven by fundamentals?", presented at EMF-ENHR Housing Finance meeting, arranged by European Network for Housing Research – Housing finance working group and European Mortgage Federation, Brussels, Belgium 30–31 March 2011

Barlindhaug, Rolf: "Kommunal- and samfunnsøkonomiske effekter av boligsosial politikk" [Municipal and Macro-economic Effects of Social Housing Policy], presented at National Council of Municipal Housing Administrations' 2011 Social Housing Conference, Haugesund 4 May 2011

Barlindhaug, Rolf: "Kommunal- and samfunnsøkonomiske effekter av boligsosial politikk" [Municipal and Macro-economic Effects of Social Housing Policy], presented at the Social Housing Conference, arranged by County Governor of Oslo and Akershus, Oslo 23 May 2011

Barlindhaug, Rolf: "Prisdannelse og flyttemønstre i Oslo-regionen" [Price Formation and Migration Patterns in the Greater Oslo Area], presented at the TAB-BUK conference 2011: Boligkvalitet i den moderne by [Quality of Housing in the Modern City], arranged by Norsk Form (Foundation for Design and Architecture in Norway) and Oslo City Development Committee, Oslo 14 June 2011

Barlindhaug, Rolf: "Kommunal- and samfunnsøkonomiske effekter av boligsosial politikk" [Municipal and Macro-economic Effects of Social Housing Policy], presented at the Norwegian State Housing Bank's breakfast seminar, Drammen 22 June 2011

Barlindhaug, Rolf: "Boligkarriere for startlånssøkere" [Housing careers of first-time buyers], presented at the Social Housing Conference, arranged by County Governor of Oslo and Akershus, Oslo 25 October 2011

Barlindhaug, Rolf: "Boligpreferanser blant eldre" [Housing Preferences among the Elderly], presented at the seminar Housing and the Elderly, arranged by Leganger Hansens Legat, Oslo 11 November 2011

Berg-Nordlie, Mikkel: "Minoritetsdiskurser og samiske media" [Minority Discourse and the Sámi Media], lecture for journalism students at Sámi University College, Kautokeino September 2011

Berg-Nordlie, Mikkel: "Russiske samer i nordisk samisk diskurs" [Russian Sámi in the Nordic Sámi Discourse], lecture for journalism students at Sámi University College, Kautokeino September 2011

Berg-Nordlie, Mikkel: "The Sámi of Norway: a brief introduction", lecture, course in Sámi politics for Russian journalists, arranged by the Norwegian Embassy, Moscow 20–26 June 2011

Berg-Nordlie, Mikkel: "Sámi politics in Norway: A brief introduction", lecture, course in Sámi politics for Russian journalists, arranged by the Norwegian Embassy, Moscow 20–26 June 2011

Berg-Nordlie, Mikkel: "Russian Sámi politics of the past and the present", lecture, course in Sámi politics for Russian journalists, arranged by the Norwegian Embassy, Moscow 20–26 June 2011

Berg-Nordlie, Mikkel: "International Sámi politics", lecture, course in Sámi politics for Russian journalists, arranged by the Norwegian Embassy, Moscow 20–26 June 2011

Brevik, Ivar: "Samhandlingsreformen – hvem er egentlig de nye brukerne?" [The Coordination Reform – Who in fact are the new users?], presented at the Health and Care Services Conference: Tjenester på strekk [Stretched Services], arranged by the County Governor of Troms, Tromsø 9 February 2011

Brevik, Ivar: "De nye hjemmetjenestene – langt mer enn eldreomsorg" [The New Home Care Services – Far Better than Care of the Elderly], read at the conference: Den mangfoldige kommunehelsetjenesten [The Many-sided Municipal Health Service], arranged by Centre for Care Research, University of Tromsø, Tromsø 30 March 2011

Brevik, Ivar: "Seniorenas boligpreferanser – resultater fra en undersøkelse ved NIBR" [Senior Citizens' Housing Preference – Results of a Survey Conducted by NIBR], presented at a public meeting on housing policy for senior citizens, municipality of Gloppen, Gloppen 12 April 2011

Brevik, Ivar: "Vekst og endret innretning av pleie- og omsorgstjenestene uavhengig av forholdet til 2. linjetjenesten" [Expansion and Changed Policy on Nursing and Care Services Independent of Relations with the Secondary Health Services], presented at the 2011 Coordination Conference, arranged by Central Norway Regional Health Authority, Geiranger 5 May 2011

Brevik, Ivar: "Bygging av boliger for seniorer er god kommuneøkonomi" [Building Homes for Senior Citizens Makes Economic Sense for Municipalities], presented at annual meeting of DES boligspareklubb Norge, Lysaker 9 May 2011
Brevik, Ivar: "Eldreomsorg i Oslo" [Elderly Care in Oslo], presented at a Political Meeting arranged by Oslo Association of Pensioners, Oslo 31 August 2011

Brevik, Ivar: "De nye hjemmetjenestene – langt mer enn eldreomsorg" [The New Home Care Services – Far Better than Care of the Elderly], read at the conference Vi tar eldrebølgen: samhandlingsreformen akkurat nå [Senior Citizens do the Mexican Wave: The Coordination Reform Just Now], arranged by Harstad City Council, Harstad 15 September 2011

Fuentes, Daniela Orge: "Impacts of joint certification of husbands and wives in Peru", presented at Workshop at official opening at the centre for Land Tenure Studies (CLTS) – Norwegian University of Life Sciences, Ås 27 June 2011

Guttu, Jon: "Utendørs boligkvalitet i byområder" [Outdoor Housing Standards in City Districts], presented at a seminar on urban housing arranged by Tromsø City Council, Tromsø 15 June 2011

Guttu, Jon: "Utendørs boligkvalitet i byområder" [Outdoor Housing Standards in City Districts], presented at a seminar on densification arranged by the Municipality of Asker, Asker 13 September 2011

Guttu, Jon: "Planhistorie og møtesteder på Holmlia" [Planning History and Public Venues at Holmlia], presented at jubilee seminar arranged by Holmlia Public Library, Oslo/Holmlia 13 October 2011

Guttu, Jon: "Utendørs boligkvalitet i byområder" [Outdoor Housing Standards in City Districts], presented at the 2011 Housing Course, arranged by Norwegian State Housing Bank and Gardeners' Association, Oslo 19–20 October 2011

Hanssen, Gro Sandkjær and Signy Irene Vabo: "Sykehjem til alle? Nasjonal politikk og lokal tilpasning" [Nursing Home Beds for All? National Policy and Local Adaptation], presented at an academic conference on the conjunction of national and local democracy in Norway (Multi-level Democracy in Norway), arranged by Department of Social Studies, Oslo and Akershus University College, Oslo 20 October 2011

Helgesen, Marit K.: "Kommunene som frikar eller husmenn – krisesentre mellom kommunal selvstendighet og statlig styring" [Local Authorities as Freeman or Bondsmen – Women's Shelters between Municipal Independence and Government Control], presented at the National Conference on Local Coordination in the Fight against Violence in Close Relationships – Shelter Provision], arranged by Ministry of Children Equality and Social Inclusion, Oslo 29 November 2011

Heløe, Leif Arne: "Hvor går velferdsstaten?" [Quo Vadis, Welfare State?], presented at a public meeting arranged by Troms Conservative Party, Tromsø 13 February 2011

Heløe, Leif Arne: "Helse- og sosialtjenestene på ett nivå?" [Health and Social Services at the Same Administrative Level?], read at the conference Velferdsstat for fremtiden [Welfare State for the Future], arranged by Norwegian School of Management BI, Oslo 26 May 2011

Heløe, Leif Arne: "Om Samhandlingsreformen" [On the Coordination Reform], presented at a public meeting in the municipality of Ibestad, arranged by municipality of Ibestad 16 June 2011

Heløe, Leif Arne: "Om Samhandlingsreformen og eldreomsorgen" [On the Coordination Reform and Care of the Elderly], two papers read at the 2011 conference Vi tar eldrebølgen [Senior Citizens do the Mexican Wave], arranged by Harstad City Council and Norsafety, Harstad 15 September 2011

Hofstad, Hege: "Bærekraftig arealplanlegging: hvordan forenes konkurrerende målsettinger i byutviklingen?" [Sustainable Land-use Planning: How to Balance Competing Urban Development Goals], presented at the seminar Bærekraftig forvaltning av bynære friluftsområder [Sustainable Management of Outdoor Areas Near Towns and Cities], arranged by University of Life Sciences, NIBR and Moss City Council, Moss 6 December 2011

Hofstad, Hege: "Hva er det aller viktigste kommunale ledere bør være forberedt på?" [What's the most important thing leaders of local authorities should be prepared for?], presented at Kommunedagene 2011 [Municipal Days 2011] – workshop, arranged by Norwegian Association of Local and Regional Authorities, Oslo 31 August 2011

Kvinge, Torunn: "Bolig og befolkningsutvikling i delbydel Linderud" [Housing and Population Growth in the Suburb of Linderud], presented at Oppstartskonferanse for nytt område/øft på Linderud – Vollebekk – Brobekk [Inaugural Conference for Urban Renewal of Linderud – Vollebekk – Brobekk], arranged by Oslo City – Bjerke, Oslo 21 October 2011

Langeland, Ove: "Internasjonalisering and globalt lederskap" [Internationalisation and Global Leadership], read at the conference Internasjonalisering, klynger and læring [Internationalisation, Clusters and learning], arranged by Molde University College, Molde 12–13 May 2011

Langeland, Ove: "Bergen – det plasker ned and det stiger opp" [Bergen – It's Pouring Down and It's Rising Up], presented at Faglig forum: Klimatilpasning i byer [Academic Forum: Adapting to Climate Change in the City], arranged by NIBR, Oslo 25 May 2011

Lied, Camilla: Comments to Nafstad's paper titled "Organisering av byen, og sosial deltakelse – det åpne rusmiljøet i Oslo" [City Organisation and Social Participation – The Open Drug Abuse Scene in Oslo] at the Nordic Seminar for Housing and Urban Research's (NSBB) conference Den nordiske storbyen i et åpent Europa [The Nordic City in an Open Europe], arranged by NIBR, Oslo 21–23 September 2011

Nørve, Siri: "Medvirkning som virkemiddel i byggesektoren" [Participation as a Means to an End in the Construction Sector], presented at the seminar Er medvirkning i plan- and byggeprosesser for vanskelig? [Is Participation in Planning and Building Processes Difficult?], arranged by Deltasenteret, Oslo 27 September 2011

Nørve, Siri: "Universell utforming: deltakelser, innflytelse og profesjonalisering" [Universal Design: Participation, Influence and Professionalization], presented at a seminar at the Norwegian Association for the Disabled, Gardermoen 23 November 2011

Ruud, Marit Ekne: "Områdesatsing i Oslo – bedring av levekår", presented at Faglig forum: Boligen: velferdsgode, markedsware, nabolag, arranged by NIBR, Oslo 9 February 2011

Schmidt, Lene: "Living in a box – teit eller trendy?", presented at Faglig forum: Boligen: velferdsgode, markedsware, nabolag, arranged by NIBR, Oslo 9 February 2011

Schmidt, Lene: "Hva er god boligkvalitet?" [What Counts as Good Housing?], presented at the seminar Arealeffektive løsninger og tilgjengelige boliger [Land Efficient Solutions and Accessible Housing], arranged by Norwegian Association of Architects and National Office of Building Technology and Administration, Oslo 7 April 2011

Schmidt, Lene: "Fortett med vett" [Common Sense Densification], presented at the Norwegian State Housing Bank's Open Day for Professionals, Oslo 7 June 2011

Skogheim, Ragnhild: "Hvem bestemmer i byutviklingen?" [Who Makes the Decisions in Urban Development?], presented at Oslo Centre Party's annual county meeting, Oslo 5 February 2011

Skogheim, Ragnhild: "Stedsutvikling and identitet" [Place Development and Identity], presented at the seminar SlettemarkART, arranged by Naustdal Municipal Council, Naustdal 21–22 October 2011

Søholt, Susanne: "Møte mellom innvandrerbefolkningen og boligmarkedet" [Immigrant Communities and the Housing Market], presented at Faglig forum: Boligen: velferdsgode, markedsware, nabolag [Academic Forum: The Dwelling: Welfare Prerogative, Commodity and Neighbourhood], arranged by NIBR, Oslo 9 February 2011

Søholt, Susanne: "Migrasjon, inkludering og byutvikling" [Migration, Social Inclusion and Urban Development], presented at the seminar Inkluderende byutvikling [Inclusive Housing], arranged by Oslo Housing and Planning Association and Norwegian Polytechnic Society, Oslo 7 June 2011

Søholt, Susanne: "Migrasjon and inkludering – bolig and by" [Migration and Social Inclusion], presented at OXLO – Oslo Extra Large – en by for alle [OXLO – Oslo Extra Large – A City for All], arranged by Oslo City Council, Oslo 20 September 2011

Søholt, Susanne: "Nordic welfare states and the dynamics and effects of ethnic residential segregation", presented at an academic seminar arranged by the Ministry of Children, Equality and Social Inclusion, Oslo 4 May 2011

Sørli, Kjetil: "Eldrebosetting and eldrebølger: forskjeller mellom kommunegrupper" [Senior Citizens' Housing and Aging Trends], presented at the seminar Befolkningsutviklingen, aldring and tjenesteproduksjon [Demographic Trends, Aging and Service Production], arranged by the PANDA Group, Lørenskog 27 January 2011

Sørli, Kjetil: "Bo- and flyttemotivundersøkelsen 2008: flyttekarrierer, flyttemotiver, flyttehistorier" [Residence and Migration Motivation Survey 2008: Migration Trajectories, Migration Motivations, Migration Histories], presented at Faglig forum: Boligen: velferdsgode, markedsware and nabolag [Academic Forum: The Dwelling: Welfare Prerogative, Commodity and Neighbourhood], arranged by NIBR, Oslo 9 February 2011

Sørli, Kjetil: "Flytting, pendling og bosetting i Møre og Romsdal" [Migrating, Commuting and Residence in Møre and Romsdal], presented at the mini-seminar Prioriteringskriterium Veg [Priority Criterion Road], arranged by Møre and Romsdal County Council, Molde 18 February 2011

Sørli, Kjetil: "Hvor bor de unge i dag?: trender and flyttemotiv" [Where do Young People Live Today? Trends and Reasons for Moving], presented at the seminar Unge voksne and bolyst i Telemark [Young Adults and Residential Appeal of Telemark County], arranged by Telemark County Council, Skien 10 March 2011

Sørli, Kjetil: "Befolkningsutviklingen i storbyene: Trondheim" [Population Trends in the Major Cities], read at the conference Utviklingen i Trondheim-regionen [Promoting Growth in the Greater Trondheim Area], arranged by Trondheim City Council and Norwegian Association of Local and Regional Authorities, Trondheim 17 March 2011

Sørli, Kjetil: "Flytting til byer fra samiske områder" [Moving to Towns and Cities from Sámi Areas], presented at the seminar Samer i by [Sámi in the Cities], arranged by the Centre of Sámi Health Research, Tromsø 6 April 2011

Sørli, Kjetil: "Flytting and bosetting i det lange løp i Lurøy" [Migration to and Settling in Lurøy over the Longer Term], presented at the Lovund seminar, arranged by Lurøy Municipal Council, Lovund 17 June 2011

Sørli, Kjetil: "Befolkningsutvikling and bosettingsmønster" [Population Growth and Residential Patterns], presented at the seminar Livskraftige lokalsamfunn i Ringerike [Thriving Local Communities in Ringerike], arranged by Ringerike Municipal Council, Oslo 23 June 2011

Sørli, Kjetil: "Myter and virkelighet om by and land" [Town and Country – Myths and Reality] presented at County Governor's dialogue conference, arranged by the County Governor of Sør-Trøndelag, Trondheim 31 August 2011

Sørli, Kjetil: "Hvem er de der ute? (de som bor and har flyttet til Vesterålen) [Who are they out there? (People who live and have moved to Vesterålen)], presented at Bokbussen i Vesterålen 25 år [Vesterålen Mobile Library, 25 Years Old], arranged by Vesterålen's Regional Council, Sortland 25 November 2011

Vedeld, Trond: "Urban vulnerability and governance in African cities", read at the conference Climate Change and Urban Vulnerability in Africa (CLUVA), arranged by University of Ouagadougou, Ouagadougou, Burkina Faso 17–21 January 2011

Vedeld, Trond: "Byer and klimasårbarhet i Afrika" [Cities and Climate Vulnerability in Africa], presented at Faglig forum: Byer and klimaendring [Academic Forum: Cities and Climate Change], arranged by NIBR 25 May 2011

Vedeld, Trond: "Climate Change and Urban Governance", presented at the seminar Sustainable Development and Resource Economics, arranged by the World Bank/Norad, Oslo 12 April 2011

Vedeld, Trond: "Climate Change and Urban Governance in Africa", read at the conference Urban Vulnerability and Governance in Saint Louis, arranged by Universitè Gaston Berger, Saint Louis, Senegal 26–28 April 2011

Vedeld, Trond: "Climate Change and Urban Governance in Africa", read at the conference Urban Vulnerability and Governance in Dar es Salaam, arranged by Ardhi University, Dar es Salaam, Tanzania 13–16 June 2011

Vedeld, Trond: "Governance Approaches to Urban Climate Change", presented at CLUVA workshop on Urban Participatory Climate Change Adaptation Appraisal Methodology, Social Vulnerability, Institutions and Governance, arranged by Helmholtz Centre for Environment Research, UFZ, Leipzig, Germany 5–8 December 2011

Winsvold, Marte: "Klimatilpasning i byer" [Adapting to Climate Change in the Cities], presented at Faglig forum: Byer and klimaendring [Academic Forum: Cities and Climate Change], arranged by NIBR, Oslo 25 May 2011



Norwegian Institute for Urban and Regional Research

Address: Gaustadalléen 21,

N-0349 Oslo, Norway

Telephone: +47 22 95 88 00

Telefax: +47 22 60 77 74

nibr@nibr.no

www.nibr.no