

The cover features a complex, layered illustration. At the top, a teal triangle contains the year '2012'. Below it, the title 'Annual report' is centered. The background is a collage of elements: a large globe, a map of Norway, a group of stylized human figures, and various geometric shapes like rectangles and circles. A dashed line path winds through the scene. The color palette is dominated by teal, light blue, and green.

Annual report 2012



NIBR

Norwegian Institute for Urban and Regional Research

Contents

Norwegian Institute for Urban and Regional Research (NIBR)	3
Are evaluations any use?	4
Research Areas	6
Interdisciplinary Research	10
NIBR's Board 2012	13
Annual Report 2012	14
Annual Accounts 2012	15
Competency Audit and Clients	16
Communication and Outreach Activity	17
In-house Publications	19
External Publications	20
Academic Conferences	22

Editor
Inger Lise Næss

Graphic design
Melkeveien designkontor

Photos
Inger Lise Næss
Daniel Staver

Oslo, 2013

Norwegian Institute for Urban and Regional Research

The Norwegian Institute for Urban and Regional Research (NIBR) is an independent research institute specializing in the social sciences, which generates and communicates research-based knowledge of practical use to decision-makers and the public.

Expertise at NIBR lies essentially in the area of national and international place research; public administration and selected policy areas. By working in close proximity to practitioners in the field and by applying an interdisciplinary approach, we are able to develop and undertake coherent and robust analyses.

Place refers essentially to a geographic area, but it can also embrace identity and affinity. Public administration is knowledge of political processes, policy tools, administration and values.

Organization

NIBR has a cross-disciplinary staff of sociologists, political scientists, economists, demographers, anthropologists, geographers, architects and civil engineers, fifty-nine researchers in all. Of these, twenty-five have a PhD, and twelve have the highest academic qualifications corresponding to the position of professor.

NIBR had seventy-two employees in full-time positions at the end of 2012; thirty-seven of whom were women and thirty-five men.

Research at NIBR

NIBR's core expertise is in urban and regional research. This is a wide-ranging, cross- and multidisciplinary field of inquiry in the social sciences, and involves among other things:

- Analyses of social conditions and social change in urban and rural communities, across regions, sectors and levels

- Analyses of regional development and wealth creation; housing and urban development; planning and public administration; democracy and welfare in and across local communities
- Territorial analyses aligned with studies of sustainable development

NIBR has a large international network and the institute's international activity has grown steadily in recent years.

In addition to conducting research in Norway, NIBR has projects in

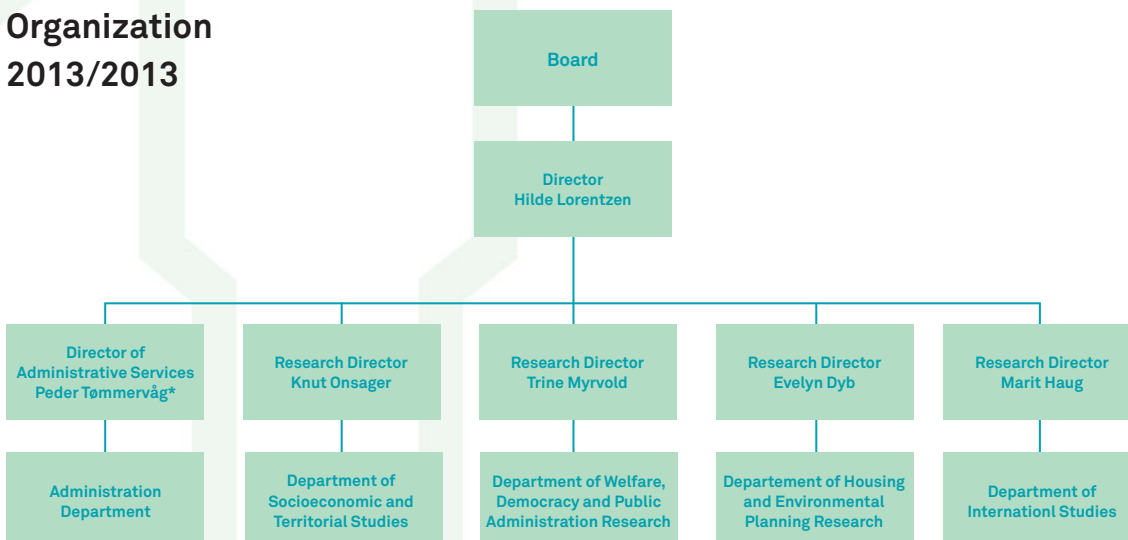
- Southern and Eastern Africa
- South and South-East Asia
- Latin America

Eastern Europe, Eurasia and Central Europe

NIBR is one of Norway's environmental research institutes. NIBR's skills in the social sciences facilitate the coherent production of knowledge for tackling environmental challenges and issues arising from social change and development. NIBR is a member of the Environmental Alliance, a strategic partnership of the seven leading environmental research institutes in Norway.

NIBR is also a partner of the *Oslo Centre for Interdisciplinary Environmental and Social Research* (CIENS – *Forskningscenter for miljø og samfunn*), a research partnership of independent research organisations and the University of Oslo. Work at the centre is facilitated by shared scientific strategies and research programmes, practical collaboration on research and outreach activity. NIBR and the other institutes are located in the same environmentally friendly building at the Research Park close to the University of Oslo.

Organization 2013/2013



* From January 2013: Lise Kvanvik (acting)

Are evaluations any use?



Hilde Lorentzen
Director General

One of NIBR's principal activities is to conduct national and international evaluations. Examples are the evaluation of the administrative reform in the child welfare service; mid-term evaluation of the Grorud Valley Action Plan; evaluation of the effects of regional policy; and the evaluation project *Combating violence against women*, an analysis of FOCUS projects in the period 2005–12. The four evaluations are located thematically at the heart of NIBR's expertise in governance, housing policy, regional and international development.

For NIBR it is clearly a very pleasing development that the number of evaluations is growing, since they represent such a significant component of our livelihood. But why is the number increasing? Why is evaluating so important?

Evaluations in the private and public sector are more popular today than ever. Students evaluate teachers; guests review their hotel stay; and the state evaluates

its own activities and agencies, at all levels and in all sectors. We even have a separate directorate – Directorate for Financial Management (DFØ) – to ensure evaluation standards and strategic use of evaluations in all government agencies. DFØ has created a network to facilitate the evaluation of state entities, the EVA Forum, and is aiming to collect information on all state assessments. As of writing, 1,560 such evaluations have been registered.

One reason why it is important to evaluate, is because evaluations are essential to the progress, adjustment and follow through of a project, an action or a political reform. Not least, evaluations are important as a means of learning and enabling change. This last point emphasizes the utility aspect of evaluations. It should be possible, at the end of the evaluation, to *put the results to work* in a constructive way.

Since it is often the country's research institutes which undertake the evaluations, the *scale* of evaluation activity is of great importance to the institutes' continued existence and capacity building. NIBR is no exception. NIBR's wide-ranging evaluation portfolio has not only allowed the institute to build robust methodological and thematic evaluations skills, it has also given us considerable experience of the various circumstances in which evaluations take place. For an evaluation to be successful, *all* stages of the process must be at a qualitatively high level: at the point of *commission*, during *execution* and in the *application* of the final results.

As in the design of any commissioned project, the body commissioning the evaluation should be sufficiently knowledgeable to produce a good professional set of tendering instructions, both with regard to substantive content and what it is possible to evaluate. Research institutes do experience from time to time, however, that the client holds somewhat unrealistic expectations as to what can be investigated and how the evaluation should proceed. It is therefore important that the tendering instructions leave it to the researcher to assess the best approach and the best data for the evaluation in question. But of equal importance is an awareness of the relationship between the subjects of the evaluation and the circumstances in which the evaluation is undertaken. It is also important – in relation to evaluation quality and outcome legitimacy – to ensure a satisfactory distance between the parties. One possible



way of doing this is to use the Research Council as a “buffer” between the client and the party doing the evaluation.

Good evaluations necessarily require skilled evaluators, both with regard to evaluation methodology and knowledge of the substantive field. Perhaps equally important is the evaluator’s ability to present the results in such a way as to facilitate learning and change. When researchers sometimes feel exasperated because their evaluations are put in a drawer and quickly forgotten, it *could be* because the assignment was a compulsory exercise for the client or because they for various reasons did not really want to deal with the results. But it could also be that the manner in which the analyses and results are presented is not conducive to learning and action.

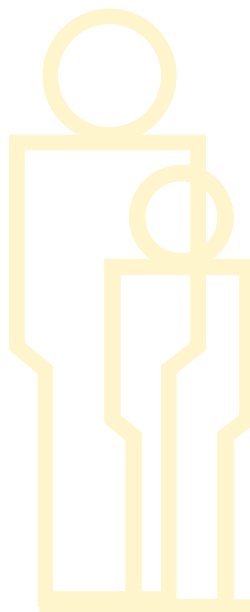
Research authorities are continually elevating practical utility as a key purpose of research, saying that research must enable and facilitate creativity and innovation. The concept of innovation used to be used in connection with physical and technical products. Today, one increasingly speaks of *social* innovations, such as genuinely new organizational solutions or management systems. Within the social sciences it is the evaluation itself – or at least the high quality evaluation – which represents the innovative opportunity.

In 2013, working with EVA Forum and Norwegian Evaluation Society, NIBR will be hosting the annual Evaluation Conference. The conference is a venue for anyone interested in – or working on – evaluations in Norway or other countries. The conference attracts clients and evaluators from the public, private and voluntary sectors, from universities, the independent institute sector and consulting firms. The theme of this year’s conference is precisely *Evaluation as Innovation*. We want to focus on the effect of objectives like enabling change and producing innovative solutions on the various stages of an evaluation: the formulation of the tendering instructions, the design of the evaluation procedure, and how outcomes are translated into change and action.

Nor can the research institutes themselves avoid evaluation-related trends. Only recently the Research Council and its system for funding research institutes were themselves evaluated. And in connection with the government’s white paper on research it presented recently (*Meld. St. 18 (2012-2013) Long-term Perspectives – Knowledge Equals Opportunity*),

NIFU (Nordic Institute for Studies in Innovation, Research and Education) did several evaluations of the Norwegian institute sector. The country’s research institutes expressed their disappointment through the mouthpiece of the FFA (Forskningstituttene fellesarena – Association of Norwegian Research Institutes) with white paper’s lack of specifics on the institute sector’s future and place in the Norwegian research landscape. There are, nevertheless, some exceptions. According to the white paper, the Research Council’s strategic role in relation to the research institute sector will be clarified; it was in that connection that a strategy for evaluating the institutes was announced.

The country’s research institutes are generally very happy with this initiative. We look forward to the Research Council’s contribution to clarifying the functions and *modus operandi* of the research institutes. Although the Council is an experienced evaluator, we would nevertheless like to make a request or two and offer some advice. First, the Research Council needs to define – in consultation with the research institutes – a clear objective for the evaluation. Second, it is important that the people undertaking the evaluation are familiar with the institute sector and the conditions in which it works, its place in the research system and its distinctive features. And finally, we want the evaluation to be *useful*. This means that we would like to see that the feedback we are given comes in a form and has a content we can use to formulate the strategic plans for the institutes moving forward.



Research Areas

A list of NIBR's publications can be found at the end of the report

Publications and projects can also be accessed via the website: www.nibr.no

Department of Housing and Environmental Planning Research



In 2012, the department had twelve full-time researchers, one research fellow and one affiliated researcher on a part-time basis. Researchers from other institutions worked in the department on specific projects. Academically, the department represents a broad canvas of most of the social sciences as well as architecture and the humanities. The department's project portfolio in 2012 covered a wide range of topics and issues in housing research, together with a smaller portfolio of projects related to planning studies. NIBR is also in the process of building capacity in migration studies with a basis in the department.

Housing and urban research

NIBR has the largest housing research environment in the country. Research covers all aspects of the topic in the social sciences, and includes studies and analyses of welfare and social housing policy, housing development policy and housing markets. Our project portfolio included among other things studies of the national housing market and migration, migration motivation and housing careers, challenges facing disadvantaged groups in the housing market and the relationship between house prices and house building.

In 2012, the department initiated two major Research Council-funded projects. The theme of the first, "Undesirable housing market positions – Ways in and out", looks at the relationship between participation in the labour market and adverse positions in the housing market. The second project, "The multiethnic rural community: Exclusion or inclusion of immigrants?", examines conditions facilitating the integration of

immigrants in smaller municipalities. This latter project is conducted in collaboration with other departments at NIBR.

Over the past few years, the department has been running several projects on population growth in densely populated areas and housing construction. In 2012, researchers in the department conducted, among other things, a project on new housing in the major cities. The project "Urban planning measures and residential segregation" looked at how different urban planning tools can be used to counteract residential segregation in areas with strong population growth. The latter project has elements of housing, urban and planning research.

The anthology *Boligmarked og politikk (Housing Market and Politics)*, with contributions mostly from researchers in the department, came out in 2012. The book is the result of a four-year strategic institute programme on housing research based on the social sciences and funded by the Ministry of Local Government and Regional Development (completed in 2011). The book addresses the most important issues in housing research and housing policy.

Planning research

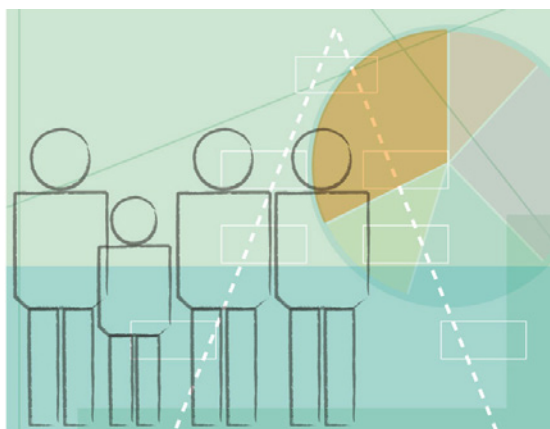
NIBR is the national resource centre for planning and environmental impact assessment under the Planning and Building Act (Centre for Planning and EIA). The centre, which was established by the Ministry of Environment, is an advisory, network and information unit. Researchers in the department are active members of several international networks and attended in 2012 numerous international research conferences where they presented the fruits of their own research. The project "Promoting Coastal Communities", funded by



the Research Council, asks why some small coastal communities manage to prosper and thrive while others struggle. The project involves elements of both planning research and place studies.

Research Director
Cand.sociol. Evelyn Dyb

Department of Welfare, Democracy and Governance Research



The department's main field of expertise is based on knowledge of how the public sector is organized and the impact of its organization on political participation, governance, policy making, allocation of responsibilities and tasks. The department investigates these issues in a number of policy areas, particularly health and welfare, climate and the environment.

Research in the department concerns scientific questions arising from the study of politics, policy making, political processes and challenges within government administrations and administrative practice. By aligning scientific perspectives with political issues, research findings should be able to enhance knowledge and provide greater insight. Research at the department covers all stages of policy making and policy enactment, and includes both empirical and normative analyses. We are particularly attentive to political systems' democratic challenges and the impact of multi-level governance on policy making. We are working on questions related to the various levels of government, and have detailed knowledge of the role of local governments in Norwegian politics and administrations. Researchers in the department are highly skilled in the use of qualitative and quantitative methods.

In 2012, researchers in the department worked on several projects concerning health and welfare. We completed projects on promoting public health locally and regionally. They included a baseline survey of local and regional authorities' organization of public health work in advance of the introduction of the new public health act. Also in 2012, researchers in the department continued work on a long-term project on self-help work.

The department has evaluated several public sector programmes and reforms. NIBR is involved in a major project led by the Department of Health and Society at

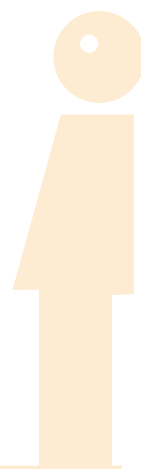
the University of Oslo that evaluates the coordination reform in the health sector. We have also conducted an evaluation of the further and higher education programme "Health Care Plan" (HelOmPlan), a programme devised for health trusts, officials in municipalities, counties and county governor offices with responsibility for planning local / regional public health and care services. The evaluation of "Flink med folk i første rekke" ("First and Foremost, Good with People"), an initiative aimed at developing leadership skills among staff in local nursing and care services, was completed in 2012.

Several of the department's researchers are working on projects related to environmental and climate issues. One of them is a major study investigating Norway's implementation of the EU Water Framework Directive at local and regional levels.

A central field of expertise at the department concerns relations between levels of government. In 2012, we completed a major study of the effect of public oversight on municipal autonomy. Another project looked at the factors facilitating partnerships and equality between the central and local governments.

The department's expertise in the management of cultural heritage has evolved thanks to projects looking into the administrative museums' responsibilities and roles in the management of our archaeological heritage and the involvement and influence of the Cultural Heritage Management Office in municipal planning procedures.

Also in 2012, NIBR researchers worked on projects concerning democracy and participation in Norwegian municipalities. In partnership with the Rokkan Centre, University of Bergen, NIBR conducted a survey of measures aimed at involving more citizens in local decision-making between elections.



Research Director
Cand. polit. Trine Myrvold

Department of International Studies in Development, Transition and Migration



The department investigates government systems, politics, policy making and popular organization. Our research is particularly concerned with how local authorities and communities deal with the challenges connected with climate change and the environment, energy and natural resource management, and how local autonomy can promote inclusive and equitable development. For example, we look at what is being done to involve women and different ethnic, religious and caste-based minorities, as well as vulnerable areas such as slums, in democratic processes. In 2012, we had research projects in Russia, Ukraine, Poland, Latvia, Brazil, Peru, Democratic Republic of Congo, Senegal, South Africa, Tanzania, India, Nepal, Bhutan and Vietnam. NIBR has strengthened research on the so-called BRICS countries, and we are undertaking major research projects in all of them.

Urban research has become a major aspect of the department's work in recent years. We have several projects exploring key challenges facing the world's megalopolises. The projects look at the relationship between democratic innovation and poverty alleviation and how cities address climate vulnerability. The studies undertaken in Cape Town, Rio de Janeiro, Sao Paulo, St. Louis, Dar es Salaam and Mumbai are carried out in cooperation with European and national research institutions.

In the area of climate change, we have worked in particular on various measures designed to facilitate adaptation to climate change and how these measures are financed, organized and implemented at all levels from the global to the local. We study climate change adaptation measures in vulnerable urban and rural areas of India and we are particularly interested in the relationship between measures implemented by the public authorities in this area and people's own strategies. In Russia we have been involved in

pioneering work on climate change in a study of Russian authorities and how they are dealing with climate change. In the field of climate change research, we work closely with the scientific community and other CIENS institutes.

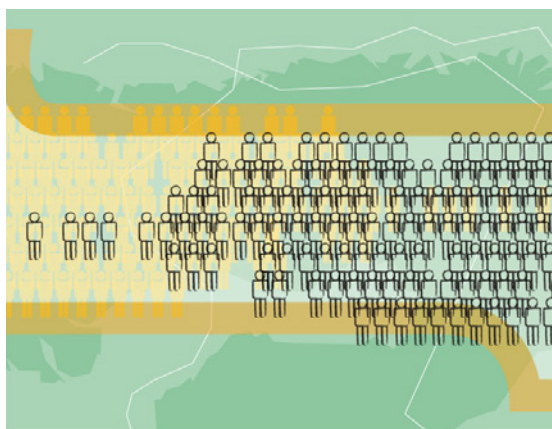
Over the last few years we have intensified our focus on women and gender equality, particularly in South Asia. Specifically, we study women and political participation, but also other forms of participation and inclusion. To this end, we have established an important partnership with UN Women. We also study the impact of various interventions on women's status and rights, such as land reform in Peru and the growing rate of organization among women. We have been engaged in more operational projects related to training and capacity building of women in Vietnam. Several reviews and evaluations of the work of Norwegian authorities and organizations relating to women and gender equality have brought us into close contact with Norwegian development aid in this area, particularly Norwegian efforts to prevent violence against women. We have also evaluated the global work undertaken by FOCUS, an umbrella organization of Norwegian women's organizations, and also smaller initiatives funded by NORAD in Bangladesh and Zimbabwe.

We have continued our study of various forms of civil society organization, such as church networks in the Democratic Republic of the Congo, grassroots movements in Nepal, indigenous peoples' organizations in Russia, trade unions in Norway and Norwegian relief organizations. Some of the projects are in countries marked by violent upheavals. In these countries, we investigate what action is being taken to promote citizen organization and the role these organizations play in resolving major political challenges.



Research Director
Ph.D. Marit Haug

Department of Socioeconomic and Territorial Studies



The department conducts research into and evaluations of local and regional development in Norway and abroad. Of central importance are questions related to population, industry and sector development, climate change and environmental problems, and performance of rural and regional policy.

The department has expertise and experience in the following basic areas:

Economic and social development at the regional level involves studies of and capacity building in 1) interrelations between demographics, business and sector development in municipalities and regions; 2) regional economic processes and economic development; 3) regional conditions enabling innovation, attractiveness and growth; 4) impact of sectoral and regional policy tools and mechanisms.

Settlement system's characteristics, functions and evolution covers studies of and capacity building in 1) demographic processes, relocation/migration and residential location choice; 2) residential appeal of places and regions; 3) formation of places, towns and regions, functional systems and changes.

Climate, environment and sustainability relates in particular to studies of and capacity building in 1) climate change, distribution and social justice; 2) local and regional effects of climate change and climate change policy; 3) attitudes, plans and mechanisms at the local/regional level; 4) institutional conditions favouring sustainable urban development.

In addition to these core areas, the department has extensive expertise in socioeconomic analysis, and to some extent on issues straddling conventional priority areas.

The department is actively involved in joint Nordic and European projects, particularly comparative territorial research projects on issues relating to all of our core areas. The European research programme ESPON (European Observation Network for Territorial Development and Cohesion) has been central to our applied regional and territorial research since 2002. The department is, moreover, ESPON's national focal point in Norway.

The department works extensively with a number of other Norwegian research establishments and consultancies at home and abroad on a project basis. Over time, some of these partnerships have become more permanent. At the national level, the department is an active member of the PANDA group (comprising regional authorities, ministries and relevant research establishments) and one of the department's researchers has led PANDA's user forum for several years.

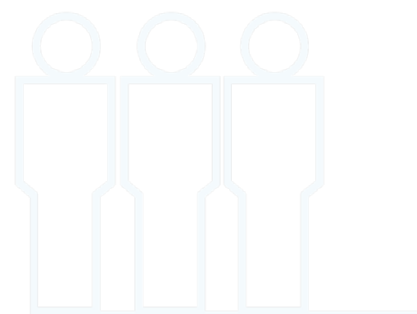
Researchers at the department participate regularly and actively in the Regional Science Association, in both the European and Nordic sections, by contributing to annual conferences, holding offices and undertaking responsibility for joint arrangements.

The Nordic/European cooperation network includes a significant number of universities, research institutes and researchers. A major network of prestigious Chinese universities and research institutions has also been created.

The department had in 2012 the equivalent of almost seventeen full-time researchers (twenty researchers), including economists, human geographers, sociologists, political scientists, a social anthropologist, an engineer and a demographer.



Research Director
Dr. Polit. Knut Onsager



Interdisciplinary Research

NIBR applies an interdisciplinary approach in several areas. We work across departments within NIBR through our Strategic Institute Initiatives (SIS) and in theme groups; we work with other institutions nationally through the CIENS alliance and on individual projects; we have an extensive international network; and we participate in joint research projects worldwide. Collaborative and reciprocal relations with other centres of research and research networks are stimulating and important not only because they expand the expertise of the individual researcher but because they strengthen research at NIBR as a whole.

Strategic Institute Initiative (SIS) 2011–14: Governance and planning challenges in cities and towns

Over half of the world's population lives in cities; in Europe this is true of more than 80 per cent of the population. Cities are economic, political and cultural power centres, but they are also vulnerable to climate change. How can we plan and develop robust cities capable of preventing and adapting to climate change? How will climate change affect public health, and how can these issues be handled politically and administratively? These are some of the key questions NIBR's Strategic Institute Initiative has addressed in the period 2011–14. The initiative strengthens the institute as a provider of knowledge and studies of the new challenges facing society as a result of global warming, rapid urbanization and associated social and environmental issues. The initiative are organized in the form of six projects which represent NIBR's most comprehensive, interdisciplinary undertaking to enhance capacity building and visibility.

The first working group is called SOUTH; it studies climate change, multi-level governance and cities in the global South. Cities examined by the group include Dar es Salaam, Cape Town, Saint Louis (Senegal) and Rio de Janeiro. Characteristic of many cities in the South is the extremely rapid pace of urbanization and emergence of informal settlements (slums, shanty towns), which lack functioning water and sewage systems and, usually, public services. At the same time, these settlements often appear in areas that are prone to flooding and vulnerable to other climate-related challenges. SIS SOUTH studies climate vulnerability, slum upgrading and sustainable urban development in light of these problems.

The second group is called PLANNING and focuses on how the planning system could be used to help create sustainable and robust cities. Strategic thinking, enhanced coordination, cooperation and participation are seen as key factors in tackling the complexity and uncertainty of sustainability and climate change. The

group will conduct three meta-studies of the planning sector in general and, more specifically, in relation to particular planning tools, both in a Norwegian and an international context.

The third working group, MISARIS, focuses on energy-efficient and climate-neutral buildings and how they can facilitate and promote more sustainable and robust urban regions. Buildings account for around 40 per cent of Norway's total energy consumption. It should be possible to reduce this figure significantly by constructing energy-efficient buildings and upgrading existing ones. The project focuses on the construction sector's role, as well as innovative energy solutions in homes, commercial buildings and neighbourhoods. The Oslo region is the group's focus area.

The working group called URBAN DEVELOPMENT concentrates on issues arising from climate change, public health and social differentiation in urbanization processes, all multi-sectoral policy areas. The formulation and design of these policy areas depend on knowledge processes, different measures and actions and organization. The group looks at how climate change, public health and social differentiation are adapted locally and organized in Norwegian municipalities.

In implementing the EU Water Framework Directive Norway has issued its own set of water management regulations (Forskrift om rammer for vannforvaltning – Vannforskriften). A comprehensive system of agencies is in place at the national, regional and local level to promote and facilitate good environmental standards in rivers and lakes, groundwater and coastal waters. At the same time, many of the key challenges of adapting to climate change are related to water – in the form of rising sea levels and sea temperatures, more extreme rainfall events and spring tides, heightened risk of erosion, landslides, floods and overflows. The working group called WAPABAT explores new opportunities and challenges for the many industries and activities involving water, coordination issues and participation opportunities in the current system of water management.

The final working group is called RUSSBYKLIM and brings the theme of the initiative into a Russian context. Russia has an extensive public administration and a large natural disaster response system, but the climate debate in the country is rather muted and the connection between climate change and human activity is not often acknowledged. The ability of Russian cities to accommodate climate change and lay plans which address vulnerability and risks associated with climate change are the areas of concern of the working group.

RUSSBYKLIM examines how local authorities work with government agencies at various levels in different sectors, with the business community and civil society to enable adaptation to climate change at the local level.

Theme Groups

Research at NIBR takes place in the different departments and thematic groups. The purpose of the theme groups, comprising researchers from two or more departments, is to provide

- An academic arena for specialization, competence building and innovative thinking across departments in line with NIBR's goal to deliver research of a high scientific standard.
- An arena where researchers can work together to formulate large, strategically important applications requiring the expertise of several departments

The following groups were prioritized in 2012

- **Democracy:** The purpose of this group is to build expertise at NIBR in a) democracy-promoting initiatives and schemes in Norway; b) democratic features of multi-ethnic societies (multi-ethnic states, migration, indigenous peoples); and c) in promoting democracy internationally
- **City:** This group seeks to enhance expertise at NIBR on cities, urbanization and place appeal. The theme challenges our ability to capitalize on different areas of expertise at NIBR in combination: migration and living conditions data; socio-cultural analysis; democracy and multi-level governance in cities; inclusion and exclusion in the city; cities' role in the economy and urban housing markets; and finally studies of sustainable urban development in the South.
- **Migration and Integration Research (MIR):** aims at strengthening capacity at NIBR on the challenges facing politics, policies, policy making, government administration and civil society arising from a changing multi-ethnic society. Central to the research is the question of how this type of change affects relations between the majority and minority populations, living conditions and organization of the immigrant population, indigenous peoples and national minorities. Transnational perspectives and relations between sending and receiving countries are key to NIBR's research in this field.
- **Climate and Environment:** works to expand NIBR's expertise on climate change, on ways to reduce greenhouse gas emissions and implications of extreme weather events. We work on projects related to local and international challenges, not least those related to international issues in China, India and Africa.
- **Health, including public health:** acts as a forum for academic discussions related to complex application

processes, as well as actively promoting competence building and networking.

International research

All departments at NIBR are involved in international research partnerships and we conduct studies in countries in Europe, Asia, Africa and Latin America. NIBR's unique strength lies in its ability to combine expertise on the Norwegian situation in areas such as regional and urban studies, government and democracy, with language skills and knowledge of other countries' political, social and cultural conditions. This creates opportunities to develop and undertake comparative studies within these fields, but also to draw on knowledge of Norwegian conditions in our research abroad. And as our research in Norway is empirical, often relying on data we have collected ourselves, our research outside Norway is usually based on data we have collected in collaboration with partner institutions. NIBR is engaged in joint research projects with several universities and research institutes in the Nordic countries, the rest of Europe and in all of the so-called BRICS countries, Brazil, Russia, India, China and South Africa. In 2012 we conducted studies in Bhutan, Brazil, Democratic Republic of the Congo, India, China, Nepal, Peru, Russia, Senegal, Tanzania, Ukraine, Vietnam and Saudi Arabia. NIBR's researchers are fluent in English, Spanish, Portuguese, French, Russian, Sami, Polish, Latvian, German, Hindi and several Eastern European languages. These linguistic skills allow us to gain a deep understanding of the countries where we conduct research.

NIBR is party to a number of European research networks, including

- European Co-operation in the Field of Scientific and Technical Research (COST)
- European Urban Research Association (EURA)
- Nordic Housing and Urban Research Partnership
- European Network for Housing Research
- Nordic Homelessness Research Network
- European Federation of National Organisations Working with the Homeless (FEANTSA)
- Regional Science Association (RSA)
- European Association of Development Research and Training Institutes (EADI)
- ESPON European Observation Network for Territorial Development and Cohesion

In addition to the international research described under each department, NIBR has an extensive portfolio of EU-funded projects, an expression of the weight NIBR places on international research partnerships. We participate in two joint projects funded under the EU's 7th Framework:

- “Urban Chances – City Growth and the Sustainability Challenge” comparing major cities in India, South Africa, Brazil and Peru, researchers from NIBR study among other things mobilization against urban inequality and citizen participation in Brazil and South Africa.
- “Climate Change and Urban Vulnerability in Africa”: Based on empirical studies undertaken in five African cities, this project aims to develop knowledge of methods and strategies for managing climate risk, countering social vulnerability and strengthening climate adaptation capacity and urban resilience at different levels. The project undertakes studies in Addis Ababa, Dar es Salaam, Douala, Ougagougou, and St Louis (Senegal).

NIBR has been an active partner of the European research programme ESPON (European Observation Network for Territorial Development and Cohesion) since 2002. Our involvement means that we contribute and have access to a wide-ranging European network of research establishments and scientists specializing in territorial studies and planning studies. The programme gives NIBR access, moreover, to important European research infrastructure, a common scientific platform in the form of a territorial database, cartographic tools, methodologies/models, typologies, concepts, etc. With the help of transnational comparative studies of European regions, the programme provides research-based knowledge for policy makers and planners in the field of territorial development in Europe. The programme’s membership stands currently at thirty-one countries and is funded by the European Regional Development Fund (ERDF). NIBR acts as national focal point for ESPON; NIBR is a partner in six of almost fifty ongoing projects, and lead partner in two of them. See www.espon.eu.

NIBR also contributes to two Interreg projects:

- “North Sea Skills Integration and New Technologies”, focusing on climate change and urban and housing planning, where issues related to water constitute a particular theme of interest (Interreg IVB North Sea Programme)
- “Climate Change: Impacts, Costs and Adaptation in the Baltic Sea Region”, which explores the challenges facing regions and municipalities from the most immediate changes in climate (Interreg IVB Baltic Sea Region)

The project “Nordic welfare states and the dynamics and effects of ethnic residential segregation” explores how policy in the Nordic welfare states impacts ethnic settlement patterns and the effects of ethnic segregation in four major Nordic cities. The project is funded by the New Opportunities for Research Funding Co-operation in Europe (NORFACE), a partnership of twelve European research councils.

NIBR has taken part in scientific work in the OECD on rural and territorial indicators and analyses since 1999, as the Norwegian delegate/contributor to the “Working Party on Territorial Indicators” (WPTI), one of three working groups under the Territorial Development Policy Committee.

This group is responsible for, among other things, the periodical *OECD Regions at a Glance*. NIBR is lead partner in a joint project with the Chinese Academy of Social Science in Beijing exploring “Capacity Building for Regional Sustainable Development: Evaluation, Policy Making and Planning”. The project has a comparative aspect in that Chinese regions are compared with regions in Europe and other OECD countries. OECD is contributing to this work.

CIENS Partnership

NIBR is a member of CIENS, a strategic research partnership composed of independent research institutes and the University of Oslo. The partnership is characterized by shared scientific strategies and research programmes, research and outreach collaboration, and co-location of more than 500 people in a modern, environmentally friendly building at the Research Park in Oslo (Forskningsparken). CIENS represents a significant resource in terms of knowledge and expertise, and works to strengthen society’s capacity to deal with the complex challenges at the crossroads between society and the environment.

Activities at CIENS are informed by the following values:

- Quality
- Innovation
- Teamwork
- Social relevance

The acronym ‘CIENS’ is composed of the initial letters of the centre’s English name: **O**slo **C**entre for **I**nterdisciplinary **E**nvironmental and **S**ocial **R**esearch. It is pronounced like the word ‘science’.

The following are members of CIENS:

CICERO
 Meteorological Institute
 Norwegian Institute for Urban and Regional Research (NIBR)
 Norwegian Institute for Air Research (NILU)
 Norwegian Institute for Nature Research (NINA)
 Norwegian Institute for Water Research (NIVA)
 Norwegian Water Resources and Energy Directorate (NVE)
 Institute of Transport Economics (TØI)
 University of Oslo



NIBR's Board 2012

NIBR's Board 2012

From left to right: Ottar Brage Guttelvik, Hilde Lorentzen (Director), Helge Renå (Deputy), Marit Ekne Ruud, Jan Sandal, Randi Kaarhus, Dag Gjestland and Guri Ulltveit-Moe

Chair	Jan Sandal	Cand. oecon
Vice Chair	Randi Kaarhus	Research Director, Norwegian University of Life Sciences
Board Member	Dag Gjestland	Special Advisor, University of Oslo
Board Member	Ottar Brage Guttelvik	Chief County Executive, Møre og Romsdal County Administration
Board Member	Guri Ulltveit-Moe	Deputy Director General, Ministry of the Environment
First Deputy	Signy Vabo	Assistant Professor, Oslo and Akershus University College of Applied Sciences
Second Deputy	Lillian Hatling	Senior Advisor, Centre of Competence on Rural Development
Staff Representative	Katja Johannessen	Researcher III, NIBR
Staff Representative	Marit Ekne Ruud	Researcher II, NIBR
Deputy Staff Representative	Helge Renå	Researcher III, NIBR
Deputy Staff Representative	Martin Lund-Iversen	Researcher III, NIBR

In compliance with NIBR's statutes the Norwegian Research Council appoints NIBR's board following nominations by:

Ministry of the Environment (1 seat)
 Ministry of Local Government and Regional Development (1 seat)
 Norwegian Association of Local Authorities (1 seat) and
 Norwegian Research Council (2 seats).

Two members are nominated by NIBR's staff.

Annual Report 2012

Excerpts from the Board's Annual Report

The nature of the activity

The Norwegian Institute for Urban and Regional Research (NIBR) is an independent research institute specializing in the social sciences to develop and communicate research-based knowledge of use to decision makers and the public. The Institute is a foundation, and headquarters are located in Oslo.

Status, performance and continued activity

As of year-end 2012, NIBR's contract portfolio, human resources and financial standing were sufficiently robust to warrant continued operations.

The Institute's income consists partly of the Research Council's basic allocation from and partly of external commissions and grants, mainly from the public sector contract market. The contract market is stable, and is expected to remain so looking ahead. However, the number of market players has increased considerably and NIBR is experiencing increased competition from consulting firms, universities and university colleges. The basic funding allocation for research institutes has changed little in recent years, and no major changes are expected in the future. NIBR must prepare itself for an increasingly challenging competitive environment in the time ahead.

NIBR's total turnover in 2012 was NOK 74.1 million, compared to NOK 71.6 million in 2011. Of this amount, income from contract research amounted to NOK 55.4 million, compared to NOK 52.9 million in 2011. The Research Council's basic allocation accounted for 22.4 per cent of turnover in 2012, which is almost the same as last year.

Annual provisions for future pension liabilities in performance-based pension schemes managed by the Norwegian Public Service Pension Fund have had an adverse effect on performance over the past decade. As of 31 December 2012,

accumulated capitalised pension costs amounted to NOK 7.4 million. Of this amount, NOK 5.3 million was transferred in 2012. NIBR will doubtless need to transfer significant sums annually to cover pension liabilities also in the future. The estimate for 2013 is around NOK 1.3 million in increased turnover.

After taking this into account, NIBR's result in 2012 was minus NOK 2,681,473 after tax. The shortfall is made good through a reduction of the Institute's accumulated equity.

Working environment, equality and external environment

NIBR's Working Environment Committee (AMU) consists of six persons, three from the management and three from the academic staff. The committee is led by a member of the academic staff. The committee held five meetings in 2012 and is monitoring the institute's system of internal control (the IK Document) by submitting the document to an annual audit.

Illness-related absence was 6.2 per cent in 2012. No work-related injuries or accidents were recorded in 2012. NIBR's occupational health scheme is based on a preventative approach to health in the workplace.

There is a satisfactory gender balance among staff at NIBR. Women accounted for 51 per cent of labour productivity at NIBR in 2012. The proportion of women in executive management positions was 62.5 per cent in 2012. In other words, the male/female ratio in NIBR's management team is 4:8. NIBR's Board is composed of three men and four women.

We take a pro-active, targeted stance on equality and prevention of discrimination at NIBR. NIBR has a set of ethical guidelines aimed at preventing unwanted behaviour, including discriminatory behaviour.

Activity at NIBR has no noticeable harmful effect on the external environment. NIBR satisfies the criteria of the environmental certification scheme (Miljøfyrtårn) and is therefore certified as an environmentally friendly establishment. The certificate is conditional on a pro-active environmental policy.



Annual Accounts 2012 *Highlights*

All figures in NOK 1 000

OPERATING REVENUE	2012	2011
Ordinary project revenue	55 464	52 912
Grants for research programmes	0	0
Annual Basic Allocations	16 619	16 938
Allocations for national tasks and infrastructure	1 302	1 215
Publication sales revenue	24	74
Other operating revenue	706	539
SUM OPERATING REVENUE	74 115	71 678
OPERATING EXPENSES		
Salaries	52 363	50 563
Direct project costs	14 158	10 967
Ordinary depreciation	476	584
Other operating costs	9 919	9 813
SUM OPERATING EXPENSES	76 916	71 927
OPERATING PROFIT	(2 801)	(249)
Financial items, net	119	175
OPERATING RESULT BEFORE TAX	(2 682)	(74)
Taxes	-	47
NET PROFIT FOR THE YEAR	(2 682)	(27)
BALANCE 31 December 2012		
ASSETS	2012	2011
Fixed assets	9 875	10 267
Current assets	35 884	36 521
SUM ASSETS	45 759	46 788
EQUITY AND LIABILITIES		
Issued equity	5 000	5 000
Retained earnings	8 028	10 709
Pension liabilities	7 403	5 292
Current liabilities	25 328	25 787
SUM EQUITY AND LIABILITIES	45 759	46 788

Competency Audit and Clients

COMPETENCY AUDIT	2012		2011		2010	
Primary employment – staff	72		70		71	
Primary employment – researchers	59		57		58	
Researcher FTEs (Full-Time Equivalents)	57		57		59	
Researchers with PhD / % of researchers in primary employment	25	42%	23	40%	22	38%
Researchers with F1 competence / % of full-time staff	12	20%	12	21%	10	17%

NIBR has a multidisciplinary staff comprising of

- Sociologists
- Political Scientists
- Economists
- Demographers
- Anthropologists
- Geographers
- Architects
- Civil Engineers

The majority of NIBR's researchers are sociologists and political scientists. NIBR favours a multi-disciplinary approach in its own projects and projects conducted with other institutes and organizations and promotes multi-disciplinarity through partnerships with other institutes.

The largest clients are

- Norwegian Research Council
- Ministry of Local Government and Regional Development
- Ministry of Foreign Affairs, NORAD
- Ministry of the Environment
- Ministry of Health and Care Services
- Ministry of Children, Equality and Social Inclusion
- Local Governments

Funding from international sources is growing and includes

- EU institutions and bodies
- Foreign governments
- Other international organisations

Clients

NIBR undertakes action-oriented and decision-relevant research, studies and assessments for clients in the public and private sector and competes for research contracts nationally and internationally.

ANNUAL BASIC ALLOCATIONS AND OTHER FINANCING (IN NOK 1 000) PERCENTAGE OF TOTAL TURNOVER

	2012		2011		2010	
Annual basic allocation, Norwegian Research Council	16 619	22%	12 440	17%	11 355	17%
Strategic Institute Initiative from Norwegian Research Council (SIS)	5 120	7%	3 992	6%	4 956	8%
Norwegian Research Council research programmes	16 400	22%	15 440	21%	18 037	27%
Ministries and subordinate bodies	19 530	26%	24 654	34%	17 700	26%
Municipal sector	5 982	8%	5 552	8%	5 978	9%
International	5 479	7%	5 204	8%	5 070	8%
Private sector	100	0,1%	0		737	1%

	2012	2011	2010
Turnover	74 100	71 700	66 900
Turnover per researcher FTE	1 300	1 258	1 124
Annual basic grant per researcher in full-time position	282	288	281

Communication and Outreach Activity

NIBR has a national responsibility for dissemination and user-oriented information. Academic staff take an active part in public debates on issues of relevance to the Institute's research priorities. NIBR endeavours to maintain a balanced programme of general purpose information, information directed at clients, the media and users, and publishing work in scientific periodicals and journals nationally and internationally.

In 2012, NIBR entered into a partnership with the online newspaper *Forskning.no* which is visited each month by half a million readers. During the year NIBR also began to make use of social media such as Facebook and Twitter as a strategic tool to communicate research. We also publish newsletters on a regular basis which are circulated by e-mail to about 2,000 subscribers.

NIBR participates every autumn in Forskningstorget (Research Market Day) in Oslo together with the other institutes at CIENS. The event is part of the annual, nationwide festival Forskningsdagene (Research Days), to show schools and other interested parties how research is done in practice.

Reports, articles etc.

Most of the research projects at NIBR are reported in our own series of publications. In 2012, we published twenty-nine reports, thirteen working papers and six joint reports.

Reports and joint reports are published in print but are also available in digital form; working papers are only published in PDF format for reading or downloading from the Institute's web site. Reports and joint reports carry Norwegian and English summaries.

A list of reports, joint reports and working papers can be found at www.nibr.no/en: click on *Publications*.

In addition to NIBR's series, research staff published extensively in 2012 with fifty-four articles and anthologies in peer reviewed scientific publications and specialist anthologies, eleven articles in other academic journals, compendia and article collections. Researchers wrote and/or edited three externally published books and wrote twenty-nine feature articles, reviews, comments, and the like in magazines, journals and the press.

Outreach Award 2012

The NIBR Outreach Award for 2012 went to the researchers behind NIBR Report 2012:7 *Festival Municipalities*; Guri Mette Vestby, Ragnhild Skogheim and Roar Samuelsen.

Academic conferences

National and international conferences offer a platform where researchers can bring the results of their work to the attention of key audiences. NIBR's research staff read nineteen papers at international and national conferences in 2012 and gave eighty-three lectures and talks at Norwegian and international specialist seminars and conferences.

NIBR organises and hosts conferences and seminars alone and in collaboration with other research and specialist centres. The following arrangements were organized by NIBR alone or in partnership in 2012:

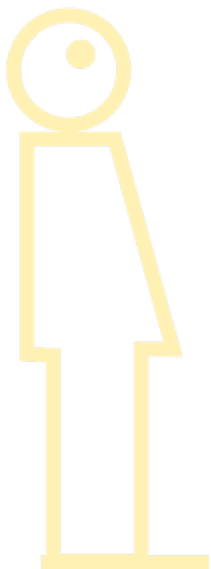
- NIBR/Chance2Sustain, University of Oslo: Informality and Urban Governance in Cities in South Africa, London 24.04.2012 (Berit Aasen, David Christoffer Jordhus-Lier)
- NIBR and University of Oslo: The Changing Nature of Work in the Hotel Business – A Workplace Under Global Stress, Oslo 14.06.2012 (David Christoffer Jordhus-Lier)
- NIBR and ESPON: NORBA Final Conference, Riga, 30–31.08.2012 (Olaf Foss)
- NIBR and University of Oslo: The Politics of Environmental Challenges in India, Oslo 06.09.2012 (Guro Aandahl)
- NIBR: Celebratory Seminar – Look to the North More Often, Oslo 14.11.2012 (Leif Arne Heløe, Ottar Brox, Tore Hansen)
- NIBR/CIRD (China Institute for Reform and Development): The 8th Sino-Norwegian Social Policy Forum, Haikou, China, 1–2.12.2012 (Trine Monica Myrvold, Arne Tesli)

Academic and information meetings

NIBR Forum is the name of NIBR's public seminar programme where we invite participants to discuss topical issues based on research at NIBR.

The Forum had five arrangements in 2012 with the following themes:

- Handling Conflict in Compact City Development – International Experiences
- The Coordination Reform from a Researcher's Viewpoint – Challenges and Opportunities
- International Perspectives on Water Management and the EU Water Framework Directive
- Book launch: *Det regionale Norge 1950 til 2050* (*Regional Norway 1950 to 2050*)
- Rio de Janeiro: *Hva blir den 'olympiske' effekten?* (*What will the 'Olympic effect' be?*)



NIBR's Library

NIBR's specialist library contains literature of relevance to the Institute's field of research. At present we have about 11,000 titles. The library also subscribes to about 125 journals, many in digital form. The Library holds twelve newspapers in hard copies, and is connected to the full-text database Retriever for Norwegian newspapers.

Apart from the researchers' use of the library's collections, the library can get hold of specific works on request, make copies of articles, and help with searches in the databases and other sources of information on the Internet.

The library is party to the consortia agreements on access to Web of Knowledge, an academic citation indexing and search service, and Retriever for Norwegian newspapers and media outlets.

The library has an important responsibility to register and report scientific publications to CRISStin (Current Research Information System in Ireland) / Norsk vitenskapsindeks (Norwegian Science Index).

Published work and dissemination	2012	2011	2010
Articles in peer-reviewed journals and anthologies	54	29	23
Scientific monographs	0	1	3
Articles in other academic journals and books	11	9	19
Books and other published work	3	6	5
Op-eds, feature articles, commentaries and book reviews	29	23	12
NIBR Reports	35	36	31
NIBR Working Papers	14	16	12
Papers at academic conferences	19	23	41



Contact Information

Head of Communications

Inger Lise Næss
inger.lise.nass@nibr.no

Head of Library

Inger-Helene Wang Andresen
inger.w.andresen@nibr.no

To order publications

nibr@nibr.no

NIBR's In-house Publications 2012

Publications are shown in alphabetical order by project leader's surname.

NIBR Reports

Barlindhaug, Rolf, Elin Børrud, Bjørg Langset and Berit Nordahl

New dwellings in big cities. Who buys and what kind of housing standards are supplied?
NIBR Report 2012:31

Bjørnsen, Marte and Steinar Johansen

Svalbard: Society and industrial affairs 2012
NIBR Report 2012:24

Blåka, Sara

Commitment, openness and attitudes towards mental health and psychiatric disorders Status after The National Action Program on Mental Health
NIBR Report 2012:9

Gotaas, Nora

Establishing and initiating self-help groups
NIBR Report 2012:8

Helgesen, Marit Kristine and Hege Hofstad

Regional and local health promo organization and coordination
NIBR Report 2012:13

Helgesen, Marit Kristine

Good with people first and foremost. Final report from an evaluation project
NIBR Report 2012:17

Helgesen, Marit Kristine and Gro Sandkjær Hanssen

How do legal and pedagogical steering instruments affect the priorities and development in municipal health and care services?
NIBR Report 2012:26

Holm, Arne

Dignified housing in mental health work
NIBR Report 2012:2

Holm, Arne and Marte Bjørnsen

Provision of social housing in the municipality of Fjell. An evaluation
NIBR Report 2012:12

Holm, Arne, Siri Nørve and Eva Karvel

Lifts and levels of living
NIBR Report 2012:19

Holm, Arne and Trine Monica Myrvold

The responsibilities and roles of the administrative museums and Norwegian Institute for Cultural Heritage Research (NIKU) in the management of the archaeological heritage
NIBR Report 2012:30

Kvinge, Torunn, Rolf Barlindhaug, Camilla Lied and Marit Ekne Ruud

Urban planning and residential segregation
NIBR Report 2012:11

Lied, Camilla, Helge Renå and Per Medby

Social housing work in the Municipality of Nedre Eiker
NIBR Report 2012:15

Medby, Per, Arne Holm and Kim Christian Astrup

Social housing models
NIBR Report 2012:18

Nørve, Siri

The planning of social housing and the municipal planning system
NIBR Report 2012:25

Onsager, Knut, Lene Schmidt, Guri Mette Vestby, Frants Gundersen and Kjetil Sørli

Viable coastal communities. Place and economic development in the municipality of Skjervøy
NIBR Report 2012:23

Renå, Helge, Camilla Lied and Per Medby

Social Housing Work in the Municipality of Holmestrand
NIBR Report 2012:14

Risan, Lars and Hilde Hatleskog Zeiner

General planning and academic competence in Norwegian municipalities
NIBR Report 2012:6

Ruud, Marit Ekne, Siri Nørve and Eva Karvel

The significance of having a home to young adults in vulnerable circumstances
NIBR Report 2012:27

Ruud, Marit Ekne and Siri Nørve

When should I leave home? Experience of acquiring suitable housing for young people with disabilities
NIBR Report 2012:28

Schmidt, Lene and Jon Guttu

Small homes – Universal design, domestic arrangements and usability
NIBR Report 2012:1

Skålnes, Sigrid and Mikkel Berg-Nordlie

Gåatome – laanta jñ juhtemegeajnoeh – Changes to the boundaries of reindeer herding districts in the 1990s in Nordland and Nord-Trøndelag
NIBR Report 2012:10

Søholt, Susanne, Aadne Aasland, Knut Onsager and Guri Mette Vestby

"Why we stay here" – Immigrants remaining in rural Norway
NIBR Report 2012:5

Sørli, Kjetil, Marit Aure, Bjørg Langset

Why move, why stay? Migration and staying motives 1999–2006
NIBR Report 2012:22

Tjerbo, Trond, Per Olaf Aamodt, Inger Marie Stigen, Marit Kristine Helgesen, Terje Næss, Clara Åse Arnesen, Håkon Høst and Nicoline Frølich

Staffing the care sector: The Qualifications Boost 2015 Action Plan and its implementation
NIBR Report 2012:3

Tjerbo, Trond, Hilde Hatleskog Zeiner and Marit Kristine Helgesen

Mental health work in Norwegian municipalities, 2012
NIBR Report 2012:4

Vestby, Guri Mette, Roar Samuelsen and Ragnhild Skogheim

Festival Municipalities. Interaction between local authorities and festivals
NIBR Report 2012:7

Vestby, Guri Mette and Marit Ekne Ruud

Youth and local community development How are young people involved at the county level?
NIBR Report 2012:16

Aasland, Aadne, Siri Bjerkreim Hellevik and Berit Aasen

Must have more: Targeting immigrants in HIV-related work in Norway
NIBR Report 2012:29

Joint Reports

Isobel Anderson, Evelyn Dyb and Siri Ytrehus

Meeting the needs of homeless people: Interprofessional work in Norway and Scotland. A pilot study
Joint Report NIBR/Diakonhjemmet University College/University of Sterling 2012

Harvold, Kjell and Terje Skjeggedal

Inter-authority cooperation in local planning
Joint Report NIBR/Eastern Norway Research Institute 2012

Klausen, Jan Erling, Marthe Indset, Geir Møller, Eivind Smith and Hilde Hatleskog Zeiner

Central and local levels of government on equal footing
Joint Report NIBR / Telemark Research Institute 2012

Lund-Iversen, Martine, Knut Bjørn Stokke, Eli Rinde, Frithjof Moy and Eli Havnen

Knowledge-based planning and management in the coastal zone – A focus on piece-by-piece development and utilizations and impacts on marine habitats, fisheries and underwater heritage
Joint Report NIBR, Norwegian University of Life Sciences (UMB), Norwegian Institute for Water Research (NIVA), HI 2012

Shevliakov, Ihor and Aadne Aasland

The Norwegian-Ukrainian Cooperation Project on Local Development: Efficiency Networks in Service Delivery
Joint Report NIBR / Norwegian Association of Local and Regional Authorities (KS) / Association of Ukrainian Cities (AUC) / International Centre for Policy Studies (ICPS) 2012

Søholt, Susanne, Anne Mette Ødegård, Brit Lynnebakke and Line Eldring

When the international labour market meets the national housing market
Joint Report NIBR/FAFO 2012

NIBR Working Papers

Barlindhaug, Rolf and Kim Christian Astrup

Housing affordability
NIBR Working Paper 2012:110

Barlindhaug, Rolf, Arne Holm, Fredrik Holth and Berit Nordahl

Housing developments with elements of affordable housing. Opportunities and constraints in municipal housing policy
NIBR Working Paper 2012:114

Brevik, Ivar

Characteristics of young users of home-based services
NIBR Working Paper 2012:106

Harvold, Kjell

Sustainable urban water management in Tønsberg
NIBR Working Paper 2012:109

Kann, Frode, Rolf Barlinhaug, Dag Juvkam, Per Medby and Aud Tennøy

Prospective development of the Gjersrud-Stensrud area? Factors and uncertainties bearing on the assessment
NIBR Working Paper 2012:115

Kleven, Terje

Planning research and planning education in Norway
NIBR Working Paper 2012:111

Kvinge, Torunn, Bjørg Langset and Siri Nørve

What is the impact of quality stipulations on construction costs and housing availability?
NIBR Working Paper 2012:112

Naustdalslid, Jon and Joseph A. Kuzilawa

Review of PITRO III
NIBR Working Paper 2012:103

Vestby, Guri Mette and Kjetil Sørle

Municipality of Ringerike: Demographic trends and settlement patterns
NIBR Working Paper 2012:107

Wiig, Henrik

Land and women empowerment - Methodology and summary report of the PeruLandGender household survey
NIBR Working Paper 2012:102

Wiig, Henrik

Do joint land titles induce Peruvian women to take part in decision-making?
NIBR Working Paper 2012:104

Wiig, Henrik and Jorge Balarezo

The mighty few vs. the silent majority – Barriers to resource extraction for poverty reduction in Peru
NIBR Working Paper 2012:105

Winsvold, Marte, Jan Erling Klausen, Inger-Lise Saglie and Knut Bjørn Stokke

Adaptation to climate change and urban planning in four Norwegian cities
NIBR Working Paper 2012:101

External Publications 2012

Scientific articles in journals and series

Berg-Nordlie, Mikkel and Arild Schou: "Who are Indigenous – And How Should it Matter? Discourses on Indigenous Rights in Norway and Nepal." *Ethnopolitics Papers*, 2012, 2(13) ISSN 2048-075X

Braathen, Einar, Heidi Attwood and Julian May: "The Role of Politics in Telecentres: Cases from South Africa." *International Journal of E-Politics*, 2012, 3(3): 1–20 ISSN 1947-9131

Feiring, Marte: "Rehabilitation – between management and knowledge practices: An historical overview of public action in Norwegian welfare reforms." *Policy & Society: Journal of public, foreign and global policy*, 2012, 31(2): 119–129 ISSN 1449-4035

Glavin, Guro, Kristian Stokke and Henrik Wiig: "The Impact of Women's Mobilisation: Civil society organisations and the implementation

of land titling in Peru." *Forum for Development Studies*, 2013, 40(1): 129–152 ISSN 0803-9410

Hanssen, Gro Sandkjær: "Negotiating Urban Space: The Challenge of Political Steering in Market- and Network-oriented Urban Planning." *Scandinavian Political Studies* 2012, 35(1): 22–47 ISSN 1467-9477

Harvold, Kjell and Irene Nordahl: "Planning in Rurbania: Rural policy and the planning system in Norway." *Town Planning Review* 2012, 83(2): 213–232 ISSN 0041-0020

Hellevik, Siri Bjerkeim: "The pattern and challenges to multisectoral HIV/AIDS coordination in Tanzania." *International Review of Administrative Sciences* 2012, 78(3): 554–575 ISSN 0020-8523

Hofstad, Hege: "Compact city development: High ideals and emerging practices." *European Journal of Spatial Development* 2012, article no. 49 ISSN 1650-9544

Jones, Peris Sean: "Mind the gap: Access to ARV medication, rights and the politics of scale in South Africa." *Social Science and Medicine* 2012, 74(1): 28–35 ISSN 0277-9536

Jones, Peris Sean: "Powering up the people? The politics of indigenous rights implementation: International Labour Organisation Convention 169 and hydroelectric power in Nepal." *International Journal of Human Rights* 2012, 16(4): 624–647 ISSN 1364-2987

Jones, Peris Sean and Siri Bjerkeim Hellevik: "Regional HIV/AIDS Work: An Added Value?" *Global Health Governance* 2012, Spring issue ISSN 1939-2389

Jordhus-Lier, David Christoffer: "Public Sector Labour Geographies and the Contradictions of State Employment." *Geography Compass* 2012: 6(7): 423–438 ISSN 1749-8198

Jordhus-Lier, David Christoffer: "The Geographies of community-oriented unionism: scales, targets, sites and domains of union renewal in South Africa and Beyond." *Transactions of the Institute of British Geographers* 2012 38(1): 36–49 ISSN 1475-5661

Klausen, Jan Erling and Per Gunnar Røe: "Governance and change on the urban fringe – special issue of *Urban Research & Practice*" *Urban Research & Practice* 2012, 5(1): 1–5 ISSN 1753-5069

Kuznetsov, Vladimir, Aadne Aasland, Tatiana Balaeva and Andrei Grjibovski: "Analysis of understanding of international questionnaires by Russian people during population surveys on socially important diseases" *Human Ecology* 2012, 18(8): 25–32 ISSN 1728-0869

Millstein, Marianne and David Christoffer Jordhus-Lier: "Making communities work? Casual labour practices and local civil society dynamics in Delft, Cape Town" *Journal of*

Southern African Studies 2012, 38(1): 183–201 ISSN 0305-7070

Orderud, Geir Inge and Marte Winsvold: "The role of learning and knowledge in adapting to climate change: a case study of Norwegian municipalities" *International Journal of Environmental Studies* 2012, 69(6): 946–961 ISSN 0020-7233

Stokke, Knut Bjørn and Marthe Indset: "Møtet mellom EUs vanddirektiv og statlig sektoransvar. Helhetlig vannforvaltning gjennom konsensusbygging og nettverk?" ["When the EU Water Framework Directive meets the government's sectoral responsibilities. Integrated water management by consensus-building and networking?"] *Kart og Plan* 2012, 72(4): 278–288 ISSN 0047-3278

Søholt, Susanne; Marit Ekne Ruud and Einar Braathen: "A question of social sustainability: Urban interventions in critical neighbourhoods in Portugal and Norway." *Urban Research and Practice* 2012, 5(2): 256–272 ISSN 1753-5069

Aasland, Aadne; Åse Berit Grødeland and Heiko Pleines: "Trust and informal practice among elites in East Central Europe, South East Europe and the West Balkans." *Europe-Asia Studies*, 2012, 64(1): 115–143 ISSN 0966-8136

Aasland, Aadne, Arne B. Grønningseter, Peter Meylakh, Elise Klouman, Tatiana Balaeva, Hans Blystad and Andrei Grjibovski: "The governance of HIV/AIDS prevention in North-West Russia" *Human Ecology* 17(12): 49–54 ISSN 1728-0869

Scientific articles in anthologies

Astrup, Kim Christian: Boligprisutviklingen i Norge – forventningens rolle [Trends in property prices. The role of expectations]. In: *Boligmarked og boligpolitikk*. Akademika forlag 2012: 39–55 ISBN 978-82-321-0036-1

Astrup, Kim Christian: Tvangssalg av bolig i Norge [Forced property sales in Norway]. In: *Boligmarked og boligpolitikk*. Akademika forlag 2012: 211–232 ISBN 978-82-321-0036-1

Barlinhaug, Rolf: Boligøkonomiske virkemidler – kjennetegn og utfordringer [Financial house building incentives – Characteristics and challenges]. Akademika forlag 2012: 193–210 ISBN 978-82-321-0036-1

Barlinhaug, Rolf: Urbane boligmarkeder [Urban housing markets]. In: *Boligmarked og boligpolitikk*. Akademika forlag 2012: 27–71 ISBN 978-82-321-0036-1

Dyb, Evelyn: Lokal boligsosial samstyring [Local governance of social housing]. In: *Boligmarked og boligpolitikk*. Akademika forlag 2012: 253–273 ISBN 978-82-321-0036-1

Falleth, Eva and Gro Sandkjær Hanssen: Medvirkning i planlegging [Participation in planning]. In: *Utfordringer for norsk planlegging – kunnskap, bærekraft, demokrati*. Cappelen Damm Akademisk 2012: 186–203 ISBN 978-82-7634-901-6

- Guttu, Jon:** Shifts in planning ideology and consequences for residential green areas. In: Mark Luccarelli and Per Gunnar Røe (eds.): *Green Oslo – Visions, Planning and Discourse*. Ashgate 2012 ISBN 978-1-4094-3896-0
- Guttu, Jon and Lene Schmidt:** Nye boliger i et kvalitetsperspektiv [New homes in a quality perspective]. In: *Boligmarked og boligpolitikk*. Akademika forlag 2012: 141–167 ISBN 978-82-321-0036-1
- Hansen, Stig Jarle:** Private security, maritime protection and surveillance in Somaliland. In: *Private Security – Market responses to piracy, terrorism and waterborne security risks in the 21st century*. Routledge 2012: 113–125 ISBN 978-0-415-68862-8
- Hanssen, Gro Sandkjær and Eva Falleth:** Medvirkning i planlegging [Participation in planning]. In: Aarsæther, N., E. Falleth, T. Ringholm and R. Kristiansen (eds): *Utfordringer for norsk planlegging – kunnskap, bærekraft, demokrati*. Kristiansand: Høyskoleforlaget, 2012, chap. 11 ISBN 9788276349016
- Hanssen, Gro Sandkjær, Jan Erling Klausen and Ove Langeland:** Innledning [Introduction]. In: *Det regionale Norge 1950 til 2050*. Abstrakt forlag 2012: 11–23 ISBN 978-82-7935-329-4
- Hanssen, Gro Sandkjær, Jan Erling Klausen and Ove Langeland:** Regionene mot 2050 [The regions towards 2010]. In: *Det regionale Norge 1950 til 2050*. Abstrakt forlag 2012: 335–354 ISBN 978-82-7935-329-4
- Hanssen, Gro Sandkjær, Per Kristen Mydske and Elisabeth Dahle:** Regionenes rolle i arbeidet med å tilpasse samfunnet til framtidens klimaendringer [The role of the regions in readying society to meet a changing climate]. In: *Det regionale Norge 1950 til 2050*. Abstrakt forlag 2012: 281–313 ISBN 978-82-7935-329-4
- Hanssen, Gro Sandkjær, Jo Saglie and Eivind Smith:** KS i det norske flernivådemokratiet [Norwegian Association of Local and Regional Authorities in Norwegian multi-tier democracy]. In: *Det norske flernivådemokratiet*. Abstrakt forlag 2012: 311–339 ISBN 978-82-7935-321-8
- Hanssen, Gro Sandkjær and Signy Irene Vabo:** Sykehjem til alle? Om nasjonale partipolitiske mål og lokale tilpasninger [A nursing home place for everyone? On the policies of national political parties and adaptations to local needs]. In: *Det norske flernivådemokratiet*. Abstrakt forlag 2012: 137–166 ISBN 978-82-7935-321-8
- Helgesen, Marit Kristine:** Styring av folkehelsepolitikk i relasjonen mellom stat, fylkeskommuner og kommuner [Governance of public health policy in the relationship between state, county and local authorities]. In: *Det regionale Norge 1950 til 2050*. Abstrakt forlag 2012: 257–279 ISBN 978-82-7935-329-4
- Henningsen, Erik and Guri Mette Vestby:** Identitet og tilhørighet: mennesker og steder [Identity and belonging: People with places]. In: *Det regionale Norge 1950 til 2050*. Abstrakt forlag 2012: 93–111 ISBN 978-82-7935-329-4
- Johannessen, Katja:** Bostedsløshet som livsstil [Homelessness as a way of life]. In: *Boligmarked og boligpolitikk*. Akademika forlag 2012: 233–252 ISBN 978-82-321-0036-1
- Klausen, Jan Erling:** Økosystembasert regionalinndeling [Ecosystem-based regional divisions]. In: *Det regionale Norge 1950 til 2050*. Abstrakt forlag 2012: 315–332 ISBN 978-82-7935-329-4
- Langeland, Ove:** Regioner og regionalisering [Regions and regionalization]. In: *Det regionale Norge 1950 til 2050*. Abstrakt forlag 2012: 25–37 ISBN 978-82-7935-329-4
- Langeland, Ove and Torunn Kvinge:** Globalisering og regionalisering [Globalization and regionalization]. In: *Det regionale Norge 1950 til 2050*. Abstrakt forlag 2012: 177–204 ISBN 978-82-7935-329-4
- Medby, Per:** Det norske leiemarkedet [The Norwegian rental market]. In: *Boligmarked og boligpolitikk*. Akademika forlag 2012: 73–89 ISBN 978-82-321-0036-1
- Medby, Per:** Kommunal utleiesektor i Norge [Municipal rental sector in Norway]. In: *Boligmarked og boligpolitikk*. Akademika forlag 2012: 169–190 ISBN 978-82-321-0036-1
- Nordahl, Berit Irene:** Boligforsyning som eiendomsutvikling [Housing supply as property development]. In: *Boligmarked og boligpolitikk*. Akademika forlag 2012: 117–139 ISBN 978-82-321-0036-1
- Nordahl, Berit Irene:** Boligpolitikken og markedet [Housing policy and the market]. In: *Boligmarked og boligpolitikk*. Akademika forlag 2012: 21–37 ISBN 978-82-321-0036-1
- Nordahl, Berit Irene:** Kommunens rolle i boligforsyningen – perspektiver og praksis [The role of the municipalities in housing supply – Perspectives and practice]. In: *Boligmarked og boligpolitikk*. Akademika forlag 2012: 93–116 ISBN 978-82-321-0036-1
- Onsager, Knut:** Regional nærings- og sektorutvikling – før, nå og i framtid [Regional business and sector development – past, present and future]. In: *Det regionale Norge 1950 til 2050*. Abstrakt forlag 2012: 41–66 ISBN 978-82-7935-329-4
- Orderud, Geir:** Trust and Distrust: Culture finding its way into economics or the other way round? In: *Encounters and Engagements between Economic and Cultural Geography*. Springer 2012: 103–122 ISBN 978-94-007-2974-2
- Ruud, Marit Ekne:** Områdeløft – bidrag til utjevning av boforhold og levekår? [Area regeneration – Contribution standardization of housing and living conditions?] In: *Boligmarked og boligpolitikk*. Akademika forlag 2012: 299–316 ISBN 978-82-321-0036-1
- Stokke, Knut Bjørn, Martin Lund-Iversen and Bjørn Hersoug:** Interkommunalt plansamarbeid i kystsonen: Kysten er klar [Inter-authority cooperation on coastal zone planning. The coast's clear]. In: *Kampen om plass på kysten: interesser og utviklingstrekk i kystsoneplanleggingen*. Universitetsforlaget 2012: 102–118 ISBN 978-82-150-2024-2
- Søholt, Susanne:** Innvandrerbefolkningen og boligmarkedet [Immigrant population and the housing market]. In: *Boligmarked og boligpolitikk*. Akademika forlag 2012: 275–298 ISBN 978-82-321-0036-1
- Sørli, Kjetil:** Demografi og migrasjon [Demography and migration]. In: *Det regionale Norge 1950 til 2050*. Abstrakt forlag 2012: 115–146 ISBN 978-82-7935-329-4
- Tjerbo, Trond:** Strukturendringer i sykehussektoren – nåværende og fremtidige dilemmaer, konflikter og politikk [Structural changes in the hospital sector – current and future dilemmas, conflicts and politics]. In: *Det regionale Norge 1950 til 2050*. Abstrakt forlag 2012: 237–255 ISBN 978-82-7935-329-4

Academic books, textbooks and other independent publications

Nordahl, Berit Irene (ed.): *Boligmarked og boligpolitikk [Housing market and housing policy]*. Trondheim: Akademika forlag, 2012 ISBN 978-82-321-0036-1

Hanssen, Gro Sandkjær, Jan Erling Klausen and Ove Langeland (eds): *Det regionale Norge 1950 til 2050 [Regional Norway 1950 to 2050]*. Oslo: Abstrakt forlag, 2012 ISBN 978-82-7935-329-4

Øverland, Indra and Mikkel Berg-Nordlie: *Bridging Divides: Ethno-Political Leadership among Russian Sámi*. Oxford: Berghahn Books, 2012 ISBN 978-08-5745-667-0

Chapters and articles in academic books, textbooks, conference proceedings and academic journals

Hanssen, Gro Sandkjær, Ulla Higdem and Wibeke Børresen Groppen: "Framsyn, trangsyn eller vidsyn?" ["Foresight, near sight or wide sight?"]. *PLAN. Tidsskrift for samfunnsplanlegging, bolig og byplan og regional utvikling*, 2012 (5): 44–49 ISSN 0805-083X

Heløe, Leif Arne: "Fra tanntrekker til helsearbeider. Tilbakeblikk på utviklingen av tannpleien i Nord-Norge" ["From tooth extractor to health-care worker. Looking back at the development of dentistry in Northern Norway"], in Christian Fangel (ed.): *Pågangsmot og optimisme – Helsearbeid i Nord-Norge 1945–70*. Oslo: Z-forlag, 2012 ISBN 978-82-93187-04-2

Heløe, Leif Arne: "Harstadværing – holdninger, omdømme og politikk" ["Natives of Harstad – Attitudes, reputation and politics"], in Sigurd Stenersen (ed.): *Årbok for Harstad 2012*. Harstad: Harstad historielag, 2012, s. 3-9 ISBN 978-82-994286-1-3

Heløe, Leif Arne: "To kongebesøk" ["Two royal visits"], in Einar Furu (ed.): *Årbok for Bjarkøy 2012*. Harstad: Bjarkøy historielag, 2012, s. 96-102

Langeland, Ove and Torunn Kvinge: "ESaTDOR – European Seas and Territorial Development, Opportunities and Risks". Draft Final Report, www.espon.eu, 2012

Langeland, Ove, Jan Erling Klausen, Marte Winsvold: "CLIMATE CHANGE IMPACTS, COSTS AND ADAPTATION IN THE BALTIC SEA REGION". Final Report, www.baltica.org, 2012

Orderud, Geir Inge and Jing Luo: "The Environmental Society and Fairness and Justice", in Eva Cudlinova, Miloslav Lapka, and James S. Rikoon (eds.): *Towards an Environmental Society*. Prague: Karolinum Press, 2012, 44–75
ISBN 987-80-246-2092-3

Orderud, Geir Inge: "Trust and distrust: culture finding its way into economics or the other way round?", in Barney Warf (ed.): *Encounters and Engagements between Economic and Cultural Geography*. Berlin: Springer, 2012, 103–122
ISBN 978-94-007-2975-9

Sørli, Kjetil and Ann Ragnhild Broderstad: "Bo- og flyttetrender i norsk-samiske kommuner gjennom 40 år i relasjon til sysselsetting" ["Residential stability and re-location trends in Norwegian-Sami municipalities over 40 years in relation to employment"], in Jon Todal (ed.): *Samiske tall forteller 5. Guovdageaidnu: Sami allaskuvla*, 2012, s. 44–71
ISBN 978-82-7367-032-8

Sørli, Kjetil and Knut Bjørn Stokke: "Kystutvikling på Lovund – fra krise til suksess" ["Coastal development on Lovund – From crisis to success"], in Hans Petter Moland (ed.): *Rapport fra det 3. Lovundseminaret 17–18. juni 2011*. Lovund: Finnblåsa forlag, 2012, s. 11–26

Aandahl, Guro: "Book review: Sharing water: Problems, conflicts and possible solutions – the case of Kampala", *Forum for Development Studies*, 2012, 39 (1): 139–146
ISSN 0803-9410

Leaders, comments, reviews, feature articles etc. in journals and newspapers

Berg-Nordlie, Mikkel: "Om sameting og separatismeanklager i Russland" ["On the Sami Parliament and allegations of separatism in Russia"], *Nordlys* 21.08.2012

Brox, Ottar: "Hva gjør EØS med oss?" ["What's the EES doing to us?"], *Aftenposten* 10.02.2012

Brox, Ottar: "Overinvestering som politikk" ["Overinvestment as policy"], *Klassekampen* 29.11.2012

Brox, Ottar: "Fattigdom i bygd og by" ["Poverty in village and town"], *Klassekampen* 18.12.2012

Heløe, Leif Arne: "Forskriver Samhandlingsreformen riktig medisin" ["Is the Coordination Reform prescribing the right medicine?"] *Kommunetorget.no* 24.01.2012

Heløe, Leif Arne: "Fra paternalisme til pasientrettigheter" ["From paternalism to patient rights"], feature article in *Tidsskrift for Den norske legeforening*, 2012, 132: 434–436

Heløe, Leif Arne: "Hvor går Nord-Norge?" ["Quo vadis, Northern Norway?"], *Harstad Tidende* 27.01.2012

Heløe, Leif Arne: "Samhandling, tverrfaglighet og forebygging – går alt i hop?" ["Coordination, interdisciplinarity and prevention – all moving to the same drum beat?"], *Kommunetorget.no* 28.02.2012

Heløe, Leif Arne: "Orkester av fin gammel årgang" ["A prime vintage orchestra"], *Harstad Tidende* 05.03.2012

Heløe, Leif Arne: "Sykehusene under kniven" ["Hospitals under the scalpel"], *Klassekampen* 28.03.2012

Heløe, Leif Arne: "Hva vil vi med kommunene?" ["What do we want our local councils for?"], *Aftenposten* 10.05.2012

Heløe, Leif Arne: "Hva vil vi med kommunene?" ["What do we want our local councils for?"], *Kommunetorget.no* 11.05.2012

Heløe, Leif Arne: "Valgfrihet over alle grenser?" ["Freedom of choice without limits?"], *Minerva*, 2012 (2): 37–43

Holm, Arne: "Retten til å bo" ["The right to housing"], *Sinn og samfunn*, 2012 (3)

Johannessen, Katja: "Hvor skal de bo?" ["Where are they supposed to live?"] *Aftenposten* 11.09.2012

Lied, Camilla: "Nytteløst å straffe tiggere" ["Pointless to punish beggars"], *Dagsavisen* 14.05.2012

Myrvold, Trine Monica: "Barneverntrøbbel" ["Trouble with the child welfare authorities"], *Kommunal rapport* 08.03.2012

Myrvold, Trine Monica: "Likeverd – for hvem?" ["Equality – For whom?"], *Kommunal rapport* 10.05.2012

Myrvold, Trine Monica: "Medvirkning – for hvem?" ["Participation – For whom?"], *Kommunal rapport* 09.08.2012

Myrvold, Trine Monica: "Norsk eksport" ["Norwegian exports"], *Kommunal rapport* 27.09.2012

Myrvold, Trine Monica: "Tango – for fire-fem?" ["Tango – for four-five?"], *Kommunal rapport* 15.11.2012

Renå, Helge: "Uten kontroll og tilsyn" ["Without control and supervision"], *Aftenposten* 18.01.2012

Risan, Lars: "Framtiden i våre hendes lyntog" ["Bullet train from 'Future in Our Hands'"], *Dagsavisen* 02.02.2012

Risan, Lars: "Slag og slagsider i klimaforskningen" ["Knocks and biases in climate research"], *Morgenbladet* 09.03.2012

Risan, Lars: "Den elektriske bilen og det økomoderne" ["The electric car and ecomodernity"], *forskning.no* 12.12.2012

Ruud, Marit Ekne, Jørn Holm-Hansen, Vibeke Nenseth and Anders Tønnesen: "Samspill en viktig motor" ["Pulling together – An important engine"], *Aftenposten* 21.03.2012

Underthun, Anders and David Christoffer Jordhus-Lier: "Samhold på hotellarbeidsplassen etter lønnsoppgjøret?" ["A united workforce in the hotel trade after the wage settlement?"], *frifagbevegelse.no* 02.10.2012

Vestby, Guri Mette: "Festivalen og kommunen" ["The festival and the local council"], *Kommunal rapport* 25.10.2012

Aasland, Aadne and Susanne Søholt: "Innvandrere: Muligheter i distriktene?" ["Immigrants: Opportunities in rural areas?"], *Østlandet* 12.12.2012

Academic Conferences 2012

Papers read at international and national conferences

Astrup, Kim Christian and Elaine Kempson: "Financialisation of housing markets: is there a role for the State in sub-prime lending?", read at the Nordic Urban and Housing Research Conference (NSBB) arranged by Aalto University Department of Real Estate, Planning and Geoinformatics, Helsinki, Finland 09–12.10.2012

Barlindhaug, Rolf and Kim Christian Astrup: "Affordability in a deregulated housing market", read at the ENHR conference "Housing: Local Welfare and Local Markets in a Globalised World" arranged by NOVA/ENHR Lillehammer 24–27.06.2012

Dyb, Evelyn: "Homeless prisoner's construction of a home", read at the ENHR conference "Housing: Local Welfare and Local Markets in a Globalised World" arranged by NOVA/ENHR, Lillehammer 24–27.06.2012

Dyb, Evelyn, Camilla Lied and Helge Renå: "Welfare municipalities and social housing: The emergence of a housing profession", read at the conference "Urban and Housing Policy: Research Making a Difference?" arranged by Nordic Seminar for Housing and Urban Research, NSBB, Helsinki, Finland 09–12.10.2012

Hanssen, Gro Sandkjær: "The county as network-node in new, innovative network arenas for coordinating water management. How do county politicians play out their role as multi-level coordinators?" read at Roskilde University Sunrise Conference, Roskilde, Denmark 29–31.10.2012

Helgesen, Marit Kristine and Elisabeth Fosse: "Autonomy and adaptation in care for the elderly and the mentally ill: The impact of reform on professional practice", read at the EGPA conference "Permanent Study Group on Public Policies", arranged by the University of Bergen, Bergen 05–08.09.2012

Hofstad, Hege, Gro Sandkjær Hanssen and Asbjørn Røiseland: "From service-provider to network-node: What challenges does the emerging multi-level coordination role of the Counties represent?" read at the annual conference of the Nordic Local Government Research (NORKOM) organization, arranged by Department of Political Science, the University of Oslo, Oslo, 22–24.11.2012.

Kvinge, Torunn, Rolf Barlindhaug, Camilla Lied and Marit Ekne Ruud: "Is it possible to counteract residential segregation through urban planning?", read at the conference "Urban and Housing Policy: Research Making a Difference?" arranged by Nordic Seminar for Housing and Urban Research, NSBB, Helsinki, Finland 09–12.10.2012

Langeland, Ove: "Climate change adaptation in Bergen – many projects, one process?", read at 3rd International BaltCICA Conference, arranged by Geological Survey of Finland, Helsinki, Finland 18–19.01.2012

Langeland, Ove: "Constructing sustainable cities: the case of urban energy solutions in the Oslo region", read at the 2012 EU-SPRI conference "Towards Transformative Governance? Responses to mission-oriented innovation policy paradigms", arranged by European Forum for Studies of Policies for Research and Innovation (Eu-SPRI), Karlsruhe, Germany 12–13.06.2012

Langeland, Ove: "Building the Norwegian ZEB Innovation Systems. The role of construction projects in the emerging innovation systems for energy efficiency in the built environment in Norway", read at the 2012 EURA conference "Urban Europe – Challenges to Meet the Urban Future", arranged by the European Urban Research Association (EURA), Vienna, Austria 20–22.09.2012

Vogt, Rolf and Geir Inge Orderud: "Trans-disciplinarily required in understanding, predicting and dealing with water eutrophication", read at the MILEN International Conference on "Advancing the Research and Policy Agendas on Sustainability and the Environment", arranged by the University of Oslo, Oslo 22–23.11.2012

Samuelsen, Roar: "Constructing sustainable cities – The case of urban energy solutions in the Oslo region", read at the 2012 EU-SPRI conference "Towards Transformative Governance? Responses to mission-oriented innovation policy paradigms", arranged by European Forum for Studies of Policies for Research and Innovation (Eu-SPRI), Karlsruhe, Germany 12–13.06.2012

Samuelsen, Roar: "The functional dynamics of the Norwegian ZEB TIS – The emergence of a technological innovation system for energy efficiency in the built environment in Norway", read at the IST 2012 – "International Conference on Sustainability Transitions" arranged by STRN Sustainability Transitions Research Network, Copenhagen, Denmark 29–31.08.2012

Samuelsen, Roar: "Building the Norwegian ZEB Innovation Systems – The role of construction projects in the emerging innovation systems for energy efficiency in the built environment in Norway", read at the 2012 EURA conference "Urban Europe – Challenges to Meet the Urban Future", arranged by European Urban Research Association (EURA), Vienna, Austria 20–22.09.2012

Søholt, Susanne: "Why do they stay? Immigrants in Norwegian rural districts", read at a conference "Rural at the Edge", arranged by The Finnish Society for Rural Research and Development, Joensuu, Finland 21–23.05.2012

Søholt, Susanne: "I love neighbours! Immigrants' experiences and preferences of neighbourhoods in Oslo", read at the conference "Urban and Housing Policy: Research Making a Difference?" arranged by Nordic Seminar for Housing and Urban Research, NSBB, Helsinki, Finland 09–12.10.2012

Anders Underthun, Aadne Aasland and Erik Henningsen: "Stretching liminal spaces of work? The ambiguities of hotel work in Norway", read at the Royal Geographic Society's annual conference, Edinburgh, UK 04.07.2012

Aasland, Aadne and Guri Tyldum: "Stuck in poor working conditions? Hotel workers in the larger Oslo region", read at the 2012 Annual Meeting of the Association of American Geographers, New York, USA 24–28.02.2012

Lectures and talks at other academic seminars and conferences in Norway and abroad

Astrup, Kim Christian: "Boligprisutviklingen i Norge – forventningens rolle" ["Trends in property prices. The role of expectations"], presented at the seminar "Den norske boligboblen", arranged by the Norwegian State Housing Bank, Region East, Oslo 02.05.2012

Barlindhaug, Rolf: "Boligkarriere for startlånssøkere" ["Housing careers of start-up applicants"], presented at the seminar "Startlån som virkemiddel for økt eierskap?", arranged by the Norwegian State Housing Bank, Sandefjord 25.01.2012

Barlindhaug, Rolf: "Befolkningsutvikling og boligmarked" ["Population trends and the housing market"], presented at the seminar "Hvordan ønsker vi at fremtidens boligmarked skal være?", arranged by IGLO – Forum for Housing Policy, Oslo 14.02.2012

Barlindhaug, Rolf: "Kommunal- og samfunnsøkonomiske effekter av boligsosial politikk" ["Economic effects of social housing policy for local councils and wider society"], presented at the seminar "Boliger for fremtiden", arranged by Norwegian Municipal Engineers Association, NKF, Oslo 15.02.2012

Barlindhaug, Rolf: "Prisdannelse i byregioner med befolkningsvekst" ["Price formation in urban areas with population growth"], presented at the seminar on house prices arranged by the urban development committee, Trondheim City Council, Trondheim 21.03.2012

Barlindhaug, Rolf: "Hva skjer med boligutvikling og boligmarkedet?" ["What's afoot in the housing construction sector and the housing market?"], read at the 2012 Drammen conference "Bolig og boligpolitikk – behov for nye løsninger?", arranged by Insam, Norwegian University of Life Sciences, and Norwegian State Housing Bank, Drammen 26.03.2012

Barlindhaug, Rolf: "Boligkarriere for startlånssøkere" ["Housing careers of start-up applicants"], read at the Social Housing Conference arranged by County Governor of Oslo and Akershus, Oslo 09.05.2012

Barlindhaug, Rolf: "Boligkarriere for startlånssøkere" ["Housing careers of start-up applicants"], read at Social Housing Conference arranged by County Governor of Oslo and Akershus, Strömstad, Sweden 06.06.2012

Barlindhaug, Rolf: "Boligkarriere for startlånssøkere" ["Housing careers of start-up applicants"], read at the social housing conference arranged by County Governor of Oslo and Akershus, Brumunddal 11.06.2012

Barlindhaug, Rolf: "Om simulatoren for beregning av tilskudd til kommunale utleiebøliger" ["On the grant calculating simulator for council rental housing"], presented at the Norwegian State Housing Bank's academic meeting, Oslo 14.06.2012

Barlindhaug, Rolf: "Housing policy and redistribution of income", read at The 8th Sino-Norwegian Social Forum, arranged by CIRDI/NIBR, Haikou, Kina 01–02.12.2012

Barlindhaug, Rolf: "Boligbyggingens prisrespons. For mange hensyn eller for lite tilrettelegging?" ["House building's price response. Too many considerations to take or too small an organization?"], presented at a meeting of the housing economy network, arranged by Prognosesenteret AS, Oslo 10.12.2012

Blåka, Sara: "Organisering av helse- og omsorgsarbeid i kommunene" ["Organizing healthcare in the municipalities"], presented at a meeting of NIBR's Academic Forum on Researcher Perspectives on the Coordination Reform – Challenges and Opportunities, Oslo 03.05.2012

Dyb, Evelyn: "Det boligsosiale feltet og planlegging" ["The field of social housing and the planning system"], presented at a Samplan seminar arranged by the Norwegian Association of Local and Regional Authorities, Oslo 22.11.2012

Gotaas, Nora: "Endringsarbeid i selvhjelpsgrupper" ["Work on achieving change in self-help groups"], read at a meeting of the Forum for networks of initiators, arranged by LINK Oslo, Oslo 16.04.2012

Gotaas, Nora: "Etablering og igangsetting av selvhjelpsgrupper. Erfaringer fra nettverk for selvhjelp, Utviklingsprosjekt LINK Vestfold" ["Setting up and starting self-help groups. Experiences of a self-help network, a LINK Vestfold development project"], presented at Theme Day arranged by Self-Help Norway, Oslo 25.04.2012

Gotaas, Nora: "Endringsarbeid i selvhjelpsgrupper og i lokalsamfunn" [""], presented at the seminar Pulling Together for Health in Lyngen, arranged by LINK Lyngen, Lyngen 14.06.2012

Gotaas, Nora: "Om virksomme faktorer i selvhjelpsarbeid" ["On active factors in self-help work"], presented at a network seminar for healthcare organizations in Oslo, arranged by LINK Oslo and Self-Help Norway's local branches in Oslo, Østfold and Akershus, Oslo 20.06.2012

Gotaas, Nora: "Funn fra forskning på selvhjelpsgrupper i Vestfold og Oslo" ["Findings from research on self-help groups in Vestfold and Oslo"], presented at a county conference involving Buskerud, Vestfold and Telemark counties "Together for self-organized self-help, arranged by Self-Help Norway's local branches in Buskerud, Vestfold and Telemark, Tønsberg 15.11.2012

Gotaas, Nora: "Hva har vi lært gjennom forskning på selvorganisert selvhjelp? Virksomme faktorer i selvhjelpsarbeid" ["What has the study of self-organized self-help taught us? Factors facilitating self-help"], presented at the county conference for Østfold "Selvorganisert selvhjelp på mange arenaer, vår helse - vårt ansvar", arranged by Self-Help Norway, Frisklivssentralen Moss, Frivilligsentralen Moss, Frisklivssentralen Rygge, Moss 20.11.2012

Grønningsæter, Arne, Aadne Aasland and Peter Meylakhs: "Collaboration and trust in HIV and AIDS prevention in North West Russia" [""], presented at the FORSA Nordic Conference, arranged by Social Work Research Association, Trondheim 04-06.10.2012

Guttu, Jon: "Norske eksempler på fortetting med og uten kvalitet" ["Norwegian examples of densification with and without quality"], presented at the seminar on urban restructuring, arranged by the Norwegian University of Science and Technology (NTNU), Trondheim 04.01.2012

Guttu, Jon: "Boligvisjoner" ["Housing visions"], presented at a housing seminar arranged by Oslo Association of Architects, Oslo 14.03.2012

Guttu, Jon: "Forutsetninger for boligkvalitet" ["Necessary factors to achieve quality of housing"], presented at the urban housing seminar, arranged by Norwegian Architects' Association (NAL), Oslo 18.04.2012

Guttu, Jon: "Trangt, mørkt og dårlig - korleis er kvaliteten på fortettinga" ["Cramped, dark and bad - What are the standards of densification"], presented at the densification seminar, arranged by Møre og Romsdal County Council, Molde 25.04.2012

Guttu, Jon: "Det nye boligparadigmet" ["The new housing paradigm"], presented at the Municipal Housing Administrators' National Council's conference, Lillehammer 22-24.05.2012

Guttu, Jon: "Sol, lys og luft i boligen, umistelige kvaliteter" ["Sun, light and air in the home, irreplaceable qualities"], presented at the seminar "The rich should be richer", arranged by Oslo kunsthall, Oslo 19.06.2012

Guttu, Jon: "Krav til uterom" ["Outdoor space requirements"], presented at the densification seminar, arranged by Hå town council, Oslo 22.08.2012

Guttu, Jon: "Boligfortetting i by. Gode og mindre gode eksempler" ["Urban densification. Some good and some less than good examples"], presented at the urban growth seminar, arranged by Hedmark county council, Lillehammer 06.09.2012

Guttu, Jon: "1. Krav til uterom 2. Historisk oppsummering av tendenser" ["Outdoor space requirements, part II. Historical trend review"], presented at a training session on housing, arranged by the Norwegian State Housing Bank/Hageselskapet, Drammen 15.10.2012

Guttu, Jon: "Bokvalitet i nye byområder" [""], presented at the seminar "Urban dwelling, living arrangements and housing standards" arranged by the Norwegian Association of Architects (NAL), Oslo 06.11.2012

Guttu, Jon: "Høyhusets vekst og fall" ["The rise and fall of the tower block"], presented at a meeting arranged by Bøler public library, Oslo 12.11.2012

Hanssen, Gro Sandkjær: "Hva er fokus i forskningen?" ["What's the focus on in research?"], presented at a network meeting of regional and municipal planning authorities, arranged by the Ministry of the Environment, Lillestrøm 12-13.11.2012

Hanssen, Gro Sandkjær: "Forholdet mellom stat og kommunesektor - kunnskapsstatus og kunnskapshull" ["The relationship between central government and the local government sector - Current knowledge status and knowledge gaps"], presented at a specialist R&D seminar arranged by the Norwegian Association of Local and Regional Authorities, Gardermoen 20.06.2012

Haug, Marit and Aadne Aasland: "Presentation of the Norwegian Institute for Urban and Regional Research and NIBR's activities in Ukraine", presented at the seminar "Becoming of regions in Ukraine and management effect of regional policy", arranged by Higher Education Institute of Vadym Hetman KNEU, Kiev, Ukraine 23.08.2012

Helgesen, Marit Kristine and Arild Schou: "Governing of the coordination reform in Norway through hierarchy, market and network-mechanisms; some early phase lessons from three different sized municipalities", presented at NEON conference, arranged by Sogn og Fjordane University College, Sogndal 21-22.11.2012

Helgesen, Marit Kristine: "Kommunene bygger kompetanse i helse og omsorg" ["Local authorities are improving expertise in the healthcare sector"], presented at a meeting of NIBR's Academic Forum on Researcher Perspectives on the Coordination Reform - Challenges and Opportunities, Oslo 03.05.2012

Heløe, Leif Arne: "Samhandlingsreformen - bakgrunn og idé" ["Coordination Reform - Background and conception"], presented at a meeting of NIBR's Academic Forum on Researcher Perspectives on the Coordination Reform - Challenges and Opportunities, Oslo 03.05.2012

Heløe, Leif Arne: "Nord-Norge 1945-2012: Strid, vekst og forandring" ["Northern Norway 1945-2012: Conflict, Growth and Change"], presented at NIBR's jubilee seminar "Det meste er nord", Oslo 14.11.2012

Heløe, Leif Arne: "Fra fagstyre til kommunestyre" ["From specialist committees to local government"], presented at the conference "30 years since the Local Health Service Act", arranged by Directorate of Health, Oslo 19.11.2012

Hofstad, Hege: "Utfordringer i lokalt folkehelsearbeid" ["Challenges in local public health work"], presented at a meeting of NIBR's Academic Forum on Researcher Perspectives on the Coordination Reform - Challenges and Opportunities, Oslo 03.05.2012

Hofstad, Hege: "Hva er status for folkehelsearbeidet i kommuner/fylkeskommuner? - Hva er utfordringene framover?" ["What is the current status of public

health in the municipalities and counties? - What are the challenges ahead?"], presented at public health advisory meeting, arranged by the Directorate of Health, Gardermoen 07.03.2012

Holm, Arne: "Alle må bo. Kommunenes satsing på bolig for psykiske syke" ["Everyone needs a place to live. Investing in housing for the mentally ill"], presented at a meeting of NIBR's Academic Forum, Oslo 18.04.2012

Holm, Arne: "En verdig bosituasjon innen psykisk helsearbeid" ["Decent housing in public health work"], presented at the social housing conference arranged by the County Governor of Oslo and Akershus, Oslo 20.11.2012

Jones, Peris Sean: "On human rights and impact evaluation", presented at a meeting of Norad's civil society panel on "Hvor går vi herfra?" ["Where do we go from here?"], arranged by Norwegian Development Network, Oslo 20.03.2012

Lied, Camilla: "Presentasjon av foranalysen av det bolig sosiale arbeidet i Holmestrand kommune (Rena, Medby og Lied)" ["Presentation of feasibility study of social housing work in the municipality of Holmestrand (Rena, Medby and Lied)"], presented at social housing seminar, arranged by the municipality of Holmestrand, Holmestrand 11.09.2012

Myrvold, Trine Monica: "Den vanskelige samhandlingen - det statlige barnevernet og andre aktører" ["That tricky thing, coordinated action - The state child welfare authority and other actors"], presented at a meeting on the evaluation of the coordination reform in the child welfare authority, arranged by the Norwegian Directorate for Children, Youth and Family Affairs, Oslo 09.02.2012

Myrvold, Trine Monica: "Den vanskelige samhandlingen - det statlige barnevernet og andre aktører" ["That tricky thing, coordinated action - The state child welfare authority and other actors"], presented at a seminar for the Norwegian Parliament's standing committee on family affairs, Oslo 14.02.2012

Myrvold, Trine Monica: "Den vanskelige samhandlingen - det statlige barnevernet og andre aktører" ["That tricky thing, coordinated action - The state child welfare authority and other actors"], presented at a child welfare evaluation seminar, arranged by the Ministry of Children and Equality, Oslo 21.02.2012

Myrvold, Trine Monica: "Den vanskelige samhandlingen - det statlige barnevernet og andre aktører" ["That tricky thing, coordinated action - The state child welfare authority and other actors"], presented at NOBO's annual conference, arranged by the Organization of Municipal Child Welfare Heads, Gardermoen 26.04.2012

Myrvold, Trine Monica: "Den vanskelige samhandlingen - det statlige barnevernet og andre aktører" ["That tricky thing, coordinated action - The state child welfare authority and other actors"], presented at child welfare conference arranged by County Governor of Telemark, Oslo 22.05.2012

Myrvold, Trine Monica: "Den vanskelige samhandlingen - det statlige barnevernet og andre aktører" ["That tricky thing, coordinated action - The state child welfare authority and

other actors"], presented at a lunch seminar arranged by the Agency for Public Management and eGovernment (Difi), Oslo 30.08.2012

Myrvold, Trine Monica: "Utfordringer i styringsforholdet mellom staten og kommunene" ["Challenges balancing government by the state and by the municipalities"], presented at the annual conference of the Statistical Reports Committee for county and municipal government finance (TBU) at the Ministry of Local Government and Regional Development, Oslo 13.12.2012

Onsager, Knut: "Utviklingsorienterte nøkkelbedrifter, innovasjonskultur og velferd – viktige betingelser for suksess i livskraftige kystsamfunn" ["Development-oriented key enterprises, innovation culture and welfare – Essential success-promoting factors in viable coastal communities"], presented at the Sea and Coast seminar 2012, arranged by the Research Council of Norway, Oslo 21.10.2012

Orderud, Geir Inge: "Samfunnets respons" ["Society's response"] and "Preliminary findings on society's response", presented at the conference "EUs vandredirektiv krever kunnskap på tvers", arranged by CIENS, Oslo 27–28.02.2012

Ruud, Marit Ekne: "Midtveisevaluering av Groruddalssatsingen" ["Mid-term evaluation of the Grorud Valley Action Plan"], presented at a seminar arranged by Directorate of Integration and Diversity (IMDi), Oslo 28.02.2012

Ruud, Marit Ekne: "Midtveisevaluering av Groruddalssatsingen. Hovedfunn og videre utfordringer" ["Mid-term evaluation of the Grorud Valley Action Plan. Main findings and challenges"], presented at political meeting on the Grorud Valley Action Plan, arranged by Oslo City Council, Oslo 24.08.2012

Ruud, Marit Ekne: "Planlegging for utvikling av byer og tettsteder – hva er kunnskapsbehovet?" ["Planning for the development of cities and towns – What do we need to know?"], presented at a network meeting for regional and municipal planning authorities, arranged by the Ministry of the Environment, Lillestrøm 12.12.2012

Schmidt, Lene: "Fortett med vett" ["Common sense and densification"], presented at the seminar "Using land efficiently for housing", arranged by the National Association of Architects and Building Standards Directorate, Oslo 04.09.2012

Schmidt, Lene: "Boliger med service og fellesskap – norske eksempler" ["Housing with services and community – Norwegian examples"], presented at the seminar Collective Living, arranged by Tore Lange and Berit Waal, Oslo 07–09.12.2012

Søholt, Susanne: "Migrasjon og inkludering – by og bolig" ["Migration and inclusion"], presented at a seminar arranged by Kampen Volunteer Centre and Oslo Folkeakademi, Oslo 19.03.2012

Søholt, Susanne: "Derfor blir vi her" ["That's why we're staying"], presented at the conference "Diversity and jobs – What does it take to persuade immigrants to stay?" arranged by Directorate of Integration and Diversity (IMDi) and Centre of Competence on Rural Development, Grimstad 26–27.04.2012

Søholt, Susanne: "Derfor blir vi her" ["That's why we're staying"], presented at the 2012 Maihaugen conference "Participation, trust, belonging", arranged by the County Governor of Oppland and Directorate of Integration and Diversity (IMDi), Lillehammer 09.05.2012

Søholt, Susanne: "Internasjonalt arbeidsmarked møter nasjonalt boligmarked" ["International labour market meets national housing market"], presented at a breakfast meeting at Fafo, Oslo 31.05.2012

Søholt, Susanne: "Derfor blir vi her – innvandrere i Distrikts-Norge" ["That's why we're staying – Immigrants in rural Norway"], presented at a seminar for the Statistical Reports Committee for county and municipal government finance, arranged by Directorate of Integration and Diversity (IMDi), Norwegian Association of Local and Regional Authorities and Statistics Norway, Bergen 06.06.2012

Søholt, Susanne: "Internasjonalt arbeidsmarked møter nasjonalt boligmarked" ["International labour market meets national housing market"], presented at the housing conference, arranged by the municipality of Sarpsborg and the Norwegian State Housing Bank, Sarpsborg 14.11.2012

Søholt, Susanne: "Internasjonalt arbeidsmarked møter nasjonalt boligmarked" ["International labour market meets national housing market"], presented at Deputation to Oslo City Council's Housing Needs Plan for 2013–2016, arranged by Oslo City Council, City Council Secretariat, Oslo 20.11.2012

Søholt, Susanne: "Internasjonalt arbeidsmarked møter nasjonalt boligmarked" ["International labour market meets national housing market"], presented at the information meeting "Decent and secure homes only for ethnic Norwegians?", arranged by the Norwegian State Housing Bank, Region Mid-Norway, and Directorate of Integration and Diversity (IMDi), Trondheim 06.12.2012

Søholt, Susanne: "Internasjonalt arbeidsmarked møter nasjonalt boligmarked" ["International labour market meets national housing market"], presented at the information meeting arranged by the Norwegian State Housing Bank, Region East, Oslo 28.11.2012

Sørli, Kjetil: "Hvorfor flytte? Hvorfor bli boende?" ["Why move? Why stay put?"], presented at the seminar "Migration motives and choice of residential location", arranged by NORUT, Tromsø 17–18.01.2012

Sørli, Kjetil: "Gamle mønstre med nye begrunnelser?" ["Old patterns with new explanations"], presented at the seminar "Migration motives and choice of residential location", arranged by KRD, Oslo 26.01.2012

Sørli, Kjetil: "Flyttemotiver og byutvikling" ["Reasons for moving and urban development"], presented at the 2012 KOMPAS seminar 2, arranged by Fredrikstad City Council, Fredrikstad 31.05.2012

Sørli, Kjetil: "Befolkningsutvikling og bosettingsmønstre" ["Population trends and settlement patterns"], presented at the seminar Viable Local Communities in Ringerike, arranged by the municipality of Ringerike, Vikersund 19.06.2012

Sørli, Kjetil: "Om regional befolkningsutvikling og flytting" ["On regional population trends and migration"], presented at a contact meeting with Centre for Rural Research, Trondheim 22.06.2012

Sørli, Kjetil: "Flytting, bosetting, sysselsetting og pendling i samiske områder i Nord-Norge" ["Re-location, re-settlement, employment and commuting in Sami areas in Northern Norway"], presented at a seminar on relocation patterns among Sami, arranged by Expert Analysis Group in Sami statistics, Oslo 27.04.2012 and Tromsø 28.06.2012

Sørli, Kjetil: "Demografiske utfordringer framover" ["Demographic challenges ahead"], presented at the book launch for *Det Sami regionale Norge 1950–2050* [Regional Norway 1950–2050], arranged by NIBR, Oslo 29.08.2012

Sørli, Kjetil: "Bo- og flyttetrender i samiske kommuner gjennom 40 år" ["Residential stability and re-location trends in Sami municipalities over 40 years"], presented at the book launch for *Samiske tall forteller 5* [What Sami statistics say, 5], arranged by Sami allskuvla, Karasjok 27.09.2012

Sørli, Kjetil: "Oslos demografi de siste 50 år" ["Oslo's demography the last 50 years"], presented at Dags Dag, a jubilee seminar arranged by the University of Oslo, Oslo 18.10.2012

Aandahl, Guro: "Monsoon gambling and scheme manoeuvring (How) is climate change important for rural India?" presented at the workshop "Managing societal changes in India", arranged by the Norwegian University of Science and Technology (NTNU) for the Research Council of Norway, 18–19.06.2012

Aasland, Aadne: "Fragmenterte og flerkulturelle arbeidsplasser" ["Fragmentary and multi-cultural jobs"], presented at the seminar "The Changing Nature of Work in the Hotel Business: Jobs under global pressure", arranged by NIBR, Oslo 14.06.2012

Aasland, Aadne: "Kvifor blir dei her, presentasjon av fersk NIBR Report om innvandrere i Distrikts-Noreg" ["Why do they stay? Presentation of a fresh report on immigrants in rural Norway"], presented at Rural Forum 2012, arranged by the County Governor of Sogn og Fjordane, Fresvik 10–11.05.2012

Aasland, Aadne, Siri Bjerkeim Hellevik and Berit Aasen: "Om hivrettet arbeid overfor innvandrere: Utfordringer og konklusjoner" ["HIV work among immigrants: Challenges and conclusions"], presented at a meeting of NIBR's Academic Forum: On HIV work among immigrants, arranged by the Norwegian Centre for Minority Health Research (NAKMI) and NIBR, Oslo 06.11.2012

Aasland, Aadne: "Derfor blir vi her – Innvandrere i Distrikts-Norge" ["That's why we're staying – Immigrants in rural Norway"], presented at the seminar "That's why we're staying", arranged by Hedmark County Council, Fjellregionen, Tynset Training Centre, Tynset 15.11.2012



Norwegian Institute for Urban and Regional Research

Address: Gaustadalléen 21,
N-0349 Oslo, Norway
Telephone: +47 22 95 88 00
Telefax: +47 22 60 77 74
nibr@nibr.no
www.nibr.no